

Initial Application Date: 12/1/03

Application # 03-5-8322

COUNTY OF HARNETT LAND USE APPLICATION

Central Permitting

102 E. Front Street, Lillington, NC 27546

Phone: (910) 893-4759

Fax: (910) 893-2793

LANDOWNER: Wm. Kent Parris, Jr. Mailing Address: P.O. Box 42535
City: Fayetteville State: NC Zip: 28309 Phone #: 910-424-1294

APPLICANT: Wm. Kent Parris, Jr. Mailing Address: P.O. Box 42535
City: Fayetteville State: NC Zip: 28309 Phone #: 910-424-1294

PROPERTY LOCATION: SR #: 1115 SR Name: Buffalo Lake Rd.
Parcel: 03958704 0020 83 PIN: 9587-80-4000.000
Zoning: R20C Subdivision: Castles Estates Lot #: 118 Lot Size: 26 AC
Flood Plain: X Panel: 0025D Watershed: X Deed Book/Page: 01672/0229 Plat Book/Page: 2012-593

DIRECTIONS TO THE PROPERTY FROM LILLINGTON: Buffalo Lake Rd. -
Castles - Dr. - right onto Pine Valley Ln
lot on right

PROPOSED USE:

- Sg. Family Dwelling (Size 36 x 59) # of Bedrooms 3 # Baths 2 1/2 Basement (w/wo bath) 4A Garage 24x24 Deck 2x10
- Multi-Family Dwelling No. Units _____ No. Bedrooms/Unit _____
- Manufactured Home (Size x) # of Bedrooms _____ Garage _____ Deck _____
- Comments: _____
- Number of persons per household _____
- Business Sq. Ft. Retail Space _____ Type _____
- Industry Sq. Ft. _____ Type _____
- Home Occupation (Size x) # Rooms _____ Use _____
- Accessory Building (Size x) Use _____
- Addition to Existing Building (Size x) Use _____
- Other _____

Water Supply: County Well (No. dwellings _____) Other

Sewage Supply: New Septic Tank Existing Septic Tank County Sewer Other

Erosion & Sedimentation Control Plan Required? YES NO

Structures on this tract of land: Single family dwellings _____ Manufactured homes _____ Other (specify) _____

Property owner of this tract of land own land that contains a manufactured home w/in five hundred feet (500') of tract listed above? YES NO

Required Property Line Setbacks:	Minimum	Actual	Minimum	Actual
Front	<u>35</u>	<u>45</u>	Rear	<u>25</u>
Side	<u>10</u>	<u>20</u>	Corner	<u>25</u>
Nearest Building	<u>20</u>	<u>NA</u>		

If permits are granted I agree to conform to all ordinances and the laws of the State of North Carolina regulating such work and the specifications or plans submitted, hereby swear that the foregoing statements are accurate and correct to the best of my knowledge.

[Signature]
Signature of Applicant

12/1/03
Date

This application expires 6 months from the date issued if no permits have been issued

A RECORDED SURVEY PLAT AND RECORDED DEED ARE REQUIRED WHEN APPLYING FOR A LAND USE PERMIT

674 12/2 S

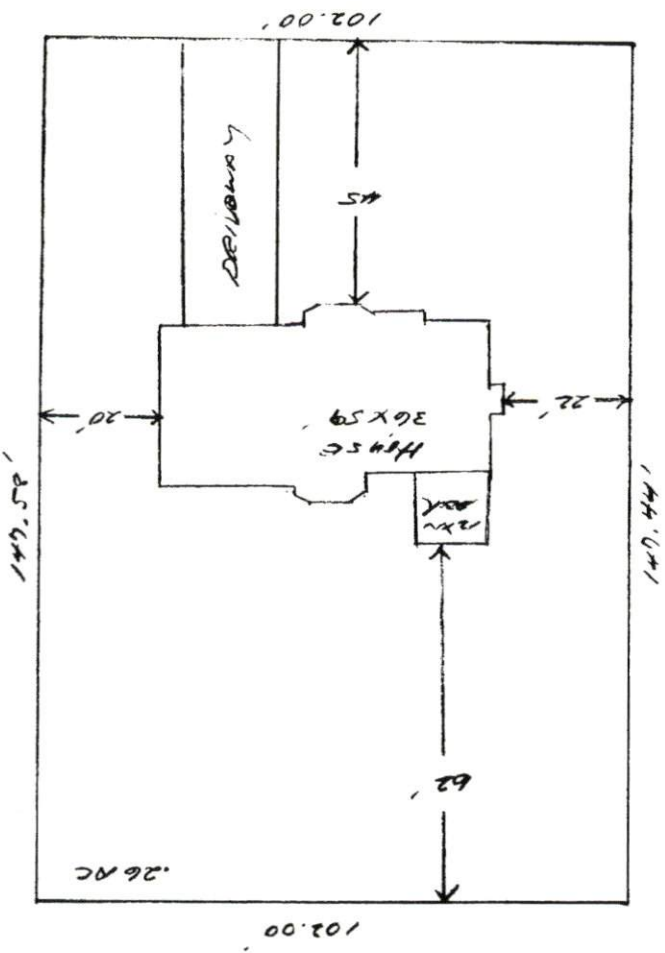
0.345 AC. (100) NCH
 180.20'
 S 86°10'44"E
 0.345 AC.
 150.20'
 NCH
 0.345 AC. (109) NCH
 150.20'
 0.345 AC. (108) NCH
 150.20'
 0.345 AC. (107) NCH
 150.20'
 0.345 AC. (106) NCH
 150.20'
 0.345 AC. (105) NCH
 150.20'
 0.345 AC. (104) NCH
 150.20'
 0.345 AC. (103) NCH
 150.20'
 0.345 AC. (102) NCH
 150.20'
 0.345 AC. (101) NCH
 150.20'
 0.345 AC. (100) NCH
 150.20'
 0.345 AC. (99) NCH
 150.20'
 0.345 AC. (98) NCH
 150.20'
 0.345 AC. (97) NCH
 150.20'
 0.345 AC. (96) NCH
 150.20'
 0.345 AC. (95) NCH
 150.20'
 0.345 AC. (94) NCH
 150.20'
 0.345 AC. (93) NCH
 150.20'
 0.345 AC. (92) NCH
 150.20'
 0.345 AC. (91) NCH
 150.20'
 0.345 AC. (90) NCH
 150.20'
 0.345 AC. (89) NCH
 150.20'
 0.345 AC. (88) NCH
 150.20'
 0.345 AC. (87) NCH
 150.20'
 0.345 AC. (86) NCH
 150.20'
 0.345 AC. (85) NCH
 150.20'
 0.345 AC. (84) NCH
 150.20'
 0.345 AC. (83) NCH
 150.20'
 0.345 AC. (82) NCH
 150.20'
 0.345 AC. (81) NCH
 150.20'
 0.345 AC. (80) NCH
 150.20'
 0.345 AC. (79) NCH
 150.20'
 0.345 AC. (78) NCH
 150.20'
 0.345 AC. (77) NCH
 150.20'
 0.345 AC. (76) NCH
 150.20'
 0.345 AC. (75) NCH
 150.20'
 0.345 AC. (74) NCH
 150.20'
 0.345 AC. (73) NCH
 150.20'
 0.345 AC. (72) NCH
 150.20'
 0.345 AC. (71) NCH
 150.20'
 0.345 AC. (70) NCH
 150.20'
 0.345 AC. (69) NCH
 150.20'
 0.345 AC. (68) NCH
 150.20'
 0.345 AC. (67) NCH
 150.20'
 0.345 AC. (66) NCH
 150.20'
 0.345 AC. (65) NCH
 150.20'
 0.345 AC. (64) NCH
 150.20'
 0.345 AC. (63) NCH
 150.20'
 0.345 AC. (62) NCH
 150.20'
 0.345 AC. (61) NCH
 150.20'
 0.345 AC. (60) NCH
 150.20'
 0.345 AC. (59) NCH
 150.20'
 0.345 AC. (58) NCH
 150.20'
 0.345 AC. (57) NCH
 150.20'
 0.345 AC. (56) NCH
 150.20'
 0.345 AC. (55) NCH
 150.20'
 0.345 AC. (54) NCH
 150.20'
 0.345 AC. (53) NCH
 150.20'
 0.345 AC. (52) NCH
 150.20'
 0.345 AC. (51) NCH
 150.20'
 0.345 AC. (50) NCH
 150.20'
 0.345 AC. (49) NCH
 150.20'
 0.345 AC. (48) NCH
 150.20'
 0.345 AC. (47) NCH
 150.20'
 0.345 AC. (46) NCH
 150.20'
 0.345 AC. (45) NCH
 150.20'
 0.345 AC. (44) NCH
 150.20'
 0.345 AC. (43) NCH
 150.20'
 0.345 AC. (42) NCH
 150.20'
 0.345 AC. (41) NCH
 150.20'
 0.345 AC. (40) NCH
 150.20'
 0.345 AC. (39) NCH
 150.20'
 0.345 AC. (38) NCH
 150.20'
 0.345 AC. (37) NCH
 150.20'
 0.345 AC. (36) NCH
 150.20'
 0.345 AC. (35) NCH
 150.20'
 0.345 AC. (34) NCH
 150.20'
 0.345 AC. (33) NCH
 150.20'
 0.345 AC. (32) NCH
 150.20'
 0.345 AC. (31) NCH
 150.20'
 0.345 AC. (30) NCH
 150.20'
 0.345 AC. (29) NCH
 150.20'
 0.345 AC. (28) NCH
 150.20'
 0.345 AC. (27) NCH
 150.20'
 0.345 AC. (26) NCH
 150.20'
 0.345 AC. (25) NCH
 150.20'
 0.345 AC. (24) NCH
 150.20'
 0.345 AC. (23) NCH
 150.20'
 0.345 AC. (22) NCH
 150.20'
 0.345 AC. (21) NCH
 150.20'
 0.345 AC. (20) NCH
 150.20'
 0.345 AC. (19) NCH
 150.20'
 0.345 AC. (18) NCH
 150.20'
 0.345 AC. (17) NCH
 150.20'
 0.345 AC. (16) NCH
 150.20'
 0.345 AC. (15) NCH
 150.20'
 0.345 AC. (14) NCH
 150.20'
 0.345 AC. (13) NCH
 150.20'
 0.345 AC. (12) NCH
 150.20'
 0.345 AC. (11) NCH
 150.20'
 0.345 AC. (10) NCH
 150.20'
 0.345 AC. (9) NCH
 150.20'
 0.345 AC. (8) NCH
 150.20'
 0.345 AC. (7) NCH
 150.20'
 0.345 AC. (6) NCH
 150.20'
 0.345 AC. (5) NCH
 150.20'
 0.345 AC. (4) NCH
 150.20'
 0.345 AC. (3) NCH
 150.20'
 0.345 AC. (2) NCH
 150.20'
 0.345 AC. (1) NCH
 150.20'

187.17'
 HASE
 -2
 -1
 -2
 S+
 HASE
 NORTH CAROL

Wm Kent Piece Inc.
 Lot # 118 Crestview Estates

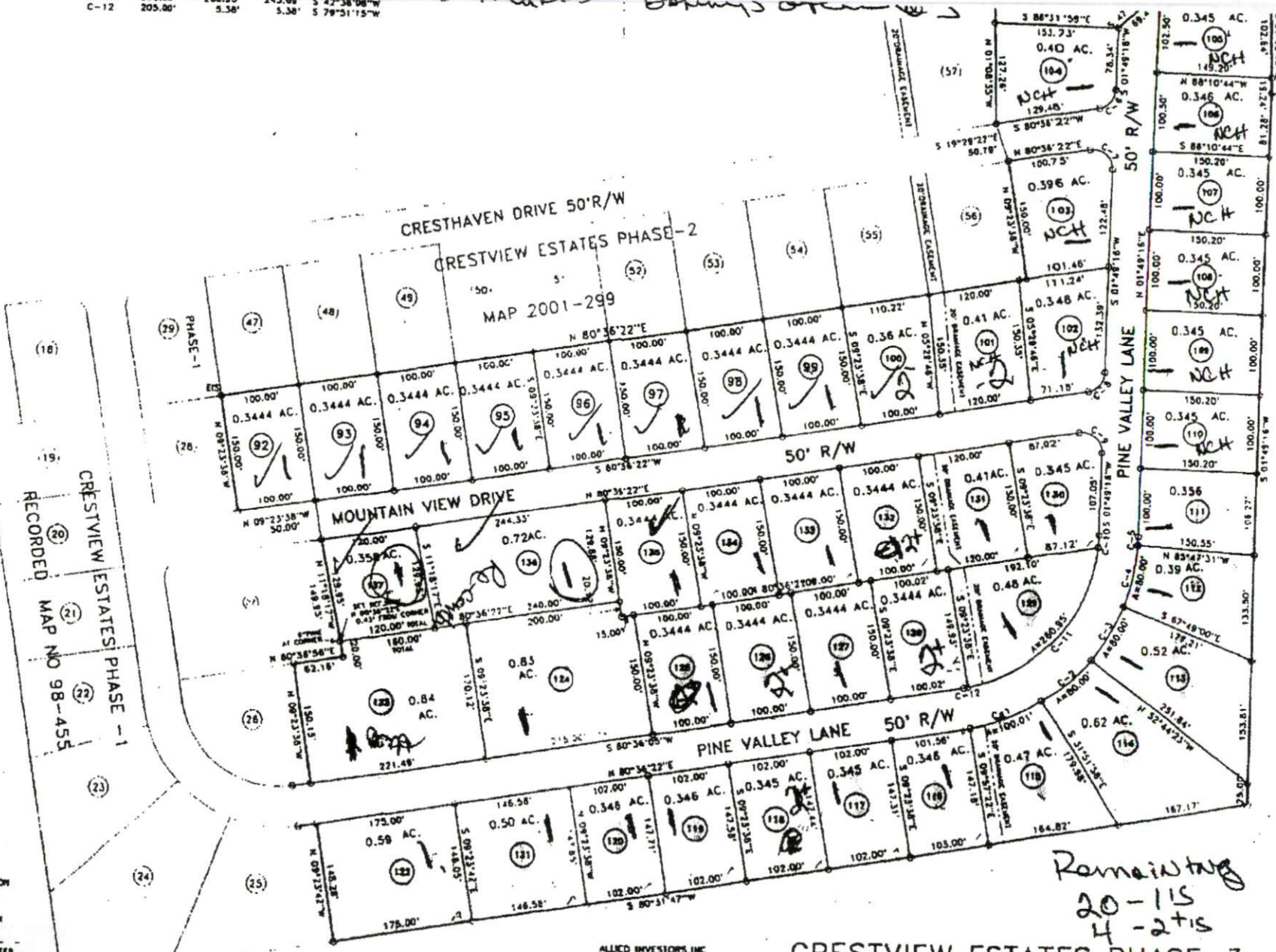
ZONING APPROVAL
 DISTRICT R-200R USE SFD
 BEDROOMS 3
D-1-03
 Zoning Administrator: [Signature]

1" = 30'



C-10 205.00' 15.56' 15.56' S 03°58'42"W
 C-11 205.80' 260.95' 243.69' S 42°38'08"W
 C-12 205.80' 5.38' 5.38' S 79°51'15"W

Handwritten notes and scribbles at the top of the page.



RECORDED MAP NO 98-455
 CRESTVIEW ESTATES PHASE - 1

Handwritten note:
 Remaining
 20-115
 4-215

CRESTVIEW ESTATES PHASE-3

BARBECUE TOWNSHIP HARNETT COUNTY NORTH CAROLINA

ALLIED INVESTMENTS, INC
 DEED BOOK 1145
 PAGE 347

SECTION
 TOWNSHIP
 COUNTY