

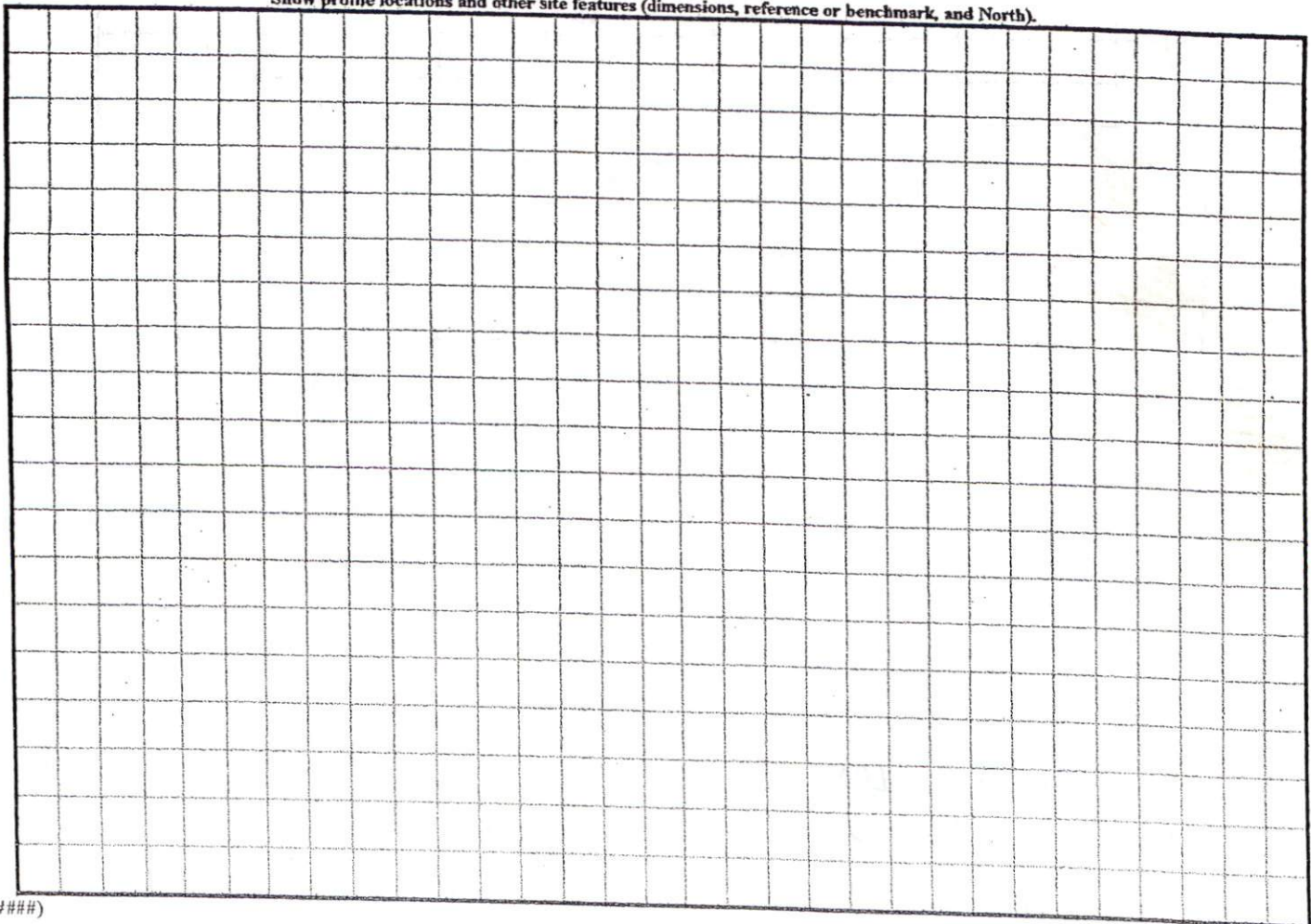
COMMENTS:

LANDSCAPE POSITIONS	GROUP	TEXTURES	.1955 LTAR	CONSISTENCE MOIST	WET
R-RIDGE	I	S-SAND	1.2 - 0.8	VFR-VERY FRIABLE	NS-NON-STICKY
S-SHOULDER SLOPE		LS-LOAMY SAND			
L-LINEAR SLOPE	II	SL-SANDY LOAM	0.8 - 0.6	FR-FRIABLE	SS-SLIGHTLY STICKY
FS-FOOT SLOPE		L-LOAM		FI-FIRM	S-STICKY
N-NOSE SLOPE				VFI-VERY FIRM	VS-VERY STICKY
H-HEAD SLOPE	III	SI-SILT-	0.6 - 0.3	EFI-EXTREMELY FIRM	NP-NON-PLASTIC
CC-CONCLAVE SLOPE		SIL-SILT LOAM			SP-SLIGHTLY STICKY
CV-CONVEX SLOPE		CL-CLAY LOAM			P-PLASTIC
T-TERRACE		SCL-SANDY CLAY LOAM			VP-VERY PLASTIC
FP-FLOOD PLAN		SICL-SILTY CLAY LOAM			
	IV	SIC-SILTY CLAY	0.4 - 0.1		
		C-CLAY			
		SC-SANDY CLAY			

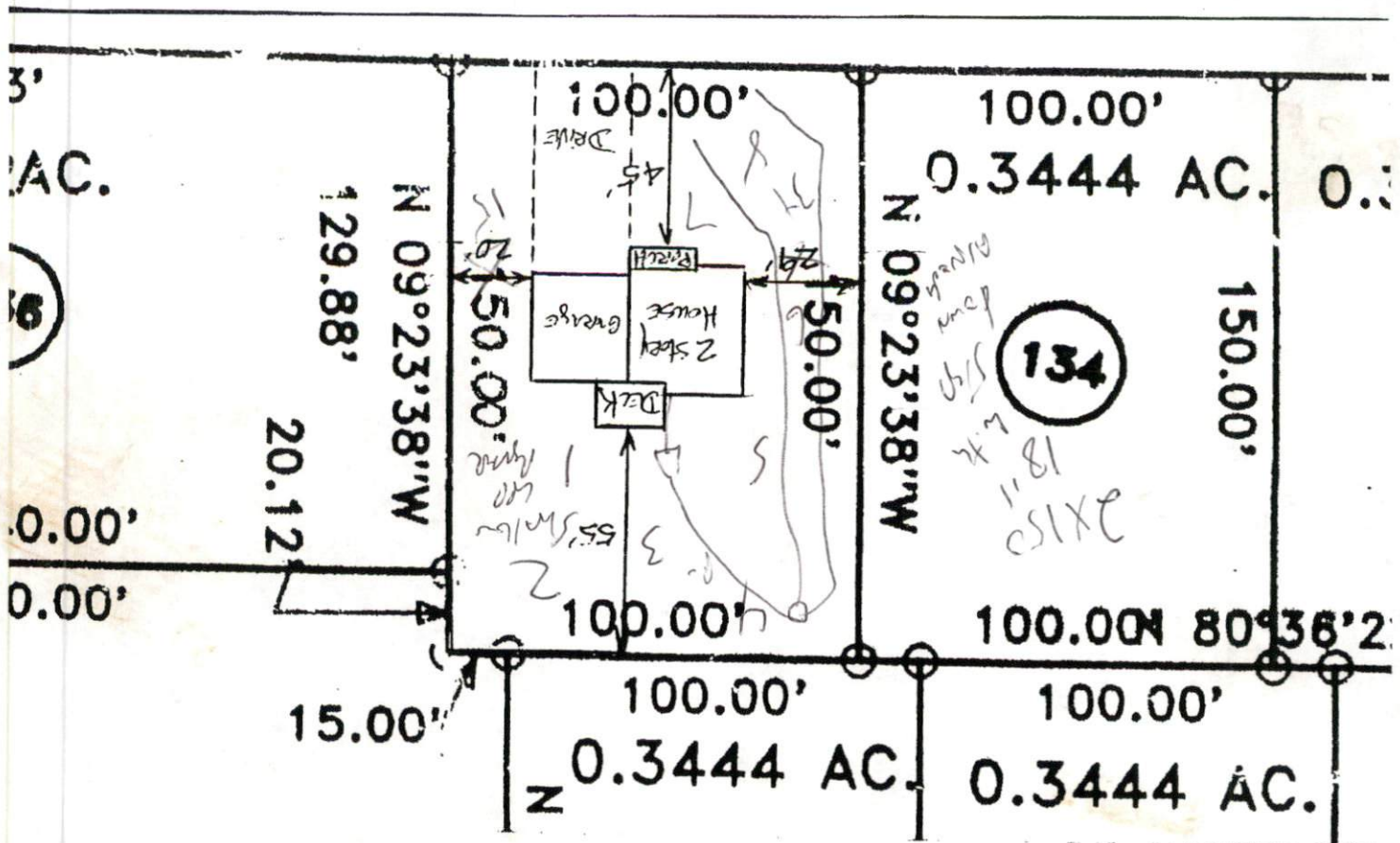
- STRUCTURE**
 SG-SINGLE GRAIN
 M-MASSIVE
 CR-CRUMB
 GR-GRANULAR
 SBK-SUBANGULAR BLOCKY
 ABK-ANGULAR BLOCKY
 PL-PLATY
 PR-PRISMATIC

- MINERALOGY**
 SLIGHTLY EXPANSIVE
 EXPANSIVE

Show profile locations and other site features (dimensions, reference or benchmark, and North).



(#####)



SITE PLAN APPROVAL
 DISTRICT USE R2ZC STD
 #BEDROOMS 3
 11-13-03 [Signature]
 Zoning Administrator

MILLINIA HOMES
 Lot # 135 (BEST VIEW)
 1" = 40'
 "The Vermont"
 Permit Copy