

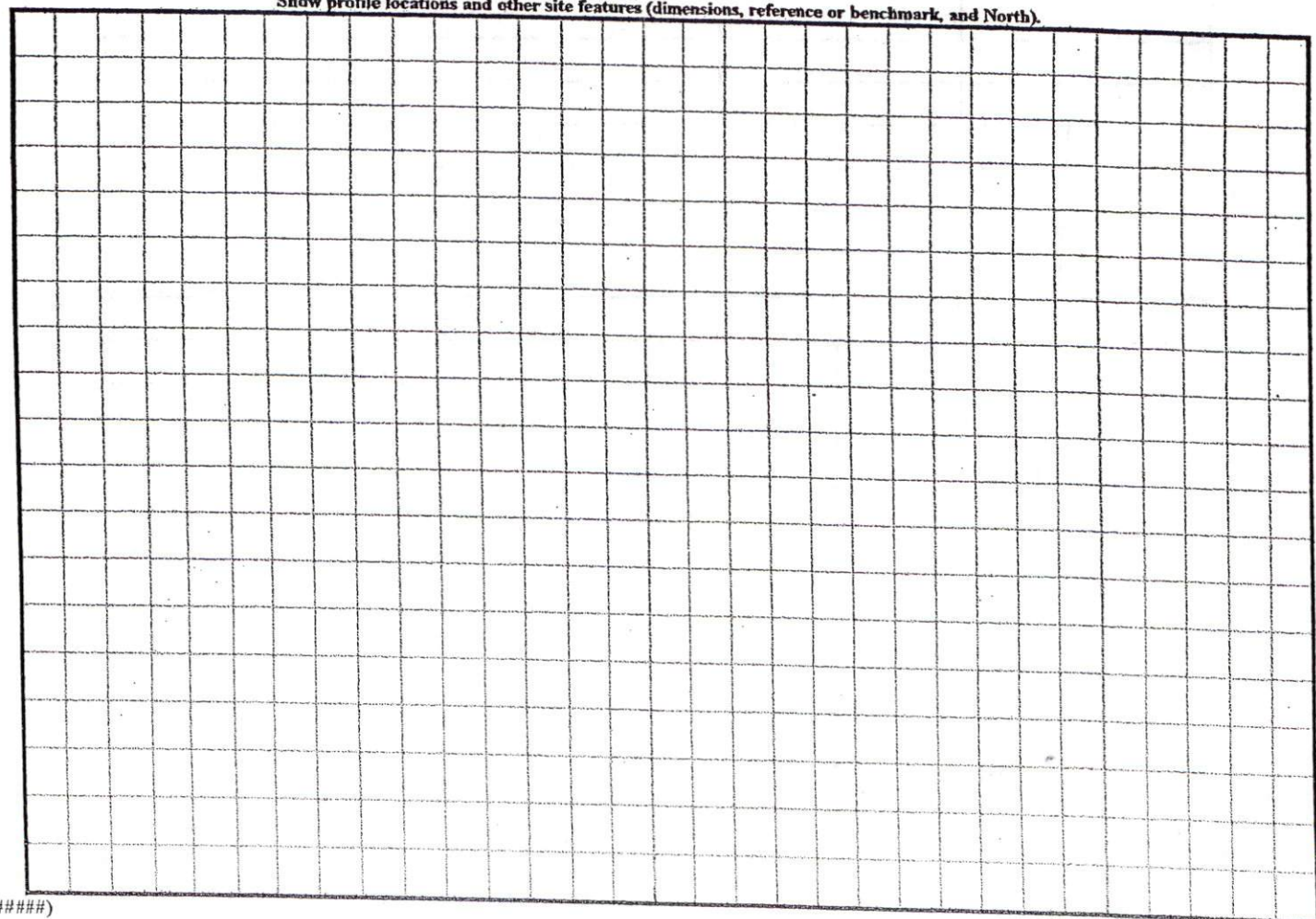
COMMENTS:

LANDSCAPE POSITIONS	GROUP	TEXTURES	.1955 LTAR	CONSISTENCE MOIST	WET		
R-RIDGE	I	S-SAND	1.2 - 0.8	VFR-VERY FRIABLE	NS-NON-STICKY		
S-SHOULDER SLOPE		LS-LOAMY SAND					
L-LINEAR SLOPE	II	SL-SANDY LOAM	0.8 - 0.6	FR-FRIABLE	SS-SLIGHTLY STICKY		
FS-FOOT SLOPE		L-LOAM		FI-FIRM	S-STICKY		
N-NOSE SLOPE		III		SI-SILT-	0.6 - 0.3	VFI-VERY FIRM	VS-VERY STICKY
H-HEAD SLOPE				SIL-SILT LOAM		EFI-EXTREMELY FIRM	NP-NON-PLASTIC
CC-CONCLAVE SLOPE	IV	CL-CLAY LOAM	0.4 - 0.1		SP-SLIGHTLY STICKY		
CV-CONVEX SLOPE		SCL-SANDY CLAY LOAM			P-PLASTIC		
T-TERRACE		SIC-SILTY CLAY			VP-VERY PLASTIC		
FP-FLOOD PLAN		C-CLAY					
		SC-SANDY CLAY					

- STRUCTURE**
 SG-SINGLE GRAIN
 M-MASSIVE
 CR-CRUMB
 GR-GRANULAR
 SBK-SUBANGULAR BLOCKY
 ABK-ANGULAR BLOCKY
 PL-PLATY
 PR-PRISMATIC

- MINERALOGY**
 SLIGHTLY EXPANSIVE
 EXPANSIVE

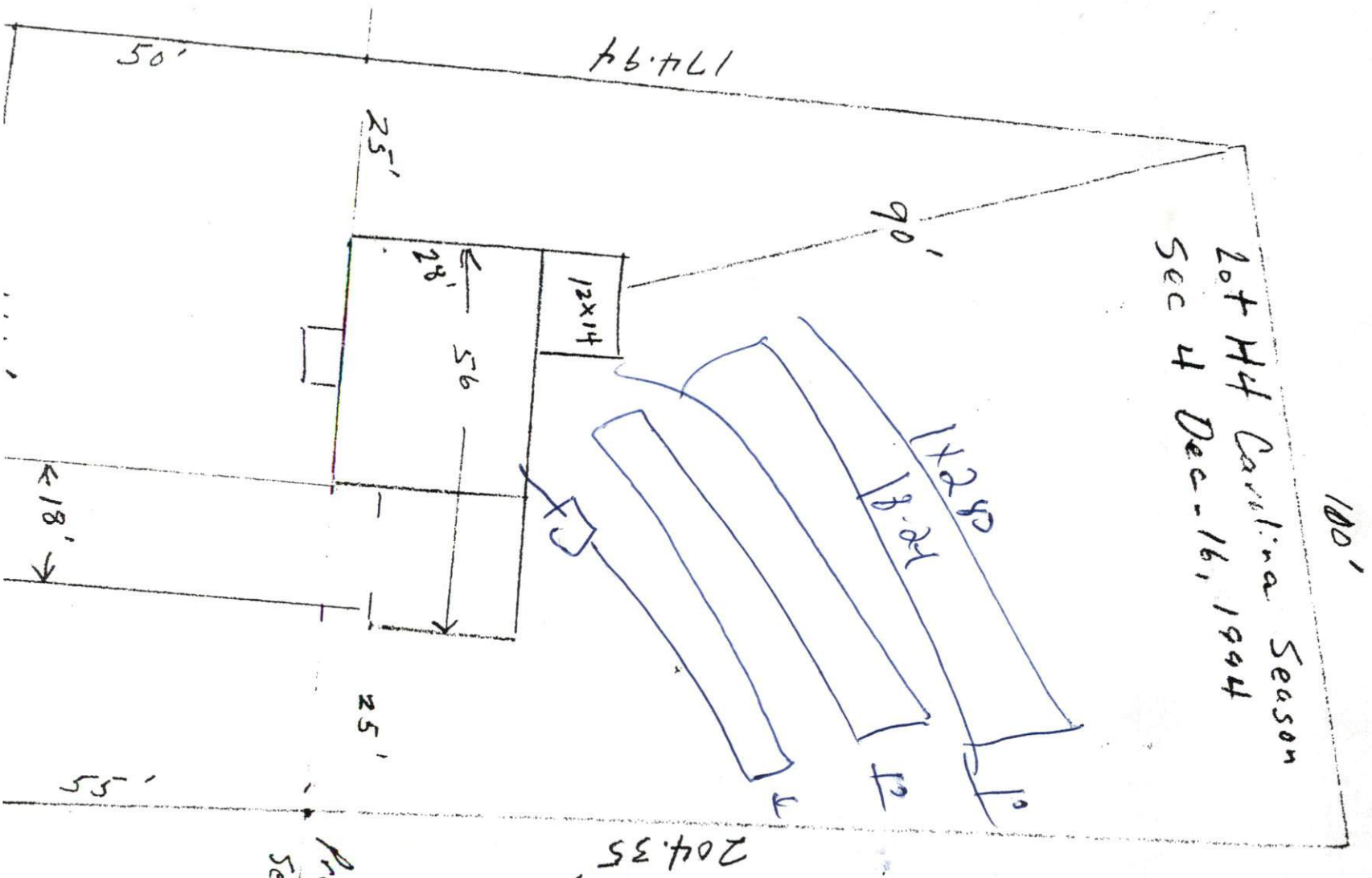
Show profile locations and other site features (dimensions, reference or benchmark, and North).



(#####)

Go/14 Course

20th H4 Carolina Season
Sec 4 Dec-16, 1944



204.35'
Proposed
Set back
Check (No.)
on
Don't
for
H4
or
H4
or
H4
or
H4
or

Yewin

910

639

4133