

COMMENTS: _____

LANDSCAPE POSITIONS	GROUP	TEXTURES	.1955 LTAR	CONSISTENCE MOIST	WET
R-RIDGE	I	S-SAND	1.2 - 0.8	VFR-VERY FRIABLE	NS-NON-STICKY
S-SHOULDER SLOPE		LS-LOAMY SAND			
L-LINEAR SLOPE	II	SL-SANDY LOAM	0.8 - 0.6	FR-FRIABLE	SS-SLIGHTLY STICKY
FS-FOOT SLOPE		L-LOAM			
N-NOSE SLOPE					
H-HEAD SLOPE	III	SI-SILT-	0.6 - 0.3	VFI-VERY FIRM	VS-VERY STICKY
CC-CONCLAVE SLOPE		SIL-SILT LOAM			
CV-CONVEX SLOPE		CL-CLAY LOAM			
T-TERRACE		SCL-SANDY CLAY LOAM			
FP-FLOOD PLAN		SIC-SILTY CLAY	0.4 - 0.1	EFI-EXTREMELY FIRM	NP-NON-PLASTIC
		C-CLAY			
		SC-SANDY CLAY			
					SP-SLIGHTLY STICKY
					P-PLASTIC
					VP-VERY PLASTIC

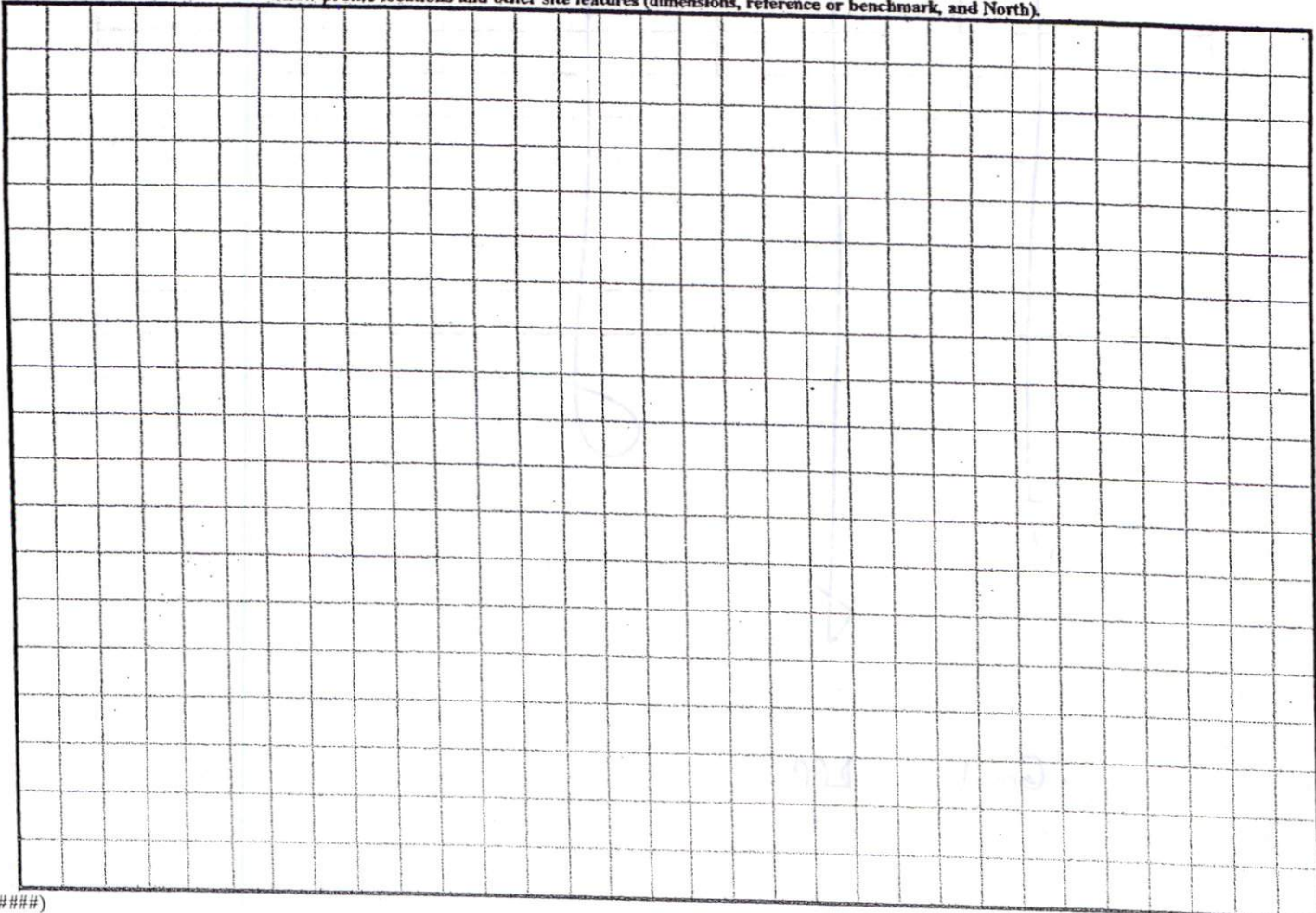
STRUCTURE

- SG-SINGLE GRAIN
- M-MASSIVE
- CR-CRUMB
- GR-GRANULAR
- SBK-SUBANGULAR BLOCKY
- ABK-ANGULAR BLOCKY
- PL-PLATY
- PR-PRISMATIC

MINERALOGY

- SLIGHTLY EXPANSIVE
- EXPANSIVE

Show profile locations and other site features (dimensions, reference or benchmark, and North).



(#####)

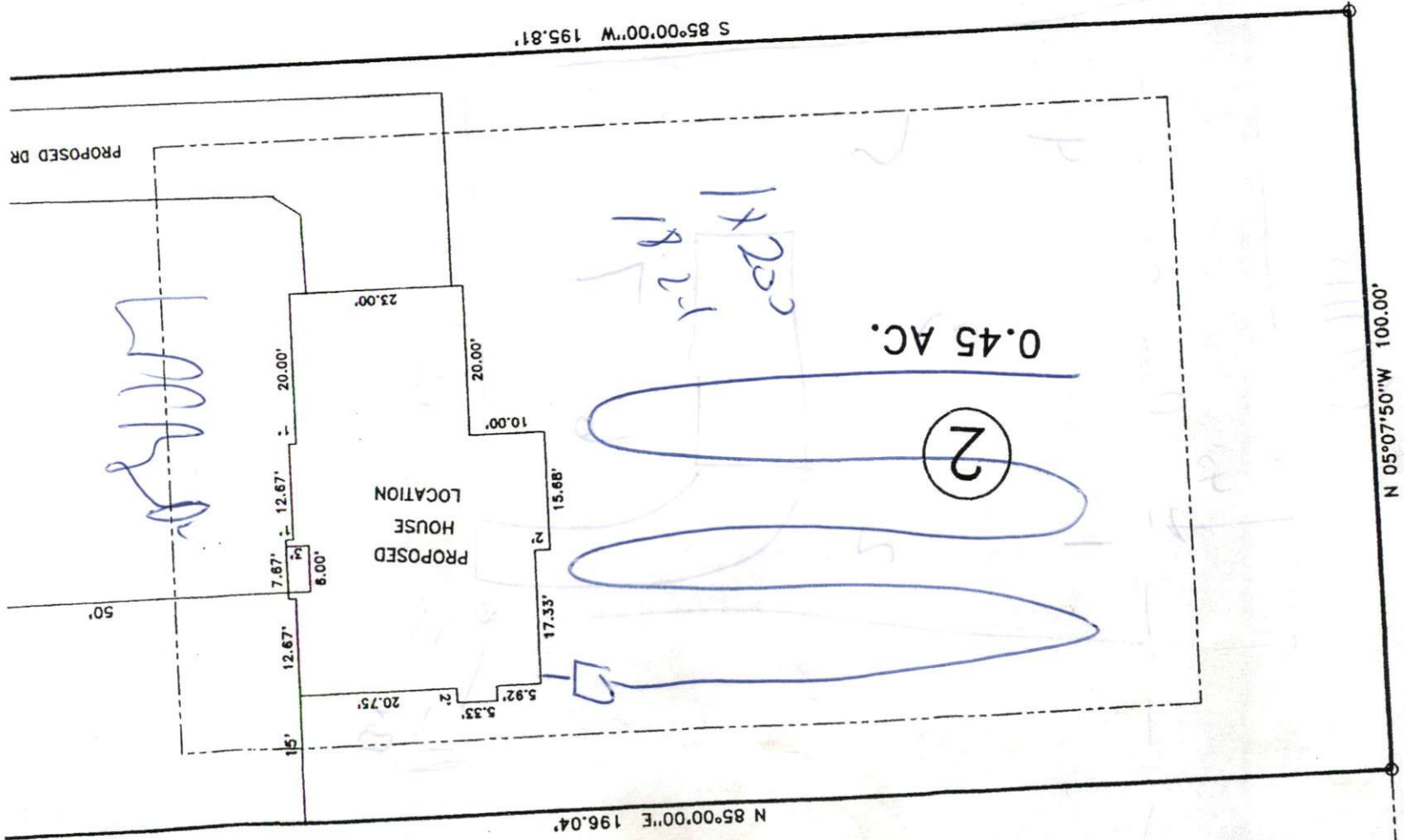
SITE PLAN APPROVAL

DISTRICT RA300 USE SFD

#BEDROOMS 3

10 23 03
Zoning Administrator

①

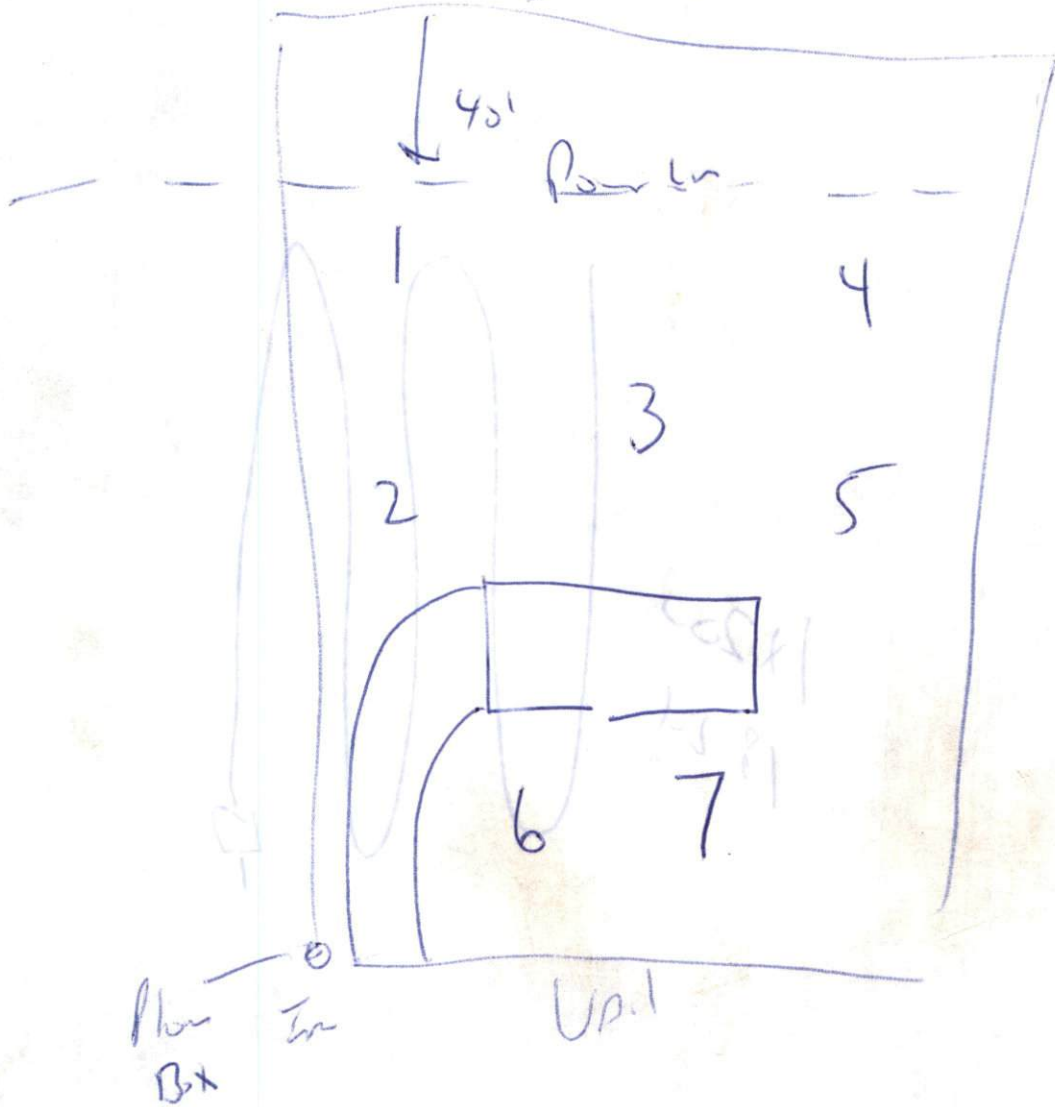


Handwritten notes:
14230
1821

②

"B FALOE LAKE RD." 33' R/W

SA 1115



SA 1115