



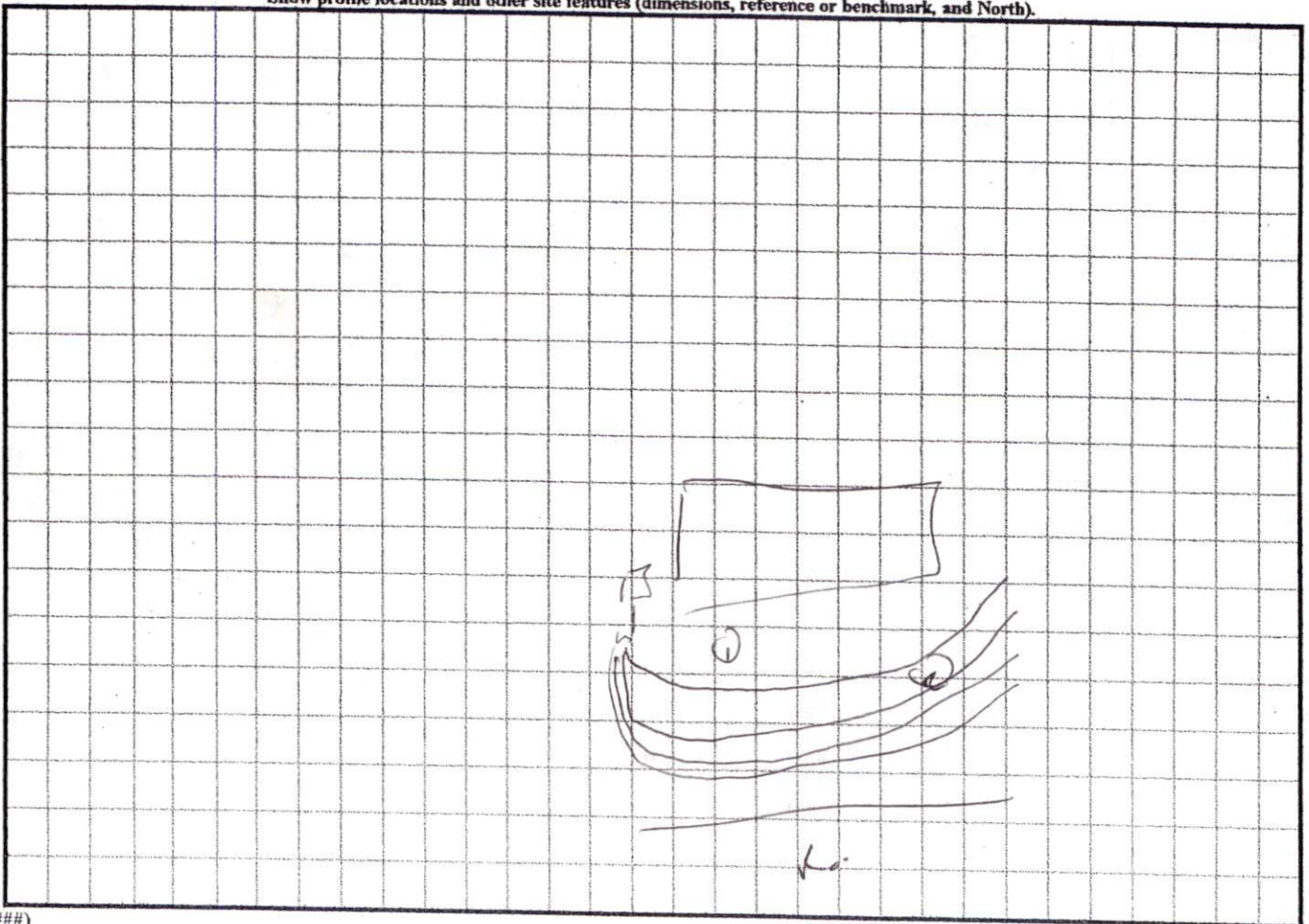
COMMENTS: \_\_\_\_\_  
 \_\_\_\_\_  
 \_\_\_\_\_

<u>LANDSCAPE POSITIONS</u>	<u>GROUP</u>	<u>TEXTURES</u>	<u>.1955 LTAR</u>	<u>CONSISTENCE MOIST</u>	<u>WET</u>
R-RIDGE	I	S-SAND	1.2 - 0.8	VFR-VERY FRIABLE FR-FRIABLE FI-FIRM VFI-VERY FIRM EFI-EXTREMELY FIRM	NS-NON-STICKY SS-SLIGHTLY STICKY S-STICKY VS-VERY STICKY NP-NON-PLASTIC SP-SLIGHTLY STICKY P-PLASTIC VP-VERY PLASTIC
S-SHOULDER SLOPE		LS-LOAMY SAND			
L-LINEAR SLOPE	II	SL-SANDY LOAM	0.8 - 0.6		
FS-FOOT SLOPE		L-LOAM			
N-NOSE SLOPE	III	SI-SILT-	0.6 - 0.3		
H-HEAD SLOPE		SIL-SILT LOAM			
CC-CONCLAVE SLOPE		CL-CLAY LOAM			
CV-CONVEX SLOPE		SCL-SANDY CLAY LOAM			
T-TERRACE		SICL-SILTY CLAY LOAM			
FP-FLOOD PLAN	IV	SIC-SILTY CLAY	0.4 - 0.1		
		C-CLAY			
		SC-SANDY CLAY			

STRUCTURE  
 SG-SINGLE GRAIN  
 M-MASSIVE  
 CR-CRUMB  
 GR-GRANULAR  
 SBK-SUBANGULAR BLOCKY  
 ABK-ANGULAR BLOCKY  
 PL-PLATY  
 PR-PRISMATIC

MINERALOGY  
 SLIGHTLY EXPANSIVE  
 EXPANSIVE

Show profile locations and other site features (dimensions, reference or benchmark, and North).



(#####)



N/F  
EMILY B. MORGAN  
D.B.647 PG.946

SITE PLAN APPROVAL  
DISTRICT B140 USE SFD  
#BEDROOMS 3  
9-5-03  
Zoning Administrator

Date: 36°10'44"E  
83.41'

N 36°10'44"E  
102.30'

N 38°57'41"E  
387.68'

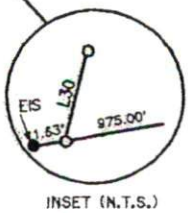
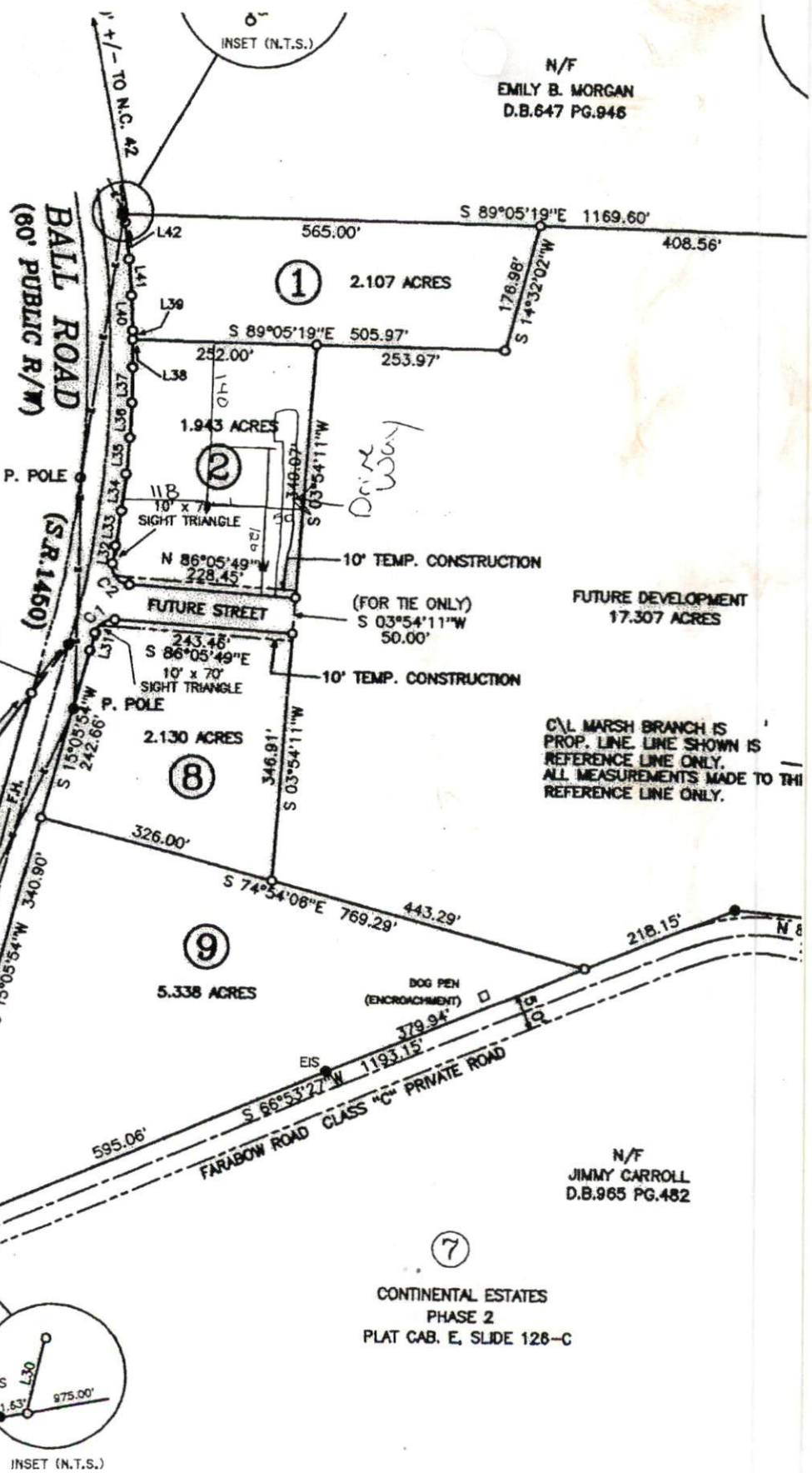
P. POLE  
S 15°05'54"W 505.85'

N 18°36'28"E  
315.45'

S 14°30'39"W  
222.07'

N 14°30'39"E  
227.41'

N/F  
BARRY SMITH  
D.B.875 PG.720



C/L MARSH BRANCH IS  
PROP. LINE. LINE SHOWN IS  
REFERENCE LINE ONLY.  
ALL MEASUREMENTS MADE TO THIS  
REFERENCE LINE ONLY.

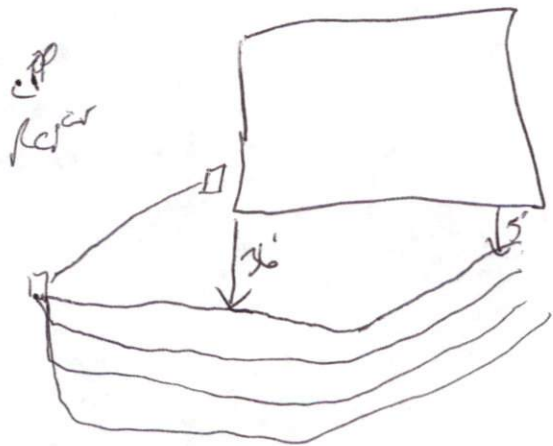
FUTURE DEVELOPMENT  
17.307 ACRES

7  
CONTINENTAL ESTATES  
PHASE 2  
PLAT CAB. E, SLIDE 126-C

N/F  
JIMMY CARROLL  
D.B.965 PG.482

N/F  
L SMITH  
24 PG.623  
C, SLIDE 145-C

4/1 100  
18-24



100  
18-24