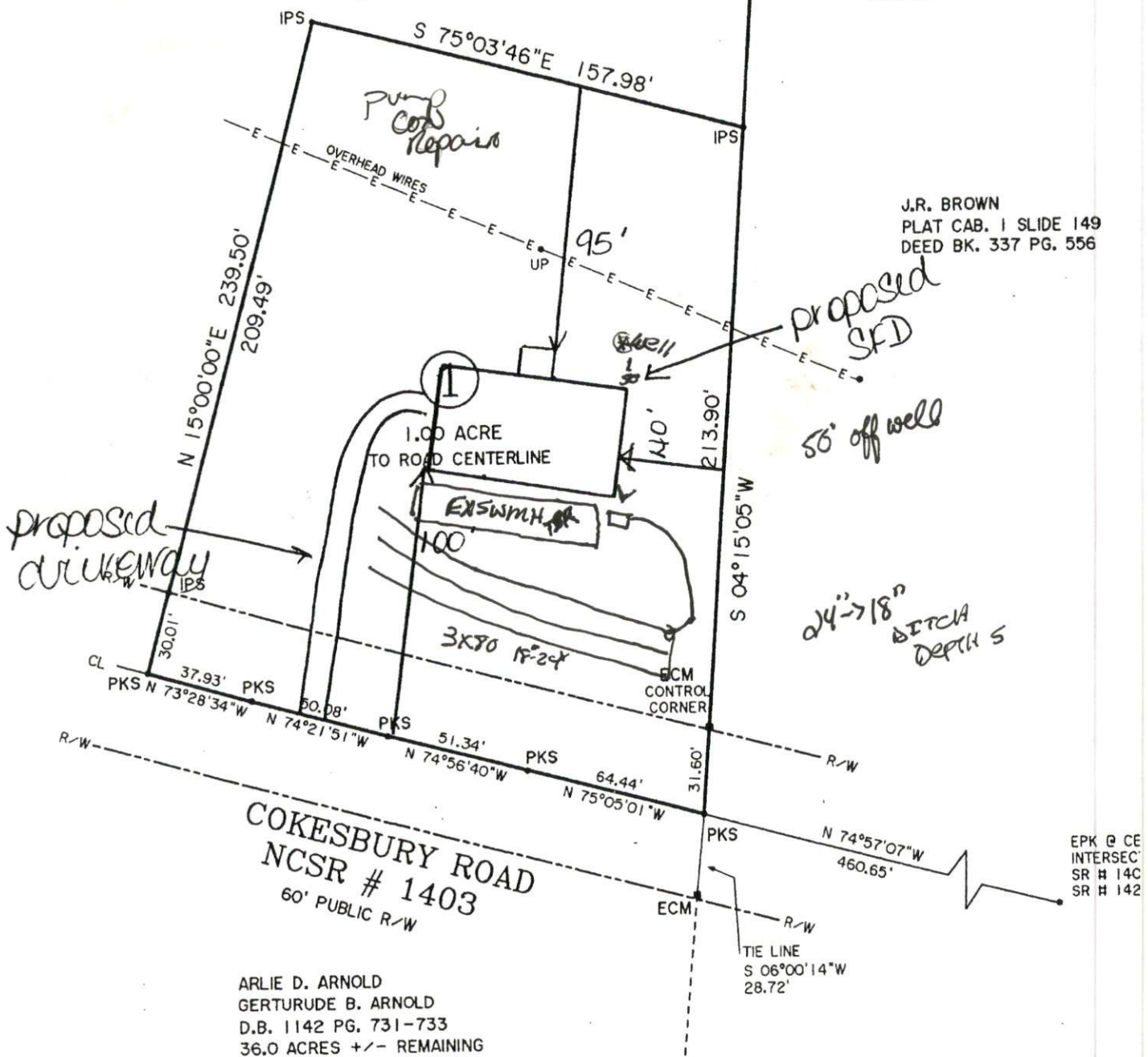


ARLIE D. ARNOLD
 GERTURUDE B. ARNOLD
 D.B. 1142 PG. 731-733
 36.0 ACRES +/- REMAINING

1-50



J.R. BROWN
 PLAT CAB. 1 SLIDE 149
 DEED BK. 337 PG. 556

ARLIE D. ARNOLD
 GERTURUDE B. ARNOLD
 D.B. 1142 PG. 731-733
 36.0 ACRES +/- REMAINING

SITE PLAN APPROVAL
 DISTRICT RA30 USE SFD
 #BEDROOMS 3
5-20-03 Johnson
 Zoning Administrator