

SITE/SOIL EVALUATION FOR ON-SITE WASTEWATER

APPLICANT NAME _____

FACTORS		PROFILES												
		1	2	3	4	5	6	7	8	9	10			
LANDSCAPE POSITION	.1940													
SLOPE (%)	.1940													
HORIZON 1 DEPTH		0.48												
Texture Group	.1941(A)(1)	sel												
Consistence	.1941													
Structure	.1941(A)(2)													
Mineralogy	.1941(A)(3)													
HORIZON 2 DEPTH														
Texture Group	.1941(A)(1)													
Consistence	.1941													
Structure	.1941(A)(2)													
Mineralogy	.1941(A)(3)													
HORIZON 3 DEPTH														
Texture Group	.1941(A)(1)													
Consistence	.1941													
Structure	.1941(A)(2)													
Mineralogy	.1941(A)(3)													
HORIZON 4 DEPTH														
Texture Group	.1941(A)(1)													
Consistence	.1941													
Structure	.1941(A)(2)													
Mineralogy	.1941(A)(3)													
SOIL WETNESS	.1942													
RESTRICTIVE HORIZON	.1944													
SAPROLITE	.1943/.1956													
CLASSIFICATION	.1948													
LONG TERM ACCEPTANCE RATE	.1955													

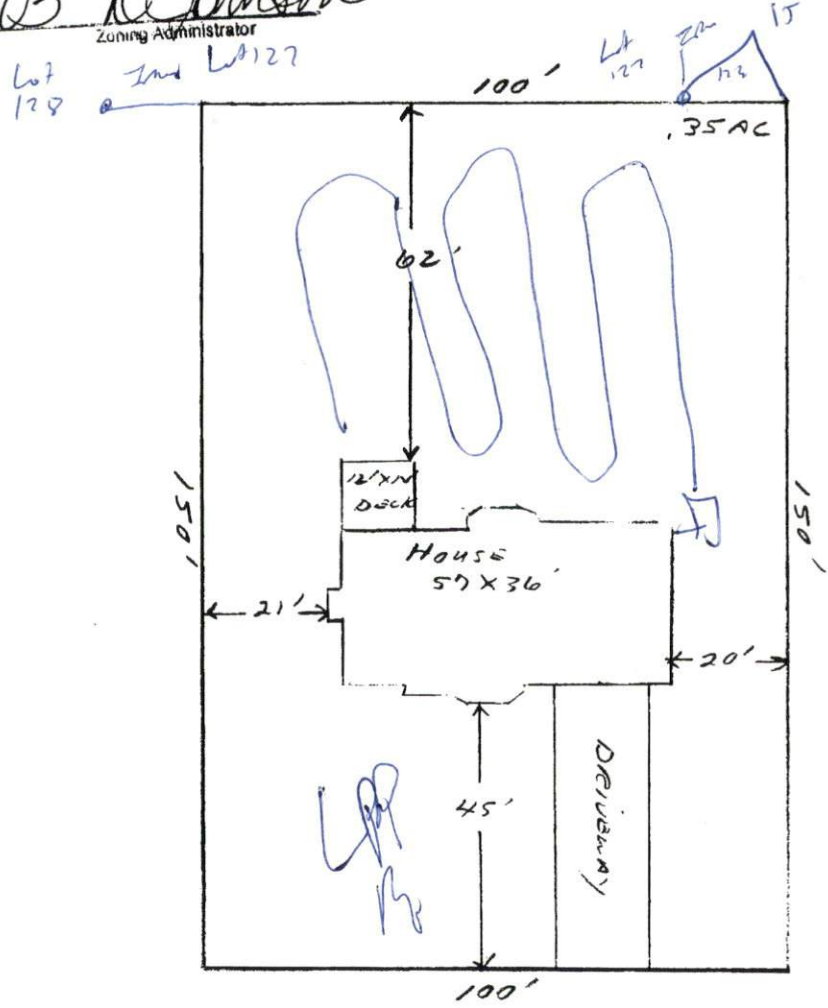
L 7AR
 1x24
 18.24

1" = 30'

SITE PLAN APPROVAL
DISTRICT RAZOR USE CED

REVISIONS 3
3-28-03 [Signature]
Zoning Administrator

HARNETT COUNTY CENTRAL PERMITTING
APPLICATION # _____
JOB NAME _____
DATE PLANS RECEIVED _____
SITE PLANS APPROVED _____
APPROVED BY _____



Lot #133 Crestview
Wm Kent Pierce Inc.