

# SITE/SOIL EVALUATION FOR ON-SITE WASTEWATER

APPLICANT NAME \_\_\_\_\_

FACTORS		PROFILES									
		1	2	3	4	5	6	7	8	9	10
LANDSCAPE POSITION	.1940	L	L	L	L						
SLOPE (%)	.1940	Z	Z	Z	Z						
HORIZON 1 DEPTH		0-4									
Texture Group	.1941(A)(1)	SL									
Consistence	.1941	FL									
Structure	.1941(A)(2)	CL									
Mineralogy	.1941(A)(3)	NSNP									
HORIZON 2 DEPTH		4-10									
Texture Group	.1941(A)(1)	SCL									
Consistence	.1941	VLFM									
Structure	.1941(A)(2)	SL-FM									
Mineralogy	.1941(A)(3)	SSP									
HORIZON 3 DEPTH		10-25 granite									
Texture Group	.1941(A)(1)	C-CL-Rocks									
Consistence	.1941	ST FIRM									
Structure	.1941(A)(2)	SOL MASS									
Mineralogy	.1941(A)(3)	SSP → NSNP									
HORIZON 4 DEPTH											
Texture Group	.1941(A)(1)										
Consistence	.1941										
Structure	.1941(A)(2)										
Mineralogy	.1941(A)(3)										
SOIL WETNESS	.1942	-	-								
RESTRICTIVE HORIZON	.1944										
SAPROLITE	.1943/.1956	28-48"	28-48"								
CLASSIFICATION	.1948										
LONG TERM ACCEPTANCE RATE	.1955	.3	.4	.3	.4						

15-100

# 106 REVIEW OFFICER OF Harnett

MAP OR PLAT TO WHICH THIS CERTIFICATION IS  
BY REQUIREMENTS FOR RECORDING.

Melba P. Wood  
REVIEW OFFICER

PLANNING BOARD CERTIFICATE

The Harnett County Planning Board hereby  
approves the final plat for

BOARD C

The Harnett  
approve

Subdivision \_\_\_\_\_  
Date 3-21-03 Chairman, Harnett County Planning Board DATE \_\_\_\_\_

VICTORIA HILLS S/D  
PHASE 3  
MAP #2001 PG.1416-1418

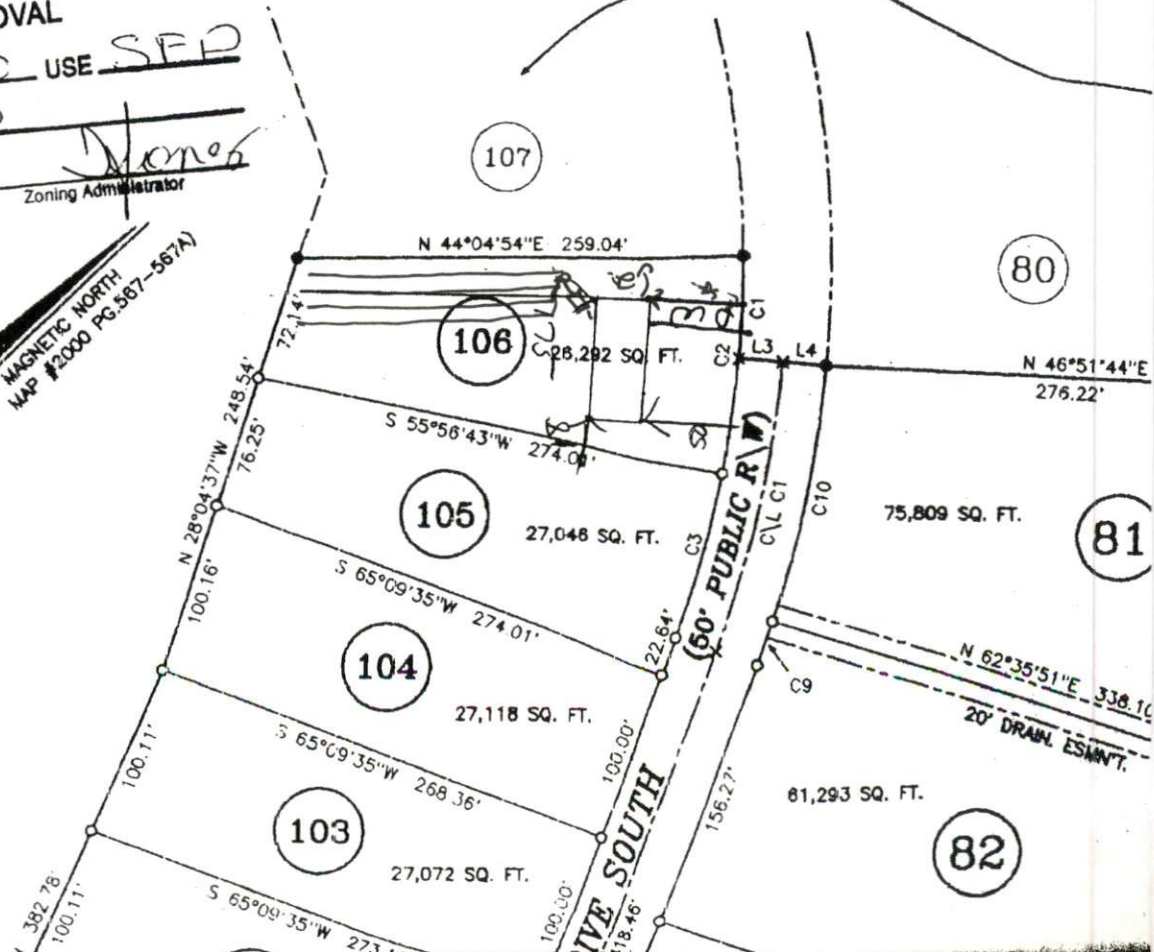
SITE PLAN APPROVAL

DISTRICT RA30 USE SFD

#BEDROOMS 3

Date 3-21-03 Zoning Administrator [Signature]

MAP IN  
DATE



FUTURE DEVELOPMENT