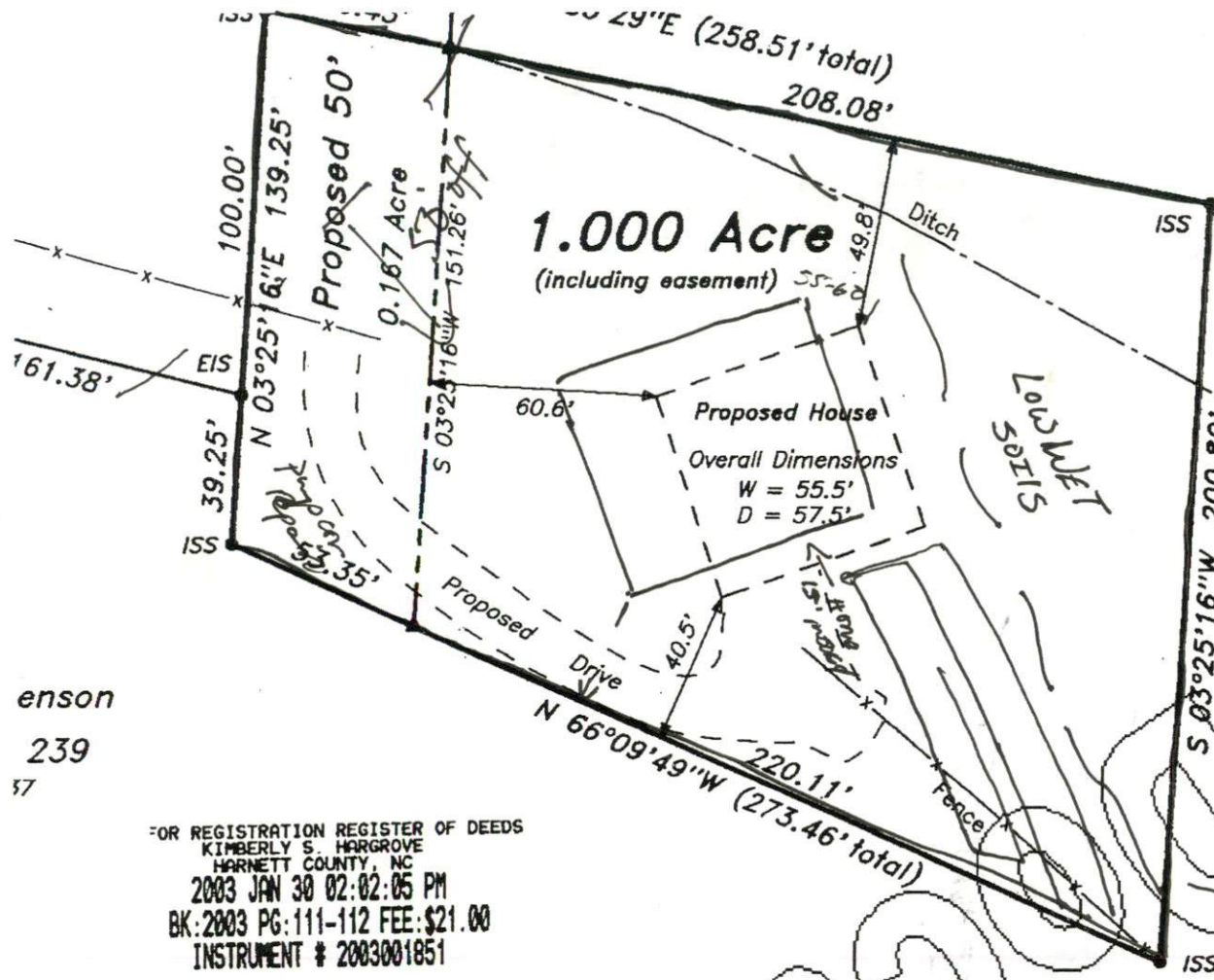


SITE/SOIL EVALUATION FOR ON-SITE WASTEWATER

APPLICANT NAME _____

FACTORS		PROFILES									
		1	2	3	4	5	6	7	8	9	10
LANDSCAPE POSITION	.1940	L	L	L	L						
SLOPE (%)	.1940	3	3	3	3						
HORIZON 1 DEPTH		0-12		0-18							
Texture Group	.1941(A)(1)	SL		SL							
Consistence	.1941	PK		PK							
Structure	.1941(A)(2)	cd		cd							
Mineralogy	.1941(A)(3)	NBNP		NBNP							
HORIZON 2 DEPTH		12-18		18-34							
Texture Group	.1941(A)(1)	SL		SL							
Consistence	.1941	PK		PK							
Structure	.1941(A)(2)	cd		cd							
Mineralogy	.1941(A)(3)	NBNP		NBNP							
HORIZON 3 DEPTH		24-36		24-36							
Texture Group	.1941(A)(1)	SL		SL							
Consistence	.1941	PK		PK							
Structure	.1941(A)(2)	cd		cd							
Mineralogy	.1941(A)(3)	NBNP		NBNP							
HORIZON 4 DEPTH											
Texture Group	.1941(A)(1)										
Consistence	.1941										
Structure	.1941(A)(2)										
Mineralogy	.1941(A)(3)										
SOIL WETNESS	.1942	18"	30	36	32						
RESTRICTIVE HORIZON	.1944										
SAPROLITE	.1943/.1956										
CLASSIFICATION	.1948										
LONG TERM ACCEPTANCE RATE	.1955	—	.95	.4	.4						

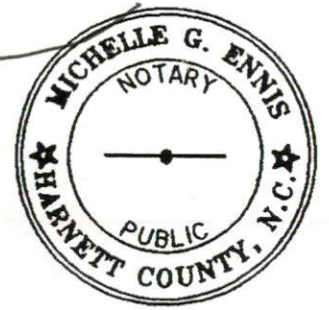


being a portion of
Deed Book 1244, -P
unrecorded map en
Daywood Langdon"
by W. R. Lambert, &

Affidavit for L

I, Beverly L. Stephenson, c
acres located in Grove Tow
anticipate deeding at
Stephenson. This the 29th

Beverly L. Stephenson
80 Ebenezer Church Rd., Coal



enson
239
57

FOR REGISTRATION REGISTER OF DEEDS
KIMBERLY S. HARGROVE
HARNETT COUNTY, NC
2003 JAN 30 02:02:05 PM
BK:2003 PG:111-112 FEE:\$21.00
INSTRUMENT # 2003001851

"Division of Heirs"

Revisions:	Map For:		STREAMLINE LAND S	
	Clay Wayne Stephenson		870 N.C. Hwy. 55 West, Phone: 910-897-7715	
	695 Maple Road, Angier, NC 27501 (910) 897-8247		DATE: 1-28-2003	SURVEYED BY:
	TOWNSHIP: Grove	COUNTY: Harnett	SCALE: 1" = 50'	DRAWN BY: A
	STATE: NORTH CAROLINA	out of PID 070692 0010 01	CHECKED & CLOSURE BY:	
	ZONE: RA-30	Parcel Number: out of PIN 0692-60-1837		



MAP # 200

