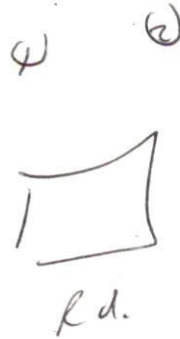


# SITE/ L EVALUATION FOR ON-SITE WASTEWATER

APPLICANT NAME \_\_\_\_\_

D. ....

FACTORS		PROFILES												
		1	2	3	4	5	6	7	8	9	10			
LANDSCAPE POSITION	.1940													
SLOPE (%)	.1940													
HORIZON 1 DEPTH		0-40	0-40											
Texture Group	.1941(A)(1)	LS	LS											
Consistence	.1941	VF	VF											
Structure	.1941(A)(2)	G	G											
Mineralogy	.1941(A)(3)	NCV	NCV											
HORIZON 2 DEPTH														
Texture Group	.1941(A)(1)													
Consistence	.1941													
Structure	.1941(A)(2)													
Mineralogy	.1941(A)(3)													
HORIZON 3 DEPTH														
Texture Group	.1941(A)(1)													
Consistence	.1941													
Structure	.1941(A)(2)													
Mineralogy	.1941(A)(3)													
HORIZON 4 DEPTH														
Texture Group	.1941(A)(1)													
Consistence	.1941													
Structure	.1941(A)(2)													
Mineralogy	.1941(A)(3)													
SOIL WETNESS	.1942													
RESTRICTIVE HORIZON	.1944													
SAPROLITE	.1943/.1956													
CLASSIFICATION	.1948	S	S											
LONG TERM ACCEPTANCE RATE	.1955	.8	.8											

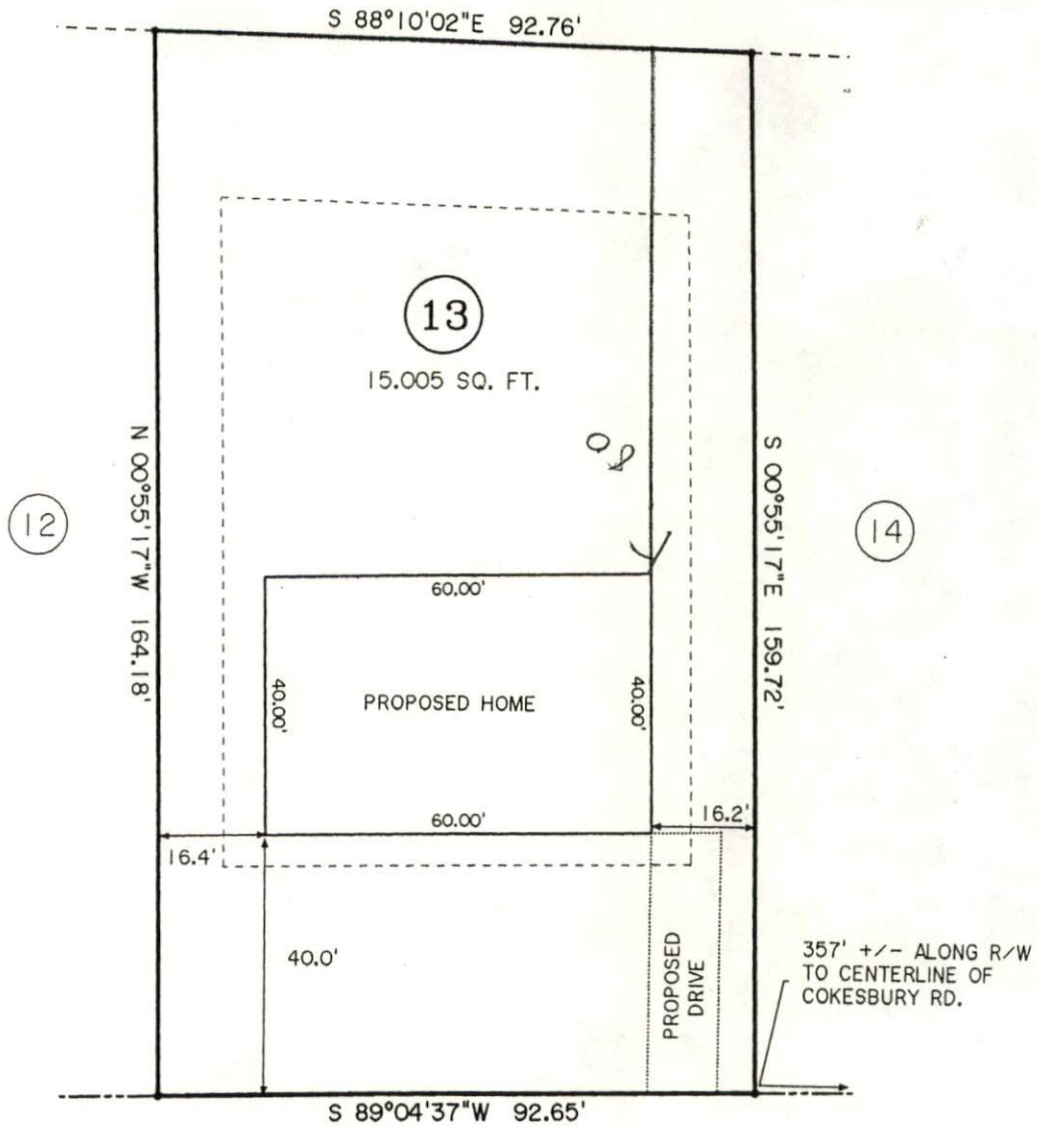
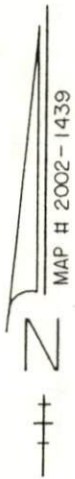
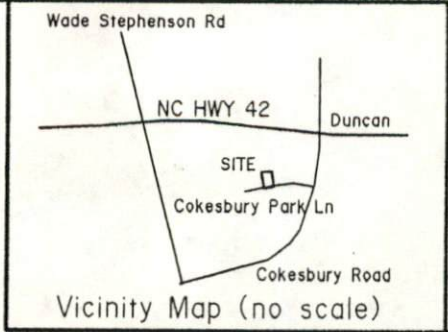


NOTES  
 AREA BY COORDINATES  
 THIS LOT IS NOT LOCATED IN A FLOOD HAZARD AREA AS DETERMINED BY FEMA.  
 MAP # 37085C0010 D; ZONE X; EFF. DATE 4/16/90

IMPERVIOUS AREA CALCULATION

MAXIMUM ALLOWABLE IMPERVIOUS AREA - 3,800 SQ. FT.  
 TOTAL PROPOSED IMPERVIOUS AREA - 2,851 SQ. FT.  
 IMPERVIOUS AREA UNDER ALLOWABLE - 949 SQ. FT.

LARRY TUTOR et ux  
 MAP # 2002-1177



COKESBURY PARK LANE  
 50' PUBLIC R/W



PROPOSED PLAN FOR  
**DICK ANDERSON**  
 LOT 13 COKESBURY PARK PHASE I  
 MAP # 2002-1439  
 BUCKHORN TOWNSHIP  
 HARNETT COUNTY - NORTH CAROLINA  
 SCALE : 1" = 30' - JANUARY 20, 2003