



PLANNING BOARD CERTIFICATE

The Harnett County Planning Board hereby approves the final plat for

BOARD OF COMMISSIONERS' CERTIFICATE

The Harnett County Board of Commissioners hereby approve this final plat for the

Subdivision \_\_\_\_\_  
 Date \_\_\_\_\_ Chairman, Harnett County Planning Board

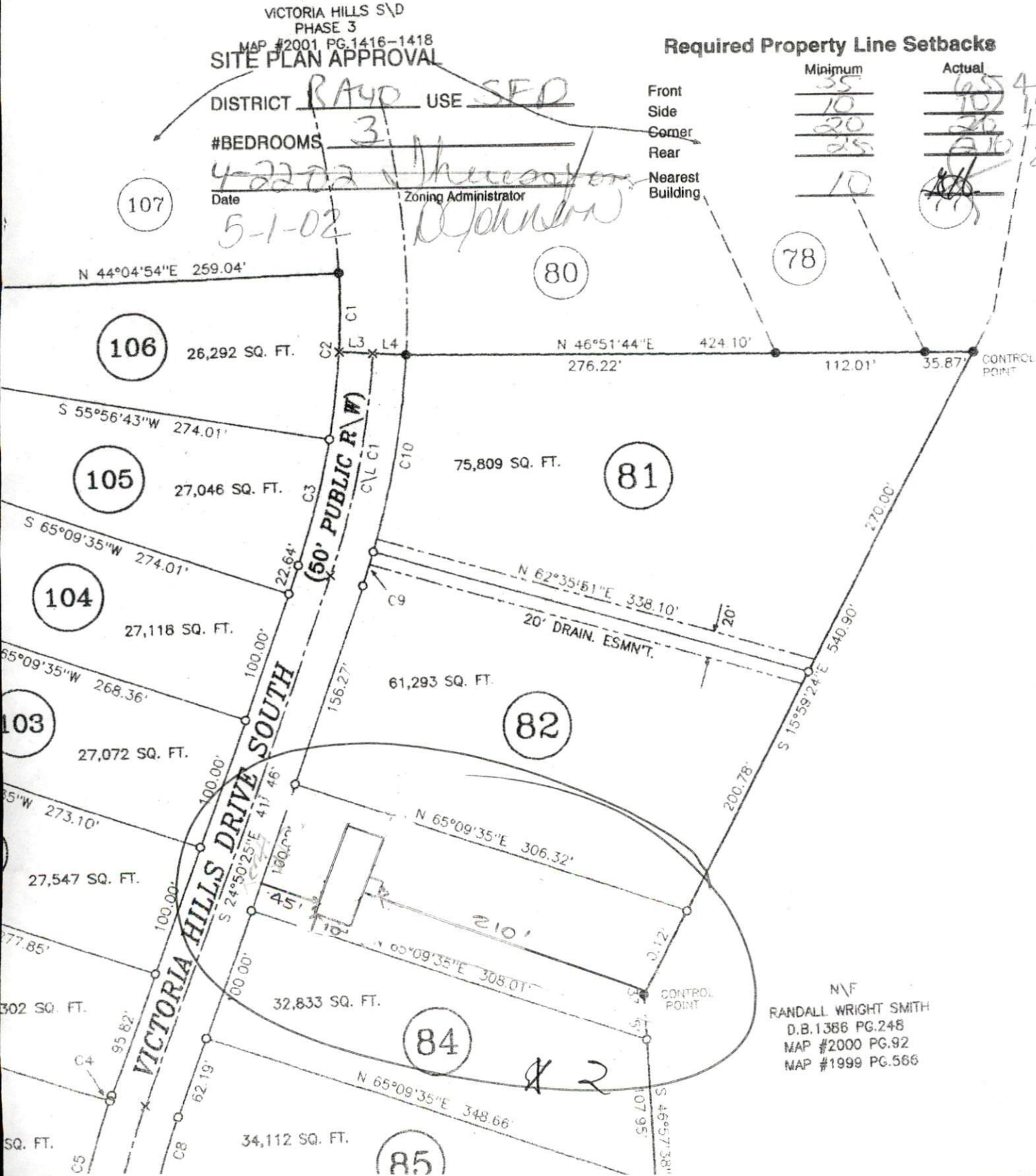
Subdivision \_\_\_\_\_  
 DATE \_\_\_\_\_ Chairman, Harnett County Board of Commissioners

VICTORIA HILLS S/D  
 PHASE 3  
 MAP #2001 PG.1416-1418  
**SITE PLAN APPROVAL**

DISTRICT RAYD USE SED  
 #BEDROOMS 3  
4-22-02  
 Date \_\_\_\_\_ Zoning Administrator  
5-1-02

**Required Property Line Setbacks**

	Minimum	Actual
Front	35	45'
Side	10	15'
Corner	20	20
Rear	25	210'
Nearest Building	10	



CERT  
 (WE)  
 PROPER  
 OF SUE  
 SETBA  
 SITES  
 SHOWN  
 COUNT

DATE  
 TAX P  
 OWNEI  
 OWNE

N\F  
 RANDALL WRIGHT SMITH  
 D.B.1386 PG.248  
 MAP #2000 PG.92  
 MAP #1999 PG.566