

# SITE/SOIL EVALUATION FOR ON-SITE WASTEWATER

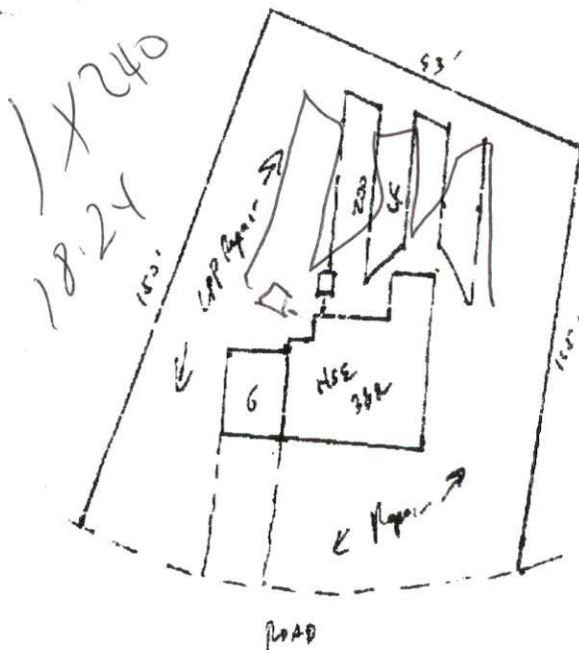
FACTORS		PROFILES									
		1	2	3	4	5	6	7	8	9	10
LANDSCAPE POSITION	.1940										
SLOPE (%)	.1940										
HORIZON 1 DEPTH		0.48									
TEXTURE GROUP	.1941(A)(1)	SCC									
CONSISTENCE	.1941										
STRUCTURE	.1941(A)(2)										
MINERALOGY	.1941(A)(3)										
HORIZON 2 DEPTH											
TEXTURE GROUP	.1941(A)(1)										
CONSISTENCE	.1941										
STRUCTURE	.1941(A)(2)										
MINERALOGY	.1941(A)(3)										
HORIZON 3 DEPTH											
TEXTURE GROUP	.1941(A)(1)										
CONSISTENCE	.1941										
STRUCTURE	.1941(A)(2)										
MINERALOGY	.1941(A)(3)										
HORIZON 4 DEPTH											
TEXTURE GROUP	.1941(A)(1)										
CONSISTENCE	.1941										
STRUCTURE	.1941(A)(2)										
MINERALOGY	.1941(A)(3)										
SOIL WETNESS	.1942										
RESTRICTIVE HORIZON	.1944										
SAPROLITE	.1943/ 1956										
CLASSIFICATION	.1948										
LONG TERM ACCEPTANCE RANGE	.1955	.5	—————								

1x240  
18.24

# Southeastern Soil & Environmental Associates, Inc.

P.O. Box 9321  
Fayetteville, NC 28311-7690  
Phone/Fax (910) 822-4540

*WESTVIEW  
LOT 81  
Proposed Septic*



### Typical Soil

0-4B LS/S loam  
 C<sub>1</sub> 2-4B  
 L<sub>1</sub> 200' LF UNSATURATED

1"=40'

SOIL/SITE EVALUATION • SOIL PHYSICAL ANALYSIS • WETLANDS MAPPING • LAND USE/SUBDIVISION PLANNING  
 GROUNDWATER DRAINAGE/MOUNDING • SURFACE/SUBSURFACE WASTE TREATMENT SYSTEMS EVALUATION & DESIGN