

# SITE/SOIL EVALUATION FOR ON-SITE WASTEWATER

FACTORS		PROFILES									
		1	2	3	4	5	6	7	8	9	10
LANDSCAPE POSITION	.1940										
SLOPE (%)	.1940										
HORIZON 1 DEPTH											
TEXTURE GROUP	.1941(A)(1)										
CONSISTENCE	.1941										
STRUCTURE	.1941(A)(2)										
MINERALOGY	.1941(A)(3)										
HORIZON 2 DEPTH											
TEXTURE GROUP	.1941(A)(1)										
CONSISTENCE	.1941										
STRUCTURE	.1941(A)(2)										
MINERALOGY	.1941(A)(3)										
HORIZON 3 DEPTH											
TEXTURE GROUP	.1941(A)(1)										
CONSISTENCE	.1941										
STRUCTURE	.1941(A)(2)										
MINERALOGY	.1941(A)(3)										
HORIZON 4 DEPTH											
TEXTURE GROUP	.1941(A)(1)										
CONSISTENCE	.1941										
STRUCTURE	.1941(A)(2)										
MINERALOGY	.1941(A)(3)										
SOIL WETNESS	.1942										
RESTRICTIVE HORIZON	.1944										
SAPROLITE	.1943/.1956										
CLASSIFICATION	.1948										
LONG TERM ACCEPTANCE RANGE	.1955										

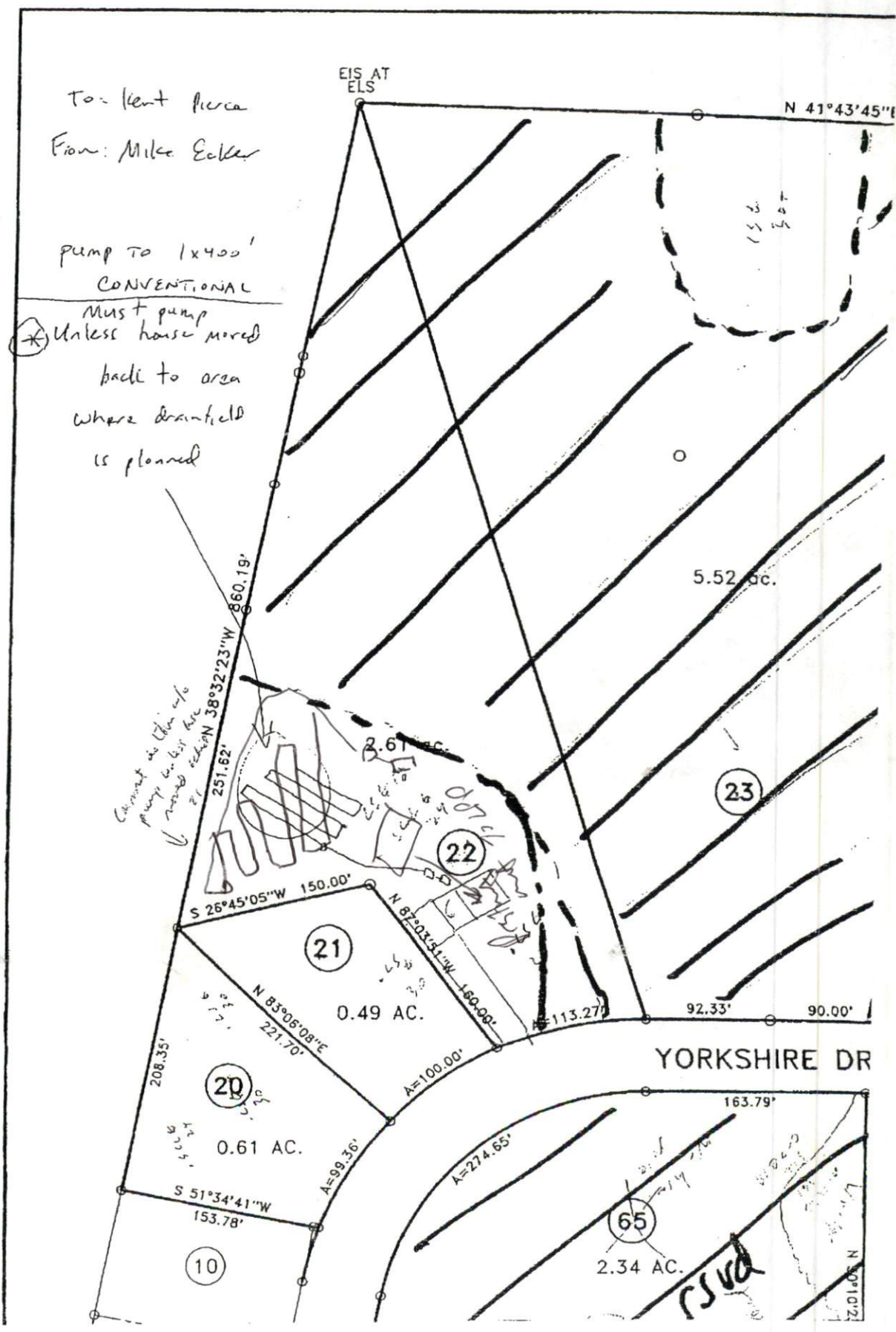
# 1  
 0-120  
 12-1650  
 16-2150  
 C22 for 18'

To: Kent Pierce  
From: Mike Eaker

pump to 1x400'  
CONVENTIONAL

⊗ Must pump  
back to area  
where drainfield  
is planned

ME  
Wed  
AT 3:00



Comment on this info  
pump to be here  
moving station

152  
151

5.52 ac.

21  
0.49 AC.

20  
0.61 AC.

65  
2.34 AC.

23

YORKSHIRE DR

EIS AT  
ELS

CSUD

