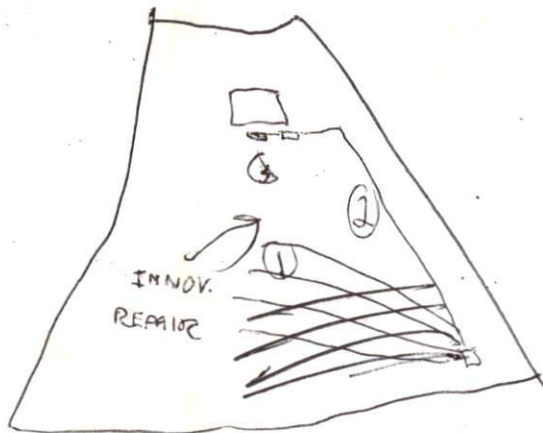


SITE/S EVALUATION FOR ON-SITE WASTEWATER

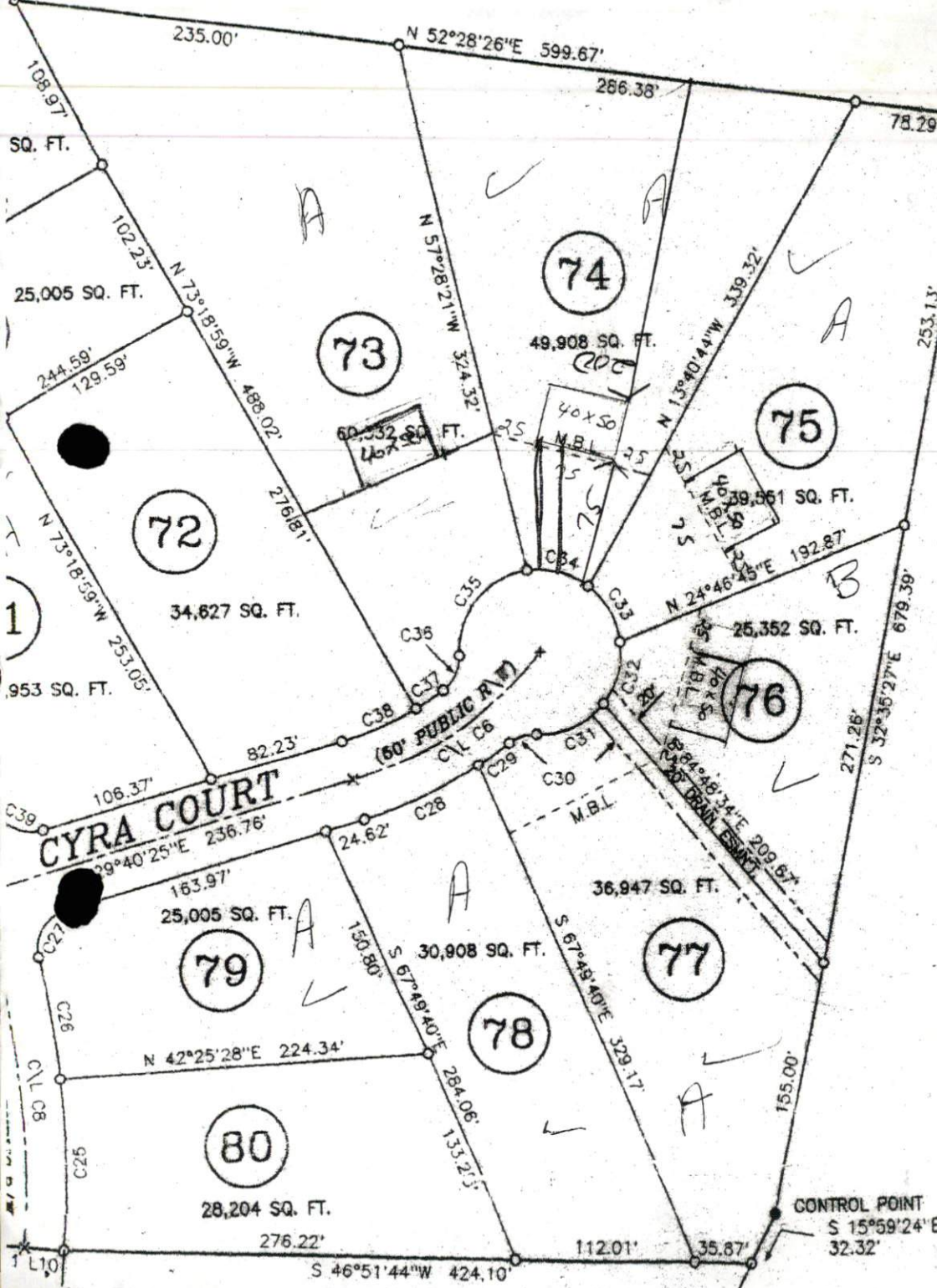
APPLICANT NAME _____

DATE _____

FACTORS		PROFILES									
		1	2	3	4	5	6	7	8	9	10
LANDSCAPE POSITION	.1940										
SLOPE (%)	.1940										
HORIZON 1 DEPTH		0-8	0-6	0-0"							
Texture Group	.1941(A)(1)	SL	SL	SL							
Consistence	.1941										
Structure	.1941(A)(2)										
Mineralogy	.1941(A)(3)										
HORIZON 2 DEPTH		8-12	6-16	10"+							
Texture Group	.1941(A)(1)	SL	SL	C							
Consistence	.1941			FL							
Structure	.1941(A)(2)			SBX							
Mineralogy	.1941(A)(3)			S/S							
HORIZON 3 DEPTH		12-30"	16"								
Texture Group	.1941(A)(1)	C	C								
Consistence	.1941		FR								
Structure	.1941(A)(2)		SBX								
Mineralogy	.1941(A)(3)		SS/S								
HORIZON 4 DEPTH											
Texture Group	.1941(A)(1)										
Consistence	.1941										
Structure	.1941(A)(2)										
Mineralogy	.1941(A)(3)										
SOIL WETNESS	.1942	SBX	35'								
RESTRICTIVE HORIZON	.1944										
SAPROLITE	.1943/1956										
CLASSIFICATION	.1948	PS	PS	PS							
LONG TERM ACCEPTANCE RATE	.1955	.3	.3	.3							



4 100' LINES
 18" DEEP O.C.
 START TOP LINE AS
 FAR BACK ON PROP.
 AS POSSIBLE



N/F
 RANDALL WRIGHT SMITH
 D.B.1386 PG.248
 MAP #2000 PG.92

SITE PLAN APPROVAL

DISTRICT RAYD USE SFP

#BEDROOMS 3

2-11-02
 Zoning Administrator

APPROVED

[Signature]

Required Property Line Setbacks

	Actual	Minimum
Front	75	35
Side	25	10
Corner	20	20
Rear	200	25
Nearest Building	20	20

COURSE	BEARING	DISTANCE
C18	608.03'	59.26'
C19	579.57'	144.28'
C20	529.57'	236.59'
C21	25.00'	41.75'
C22	608.03'	32.84'
C23	608.03'	131.01'
C24	608.03'	126.91'
C25	658.03'	103.87'
C26	658.03'	77.55'
C27	25.00'	37.44'
C28	257.34'	77.66'
C29	257.34'	23.22'
C30	25.00'	18.43'
C31	50.00'	47.36'
C32	50.00'	40.00'
C33	50.00'	40.00'
C34	50.00'	40.00'
C35	50.00'	73.16'
C36	25.00'	24.64'
C37	207.34'	20.27'
C38	207.34'	49.87'
C39	25.00'	37.44'
C40	658.03'	100.98'
C41	25.00'	39.85'
C42	2197.12'	219.69'
C43	550.98'	49.03'
C44	554.57'	302.81'
C45	2222.12'	273.35'
C46	633.03'	364.43'
C47	232.34'	141.90'
C48	633.03'	143.52'
C49	633.03'	220.91'
C50	59.26'	59.26'
C51	144.28'	143.91'
C52	236.59'	234.63'
C53	41.75'	37.07'
C54	32.84'	32.83'
C55	131.01'	130.76'
C56	126.91'	126.88'
C57	103.87'	103.76'
C58	77.55'	77.51'
C59	37.44'	34.04'
C60	77.66'	77.37'
C61	23.22'	23.22'
C62	18.43'	18.01'
C63	47.36'	45.61'
C64	40.00'	38.94'
C65	40.00'	38.94'
C66	40.00'	38.94'
C67	73.16'	66.81'
C68	24.64'	23.55'
C69	20.27'	20.26'
C70	49.87'	49.75'
C71	37.44'	34.04'
C72	100.98'	100.88'
C73	39.85'	35.76'
C74	219.69'	219.60'
C75	49.03'	49.02'
C76	302.81'	299.06'
C77	273.35'	273.18'
C78	364.43'	359.42'
C79	141.90'	139.70'
C80	143.52'	143.21'
C81	220.91'	219.79'
C82	N 43°07'30"W	59.26'
C83	N 07°28'10"W	143.91'
C84	N 01°48'09"W	234.63'
C85	N 58°50'24"E	37.07'
C86	S 71°46'10"E	32.83'
C87	S 64°02'59"E	130.76'
C88	S 51°53'51"E	126.88'
C89	N 44°51'14"W	103.76'
C90	N 52°45'08"W	77.51'
C91	N 13°13'39"W	34.04'
C92	N 21°01'41"E	77.37'
C93	N 09°47'50"E	23.22'
C94	N 28°19'37"E	18.01'
C95	N 22°18'18"E	45.61'
C96	N 27°45'01"W	38.94'
C97	N 73°35'13"W	38.94'
C98	S 60°34'35"W	38.94'
C99	S 04°15'33"E	66.81'
C100	S 17°56'34"E	23.55'
C101	S 13°05'30"W	20.26'
C102	S 22°46'59"W	49.75'
C103	S 72°34'29"W	34.04'
C104	N 68°55'14"W	100.88'
C105	N 27°39'25"W	35.76'
C106	N 20°52'01"E	219.60'
C107	S 70°46'01"E	49.02'
C108	N 01°02'28"E	299.06'
C109	N 20°12'27"E	273.18'
C110	S 56°49'27"E	359.42'
C111	N 12°10'39"E	139.70'
C112	S 56°49'17"E	143.21'
C113	S 50°19'45"E	219.79'