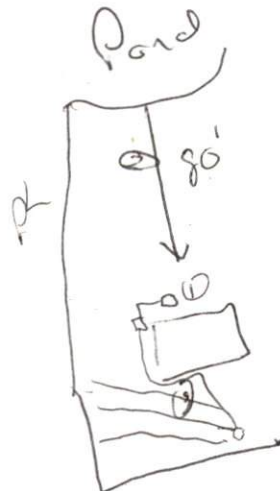


# SITE/S . EVALUATION FOR ON-S WASTEWATER

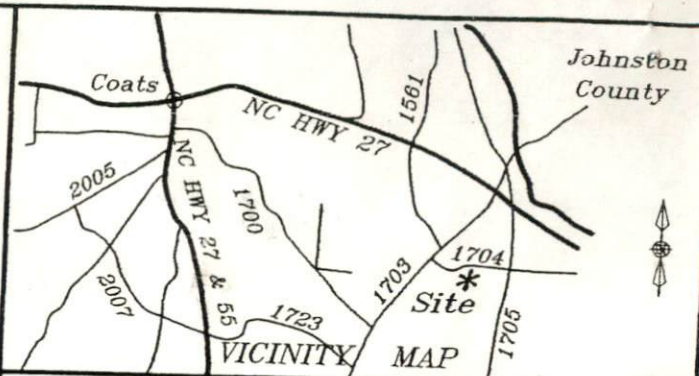
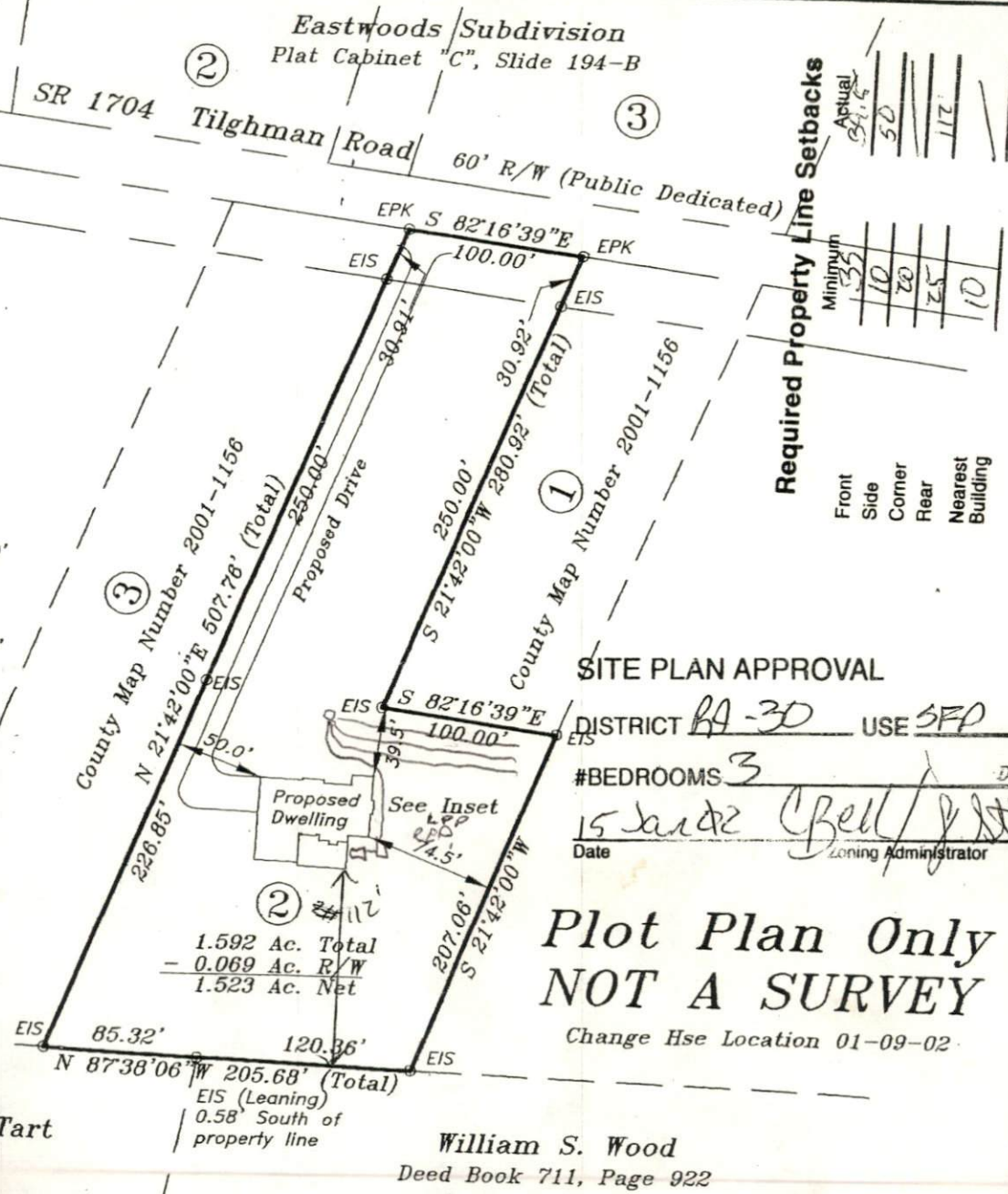
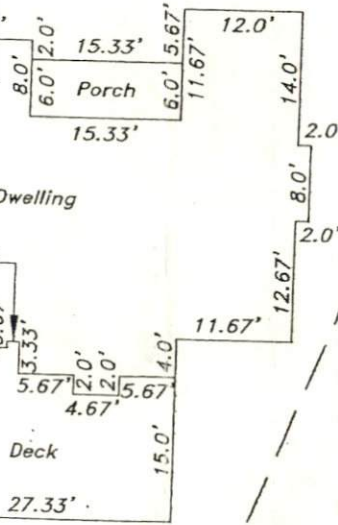
APPLICANT NAME \_\_\_\_\_

DATE \_\_\_\_\_

FACTORS		PROFILES												
		1	2	3	4	5	6	7	8	9	10			
LANDSCAPE POSITION	.1940													
SLOPE (%)	.1940													
HORIZON 1 DEPTH		0-16	0-12	0-14										
Texture Group	.1941(A)(1)	SL	SL	SL										
Consistence	.1941	Vfr	Vfr	Vfr										
Structure	.1941(A)(2)	C	C	C										
Mineralogy	.1941(A)(3)	NCR	NCR	NCR										
HORIZON 2 DEPTH		16-30	12-24	14-30										
Texture Group	.1941(A)(1)	SiO	C	SiO										
Consistence	.1941	fr	fr	fr										
Structure	.1941(A)(2)	SPR	SPR	SPR										
Mineralogy	.1941(A)(3)	SPR	SPR	SPR										
HORIZON 3 DEPTH														
Texture Group	.1941(A)(1)													
Consistence	.1941													
Structure	.1941(A)(2)													
Mineralogy	.1941(A)(3)													
HORIZON 4 DEPTH														
Texture Group	.1941(A)(1)													
Consistence	.1941													
Structure	.1941(A)(2)													
Mineralogy	.1941(A)(3)													
SOIL WETNESS	.1942		18"											
RESTRICTIVE HORIZON	.1944													
SAPROLITE	.1943/.1956													
CLASSIFICATION	.1948	P)	US	P)										
LONG TERM ACCEPTANCE RATE	.1955	.3		.4										



3 x 100'  
ON CONTOUR  
18"-20"



Lot 2 Harnett County  
Map Number 2001-1156

Property Of  
**J. Scott Builders, Inc.**

Averasboro Twp.	Harnett Co.
Scale: 1" = 100'	Date: 01-08-02

Surveyed & Mapped By  
**STANCIL & ASSOCIATES**  
Professional Land Surveyor, P.A.  
P.O. Box 730, Angier, N.C. 27501  
919-639-2133 919-639-2602 (FAX)

**SEAL**  
L-1512  
NORTH CAROLINA  
PROFESSIONAL  
LAND SURVEYOR  
Thomas Lester Stancil

**NOT FOR RECORDATION**

SHA-910