

# SITE/SOIL VALUATION FOR ON-SITE WASTEWATER

APPLICANT NAME \_\_\_\_\_

DATE \_\_\_\_\_

FACTORS		PROFILES									
		1	2	3	4	5	6	7	8	9	10
LANDSCAPE POSITION	.1940										
SLOPE (%)	.1940										
HORIZON 1 DEPTH		0-48									
Texture Group	.1941(A)(1)	SC									
Consistence	.1941										
Structure	.1941(A)(2)										
Mineralogy	.1941(A)(3)										
HORIZON 2 DEPTH											
Texture Group	.1941(A)(1)										
Consistence	.1941										
Structure	.1941(A)(2)										
Mineralogy	.1941(A)(3)										
HORIZON 3 DEPTH											
Texture Group	.1941(A)(1)										
Consistence	.1941										
Structure	.1941(A)(2)										
Mineralogy	.1941(A)(3)										
HORIZON 4 DEPTH											
Texture Group	.1941(A)(1)										
Consistence	.1941										
Structure	.1941(A)(2)										
Mineralogy	.1941(A)(3)										
SOIL WETNESS	.1942										
RESTRICTIVE HORIZON	.1944										
SAPROLITE	.1943/.1956										
CLASSIFICATION	.1948										
LONG TERM ACCEPTANCE RATE	.1955	6									

1 x 200

# Southeastern Soil & Environmental Associates, Inc.

P.O. Box 9321  
 Fayetteville, NC 28311-7696  
 Phone/Fax (910) 822-4540

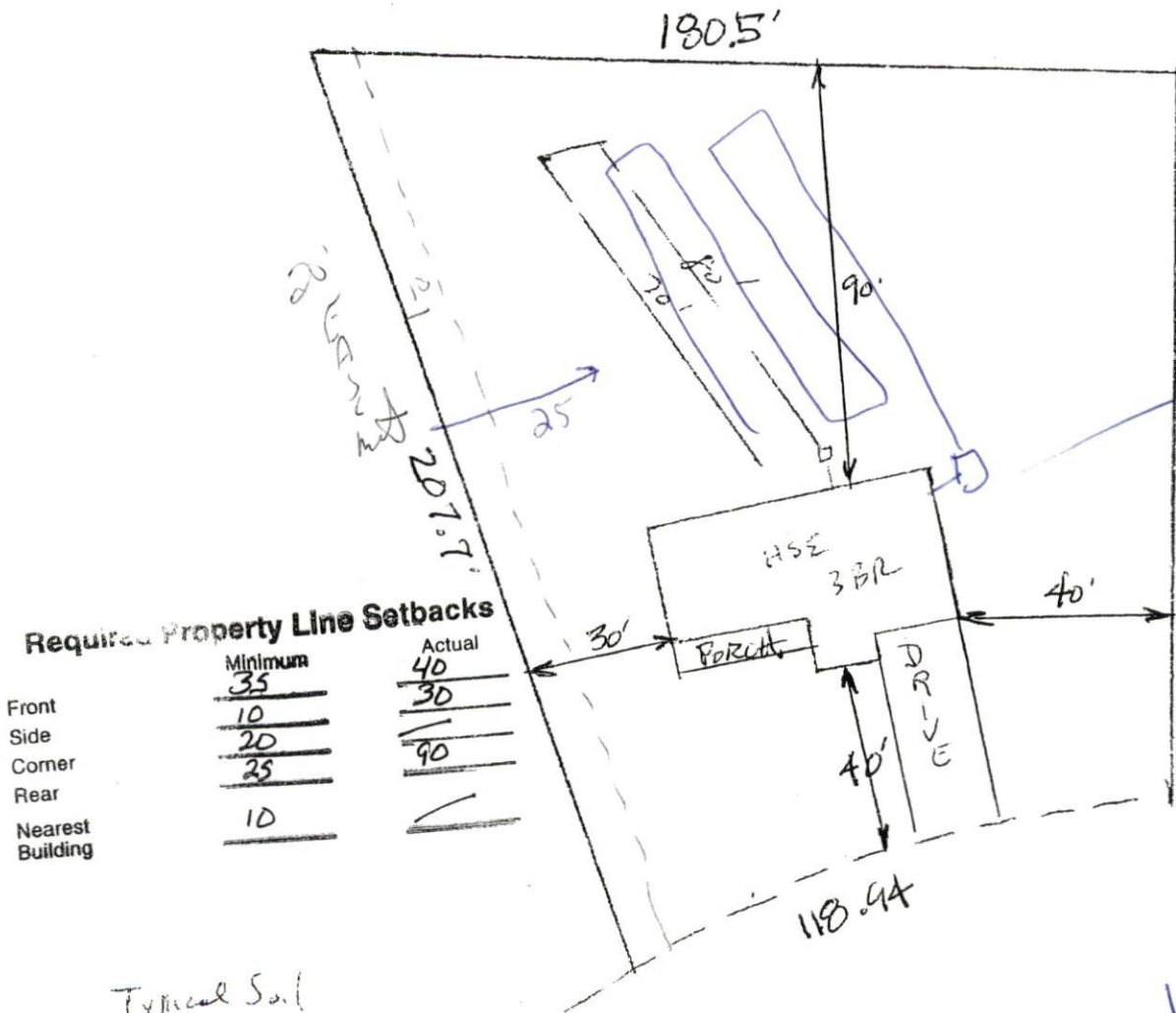
## SITE PLAN APPROVAL

DISTRICT PA-TOR USE SFD

#BEDROOMS 3

Date 17 Dec 01 C Bell  
 Zoning Administrator

Crestview Lot  
 76



5 TAB  
 9' x 11' x 11'  
 9' x 11' x 11'  
 9' x 11' x 11'  
 9' x 11' x 11'

Typical Soil  
 0-48 US/L  
 CR 2 248"  
 LTAH 0.83 g/ft<sup>2</sup>  
 1 X 150' CONVENTIONAL

18.24  
 1 X 200  
 1" = 40'