

SIT SOIL EVALUATION FOR OIL WASTE WASTEWATER

APPLICANT NAME _____

DATE _____

FACTORS		PROFILES													
		1	2	3	4	5	6	7	8	9	10				
LANDSCAPE POSITION	.1940														
SLOPE (%)	.1940	5-7%	5-7%	5-7	5-7	5-7									
HORIZON 1 DEPTH		0-38"	0-38"	0-30"	0-36"	0-24"									
Texture Group	.1941(A)(1)	S	S	S	S	S									
Consistence	.1941	VFR	VFR												
Structure	.1941(A)(2)	SG	SG												
Mineralogy	.1941(A)(3)	NS/NP	NS/NP												
HORIZON 2 DEPTH															
Texture Group	.1941(A)(1)														
Consistence	.1941														
Structure	.1941(A)(2)														
Mineralogy	.1941(A)(3)														
HORIZON 3 DEPTH															
Texture Group	.1941(A)(1)														
Consistence	.1941														
Structure	.1941(A)(2)														
Mineralogy	.1941(A)(3)														
HORIZON 4 DEPTH															
Texture Group	.1941(A)(1)														
Consistence	.1941														
Structure	.1941(A)(2)														
Mineralogy	.1941(A)(3)														
SOIL WETNESS	.1942														
RESTRICTIVE HORIZON	.1944														
SAPROLITE	.1943/.1956														
CLASSIFICATION	.1948	PS	PS	PS	PS	PS									
LONG TERM ACCEPTANCE RATE	.1955	1	1	1	1	1									

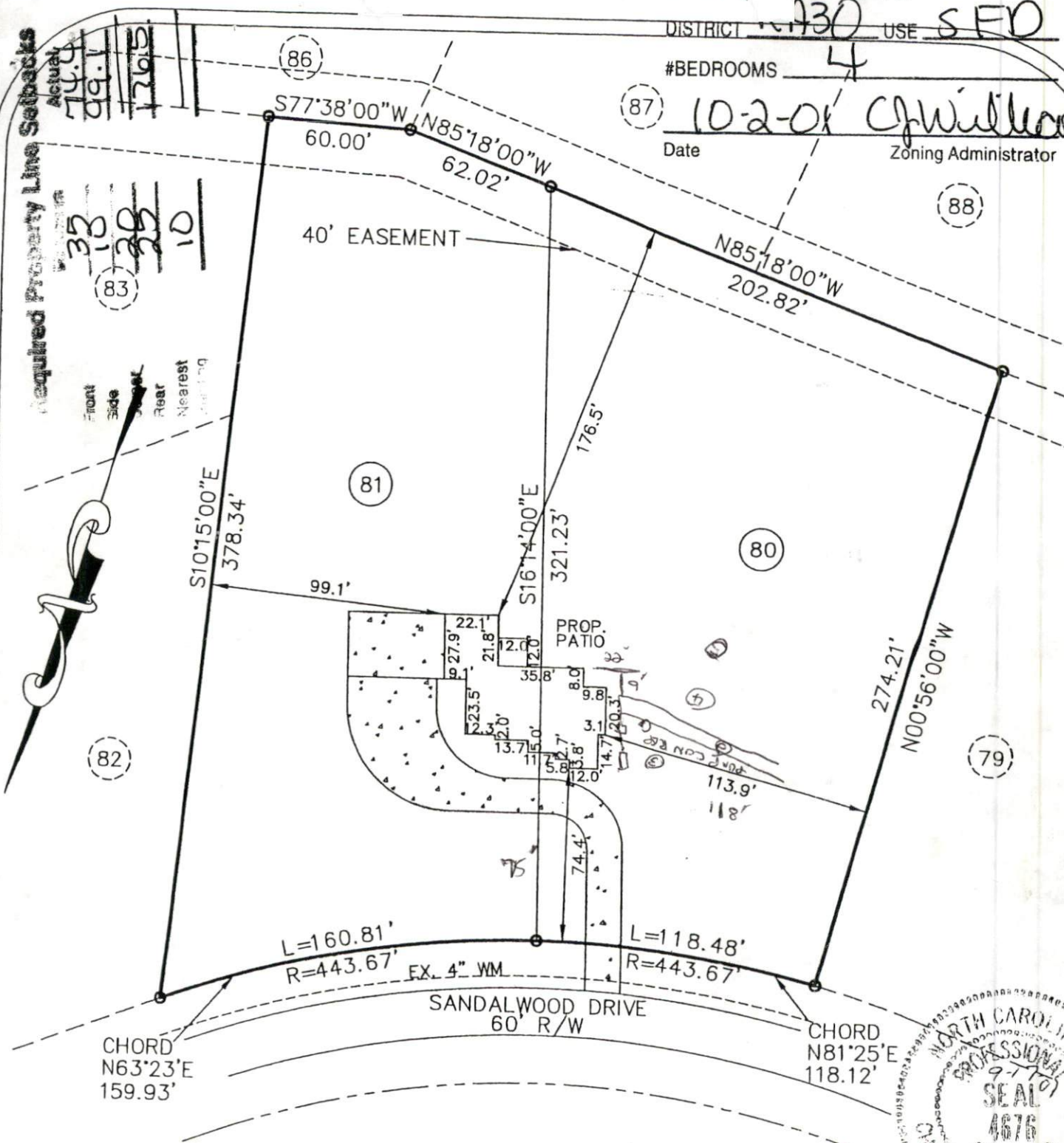
P_{me} 38" P_{me} 38" P_{me} 30" P_{me} 36" P_{me} 24"

2 80' LINES
 24" ON CONT

SITE PL APPROVAL
 DISTRICT 130 USE SFD
 #BEDROOMS 4

Date 10-2-01 C. Williams
 Zoning Administrator

Acquired Property Line Subbacks
 74.4
 99.1
 176.5
 35
 13
 38
 10
 83



CHORD
 N63°23'E
 159.93'

CHORD
 N81°25'E
 118.12'

DESIGN FOR PROPOSED
 SEWAGE DISPOSAL SYSTEM
 _____ APPROVED

SANITARIAN SUPERVISOR
 HARNETT CO. HEALTH DEPT.
 DATE _____

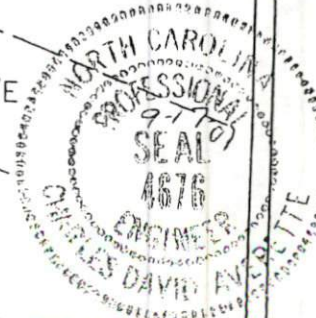
ROLLING SPRINGS
 SECTION SIX
 MAP NUMBER
 W.S. WELLONS CORP.
PLOT PLAN

SCALE: 1" = 60'

Averette Engineering Co., P.A.

1717 SWANN STREET
 FAYETTEVILLE, NORTH CAROLINA 28303
 PHONE (910) 488-5656/FAX (910) 488-0181

ELEV. & UTILITIES VERIFIED
Charles D. Averette
 CHARLES D. AVERETTE
 PROFESSIONAL ENGINEER
 DATE SEPTEMBER 17, 2001



PPLAN78 C