


SITE SOIL EVALUATION FOR ON-SITE WASTEWATER

APPLICANT NAME _____

DATE _____

| FACTORS | | PROFILES | | | | | | | | | | | | |
|---------------------------|-------------|----------|-------|------|---|---|---|---|---|---|----|--|--|--|
| | | 1 | 2 | 3 | 4 | 5 | 6 | 7 | 8 | 9 | 10 | | | |
| LANDSCAPE POSITION | .1940 | | | | | | | | | | | | | |
| SLOPE (%) | .1940 | | | | | | | | | | | | | |
| HORIZON 1 DEPTH | | 0-10 | 0-12 | 0-6 | | | | | | | | | | |
| Texture Group | .1941(A)(1) | SL | SL | SL | | | | | | | | | | |
| Consistence | .1941 | JK | JK | JK | | | | | | | | | | |
| Structure | .1941(A)(2) | G | G | G | | | | | | | | | | |
| Mineralogy | .1941(A)(3) | NEV | NEV | NEV | | | | | | | | | | |
| HORIZON 2 DEPTH | | 10-32 | 12-32 | 6-32 | | | | | | | | | | |
| Texture Group | .1941(A)(1) | C | C | C | | | | | | | | | | |
| Consistence | .1941 | K: | K: | K: | | | | | | | | | | |
| Structure | .1941(A)(2) | SBR | SBR | SBR | | | | | | | | | | |
| Mineralogy | .1941(A)(3) | SOE | SOE | SOE | | | | | | | | | | |
| HORIZON 3 DEPTH | | | | | | | | | | | | | | |
| Texture Group | .1941(A)(1) | | | | | | | | | | | | | |
| Consistence | .1941 | | | | | | | | | | | | | |
| Structure | .1941(A)(2) | | | | | | | | | | | | | |
| Mineralogy | .1941(A)(3) | | | | | | | | | | | | | |
| HORIZON 4 DEPTH | | | | | | | | | | | | | | |
| Texture Group | .1941(A)(1) | | | | | | | | | | | | | |
| Consistence | .1941 | | | | | | | | | | | | | |
| Structure | .1941(A)(2) | | | | | | | | | | | | | |
| Mineralogy | .1941(A)(3) | | | | | | | | | | | | | |
| SOIL WETNESS | .1942 | | | | | | | | | | | | | |
| RESTRICTIVE HORIZON | .1944 | | | | | | | | | | | | | |
| SAPROLITE | .1943/.1956 | | | | | | | | | | | | | |
| CLASSIFICATION | .1948 | PS | PS | PS | | | | | | | | | | |
| LONG TERM ACCEPTANCE RATE | .1955 | .3 | .7 | .3 | | | | | | | | | | |


 ©
 ① ②

OLD STAGE
ROAD NORTH
SR 1006

(24.07A)
3052

(6.67A)
0549

(4.32A)
6407

18

(4.36A)
3456

28

(2.64A)
3200

WINDS DR

6125
6826

(10.59A)
6676

(45.44A)
7291

(53.42A)
7681

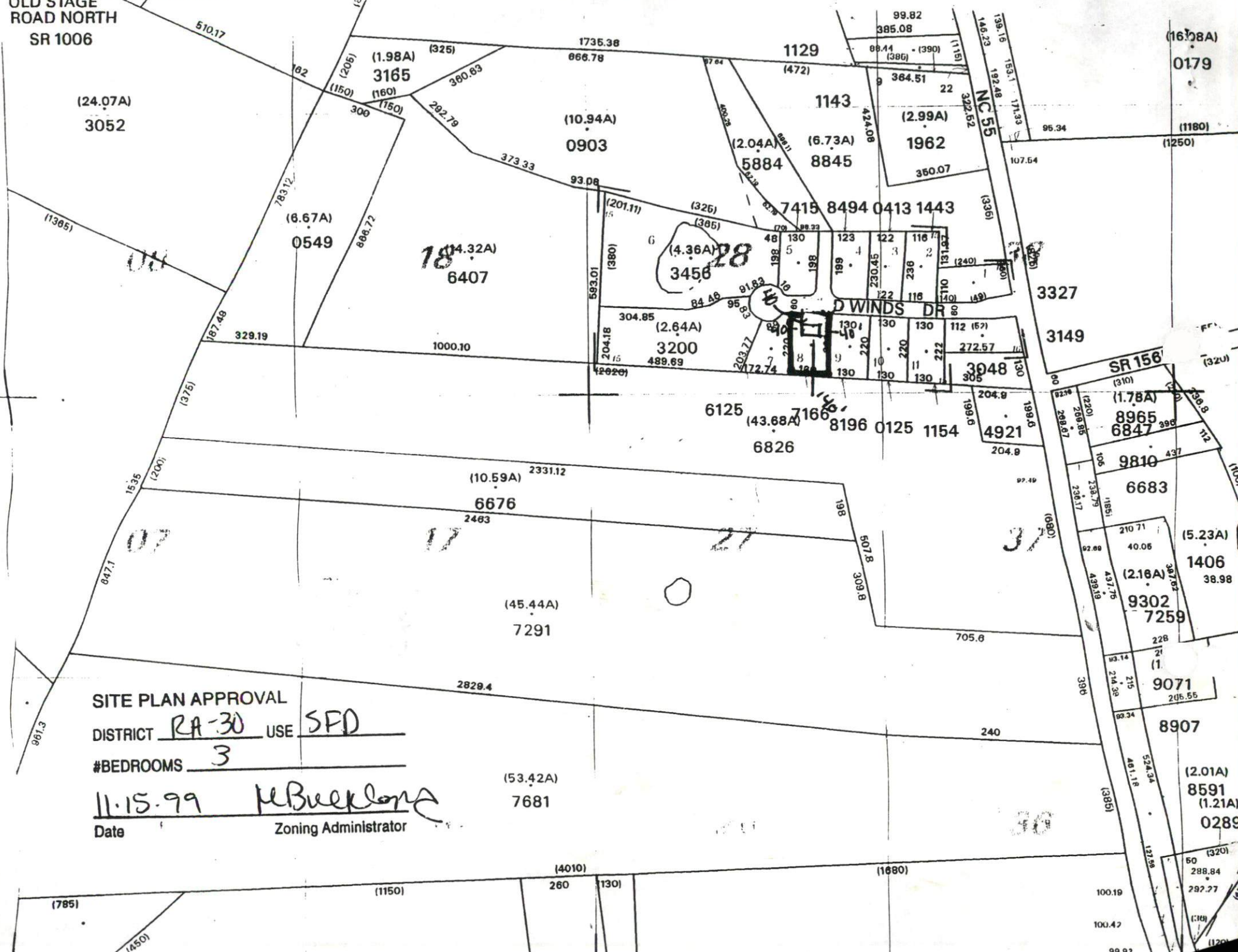
SITE PLAN APPROVAL

DISTRICT RA-30 USE SFD

#BEDROOMS 3

Date 11.15.99 M. Buckner

Zoning Administrator



(16.28A)
0179

(1180)
(1250)

3327

3149

SR 156

(1.78A)
8965
6847

9810
6683

(5.23A)
1406
38.98

(2.18A)
9302
7259

(1)
9071
205.55

8907

(2.01A)
8591
(1.21A)
0289

(785)

(1150)

(4010)

260

1301

(1680)

100.19

100.42

99.92

5x60
18.20
E219
non-carbon

