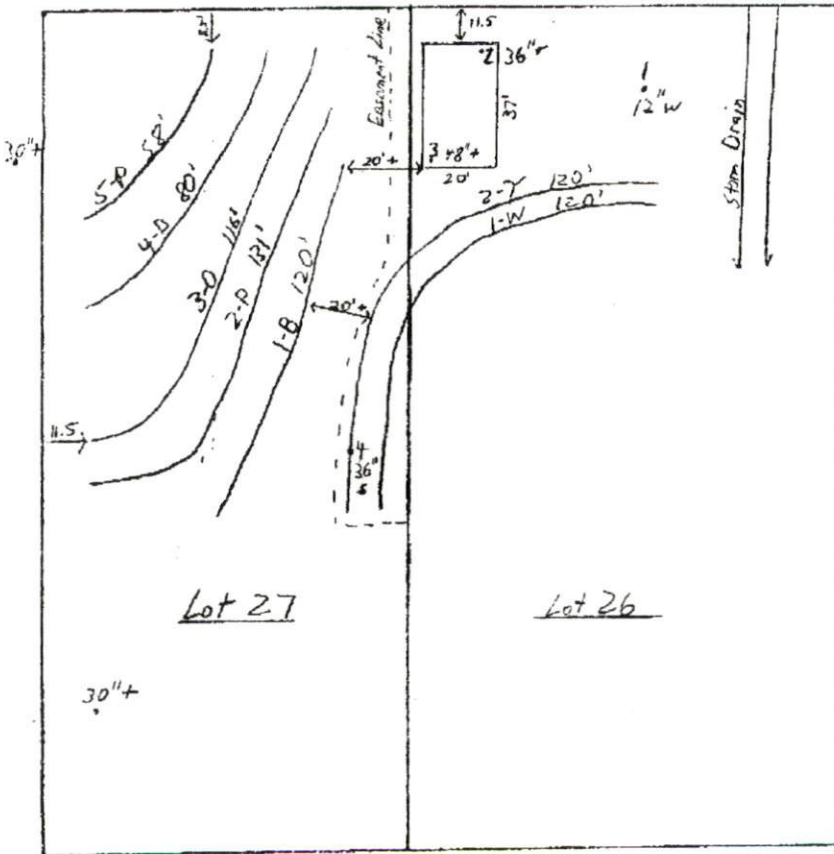


### Site Evaluation for On-Site Sewage Treatment & Disposal Lot 26 & 27, Woodview October 19, 2001 by Chandler Soil Consultants, Inc.

Scale 1" = 40'  
 Layout shot on 9' centers: P = pink metal stakes, W = white, B = blue; O = orange  
 Puraflo bed marked with white stakes. Proposed easement line marked with red and white stripped stakes.  
 Boring locations marked with depth to unsuitable characteristic noted in inches:  
     w = soil wetness  
     s = saprolite  
 Borings marked on-site using the following color scheme  
     Red stakes and flagging = adequate depth for conventional or shallow conv. system.  
     Orange & Blue = adequate depth for subsurface pretreatment.  
 Note: 30"± borings estimated from original soil map.

**Proposal for Lot 26:** Initial: pump to shallow conventional with a cap. Trench bottom placement 12-14 inches. LTAR: 0.375. Repair: Type A Puraflo Peat Biofilter, reducing trench bottom area 25% from 45 LTAR (800ft<sup>2</sup> x .75 = 600ft<sup>2</sup>). Each module will accommodate 15' x 10' gravel bed. Gravel bed can be placed 8-15" deep.

**Proposal for Lot 27:** Initial & Repair: 3-bedroom shallow EZ-Flow. Recommended LTAR: 0.375. Recommended trench bottom placement: 18-24 inches. Total line length needed, 3-bedroom initial and repair = 480'. Line length available = 505'.



Blow-up of Puraflo bed area.

