

**NOTES**

- FIELD PIPE DROPS AS SHOWN
- SLEEVING, ELBOWS, TEES, AND NOZZLES SUPPLIED BY GAS
- RELOCATE NOZZLES IF FLOW PATTERN IS BLOCKED BY SHELVING, SALAMANDERS, ETC.
- MAXIMUM 9 ELBOWS IN SUPPLY LINE.
- MINIMUM 72 INCHES OF AGENT LINE FROM TANK TO FIRST NOZZLE.
- IF APPLICABLE, PRE-PIPED CHARBROILER DROPS ARE SHIPPED LOOSE.
- FACTORY PIPING EXTENDS A MAXIMUM OF 6\"/>

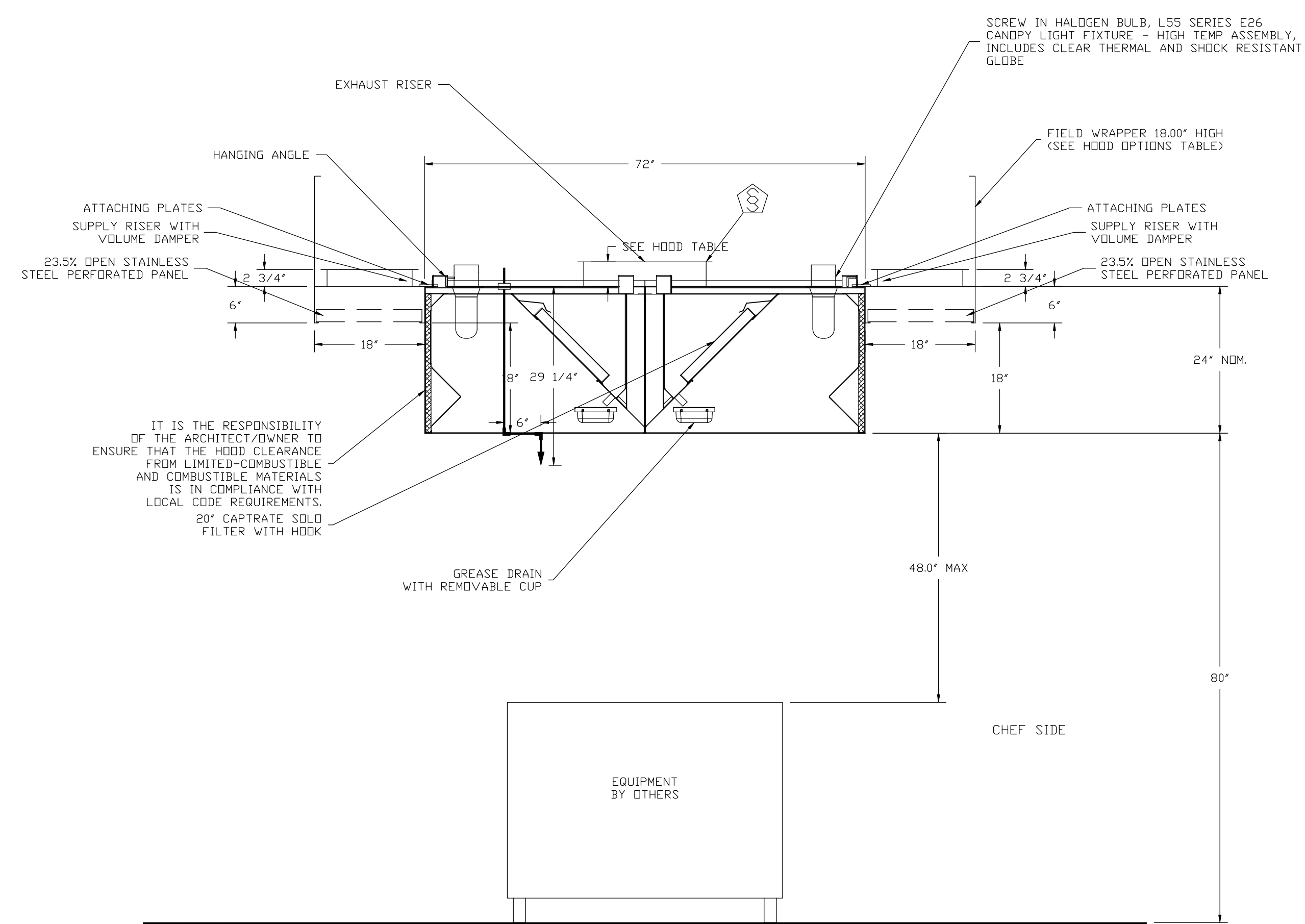
- APPLIANCE DIMENSIONS LISTED REPRESENT THE COOKING SURFACE SIZE, NOT THE OVERALL APPLIANCE SIZE.

- THIS FIRE SYSTEM COMPLIES WITH U.L. 300 REQUIREMENTS

Job #: 3120610  
 Job Name: Campbell University\_R6-FC  
 Drawn By:  
 System Size: ANSUL-3.0/3.0 Total FP required: 12  
 Hood # 1 11' 0.00\"/>

**LEGEND - WALL MOUNTED ANSUL SYSTEM**

- 1A 15 GALLON TANK
- 1B 30 GALLON TANK
- 2 AUTOMAN RELEASE
- 3 3 GALLON TANK ENCLOSURE
- 3A 6 GALLON TANK ENCLOSURE
- 4 REGULATED ACTUATOR
- 5 ANSULEX LIQUID AGENT (3 GAL.)
- 6 ANSULEX LIQUID AGENT (1.5 GAL.)
- 7 CARTRIDGE (101-20)
- 8 CARTRIDGE (101-10)
- 9 CARTRIDGE (101-30)
- 9A CARTRIDGE (LT-A-101-30)
- 9B DOUBLE TANK CARTRIDGE
- 10 TEST LINK
- 11 DOUBLE MICROSWITCH
- 2W DUCT NOZZLE (419337)
- 1W NOZZLE ASSEMBLY (419336)
- 1F NOZZLE ASSEMBLY (419333)
- 1N NOZZLE ASSEMBLY (419335)
- 1/2N NOZZLE ASSEMBLY (419334)
- 3N NOZZLE ASSEMBLY (419338)
- 245 NOZZLE ASSEMBLY (419340)
- 230 NOZZLE ASSEMBLY (419339)
- 2120 NOZZLE ASSEMBLY (419343)
- 290 NOZZLE ASSEMBLY (419342)
- 260 NOZZLE ASSEMBLY (419341)
- 28 DETECTOR BRACKET
- 29 LOW TEMP FUSIBLE LINK
- 30 HIGH TEMP FUSIBLE LINK
- MGV MECHANICAL GAS VALVE
- EGV ELECTRICAL GAS VALVE
- 34 REMOTE MANUAL PULL STATION
- S SWIVEL ADAPTOR



SECTION VIEW - MODEL 7224NDI-PSP-FB  
 HOOD - #1

DUCT NOZZLE AND  
 PLENUM SPRAY BAR LOCATION

**REVISIONS**

DESCRIPTION	DATE

www.captivefire.com  
 Pittsburgh Foodservice  
 507 Duncan Ct, Cranberry Township, PA, 15066 PHONE: (724) 776-7501 FAX: (724) 776-7522 EMAIL: reg83@captivefire.com

Campbell University\_R6-FC  
 450 Leslie Campbell Ave,  
 BUJES CREEK, NC, 27506

**DATE:** 6/29/2018  
**DWG.#:** 3120610  
**DRAWN BY:** Reg83-BAS  
**SCALE:** 3/4" = 1'-0"  
**MASTER DRAWING**

# CORE TOTAL FLOOD PROTECTION PLUMBING DETAIL

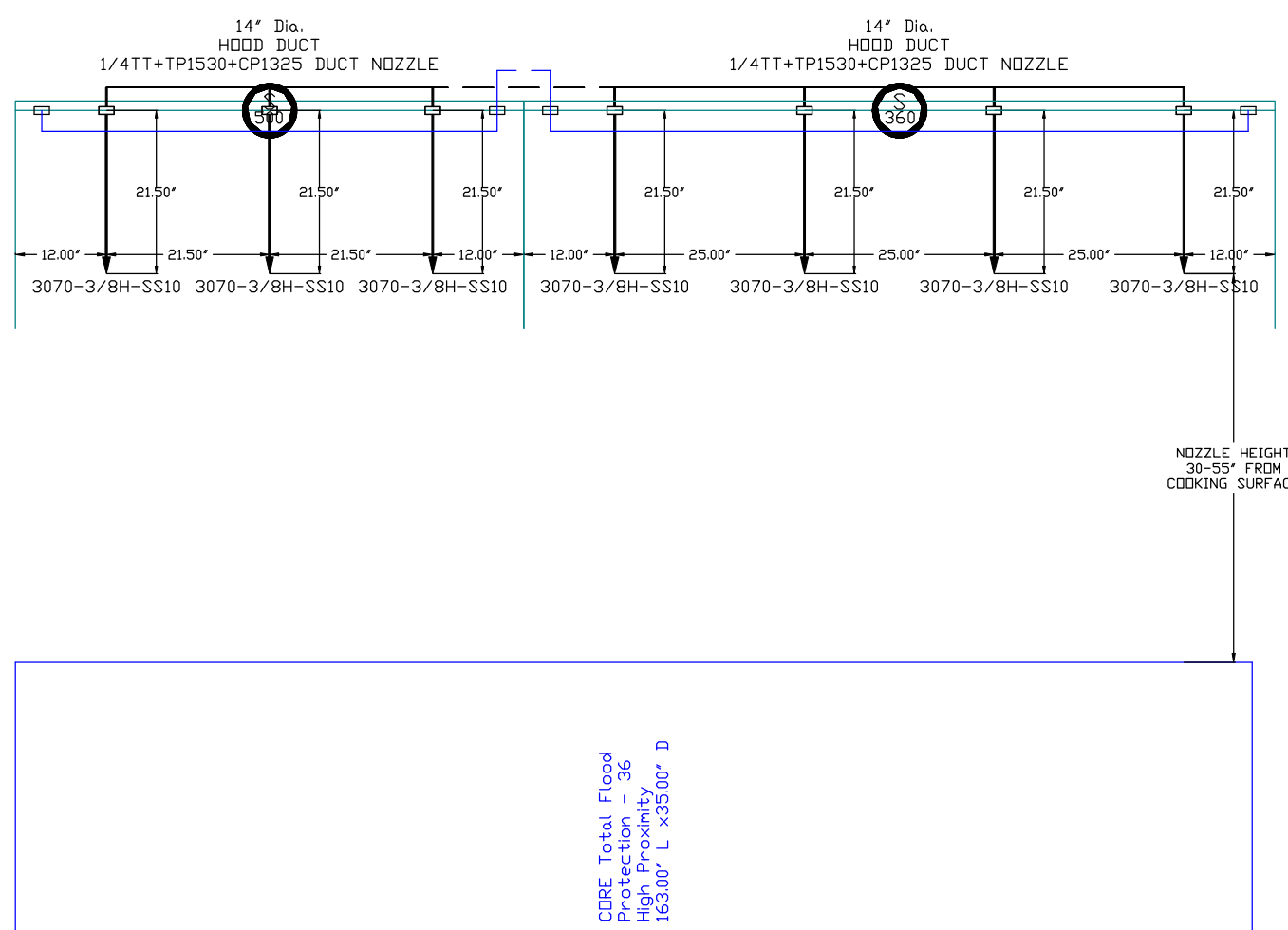
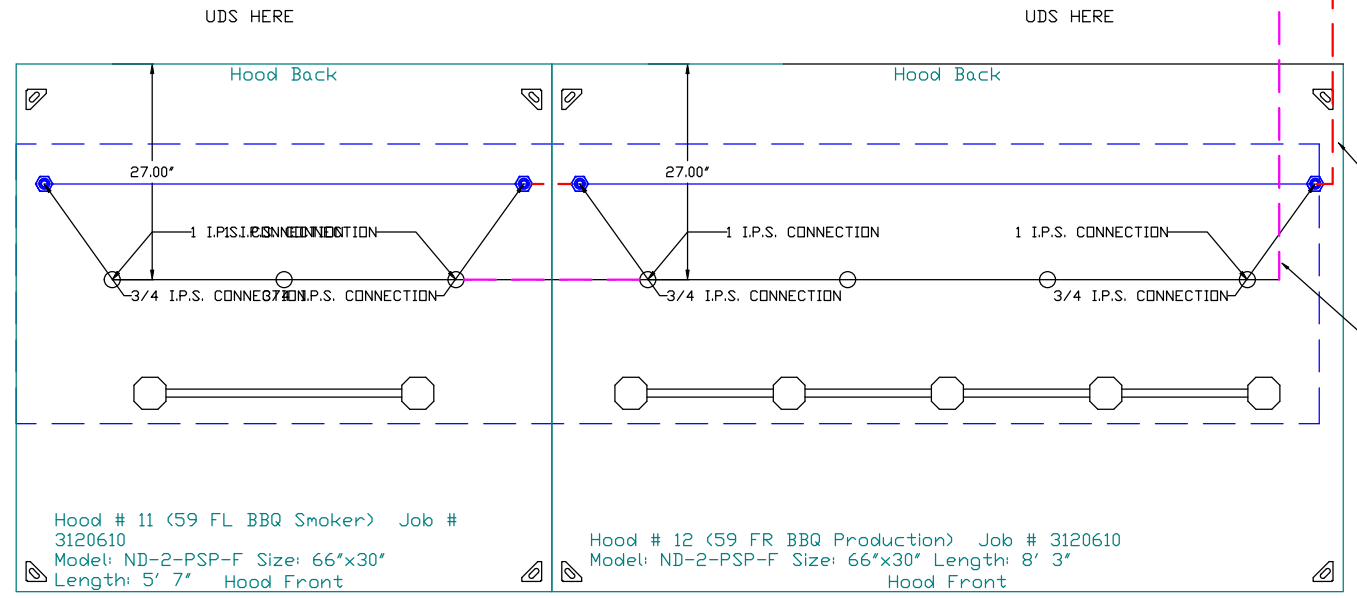
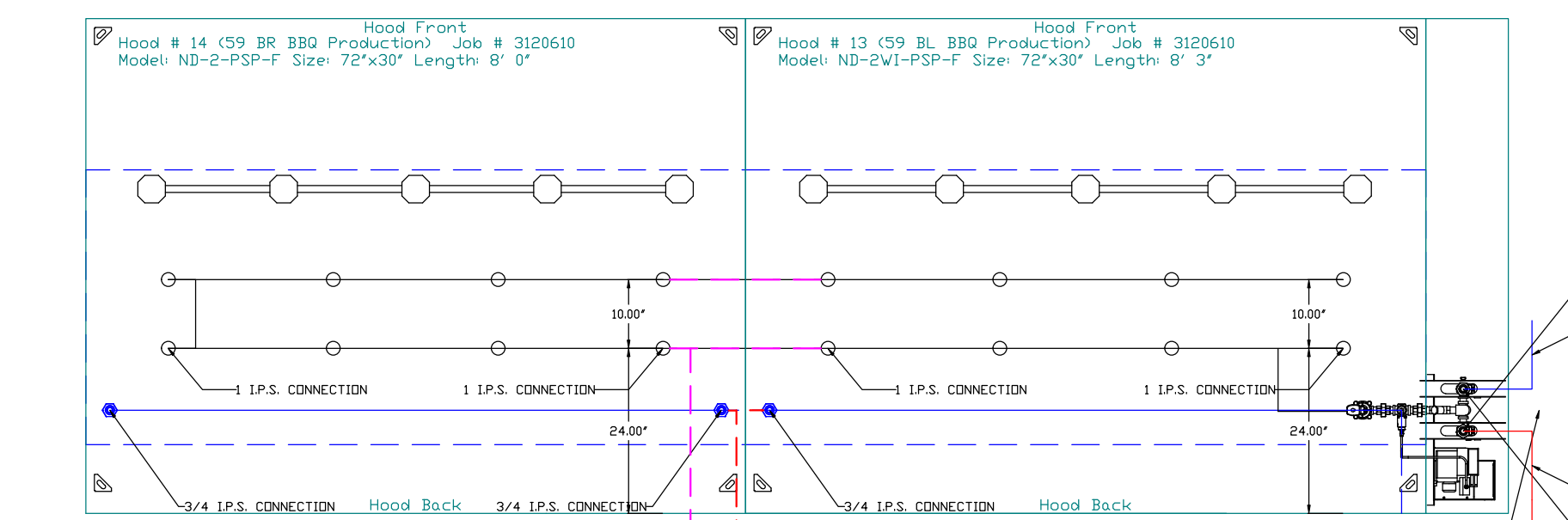
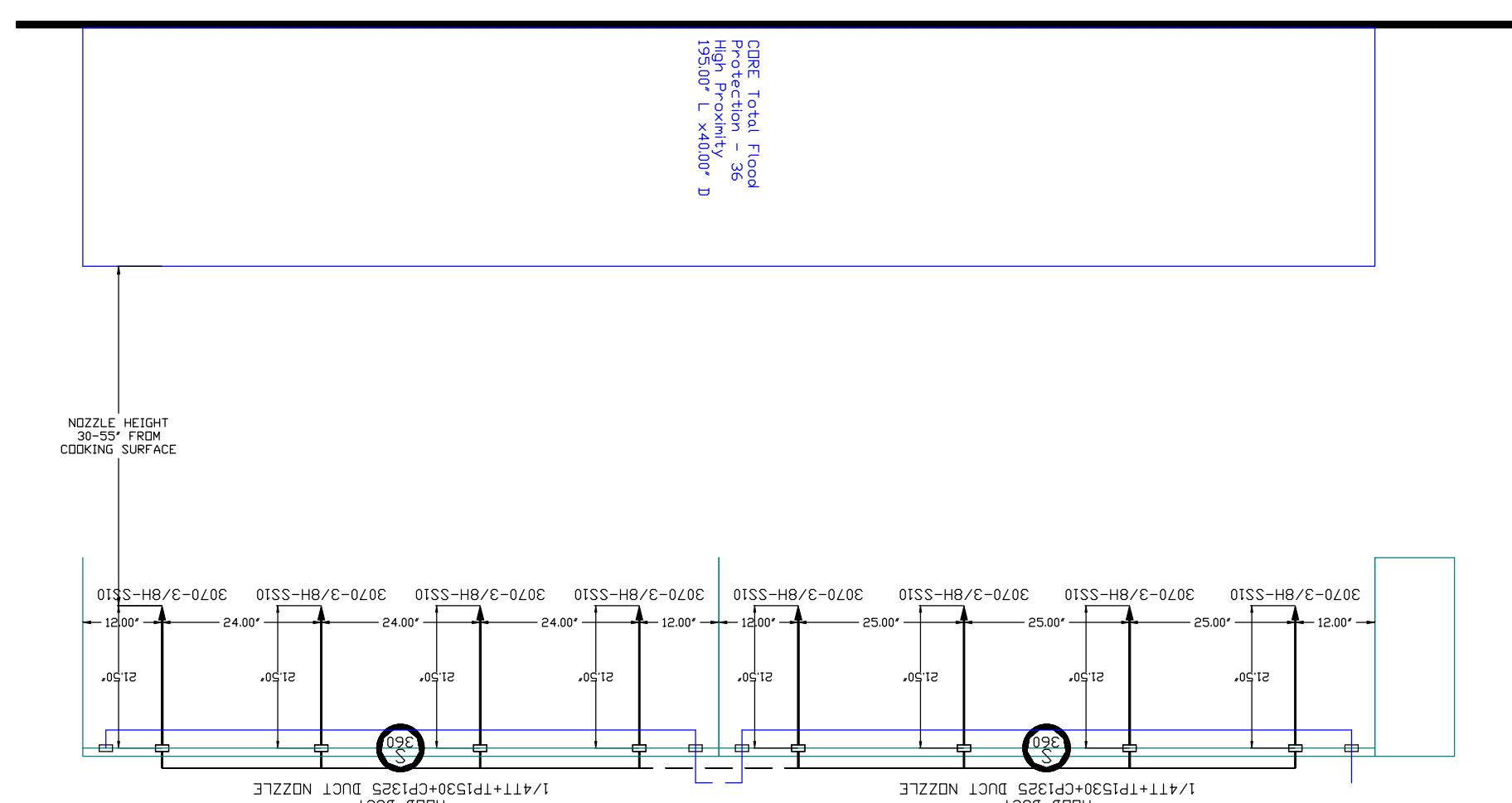
ITEM	CONNECTION	TEMPERATURE	PLUMBING CONTRACTOR REQUIREMENT		COMMENTS
			PRESSURE	FLOW RATE	
HOT WATER LINE	2 INCH NPT	140 to 170°F	34 PSI TO 70 PSI	21.06 GPM	INSULATE HOT WATER PIPE, MINIMUM PRESSURE DEPENDENT ON LENGTH AND CONFIGURATION OF HOOD SYSTEM
HOOD DRAINS	1-1/2 INCH NPT	N/A	GRAVITY DRAIN	SEE ABOVE	2 DRAINS ON 24 INCH TALL HOODS WITH 20 INCH TALL FILTERS AND HOODS 10 FEET AND LONGER
END-TO-END CORE CONNECTION	VARIABLES	N/A	N/A	N/A	CONNECT WITH NPT PIPE, SEAL ALL THREADS, HOOD CONNECTION PROVIDED
BACK-TO-BACK CORE CONNECTION	VARIABLES	N/A	N/A	N/A	CONNECT WITH NPT PIPE, SEAL ALL THREADS, HOOD CONNECTION PROVIDED
GAS VALVE	VARIABLES	N/A	SEE TABLE	N/A	UP TO 2 INCHES NPT WITH 24V CONTROLS, 2-1/2" AND 3 INCH USE 120V CONTROL
FLOOR DRAINS	1-1/2 INCH	N/A	GRAVITY DRAIN	N/A	USED TO HELP CLEAN UP FIRE SYSTEM DISCHARGE, GREASE INTERCEPTOR MAY BE REQUIRED
BACKFLOW PREVENTER DRAIN LINE (OPTIONAL)	INLET/OUTLET DRAIN	N/A	VARIABLES	N/A	INSTALLED WHEN PACKAGE HAS A BACKFLOW PREVENTER VALVE, SEE BACKFLOW PREVENTER VALVE MANUAL FOR DETAILS

Item	Flow Rate (GPM)	Pressure Drop (PSI)
Field Piping (Between All Hood Crosses)	2	53.0
Hood Internal Piping	0.75	53.0
<b>Total</b>	<b>2.75</b>	<b>53.0</b>

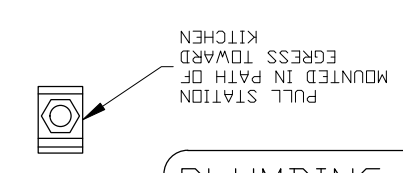
Item	Flow Rate (GPM)	Pressure Drop (PSI)
Field Piping (Between All Hood Crosses)	2	21.0
Hood Internal Piping	0.75	21.0
Backflow Preventer	2"	15
<b>Total</b>	<b>3.45</b>	<b>47.0</b>

Requirement	Flow Rate (GPM)	Pressure Drop (PSI)
Total Core Inlet Requirements	53.0	488
Total Self-Cleaning Inlet Requirements	21.0	47

- Backflow pressure range at CORE Panel Gauge is 488 to 70 PSI. Minimum Static Pressure is 35 PSI
- Backflow pressure range at Backflow Preventer is 49 to 70 PSI. Minimum Static Pressure is 35 PSI
- Hot Water Temperature Range for Self-Cleaning 140-170°F



FACTORY PIPING:	—————
FIELD PIPING:	- - - - -



**PLUMBING CONTRACTOR SIGNOFF:**

FIELD RESIDUAL PRESSURE: \_\_\_ PSI  
 FIELD STATIC PRESSURE: \_\_\_ PSI  
 GREASE INTERCEPTOR CAPACITY: \_\_\_ GPM

WATER SUPPLY REQUIREMENTS HAVE BEEN CONFIRMED

SIGNATURE: \_\_\_\_\_ Date: \_\_\_\_\_  
 Your Title: \_\_\_\_\_

- PLUMBING TRADE RESPONSIBILITIES**
1. CONNECT HOT WATER LINE TO CORE PANEL.
  2. CONNECT HOOD DRAINS TO GREASE INTERCEPTOR. SEE DRAWING DETAILS FOR CONNECTION SIZES AND FLOW RATES.
  3. INSTALL FLOOR DRAINS.
  4. INSTALL GAS VALVE (PROVIDED BY CAPTIVEAIRE).
  5. INSTALL BACKFLOW PREVENTER (IF REQUIRED). REFER TO MANUAL FOR DRAIN REQUIREMENTS.
  6. CONNECT ALL END TO END AND BACK TO BACK WATER LINE CONNECTIONS-SEE MANUAL FOR INSTRUCTIONS.

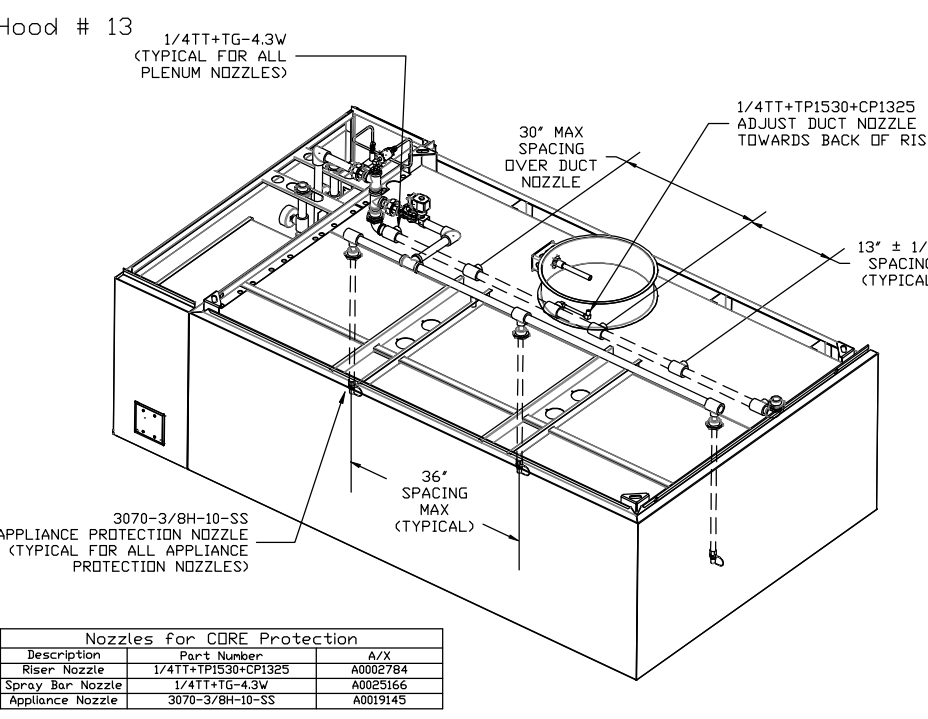
**DRAIN PIPING (BY PLUMBER)**

NOTE TO PLUMBER: IF HOOD DRAINS ARE TO BE COMBINED TOGETHER, VERIFY PROPER MANIFOLD SIZE (SEE CHART)

**GREASE INTERCEPTOR CALC**

HOODS DRAIN TO GREASE INTERCEPTOR. SIZE GREASE INTERCEPTOR FOR 21.0 GPM

- NOTES**
- FIELD PIPE DROPS AS SHOWN
  - ELBOWS, TEES, AND NOZZLES SUPPLIED BY CAS
  - RELocate NOZZLES IF FLOW PATTERN IS BLOCKED BY SHELVEING, SALAMANDERS, ETC.
  - FACTORY PIPING EXTENDS A MAXIMUM OF 6' ABOVE THE TOP OF THE HOOD.
  - APPLIANCE DIMENSIONS LISTED REPRESENT THE COOKING SURFACE SIZE, NOT THE OVERALL APPLIANCE SIZE.
  - THIS FIRE SYSTEM COMPLIES WITH UL 300 REQUIREMENTS
  - CORE / Self-Cleaning (United States) - US Patent 7963282 B2
  - CORE / Self-Cleaning (Europe) - EP Patent 2274069 A1
  - CORE Supervision - US Patent 6378834 B1
  - CORE Electrical - US Patent 6610601 B2
  - Job # 3120610
  - Job Name: Campbell University\_R6-F6
  - Drawn By: \_\_\_\_\_
  - System Size: CORE
  - Hood # 11 5' 7.00' Long x 66' Wide x 30' High
  - Riser # 1 Size: 14' Dia
  - Hood # 12 Metal Blow-Off Caps included.
  - Hood # 8' 3.00' Long x 66' Wide x 20' High
  - Riser # 1 Size: 14' Dia
  - Hood # 12 Metal Blow-Off Caps included.
  - Hood # 13 8' 3.00' Long x 72' Wide x 30' High
  - Riser # 1 Size: 16' Dia
  - Hood # 13 Metal Blow-Off Caps included.
  - Hood # 14 8' 0.00' Long x 72' Wide x 30' High
  - Riser # 1 Size: 16' Dia
  - Hood # 14 Metal Blow-Off Caps included.



**ELECTRIC GAS VALVES ONLY**

3/4" THROUGH 2" VALVES CAN BE MOUNTED WITH THE SOLENOID IN ANY POSITION ABOVE HORIZONTAL

2-1/2" THROUGH 3" VALVES MUST BE MOUNTED WITH THE SOLENOID VERTICAL AND UPRIGHT

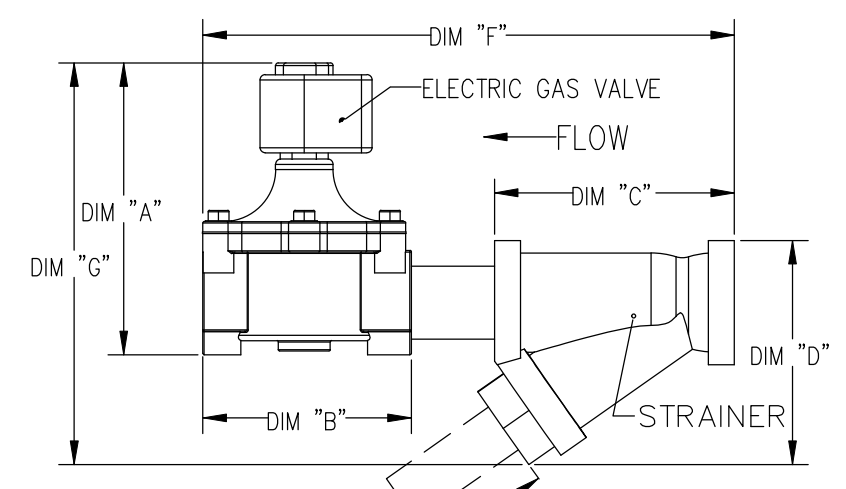
**ALL GAS VALVES/STRAINERS**

PROPER CLEARANCE MUST BE PROVIDED IN ORDER TO SERVICE THE STRAINERS A MINIMUM OF 4" CLEARANCE DISTANCE MUST BE PROVIDED AT THE BASE OF THE STRAINER CUSTOMER MUST VERIFY BTU CONSUMPTION AS WELL AS PRESSURE RATING SPECIFIC GRAVITY OF NATURAL GAS = 0.64, SPECIFIC GRAVITY OF LP = 1.52

**CALCULATIONS**

TO CALCULATE GAS FLOW FOR OTHER THAN 1 IN.W.C. PRESSURE DROP  
 NEW BTU/HR = (BTU/HR AT 1 IN.W.C. PRESSURE DROP) X NEW PRESSURE DROP<sup>0.85</sup>

TO CALCULATE GAS FLOW FOR OTHER THAN 0.64 SPECIFIC GRAVITY  
 NEW BTU/HR = (BTU/HR AT 0.64) X 0.64 / NEW SPECIFIC GRAVITY<sup>0.85</sup>

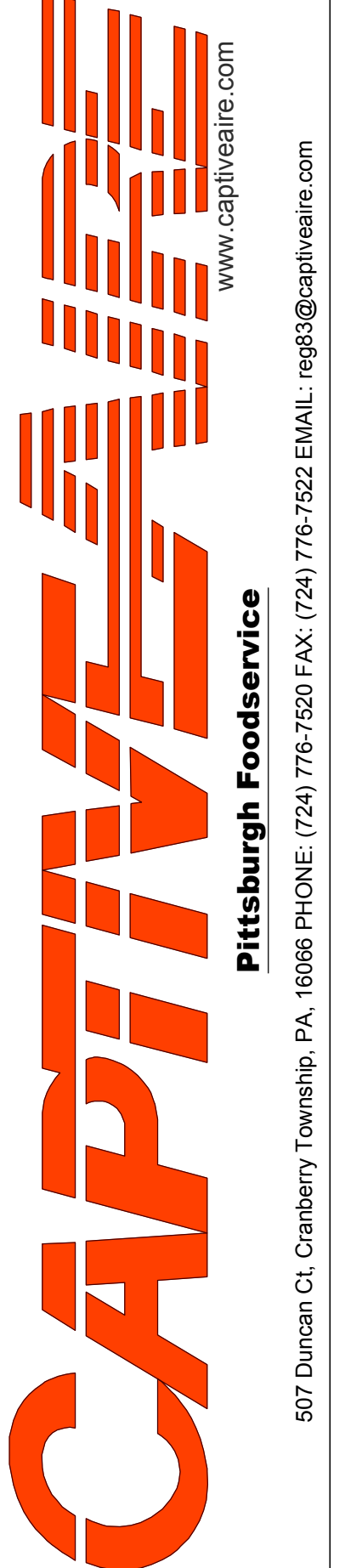


ISOMETRIC VIEWS ARE FOR GRAPHICAL REPRESENTATION OF TYPICAL NOZZLE PLACEMENTS AND TYPE, QUANTITIES OF NOZZLES WILL VARY.

# CORE INSTALLATION GREASE HOOD PLUMBING

NOTE - SEE INSTALLATION, OPERATION, AND MAINTENANCE MANUAL FOR FURTHER INSTRUCTIONS

DESCRIPTION	DATE

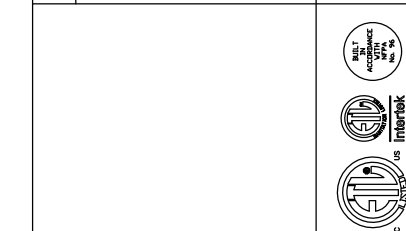


Campbell University\_R6-F6  
 450 Leslie Campbell Ave,  
 BUIES CREEK, NC, 27506

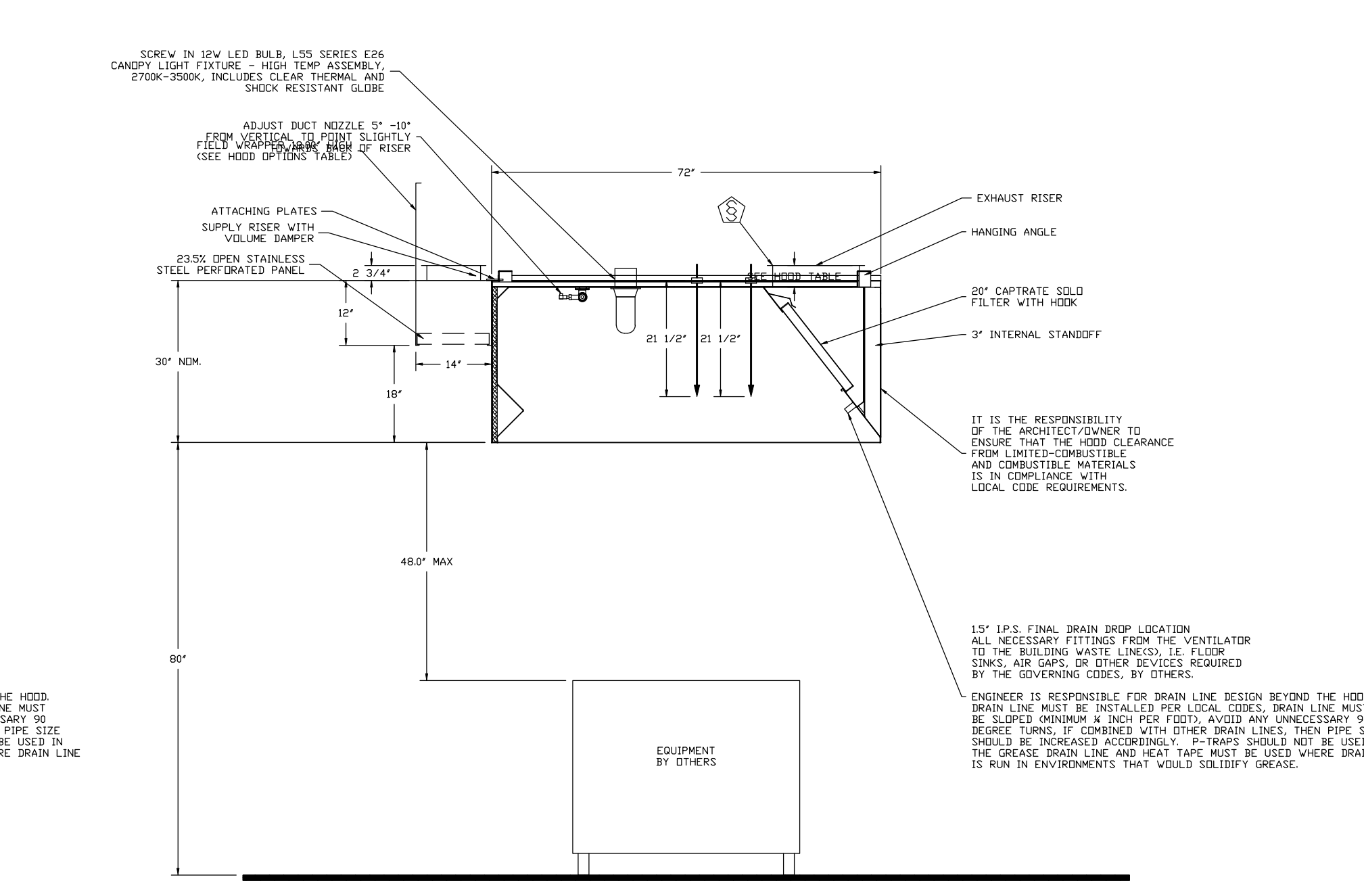
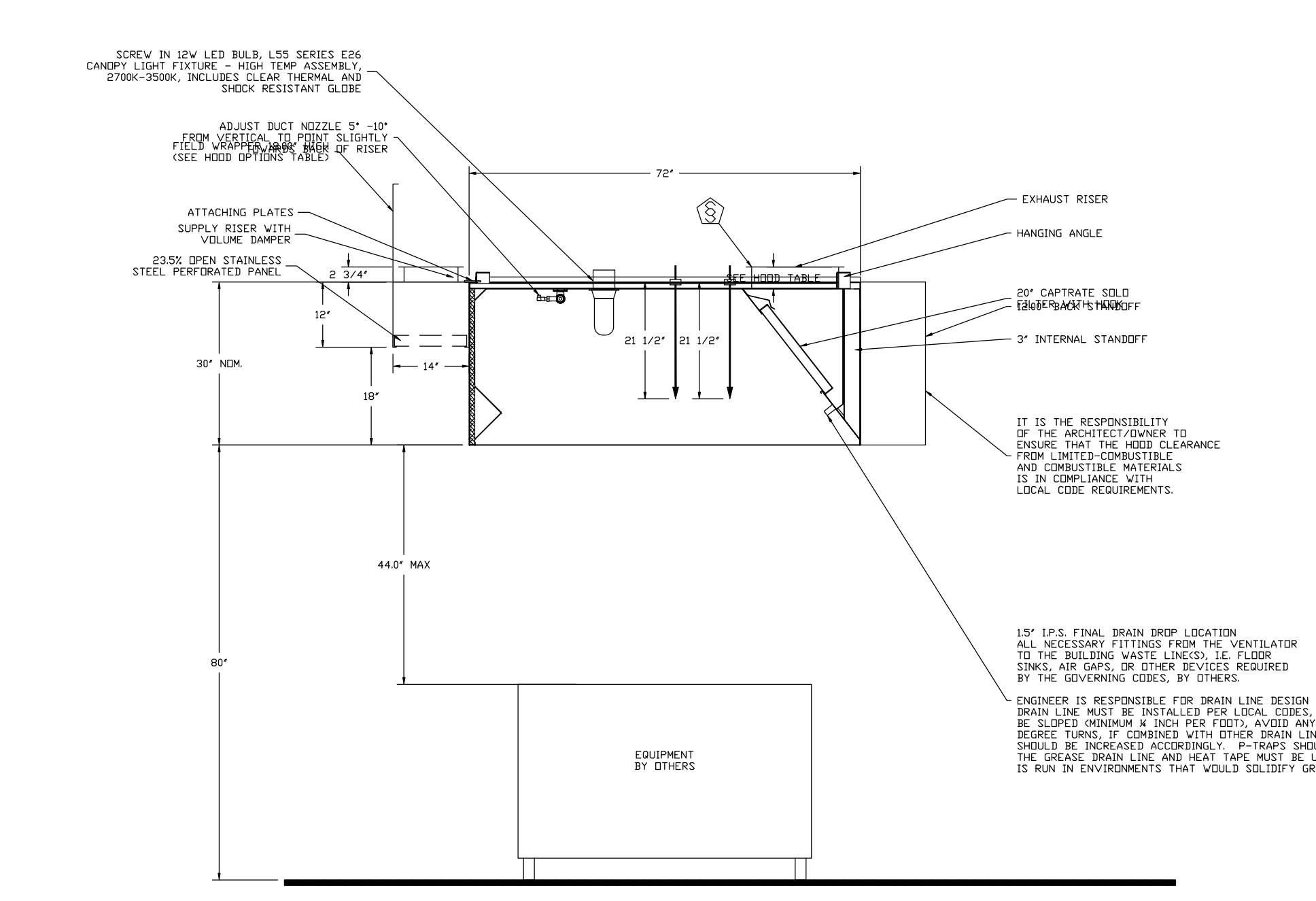
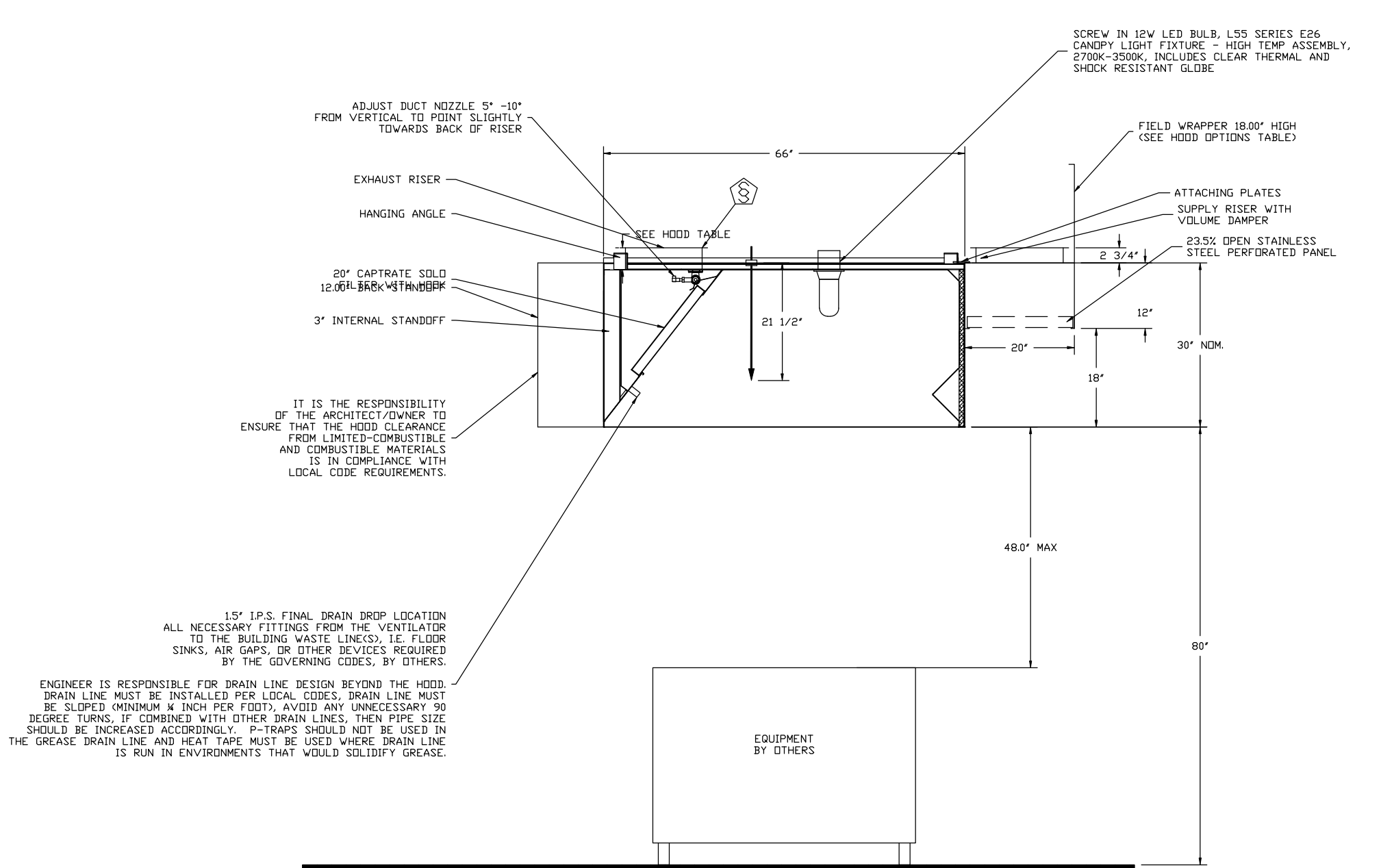
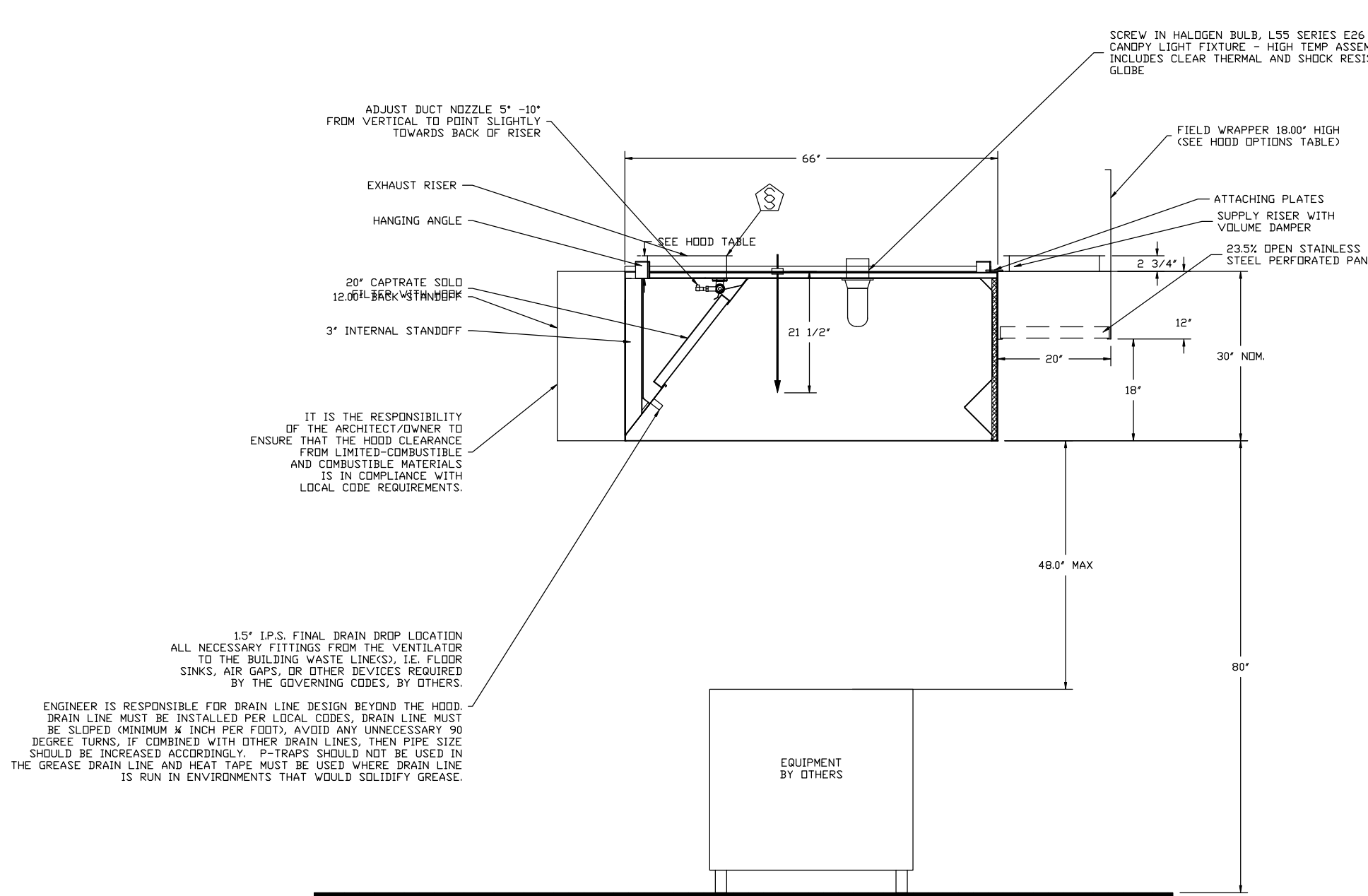
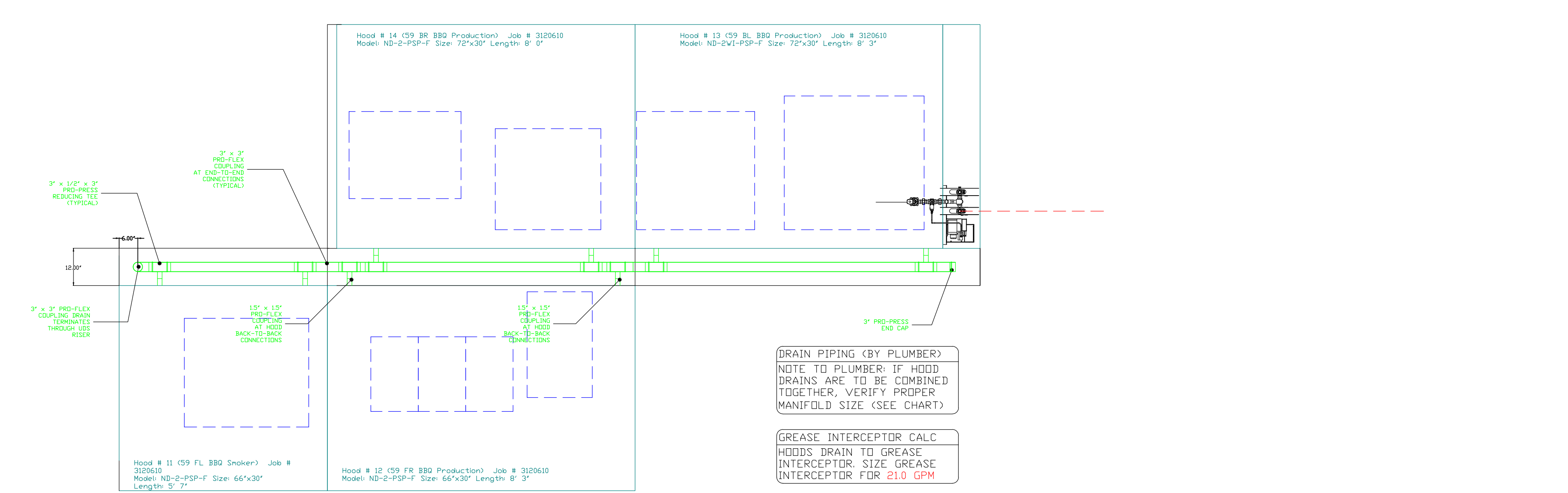
DATE: 6/29/2018  
 DWG.#: 3120610  
 DRAWN BY: Reg83-BAS  
 SCALE: 1/2" = 1'-0"  
 MASTER DRAWING

SHEET NO. 10

REVISIONS	DESCRIPTION	DATE
△		
△		
△		
△		



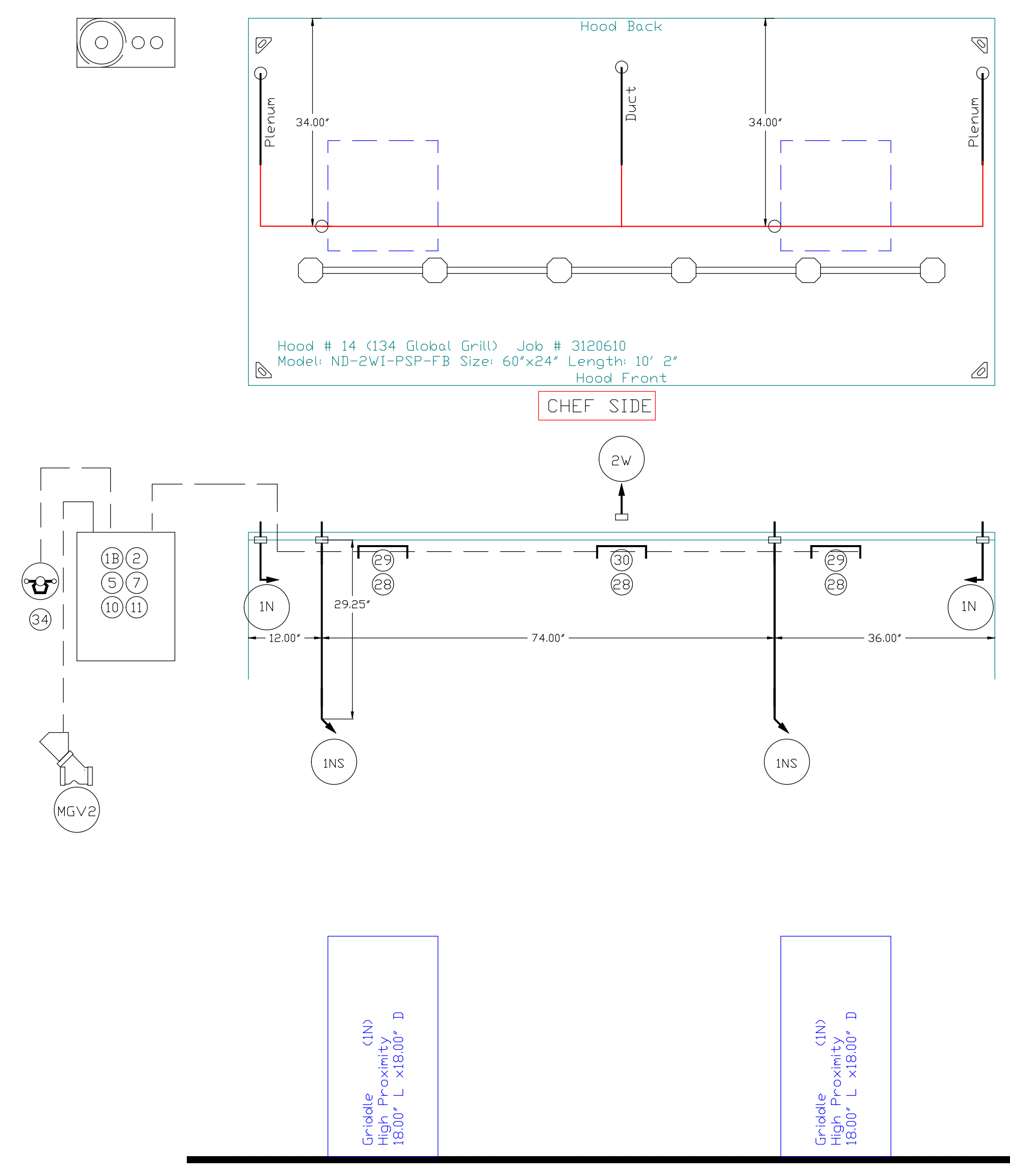
**CAPTIVE**  
Pittsburgh Foodservice  
www.captiveare.com  
501 Duncan Ct. Cranberry Township, PA, 15065 PHONE: (724) 776-7501 FAX: (724) 776-7522 EMAIL: reg83@captiveare.com



Campbell University\_R6-FC  
450 Leslie Campbell Ave,  
BUJES CREEK, NC, 27506

DATE: 6/29/2018  
DWG.#: 3120610  
DRAWN BY: Reg83-BAS  
SCALE: 1/2" = 1'-0"  
MASTER DRAWING

SHEET NO. 12



**NOTES**

- FIELD PIPE DROPS AS SHOWN
- SLEEVING, ELBOWS, TEES, AND NOZZLES SUPPLIED BY CAS
- RELOCATE NOZZLES IF FLOW PATTERN IS BLOCKED BY SHELVING, SALAMANDERS, ETC.
- MAXIMUM 9 ELBOWS IN SUPPLY LINE.
- MINIMUM 72 INCHES OF AGENT LINE FROM TANK TO FIRST NOZZLE.
- IF APPLICABLE, PRE-PIPED CHARBROILER DROPS ARE SHIPPED LOOSE.
- FACTORY PIPING EXTENDS A MAXIMUM OF 6" ABOVE THE TOP OF THE HOOD.

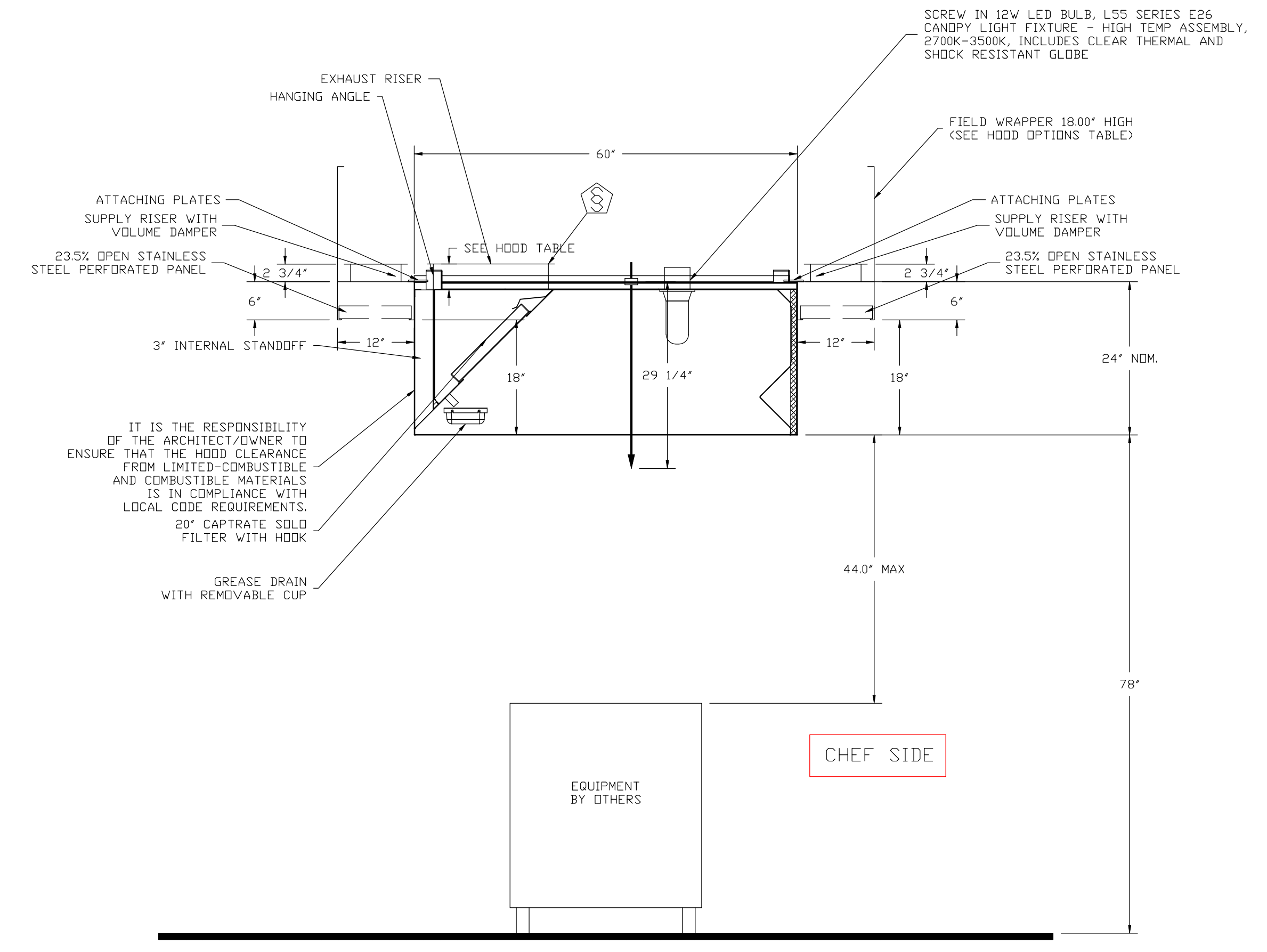
- APPLIANCE DIMENSIONS LISTED REPRESENT THE COOKING SURFACE SIZE, NOT THE OVERALL APPLIANCE SIZE.

- THIS FIRE SYSTEM COMPLIES WITH U.L. 300 REQUIREMENTS

Job #: 3120610  
Job Name: Campbell University\_R6-FC  
Drawn By:  
System Size: ANSUL-3.0 Total FP required: 6  
Hood # 18 10' 2.00" Long x 60" Wide x 24" High  
Riser # 1 Size: 18" Dia.  
Hood # 18 Metal Blow-Off Caps Included.

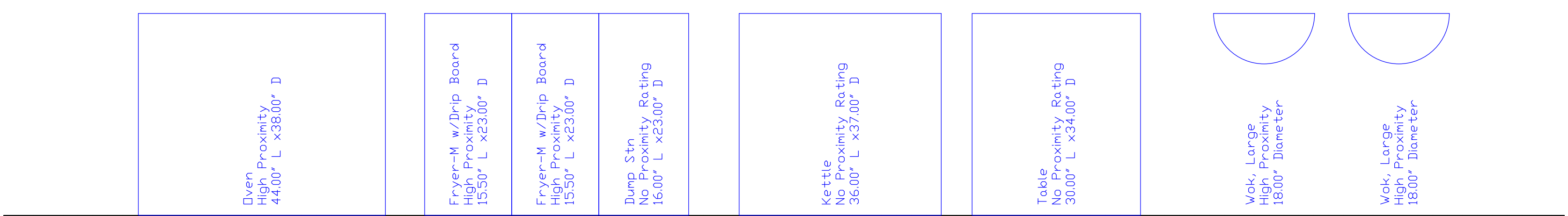
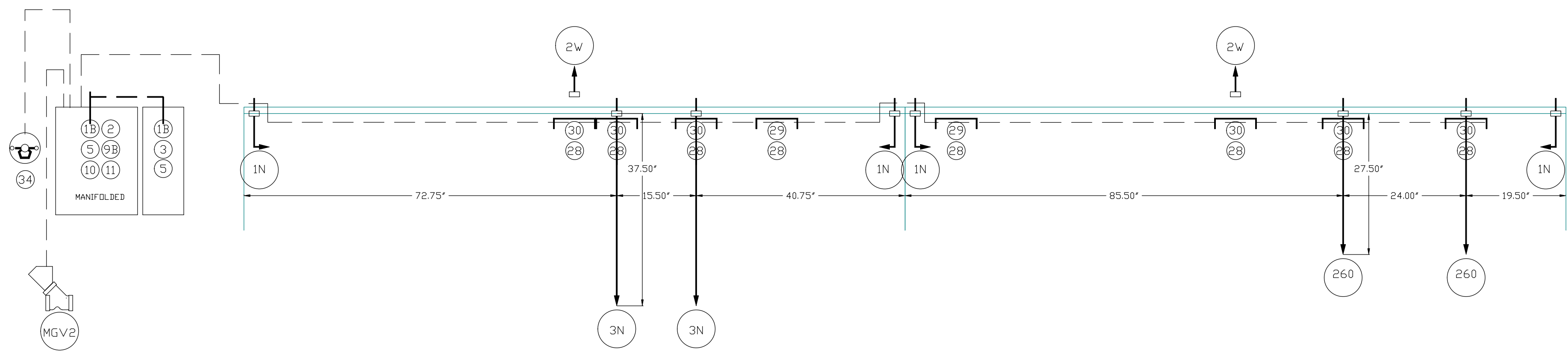
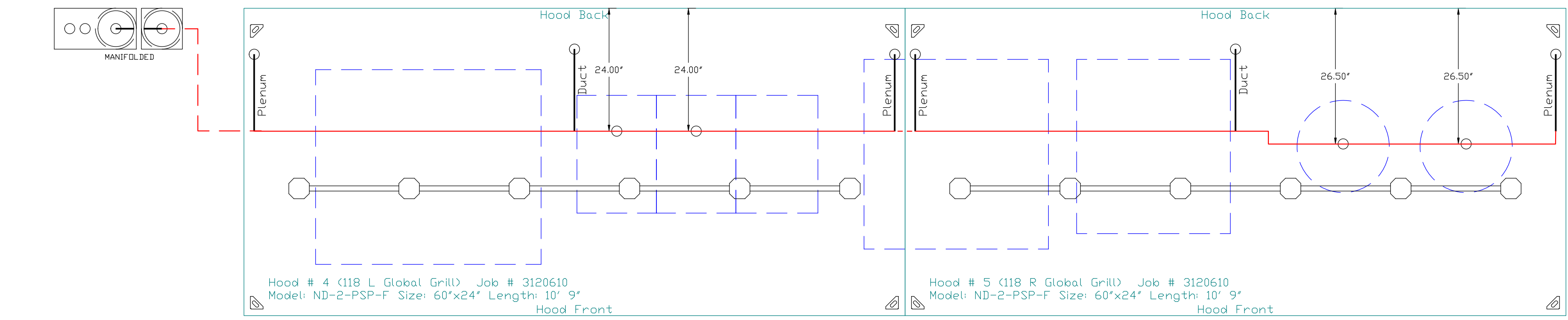
**LEGEND - WALL MOUNTED ANSUL SYSTEM**

- 1A 1.5 GALLON TANK
- 1B 3.0 GALLON TANK
- 2 AUTOMAN RELEASE
- 3 3 GALLON TANK ENCLOSURE
- 3A 6 GALLON TANK ENCLOSURE
- 4 REGULATED ACTUATOR
- 5 ANSULEX LIQUID AGENT (3 GAL.)
- 6 ANSULEX LIQUID AGENT (1.5 GAL.)
- 7 CARTRIDGE (101-20)
- 8 CARTRIDGE (101-10)
- 9 CARTRIDGE (101-30)
- 9A CARTRIDGE (LT-A-101-30)
- 9B DOUBLE TANK CARTRIDGE
- 10 TEST LINK
- 11 DOUBLE MICROSWITCH
- 2W DUCT NOZZLE (419337)
- 1W NOZZLE ASSEMBLY (419336)
- 1F NOZZLE ASSEMBLY (419333)
- 1N NOZZLE ASSEMBLY (419335)
- 1/2N NOZZLE ASSEMBLY (419334)
- 3N NOZZLE ASSEMBLY (419338)
- 245 NOZZLE ASSEMBLY (419340)
- 230 NOZZLE ASSEMBLY (419339)
- 2120 NOZZLE ASSEMBLY (419343)
- 290 NOZZLE ASSEMBLY (419342)
- 260 NOZZLE ASSEMBLY (419341)
- 28 DETECTOR BRACKET
- 29 LOW TEMP FUSIBLE LINK
- 30 HIGH TEMP FUSIBLE LINK
- MGV MECHANICAL GAS VALVE
- EGV ELECTRICAL GAS VALVE
- 34 REMOTE MANUAL PULL STATION
- S SWIVEL ADAPTOR



SECTION VIEW - MODEL 6024ND-2WI-PSP-FB  
HOOD - #18

DUCT NOZZLE AND  
PLENUM SPRAY BAR LOCATION



NOTES

- FIELD PIPE DROPS AS SHOWN
- SLEEVING, ELBOWS, TEES, AND NOZZLES SUPPLIED BY CAS
- RELOCATE NOZZLES IF FLOW PATTERN IS BLOCKED BY SHELVEING, SALAMANDERS, ETC.
- MAXIMUM 9 ELBOWS IN SUPPLY LINE.
- MINIMUM 72 INCHES OF AGENT LINE FROM TANK TO FIRST NOZZLE.
- IF APPLICABLE, PRE-PIPED CHARBROILER DROPS ARE SHIPPED LOOSE.
- FACTORY PIPING EXTENDS A MAXIMUM OF 6' ABOVE THE TOP OF THE HOOD.

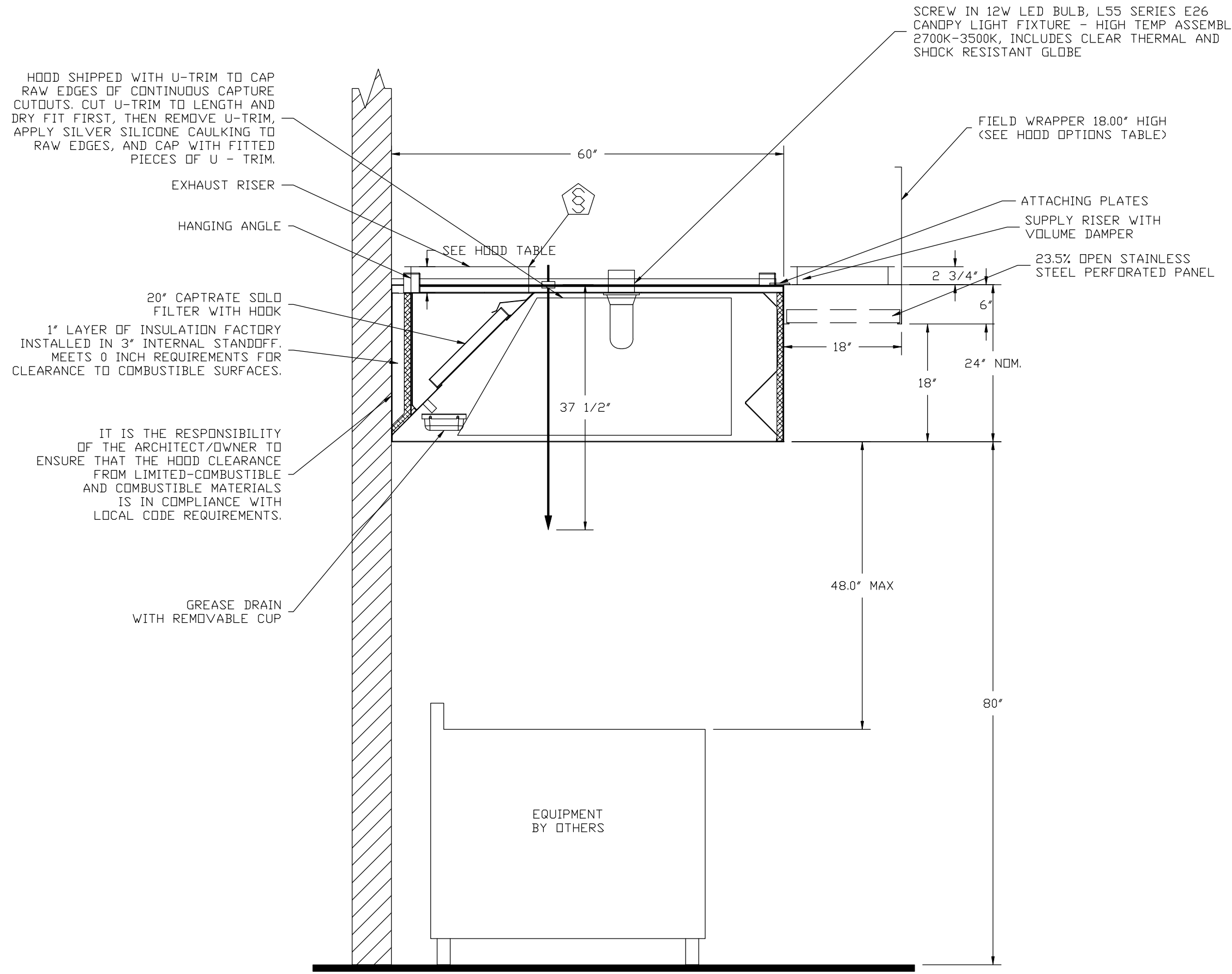
- APPLIANCE DIMENSIONS LISTED REPRESENT THE COOKING SURFACE SIZE, NOT THE OVERALL APPLIANCE SIZE.

- THIS FIRE SYSTEM COMPLIES WITH UL 300 REQUIREMENTS

Job #: 3120610  
 Job Name: Campbell University\_R6-FC  
 Drawn By:  
 System Size: ANSUL-3.0/3.0-MANIFOLD Total FP required: 18  
 Hood # 8 10' 9.00' Long x 60' Wide x 24' High  
 Riser # 1 Size: 18" Dia.  
 Hood # 8 Metal Blow-Off Caps included.  
 Hood # 9 10' 9.00' Long x 60' Wide x 24' High  
 Riser # 1 Size: 18" Dia.  
 Hood # 9 Metal Blow-Off Caps included.

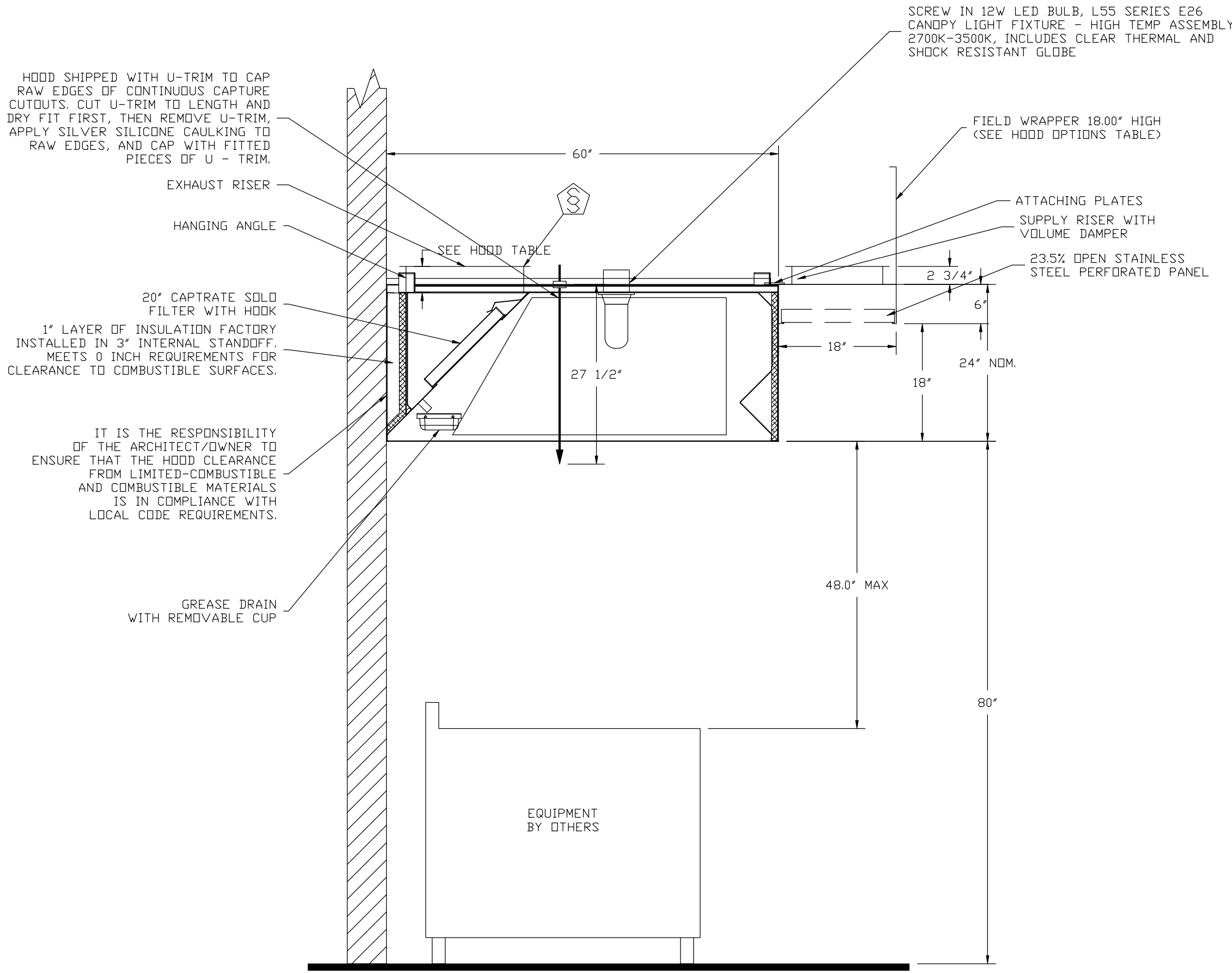
LEGEND - WALL MOUNTED ANSUL SYSTEM

- 1A 1.5 GALLON TANK
- 1B 3.0 GALLON TANK
- 2 AUTOMAN RELEASE
- 3 3 GALLON TANK ENCLOSURE
- 3A 6 GALLON TANK ENCLOSURE
- 4 REGULATED ACTUATOR
- 5 ANSULEX LIQUID AGENT (3 GAL.)
- 6 ANSULEX LIQUID AGENT (1.5 GAL.)
- 7 CARTRIDGE (101-20)
- 8 CARTRIDGE (101-10)
- 9 CARTRIDGE (101-30)
- 9A CARTRIDGE (LT-A-101-30)
- 9B DOUBLE TANK CARTRIDGE
- 10 TEST LINK
- 11 DOUBLE MICROSWITCH
- 2W DUCT NOZZLE (419337)
- 1W NOZZLE ASSEMBLY (419336)
- 1F NOZZLE ASSEMBLY (419333)
- 1N NOZZLE ASSEMBLY (419335)
- 1/2N NOZZLE ASSEMBLY (419334)
- 3N NOZZLE ASSEMBLY (419338)
- 245 NOZZLE ASSEMBLY (419340)
- 230 NOZZLE ASSEMBLY (419339)
- 2120 NOZZLE ASSEMBLY (419343)
- 290 NOZZLE ASSEMBLY (419342)
- 260 NOZZLE ASSEMBLY (419341)
- 28 DETECTOR BRACKET
- 29 LOW TEMP FUSIBLE LINK
- 30 HIGH TEMP FUSIBLE LINK
- MGV MECHANICAL GAS VALVE
- EGV ELECTRICAL GAS VALVE
- 34 REMOTE MANUAL PULL STATION
- S SWIVEL ADAPTOR



SECTION VIEW - MODEL 6024ND-2-PSP-F  
 HOOD - #8

DUCT NOZZLE AND  
 PLENUM SPRAY BAR LOCATION

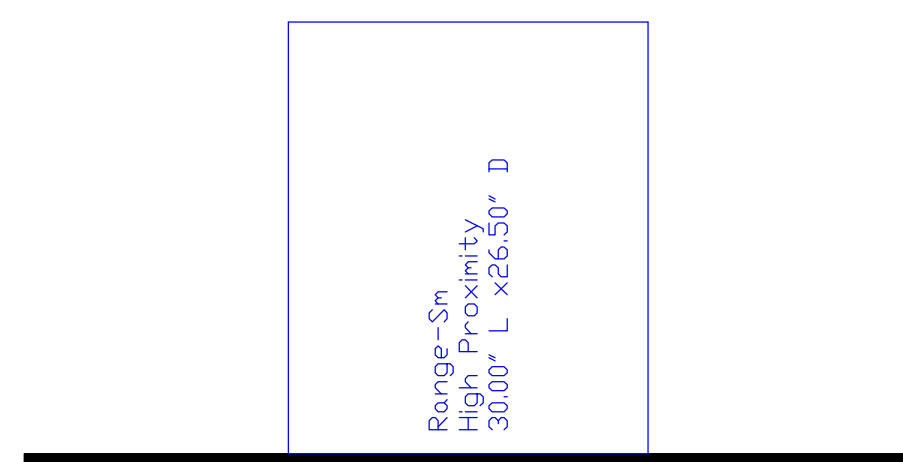
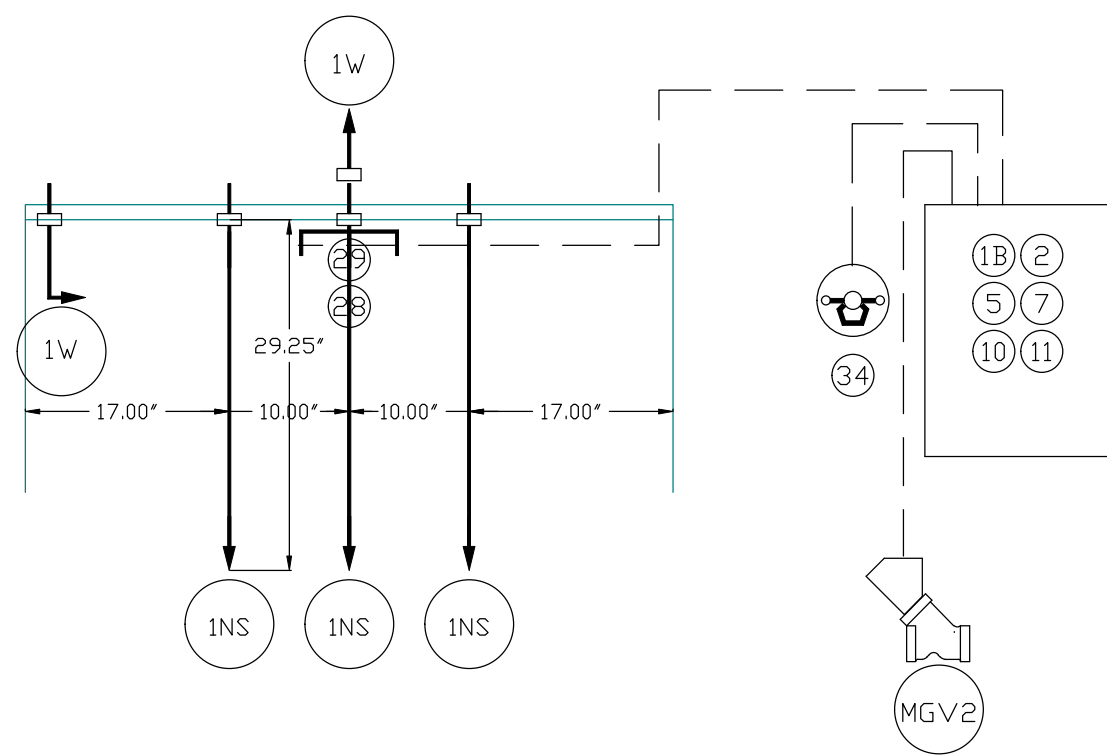
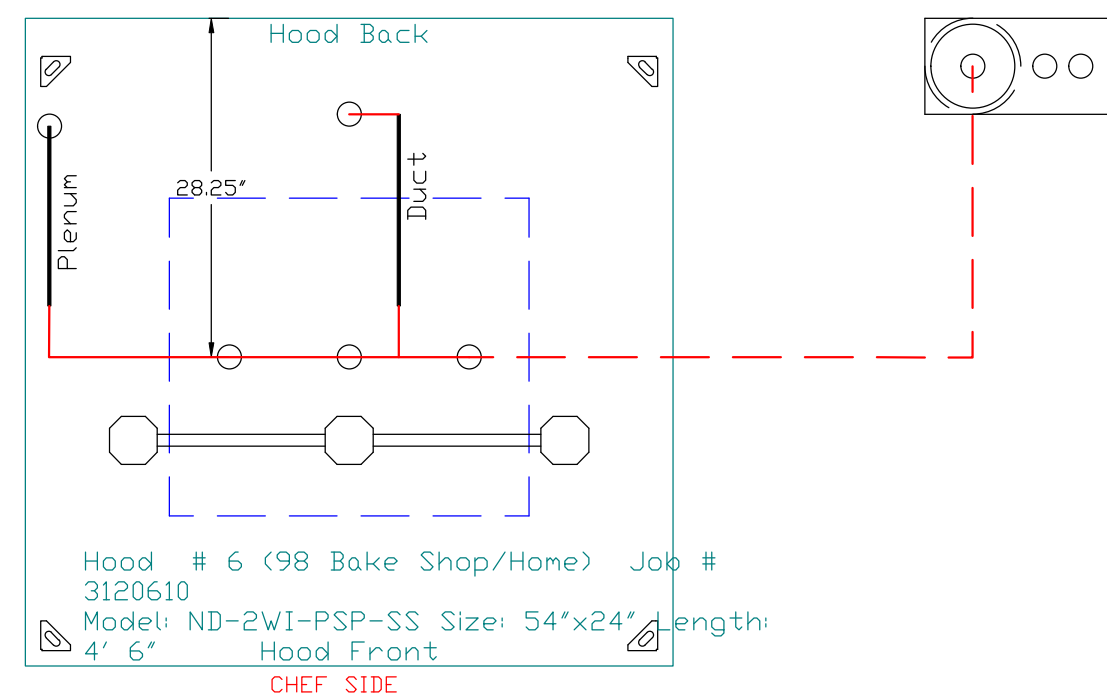


SECTION VIEW - MODEL 6024ND-2-PSP-F  
 HOOD - #9

DUCT NOZZLE AND  
 PLENUM SPRAY BAR LOCATION

Campbell University\_R6-FC  
 450 Leslie Campbell Ave,  
 BUJES CREEK, NC, 27506

DATE: 6/29/2018  
 DWG.#: 3120610  
 DRAWN BY: Reg83-BAS  
 SCALE: 3/4" = 1'-0"  
 MASTER DRAWING

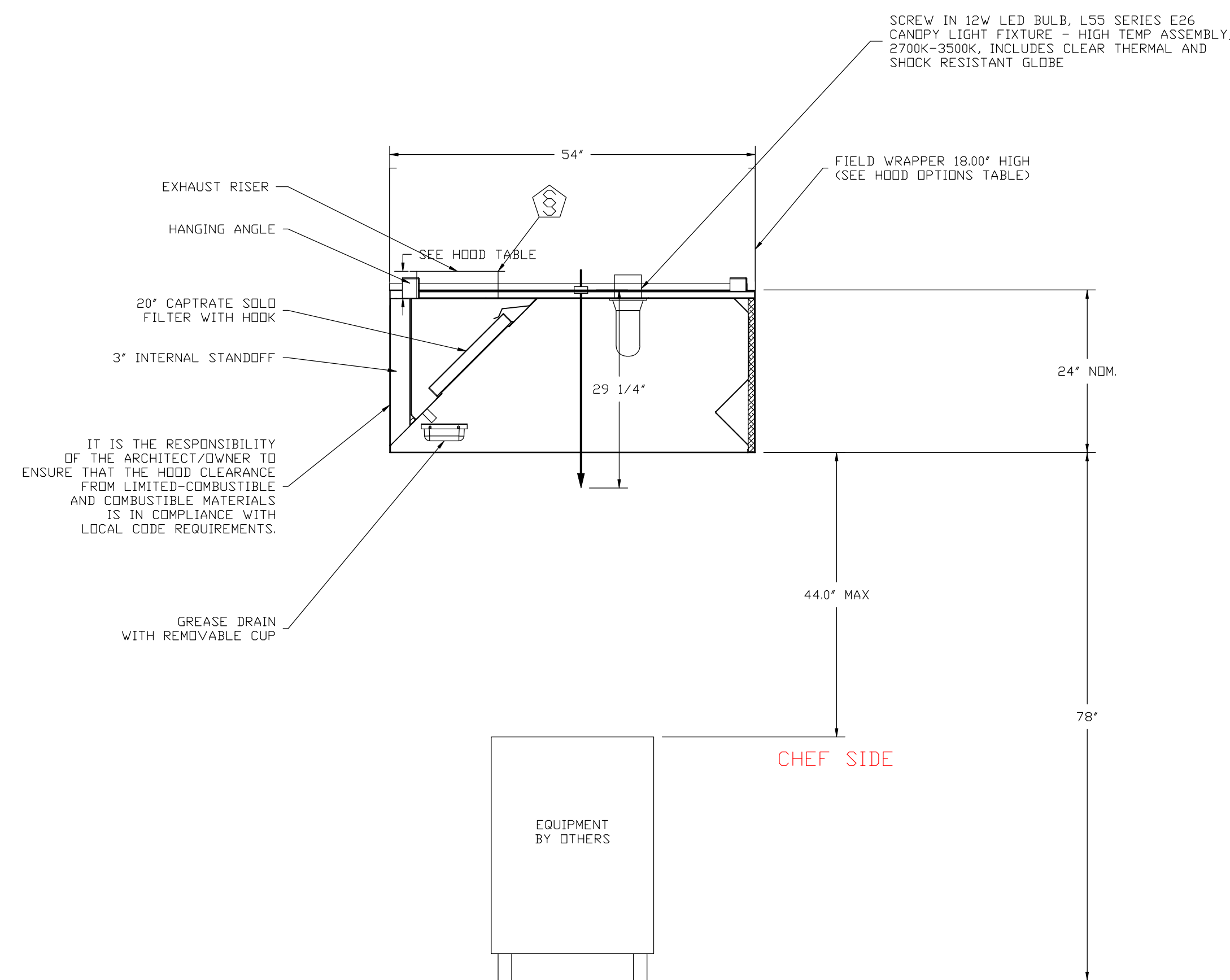


NOTES  
 - FIELD PIPE DROPS AS SHOWN  
 - SLEEVING, ELBOWS, TEES, AND NOZZLES SUPPLIED BY CAS  
 - RELOCATE NOZZLES IF FLOW PATTERN IS BLOCKED BY SHELVING, SALAMANDERS, ETC.  
 - MAXIMUM 9 ELBOWS IN SUPPLY LINE.  
 - MINIMUM 72 INCHES OF AGENT LINE FROM TANK TO FIRST NOZZLE.  
 - IF APPLICABLE, PRE-PIPED CHARBROILER DROPS ARE SHIPPED LOOSE.  
 - FACTORY PIPING EXTENDS A MAXIMUM OF 6\"/>

- THIS FIRE SYSTEM COMPLIES WITH UL 300 REQUIREMENTS  
 Job # 3120610  
 Job Name: Campbell University\_R6-FC  
 Drawn By:  
 System Size: ANSUL-3.0 Total FP required: 5  
 Hood # 10 4' 6.00\"/>

**LEGEND - WALL MOUNTED ANSUL SYSTEM**

- 1A 1.5 GALLON TANK
- 1B 3.0 GALLON TANK
- 2 AUTOMAN RELEASE
- 3 3 GALLON TANK ENCLOSURE
- 3A 6 GALLON TANK ENCLOSURE
- 4 REGULATED ACTUATOR
- 5 ANSULEX LIQUID AGENT (3 GAL.)
- 6 ANSULEX LIQUID AGENT (1.5 GAL.)
- 7 CARTRIDGE (101-20)
- 8 CARTRIDGE (101-10)
- 9 CARTRIDGE (101-30)
- 9A CARTRIDGE (LT-A-101-30)
- 9B DOUBLE TANK CARTRIDGE
- 10 TEST LINK
- 11 DOUBLE MICROSWITCH
- 2W DUCT NOZZLE (419337)
- 1W NOZZLE ASSEMBLY (419336)
- 1F NOZZLE ASSEMBLY (419333)
- 1N NOZZLE ASSEMBLY (419335)
- 1/2N NOZZLE ASSEMBLY (419334)
- 3N NOZZLE ASSEMBLY (419338)
- 245 NOZZLE ASSEMBLY (419340)
- 230 NOZZLE ASSEMBLY (419339)
- 2120 NOZZLE ASSEMBLY (419343)
- 290 NOZZLE ASSEMBLY (419342)
- 260 NOZZLE ASSEMBLY (419341)
- 28 DETECTOR BRACKET
- 29 LOW TEMP FUSIBLE LINK
- 30 HIGH TEMP FUSIBLE LINK
- MGV MECHANICAL GAS VALVE
- EGV ELECTRICAL GAS VALVE
- 34 REMOTE MANUAL PULL STATION
- S SWIVEL ADAPTOR



SECTION VIEW - MODEL 5424ND-2WI-PSP-SS  
 HOOD - #10

DUCT NOZZLE AND  
 PLENUM SPRAY BAR LOCATION

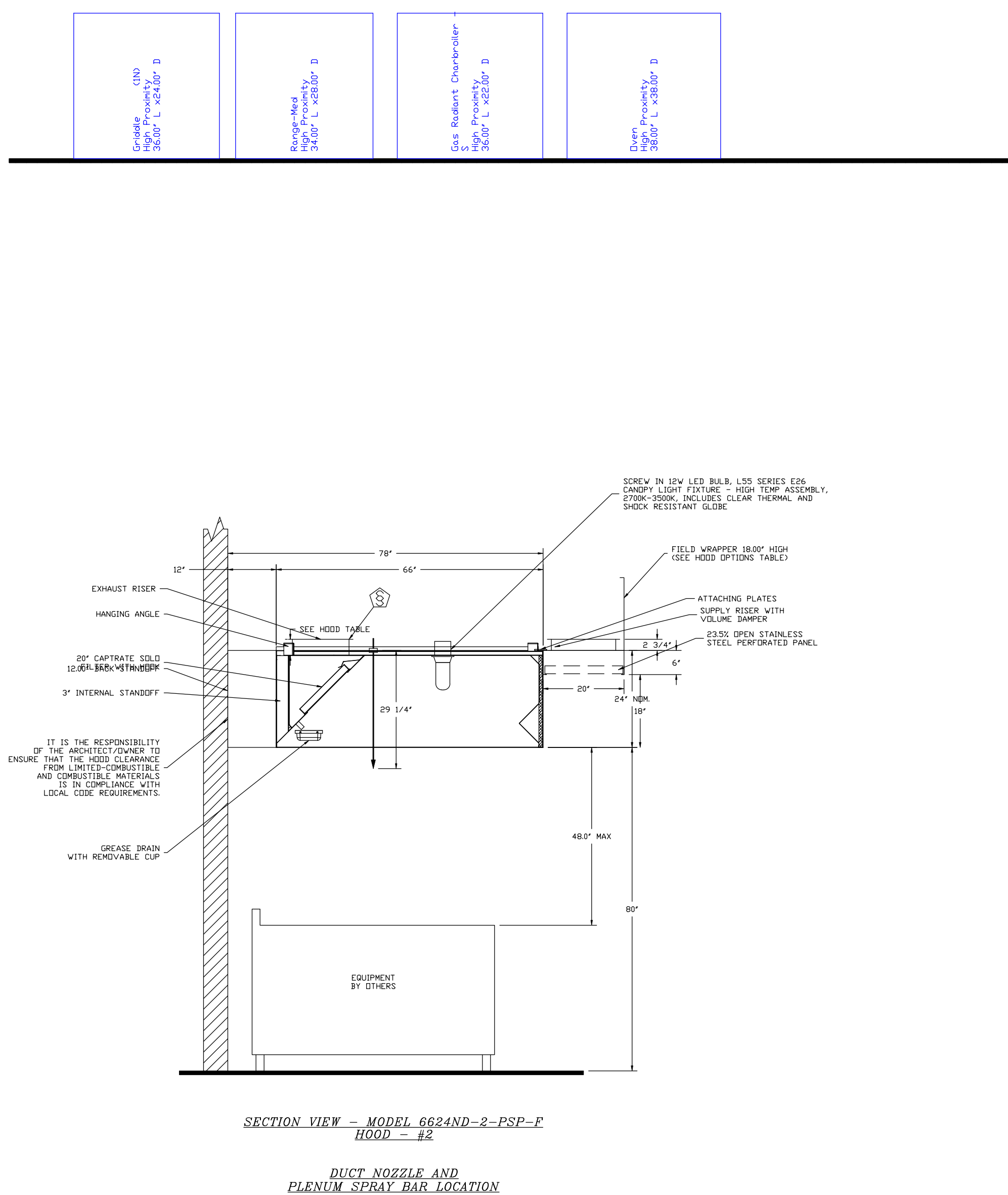
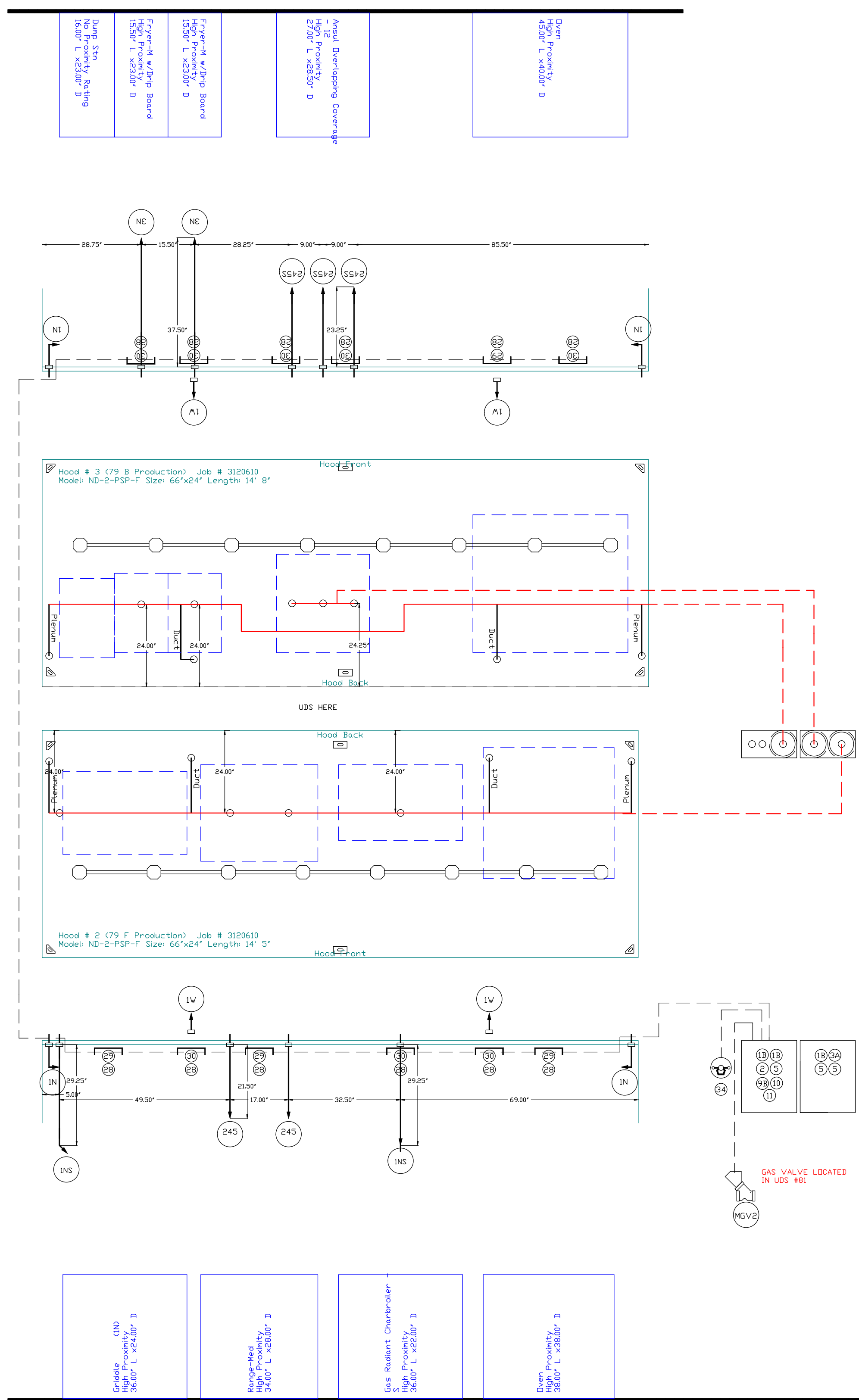
**REVISIONS**

DESCRIPTION	DATE

www.captivefire.com  
 Pittsburgh Foodservice  
 507 Duncan Ct, Cranberry Township, PA, 15066 PHONE: (724) 776-7501 FAX: (724) 776-7522 EMAIL: reg83@captivefire.com

Campbell University\_R6-FC  
 450 Leslie Campbell Ave,  
 BUIES CREEK, NC, 27506

DATE: 6/29/2018  
 DWG.#: 3120610  
 DRAWN BY: Reg83-BAS  
 SCALE: 3/4" = 1'-0"  
 MASTER DRAWING



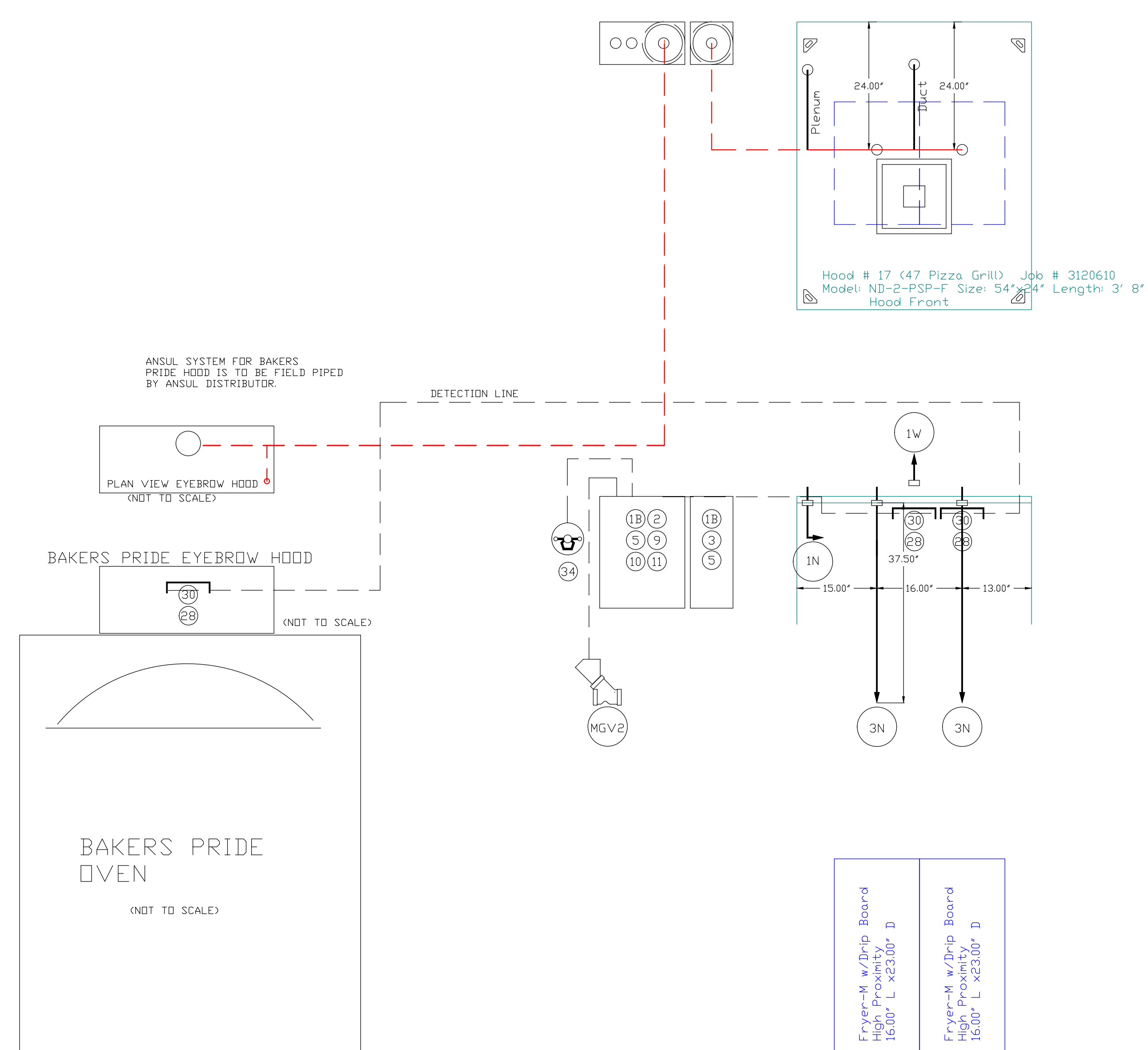
REVISIONS	DESCRIPTION	DATE
Δ		
Δ		
Δ		
Δ		



Campbell University\_R6-FC  
450 Leslie Campbell Ave,  
BUJES CREEK, NC, 27506

DATE: 6/29/2018  
DWG.#: 3120610  
DRAWN BY: Reg3-BAS  
SCALE: 1/2" = 1'-0"  
MASTER DRAWING

SHEET NO.



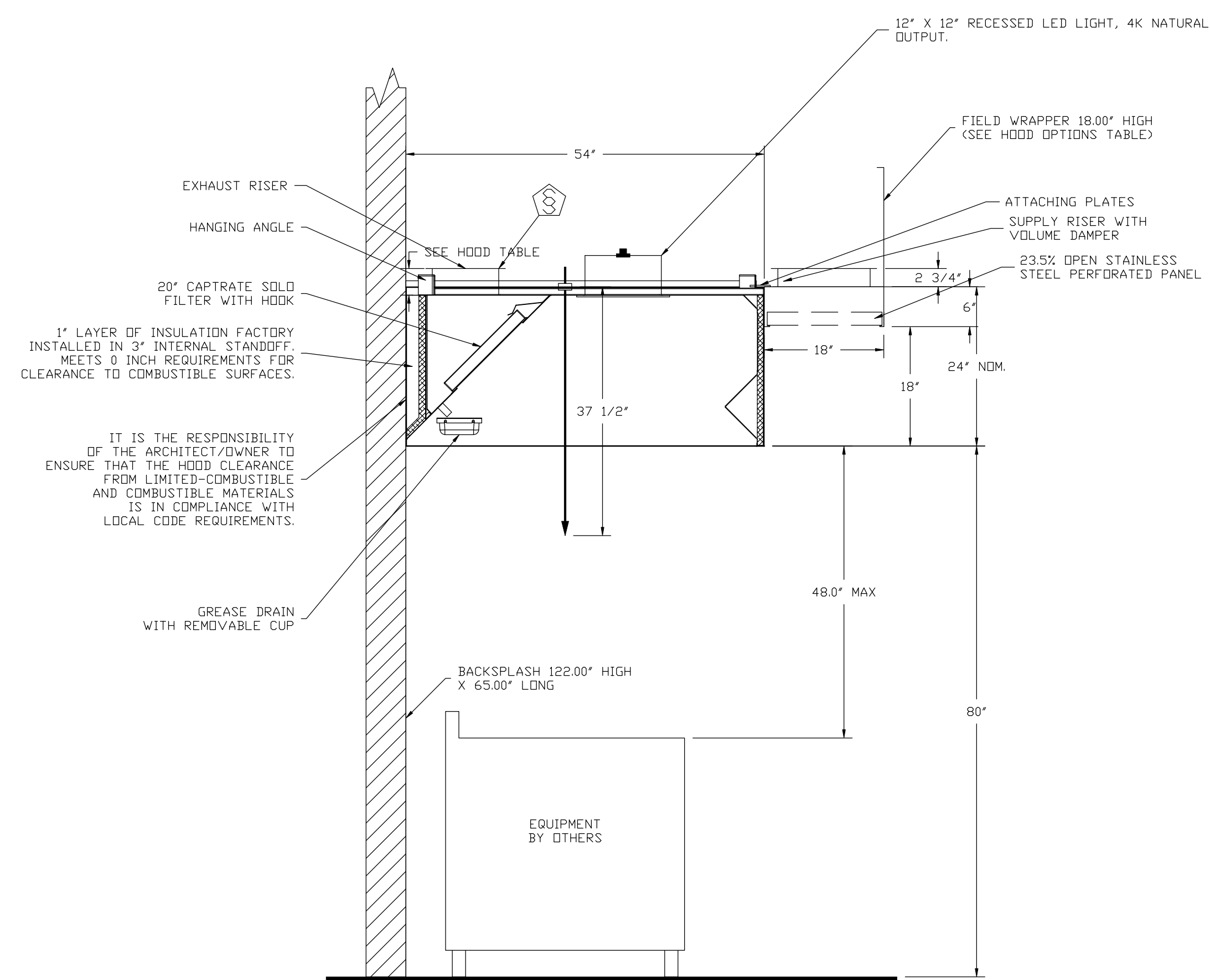
NOTES

- FIELD PIPE DROPS AS SHOWN
- SLEEVING, ELBOWS, TEES, AND NOZZLES SUPPLIED BY CAS
- RELOCATE NOZZLES IF FLOW PATTERN IS BLOCKED BY SHELVING, SALAMANDERS, ETC.
- MAXIMUM 9 ELBOWS IN SUPPLY LINE.
- MINIMUM 72 INCHES OF AGENT LINE FROM TANK TO FIRST NOZZLE.
- IF APPLICABLE, PRE-PIPED CHARBROILER DROPS ARE SHIPPED LOOSE.
- FACTORY PIPING EXTENDS A MAXIMUM OF 6' ABOVE THE TOP OF THE HOOD.
- APPLIANCE DIMENSIONS LISTED REPRESENT THE COOKING SURFACE SIZE, NOT THE OVERALL APPLIANCE SIZE.
- THIS FIRE SYSTEM COMPLIES WITH UL 300 REQUIREMENTS

Job #: 3120610  
Job Name: Campbell University\_R6-FC  
Drawn By:  
System Size: ANSUL-3.0/3.0 Total FP required: 10  
Hood # 17 3' 8.00' Long x 54' Wide x 24' High  
Riser # 1 Size: 10" Dia.  
Hood # 17 Metal Blow-Off Caps included.

**LEGEND - WALL MOUNTED ANSUL SYSTEM**

- 1A 1.5 GALLON TANK
- 1B 3.0 GALLON TANK
- 2 AUTOMAN RELEASE
- 3 3 GALLON TANK ENCLOSURE
- 3A 6 GALLON TANK ENCLOSURE
- 4 REGULATED ACTUATOR
- 5 ANSULEX LIQUID AGENT (3 GAL.)
- 6 ANSULEX LIQUID AGENT (1.5 GAL.)
- 7 CARTRIDGE (101-20)
- 8 CARTRIDGE (101-10)
- 9 CARTRIDGE (101-30)
- 9A CARTRIDGE (LT-A-101-30)
- 9B DOUBLE TANK CARTRIDGE
- 10 TEST LINK
- 11 DOUBLE MICROSWITCH
- 2W DUCT NOZZLE (419337)
- 1W NOZZLE ASSEMBLY (419336)
- 1F NOZZLE ASSEMBLY (419333)
- 1N NOZZLE ASSEMBLY (419335)
- 1/2N NOZZLE ASSEMBLY (419334)
- 3N NOZZLE ASSEMBLY (419338)
- 245 NOZZLE ASSEMBLY (419340)
- 230 NOZZLE ASSEMBLY (419339)
- 2120 NOZZLE ASSEMBLY (419343)
- 290 NOZZLE ASSEMBLY (419342)
- 260 NOZZLE ASSEMBLY (419341)
- 28 DETECTOR BRACKET
- 29 LOW TEMP FUSIBLE LINK
- 30 HIGH TEMP FUSIBLE LINK
- MGV MECHANICAL GAS VALVE
- EGV ELECTRICAL GAS VALVE
- 34 REMOTE MANUAL PULL STATION
- S SWIVEL ADAPTOR



SECTION VIEW - MODEL 5424ND-2-PSP-F HOOD - #17

DUCT NOZZLE AND PLENUM SPRAY BAR LOCATION

REVISIONS	DESCRIPTION	DATE

www.captivefire.com

**CAPTIVE FIRE** Pittsburgh Foodservice

507 Dunedin Ct, Cranberry Township, PA, 15066 PHONE: (724) 776-7501 FAX: (724) 776-7522 EMAIL: reg83@captivefire.com

Campbell University\_R6-FC

450 Leslie Campbell Ave,  
BUJES CREEK, NC, 27506

DATE: 6/29/2018

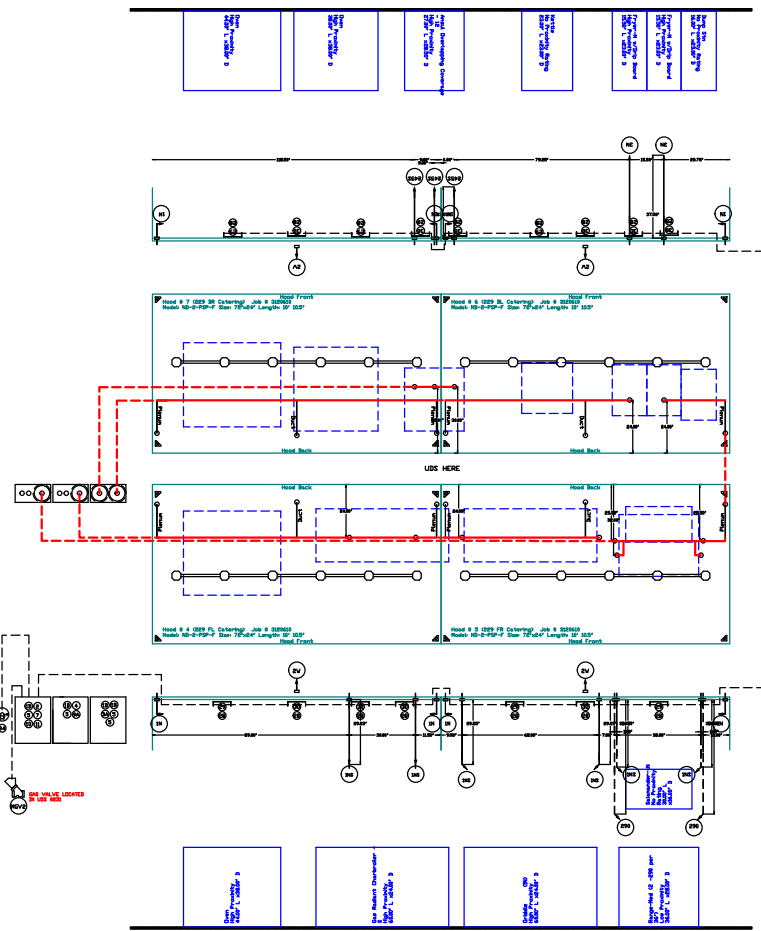
DWG.#: 3120610

DRAWN BY: Reg83-BAS

SCALE: 3/4" = 1'-0"

MASTER DRAWING





- NOTES**
- FIELD PIPE IMPOSE AS SHOWN
  - SLEEVING THROUGH TESTS AND NOZZLES SUPPLIED BY CAS
  - INDICATE NOZZLES IF FLOW PATTERN IS BLOCKED BY SHELVING
  - MAXIMUM OF 4 ELBOWS IN SUPPLY LINE
  - MINIMUM 7/8 INCHES OF AGENT LINE FROM TANK TO FIRST NOZZLE
  - IF APPLICABLE, PROVIDE CHARGED IMPS AND SHOWER LINES
  - FACTORY PIPING EXTENDS A MAXIMUM OF 6" ABOVE THE TOP OF THE HOOD.
  - APPLIANCE DIMENSIONS LISTED REPRESENT THE COOKING SURFACE SIZE, NOT THE OVERALL APPLIANCE SIZE.
  - THIS FIRE SYSTEM COMPLIES WITH UL 300 REQUIREMENTS

Job #: 202610  
 Job Name: Campbell University\_R6-FC  
 System Size: ANSL-30/20/30/30 Total FP required 38  
 Hood # 1 10' 0" Long x 72" Wide x 24" High  
 Hood # 2 Metal Blow-Off Caps Included  
 Hood # 3 10' 0" Long x 72" Wide x 24" High  
 Hood # 4 Metal Blow-Off Caps Included  
 Hood # 5 10' 0" Long x 72" Wide x 24" High  
 Hood # 6 Metal Blow-Off Caps Included  
 Hood # 7 10' 0" Long x 72" Wide x 24" High  
 Hood # 8 Metal Blow-Off Caps Included  
 Hood # 9 10' 0" Long x 72" Wide x 24" High  
 Hood # 10 Metal Blow-Off Caps Included

- LEGEND - WALL MOUNTED ANSL SYSTEM**
- 1A 15 GALLON TANK
  - 1B 30 GALLON TANK
  - 2 AUTOMATIC RELEASE
  - 3 2 GALLON TANK ENCLOSURE
  - 3A 2 GALLON TANK ENCLOSURE
  - 4 REGULATOR ACTUATOR
  - 5 ANSLEX LIQUID AGENT (3 GAL.)
  - 6 ANSLEX LIQUID AGENT (1.5 GAL.)
  - 7 CARTRIDGE (30-30)
  - 8 CARTRIDGE (30-30)
  - 9A CARTRIDGE (1.5-30)
  - 9B DOUBLE TANK CARTRIDGE
  - 10 TEST LINK
  - 11 BULB IN REDUCED VOLTAGE
  - 12 NOZZLE ASSEMBLY (419327)
  - 13 NOZZLE ASSEMBLY (419328)
  - 14 NOZZLE ASSEMBLY (419329)
  - 15 NOZZLE ASSEMBLY (419330)
  - 16 NOZZLE ASSEMBLY (419331)
  - 17 NOZZLE ASSEMBLY (419332)
  - 18 NOZZLE ASSEMBLY (419333)
  - 19 NOZZLE ASSEMBLY (419334)
  - 20 NOZZLE ASSEMBLY (419335)
  - 21 NOZZLE ASSEMBLY (419336)
  - 22 NOZZLE ASSEMBLY (419337)
  - 23 NOZZLE ASSEMBLY (419338)
  - 24 NOZZLE ASSEMBLY (419339)
  - 25 NOZZLE ASSEMBLY (419340)
  - 26 DETECTOR BRACKET
  - 27 HIGH TEMP FIBERGLASS LINK
  - 28 MECHANICAL GAS VALVE
  - 29 ELECTRICAL GAS VALVE
  - 30 REMOTE MANUAL PULL STATION
  - 31 SWIVEL ADAPTOR

