

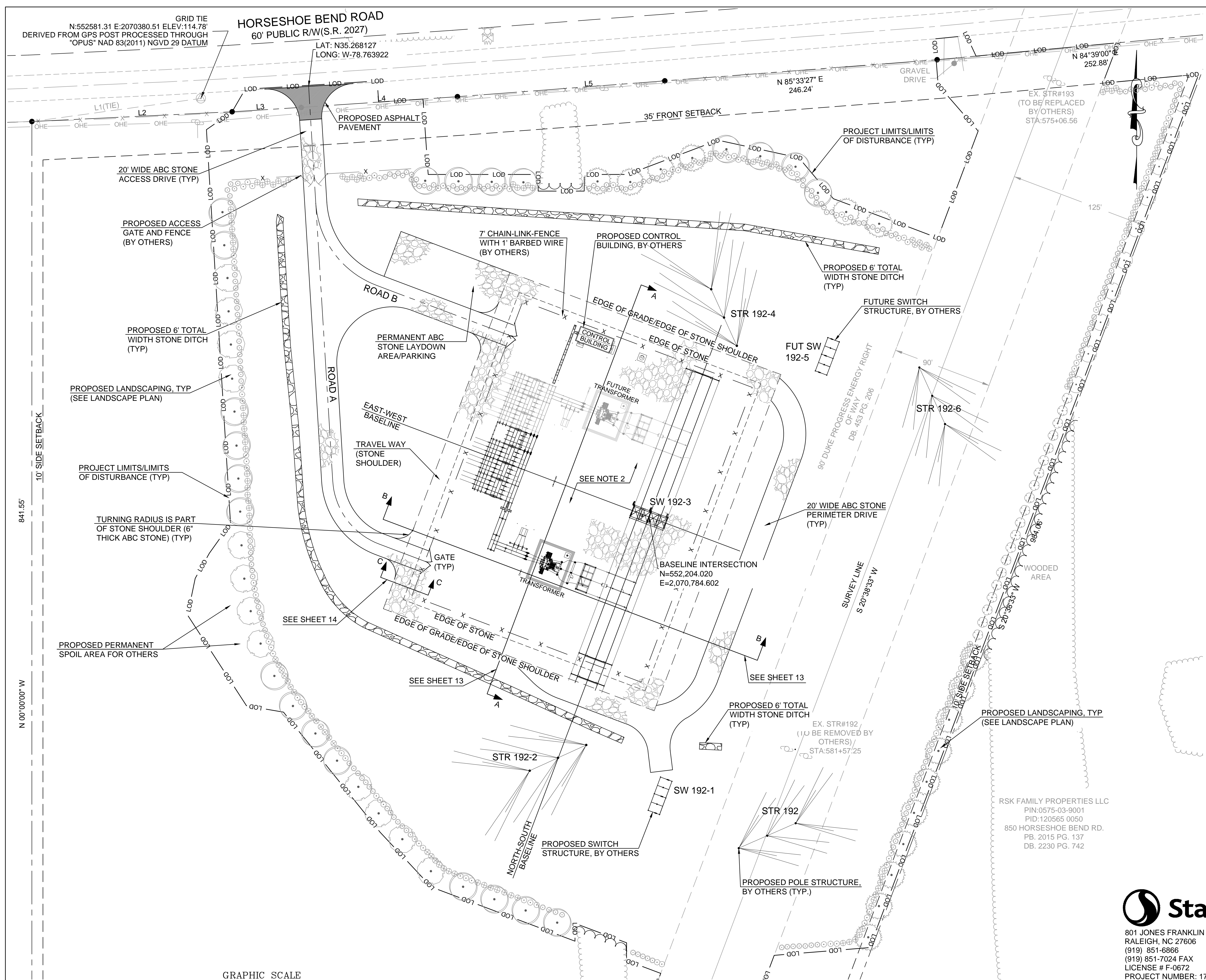
GRID TIE
 N=552581.31 E=2070380.51 ELEV:114.78'
 DERIVED FROM GPS POST PROCESSED THROUGH
 "OPUS" NAD 83(2011) NGVD 29 DATUM

HORSESHOE BEND ROAD
 60' PUBLIC R/W(S.R. 2027)

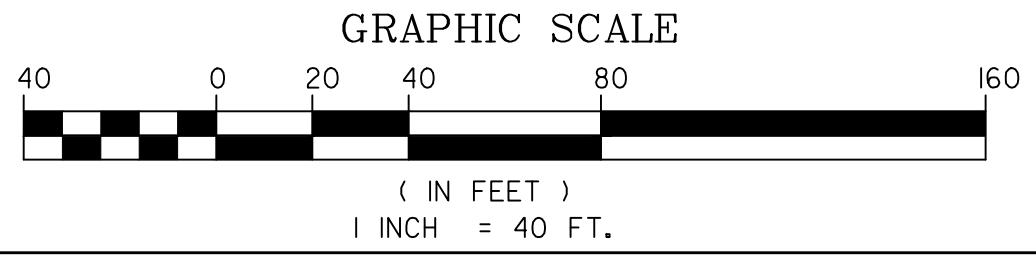
LAT: N35.268127
 LONG: W-78.763922

NOTES:

1. ALL BEARINGS AND DISTANCES ARE GRID BEARINGS AND GROUND DISTANCES UNLESS OTHERWISE NOTED.
2. SUBSTATION WILL BE FENCED (7' CHAIN-LINK W/ 1' BARBED WIRE) AND PAD COVERED WITH 6" STONE, EXTENDING 6' OUTSIDE FENCED AREA UNLESS SHOWN OTHERWISE.
3. SITE LIGHTING INSTALLED WITHIN FENCED AREA WILL EMIT LESS THAN 1 FT-CANDLE AT ANY PROPERTY LINE.
4. NO WATER SERVICE OR SEWER SERVICE REQUIRED.
5. NO HAZARDOUS MATERIALS WILL BE USED OR STORED ON SITE.
6. SPILL PREVENTION, CONTROL, AND COUNTERMEASURE (SPCC) PLAN IN ACCORDANCE WITH EPA REQUIREMENTS WILL BE LOCATED ON SITE.
7. SUBSTATION WILL BE IN OPERATION 24 HOURS A DAY, SEVEN DAYS A WEEK.
8. HARNETT COUNTY CONDITIONAL USE PERMIT #BA-CU-13-18, APPROVED MAY 14, 2018 WITHOUT CONDITIONS.



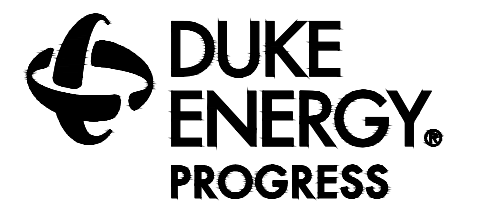
841.55'
 10' SIDE SETBACK
 N 00°00'00" W



FINAL SUBMITTAL
ISSUED FOR CONSTRUCTION

NO.	DATE	REVISION	BY	CK.	APP.
1	4-17-18	ADDED PARKING LABEL & REVISED LANDSCAPE PER COUNTY DRB COMMENTS	KV	JSS	RSJ

Stantec
 801 JONES FRANKLIN RD, SUITE 300
 RALEIGH, NC 27606
 (919) 851-6866
 (919) 851-7024 FAX
 LICENSE # F-0672
 PROJECT NUMBER: 178451074



LINDEN 230kV SUBSTATION
 OVERALL SITE PLAN

LOCATION	HARNETT COUNTY, NORTH CAROLINA
SCALE	AS NOTED
SCALE RATIO	1:1
DRAWN	MM
CHK.	JSS
APP.	RSJ
DATE	07-17-2018
DWG. NO.	RDC-73163
SHT	4 OF 17



RSK FAMILY PROPERTIES LLC
 PIN:0575-03-9001
 PID:120565 0050
 850 HORSESHOE BEND RD.
 PB. 2015 PG. 137
 DB. 2230 PG. 742

EX. STR#192,
 (TO BE REMOVED BY
 OTHERS)
 STA:581+57.25

WOODED AREA

90' DUKE PROGRESS ENERGY RIGHT
 OF WAY
 DB. 453 PG. 206

SURVEY LINE
 S 20°38'33" W

BASELINE INTERSECTION
 N=552,204.020
 E=2,070,784.602

SEE SHEET 14

SEE SHEET 13

SEE SHEET 13

TURNING RADIUS IS PART
 OF STONE SHOULDER (6"
 THICK ABC STONE) (TYP)

PROJECT LIMITS/LIMITS
 OF DISTURBANCE (TYP)

PROPOSED LANDSCAPING, TYP
 (SEE LANDSCAPE PLAN)

PROPOSED 6' TOTAL
 WIDTH STONE DITCH
 (TYP)

PROPOSED ACCESS
 GATE AND FENCE
 (BY OTHERS)

20' WIDE ABC STONE
 ACCESS DRIVE (TYP)

FUTURE SWITCH
 STRUCTURE, BY OTHERS

PROPOSED 6' TOTAL
 WIDTH STONE DITCH
 (TYP)

PROPOSED CONTROL
 BUILDING, BY OTHERS

7' CHAIN-LINK-FENCE
 WITH 1' BARBED WIRE
 (BY OTHERS)

ROAD B

ROAD A

PERMANENT ABC
 STONE LAYDOWN
 AREA/PARKING

EAST-WEST
 BASELINE

TRAVEL WAY
 (STONE
 SHOULDER)

SEE NOTE 2

SW 192-3

20' WIDE ABC STONE
 PERIMETER DRIVE
 (TYP)

STR 192-6

STR 192-4

FUT SW
 192-5

EDGE OF GRADE/EDGE OF
 STONE SHOULDER

EDGE OF STONE

CONTROL
 BUILDING

FUTURE
 TRANSFORMER

TRANSFORMER

GATE
 (TYP)

EDGE OF GRADE/EDGE OF
 STONE SHOULDER

EDGE OF STONE

STR 192-2

SW 192-1

NORTH-SOUTH
 BASELINE

PROPOSED SWITCH
 STRUCTURE, BY OTHERS

STR 192

PROPOSED POLE STRUCTURE,
 BY OTHERS (TYP.)

PROPOSED LANDSCAPING, TYP
 (SEE LANDSCAPE PLAN)

WOODED AREA

90' DUKE PROGRESS ENERGY RIGHT
 OF WAY
 DB. 453 PG. 206

SURVEY LINE
 S 20°38'33" W

BASELINE INTERSECTION
 N=552,204.020
 E=2,070,784.602

SEE SHEET 14

SEE SHEET 13

SEE SHEET 13

TURNING RADIUS IS PART
 OF STONE SHOULDER (6"
 THICK ABC STONE) (TYP)

PROJECT LIMITS/LIMITS
 OF DISTURBANCE (TYP)

PROPOSED LANDSCAPING, TYP
 (SEE LANDSCAPE PLAN)

PROPOSED 6' TOTAL
 WIDTH STONE DITCH
 (TYP)

PROPOSED ACCESS
 GATE AND FENCE
 (BY OTHERS)

20' WIDE ABC STONE
 ACCESS DRIVE (TYP)

FUTURE SWITCH
 STRUCTURE, BY OTHERS

PROPOSED 6' TOTAL
 WIDTH STONE DITCH
 (TYP)

PROPOSED CONTROL
 BUILDING, BY OTHERS

7' CHAIN-LINK-FENCE
 WITH 1' BARBED WIRE
 (BY OTHERS)

ROAD B

ROAD A

PERMANENT ABC
 STONE LAYDOWN
 AREA/PARKING

EAST-WEST
 BASELINE

TRAVEL WAY
 (STONE
 SHOULDER)

SEE NOTE 2

SW 192-3

20' WIDE ABC STONE
 PERIMETER DRIVE
 (TYP)

STR 192-6

STR 192-4

FUT SW
 192-5

EDGE OF GRADE/EDGE OF
 STONE SHOULDER

EDGE OF STONE

CONTROL
 BUILDING

FUTURE
 TRANSFORMER

TRANSFORMER

GATE
 (TYP)

EDGE OF GRADE/EDGE OF
 STONE SHOULDER

EDGE OF STONE

STR 192-2

SW 192-1

NORTH-SOUTH
 BASELINE

PROPOSED SWITCH
 STRUCTURE, BY OTHERS

STR 192

PROPOSED POLE STRUCTURE,
 BY OTHERS (TYP.)

PROPOSED LANDSCAPING, TYP
 (SEE LANDSCAPE PLAN)

WOODED AREA

90' DUKE PROGRESS ENERGY RIGHT
 OF WAY
 DB. 453 PG. 206

SURVEY LINE
 S 20°38'33" W

BASELINE INTERSECTION
 N=552,204.020
 E=2,070,784.602

SEE SHEET 14

SEE SHEET 13

SEE SHEET 13

TURNING RADIUS IS PART
 OF STONE SHOULDER (6"
 THICK ABC STONE) (TYP)

PROJECT LIMITS/LIMITS
 OF DISTURBANCE (TYP)

PROPOSED LANDSCAPING, TYP
 (SEE LANDSCAPE PLAN)

PROPOSED 6' TOTAL
 WIDTH STONE DITCH
 (TYP)

PROPOSED ACCESS
 GATE AND FENCE
 (BY OTHERS)

20' WIDE ABC STONE
 ACCESS DRIVE (TYP)

FUTURE SWITCH
 STRUCTURE, BY OTHERS

PROPOSED 6' TOTAL
 WIDTH STONE DITCH
 (TYP)

PROPOSED CONTROL
 BUILDING, BY OTHERS

7' CHAIN-LINK-FENCE
 WITH 1' BARBED WIRE
 (BY OTHERS)

ROAD B

ROAD A

PERMANENT ABC
 STONE LAYDOWN
 AREA/PARKING

EAST-WEST
 BASELINE

TRAVEL WAY
 (STONE
 SHOULDER)

SEE NOTE 2

SW 192-3

20' WIDE ABC STONE
 PERIMETER DRIVE
 (TYP)

STR 192-6

STR 192-4

FUT SW
 192-5

EDGE OF GRADE/EDGE OF
 STONE SHOULDER

EDGE OF STONE

CONTROL
 BUILDING

FUTURE
 TRANSFORMER

TRANSFORMER

GATE
 (TYP)

EDGE OF GRADE/EDGE OF
 STONE SHOULDER

EDGE OF STONE

STR 192-2

SW 192-1

NORTH-SOUTH
 BASELINE

PROPOSED SWITCH
 STRUCTURE, BY OTHERS

STR 192

PROPOSED POLE STRUCTURE,
 BY OTHERS (TYP.)

PROPOSED LANDSCAPING, TYP
 (SEE LANDSCAPE PLAN)

WOODED AREA

90' DUKE PROGRESS ENERGY RIGHT
 OF WAY
 DB. 453 PG. 206

SURVEY LINE
 S 20°38'33" W

BASELINE INTERSECTION
 N=552,204.020
 E=2,070,784.602

SEE SHEET 14

SEE SHEET 13

SEE SHEET 13

TURNING RADIUS IS PART
 OF STONE SHOULDER (6"
 THICK ABC STONE) (TYP)

PROJECT LIMITS/LIMITS
 OF DISTURBANCE (TYP)

PROPOSED LANDSCAPING, TYP
 (SEE LANDSCAPE PLAN)

PROPOSED 6' TOTAL
 WIDTH STONE DITCH
 (TYP)

PROPOSED ACCESS
 GATE AND FENCE
 (BY OTHERS)

20' WIDE ABC STONE
 ACCESS DRIVE (TYP)

FUTURE SWITCH
 STRUCTURE, BY OTHERS

PROPOSED 6' TOTAL
 WIDTH STONE DITCH
 (TYP)

PROPOSED CONTROL
 BUILDING, BY OTHERS

7' CHAIN-LINK-FENCE
 WITH 1' BARBED WIRE
 (BY OTHERS)

ROAD B

ROAD A

PERMANENT ABC
 STONE LAYDOWN
 AREA/PARKING

EAST-WEST
 BASELINE

TRAVEL WAY
 (STONE
 SHOULDER)

SEE NOTE 2

SW 192-3

20' WIDE ABC STONE
 PERIMETER DRIVE
 (TYP)

STR 192-6

STR 192-4

FUT SW
 192-5

EDGE OF GRADE/EDGE OF
 STONE SHOULDER

EDGE OF STONE

CONTROL
 BUILDING

FUTURE
 TRANSFORMER

TRANSFORMER

GATE
 (TYP)

EDGE OF GRADE/EDGE OF
 STONE SHOULDER

EDGE OF STONE

STR 192-2

SW 192-1

NORTH-SOUTH
 BASELINE

PROPOSED SWITCH
 STRUCTURE, BY OTHERS

STR 192

PROPOSED POLE STRUCTURE,
 BY OTHERS (TYP.)

PROPOSED LANDSCAPING, TYP
 (SEE LANDSCAPE PLAN)

WOODED AREA

90' DUKE PROGRESS ENERGY RIGHT
 OF WAY
 DB. 453 PG. 206

SURVEY LINE
 S 20°38'33" W

BASELINE INTERSECTION
 N=552,204.020
 E=2,070,784.602

SEE SHEET 14

SEE SHEET 13

SEE SHEET 13

TURNING RADIUS IS PART
 OF STONE SHOULDER (6"
 THICK ABC STONE) (TYP)

PROJECT LIMITS/LIMITS
 OF DISTURBANCE (TYP)

PROPOSED LANDSCAPING, TYP
 (SEE LANDSCAPE PLAN)

PROPOSED 6' TOTAL
 WIDTH STONE DITCH
 (TYP)

PROPOSED ACCESS
 GATE AND FENCE
 (BY OTHERS)

20' WIDE ABC STONE
 ACCESS DRIVE (TYP)

FUTURE SWITCH
 STRUCTURE, BY OTHERS

PROPOSED 6' TOTAL
 WIDTH STONE DITCH
 (TYP)

PROPOSED CONTROL
 BUILDING, BY OTHERS

7' CHAIN-LINK-FENCE
 WITH 1' BARBED WIRE
 (BY OTHERS)

ROAD B

ROAD A

PERMANENT ABC
 STONE LAYDOWN
 AREA/PARKING

EAST-WEST
 BASELINE

TRAVEL WAY
 (STONE
 SHOULDER)

SEE NOTE 2

SW 192-3

20' WIDE ABC STONE
 PERIMETER DRIVE
 (TYP)

STR 192-6

STR 192-4

FUT SW
 192-5

EDGE OF GRADE/EDGE OF
 STONE SHOULDER

EDGE OF STONE