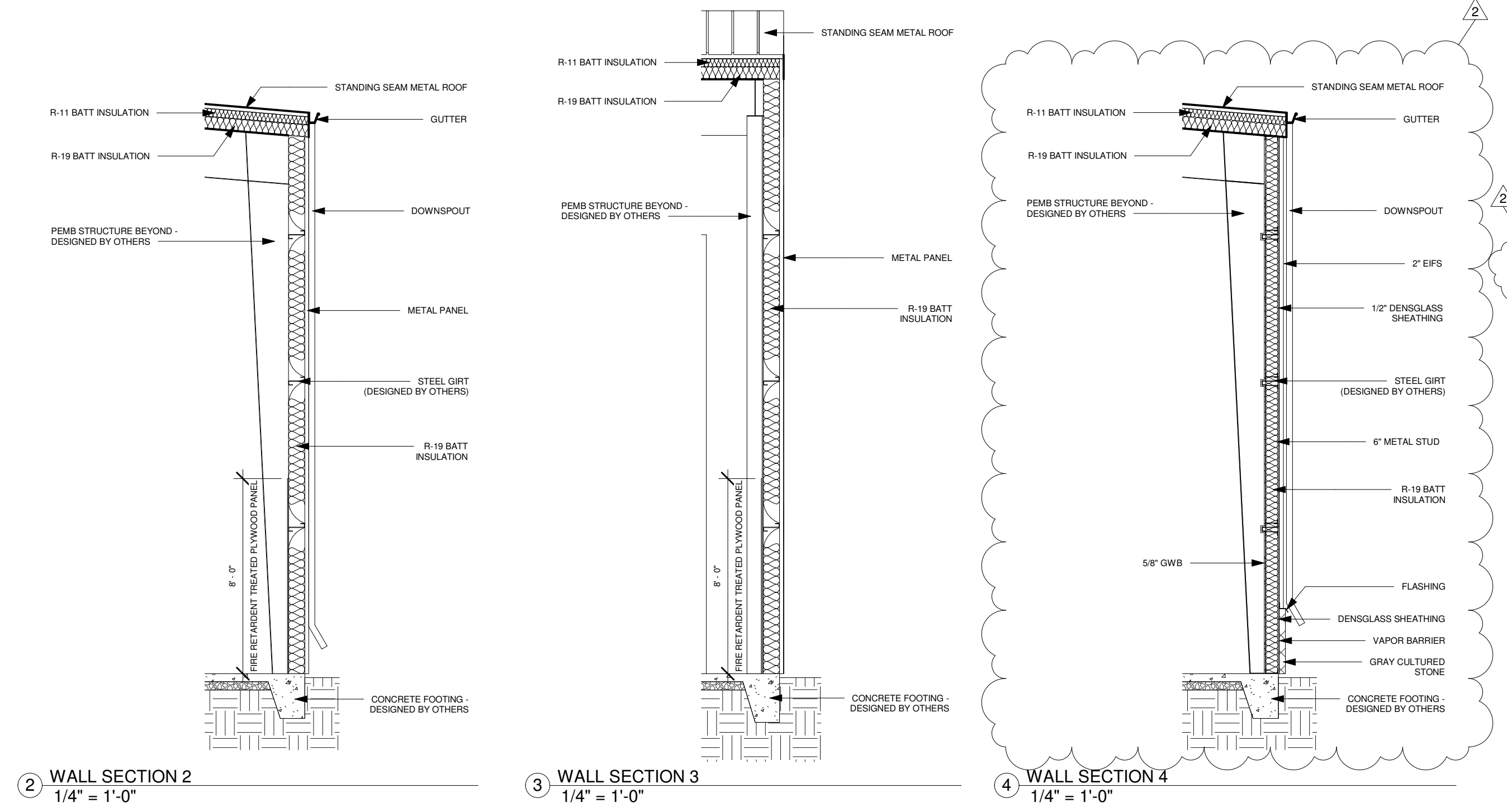


1 FIRST FLOOR PLAN - OFFICE CALLOUT
1/4" = 1'-0"

FINISH SCHEDULE						
Number	Name	Wall Finish	Base Finish	Floor Finish	Ceiling Finish	Ceiling Height
101	SHOW ROOM	PAINT	RUBBER	SEALED CONCRETE	NA	NA
102	MEN	EPOXY PAINT	RUBBER	SEALED CONCRETE	2X2 LAY-IN CEILING TILE	8'-0"
103	WOMEN	EPOXY PAINT	RUBBER	SEALED CONCRETE	2X2 LAY-IN CEILING TILE	8'-0"
104	BREAK ROOM	PAINT	RUBBER	SEALED CONCRETE	2X2 LAY-IN CEILING TILE	8'-0"
105	OFFICE 1	PAINT	RUBBER	VINYL	2X2 LAY-IN CEILING TILE	8'-0"
106	OFFICE 2	PAINT	RUBBER	VINYL	2X2 LAY-IN CEILING TILE	8'-0"
107	MEN	EPOXY PAINT	RUBBER	SEALED CONCRETE	2X2 LAY-IN CEILING TILE	8'-0"
108	SHOP	8'-0" HIGH FIRE RETARDANT TREATED PLYWOOD WALL LINER	NA	SEALED CONCRETE	NA	NA
109	STAIRWELL	PAINT	RUBBER	SEALED CONCRETE	2X2 LAY-IN CEILING TILE	FIELD VERIFY
201	CORRIDOR	PAINT	RUBBER	3/4" T&G PLYWOOD	2X2 LAY-IN CEILING TILE	8'-0"
202	OFFICE	PAINT	RUBBER	3/4" T&G PLYWOOD	2X2 LAY-IN CEILING TILE	8'-0"
203	CONFERENCE	PAINT	RUBBER	3/4" T&G PLYWOOD	2X2 LAY-IN CEILING TILE	8'-0"

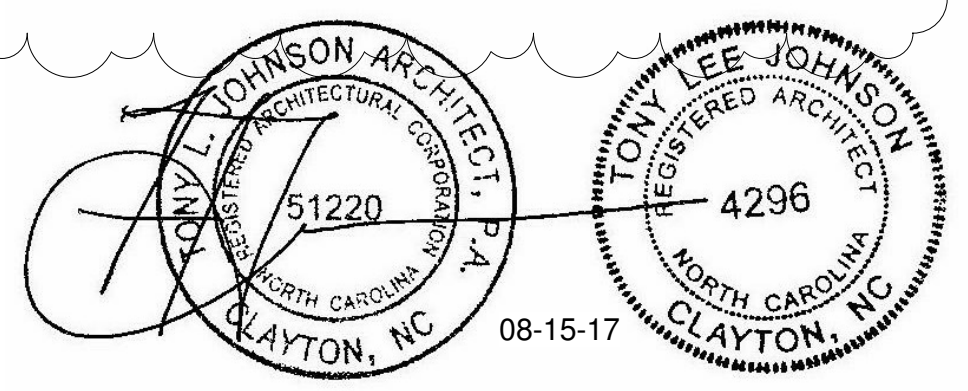
DOOR SCHEDULE										
Number	Width	Height	Door Material	Door Finish	Frame Material	Frame Finish	Hardware	Closer	Fire Rating	Comments
101a	(2) 3'-0"	7'-0"	GLASS, ALUMINUM	CLEAR FINISH	ALUMINUM	CLEAR FINISH	PUSH/PULL	YES		1'-0" TRANSOM
101b	12'-0"	9'-0"	GLASS, ALUMINUM OHD	CLEAR FINISH	ALUMINUM	CLEAR FINISH	NA	NA		FIELD VERIFY CLEARANCE
101c	3'-0"	7'-0"	INSULATED METAL HALF LITE	PAINT	METAL	PAINT	LEVER HANDLE	YES		PROVIDE THRESHOLD AND WEATHERSTRIPPING
101d	3'-0"	7'-0"	INSULATED METAL	PAINT	METAL	PAINT	LEVER HANDLE	YES		
102	3'-0"	7'-0"	SOLID CORE WOOD	STAIN	METAL	PAINT	LEVER HANDLE	NO		
103	3'-0"	7'-0"	SOLID CORE WOOD	STAIN	METAL	PAINT	LEVER HANDLE	NO		
104	3'-0"	7'-0"	SOLID CORE WOOD	STAIN	METAL	PAINT	LEVER HANDLE	NO		
105	3'-0"	7'-0"	SOLID CORE WOOD	STAIN	METAL	PAINT	LEVER HANDLE	NO		
106a	3'-0"	7'-0"	SOLID CORE WOOD	STAIN	METAL	PAINT	LEVER HANDLE	NO		
106b	3'-0"	7'-0"	SOLID CORE WOOD	STAIN	METAL	PAINT	LEVER HANDLE	YES	60 MIN	
107	3'-0"	7'-0"	INSULATED METAL	PAINT	METAL	PAINT	LEVER HANDLE	NO		PROVIDE THRESHOLD AND WEATHERSTRIPPING
108a	3'-0"	7'-0"	INSULATED METAL	PAINT	METAL	PAINT	LEVER HANDLE	YES		
108b	18'-0"	20'-0"	INSULATED METAL OHD	PAINT	METAL	PAINT	NA	NA		OVERHEAD DOOR
108c	3'-0"	7'-0"	INSULATED METAL	PAINT	METAL	PAINT	LEVER HANDLE	YES		
108d	18'-0"	20'-0"	INSULATED METAL OHD	PAINT	METAL	PAINT	NA	NA		OVERHEAD DOOR
109b	3'-0"	7'-0"	INSULATED METAL	PAINT	METAL	PAINT	LEVER HANDLE	YES	60 MIN	PROVIDE THRESHOLD AND WEATHERSTRIPPING
109c	3'-0"	7'-0"	INSULATED METAL	PAINT	METAL	PAINT	LEVER HANDLE	YES	60 MIN	PROVIDE THRESHOLD AND WEATHERSTRIPPING
109d	3'-0"	7'-0"	INSULATED METAL	PAINT	METAL	PAINT	LEVER HANDLE	YES		
201	3'-0"	7'-0"	SOLID CORE WOOD	STAIN	METAL	PAINT	LEVER HANDLE	YES	60 MIN	
202	3'-0"	7'-0"	SOLID CORE WOOD	STAIN	METAL	PAINT	LEVER HANDLE	NO		
203	3'-0"	7'-0"	SOLID CORE WOOD	STAIN	METAL	PAINT	LEVER HANDLE	NO		
204	3'-0"	7'-0"	SOLID CORE WOOD	STAIN	METAL	PAINT	LEVER HANDLE	NO		PROVIDE THRESHOLD AND WEATHERSTRIPPING



2 WALL SECTION 2
1/4" = 1'-0"

3 WALL SECTION 3
1/4" = 1'-0"

4 WALL SECTION 4
1/4" = 1'-0"



REVISIONS	
02.12.18	1
08.10.18	2



CAROLINA DIESEL TRUCKS

919-550-7717
TLJARCH@aol.com
2008 ELIZABETH COURT
CLAYTON, NC 27520
TONYJOHNSONARCHITECT.COM



DATE	08.15.17
SHEET	A-3