

SPECIFIC DIRECTIONS TO THE PROPERTY FROM LILLINGTON:

If permits are granted I agree to conform to all ordinances and laws of the State of North Carolina regulating such work and the specifications of plans submitted. I hereby state that foregoing statements are accurate and correct to the best of my knowledge. Permit subject to revocation if false information is provided.

Signature of Owner or Owner's Agent



Date

1/2/17

It is the owner/applicants responsibility to provide the county with any applicable information about the subject property, including but not limited to: boundary information, house location, underground or overhead easements, etc. The county or its employees are not responsible for any incorrect or missing information that is contained within these applications.

This application expires 6 months from the initial date if permits have not been issued

545.56'

Concrete Spillway

Boat Ramp

Pond

Pier

Island

Pier

771.96'

780'

240'

Porch

Shop
40' x 80'

90'

Porch

210'

200'

175'

Pool 20' x 40'

Deck 16' x 35'

Pool House 10' x 16'

House 36' x 36'

380'

190'

60'

125'

Driveway

30'

SITE PLAN APPROVAL

DISTRICT RABO USE SFD

#BEDROOMS 3

Date 7/8/14

[Signature]
Zoning Administrator

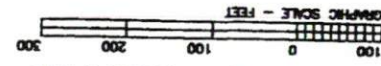
RECORDED MAP # 2015 - 342 HARNETT CO. REG. OF DEEDS



NOTICE TO THE PUBLIC: THIS MAP IS A PUBLIC RECORD AND IS AVAILABLE FOR INSPECTION AT THE REGISTER'S OFFICE...

PRESENT OWNERS: GARY WEATHERS
81 FLETCHER TUTOR ROAD
FLUJAY-WAYNE, NC 27526

BENTON W. DEWAR AND ASSOCIATES
PROFESSIONAL LAND SURVEYOR
6820 HONEYCUTT ROAD
HOLLY SPRINGS, NC 27540



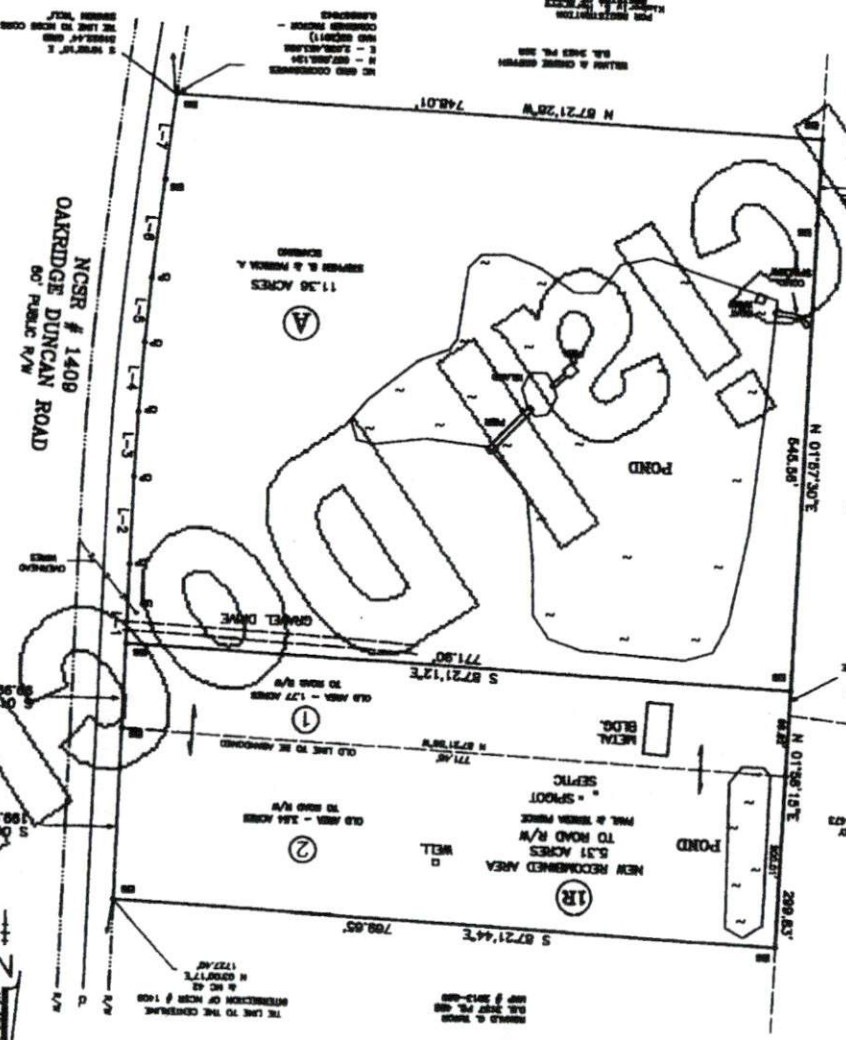
SCALE: 1" = 100' - OCTOBER 5, 2015
HARNETT COUNTY - NORTH CAROLINA
BUCKHORN TOWNSHIP

DEED BK. 2669 PG. 948
PIN # 0635-97-1817.000
DEED BK. 2669 PG. 963
PIN # 0635-97-172.000

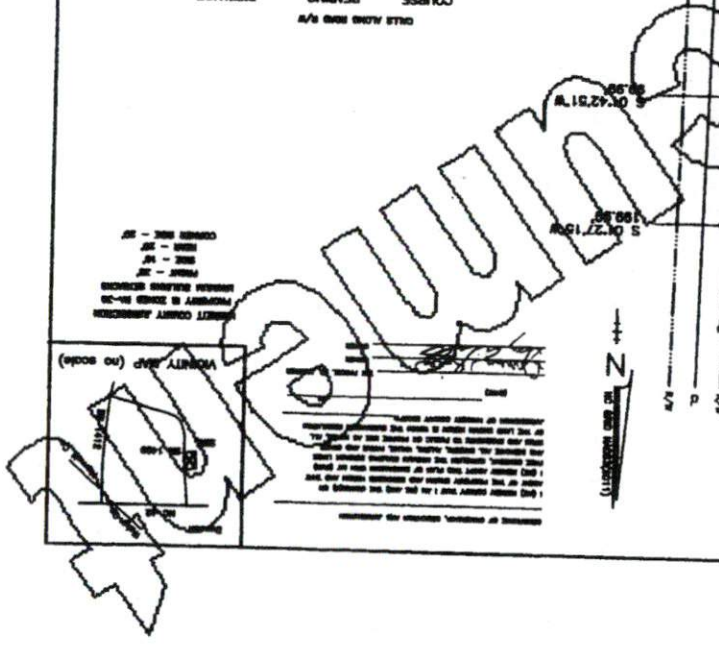
TRACT - A
DEED BK. 2853 PG. 479
PIN # 0635-97-1400.000

STEPHEN B. & PATRICIA A. SCARDINO
BOUNDARY & RECOMBINATION SURVEY FOR

| COURSE | DISTANCE |
|---------------|----------|
| S 01°06'56" W | 82.82 |
| S 01°06'56" W | 100.96 |
| S 01°06'56" W | 75.96 |
| S 01°06'56" W | 82.70 |
| S 01°06'56" W | 75.84 |
| S 01°06'56" W | 118.81 |
| S 01°06'56" W | 100.21 |



- 1 - CORNER COMMON TO TRACT A
- 2 - CORNER COMMON TO TRACT A
- 3 - CORNER COMMON TO TRACT A
- 4 - CORNER COMMON TO TRACT A
- 5 - CORNER COMMON TO TRACT A
- 6 - CORNER COMMON TO TRACT A
- 7 - CORNER COMMON TO TRACT A
- 8 - CORNER COMMON TO TRACT A
- 9 - CORNER COMMON TO TRACT A
- 10 - CORNER COMMON TO TRACT A
- 11 - CORNER COMMON TO TRACT A
- 12 - CORNER COMMON TO TRACT A
- 13 - CORNER COMMON TO TRACT A
- 14 - CORNER COMMON TO TRACT A
- 15 - CORNER COMMON TO TRACT A
- 16 - CORNER COMMON TO TRACT A
- 17 - CORNER COMMON TO TRACT A
- 18 - CORNER COMMON TO TRACT A
- 19 - CORNER COMMON TO TRACT A
- 20 - CORNER COMMON TO TRACT A
- 21 - CORNER COMMON TO TRACT A
- 22 - CORNER COMMON TO TRACT A
- 23 - CORNER COMMON TO TRACT A
- 24 - CORNER COMMON TO TRACT A
- 25 - CORNER COMMON TO TRACT A
- 26 - CORNER COMMON TO TRACT A
- 27 - CORNER COMMON TO TRACT A
- 28 - CORNER COMMON TO TRACT A
- 29 - CORNER COMMON TO TRACT A
- 30 - CORNER COMMON TO TRACT A
- 31 - CORNER COMMON TO TRACT A
- 32 - CORNER COMMON TO TRACT A
- 33 - CORNER COMMON TO TRACT A
- 34 - CORNER COMMON TO TRACT A
- 35 - CORNER COMMON TO TRACT A
- 36 - CORNER COMMON TO TRACT A
- 37 - CORNER COMMON TO TRACT A
- 38 - CORNER COMMON TO TRACT A
- 39 - CORNER COMMON TO TRACT A
- 40 - CORNER COMMON TO TRACT A
- 41 - CORNER COMMON TO TRACT A
- 42 - CORNER COMMON TO TRACT A
- 43 - CORNER COMMON TO TRACT A
- 44 - CORNER COMMON TO TRACT A
- 45 - CORNER COMMON TO TRACT A
- 46 - CORNER COMMON TO TRACT A
- 47 - CORNER COMMON TO TRACT A
- 48 - CORNER COMMON TO TRACT A
- 49 - CORNER COMMON TO TRACT A
- 50 - CORNER COMMON TO TRACT A
- 51 - CORNER COMMON TO TRACT A
- 52 - CORNER COMMON TO TRACT A
- 53 - CORNER COMMON TO TRACT A
- 54 - CORNER COMMON TO TRACT A
- 55 - CORNER COMMON TO TRACT A
- 56 - CORNER COMMON TO TRACT A
- 57 - CORNER COMMON TO TRACT A
- 58 - CORNER COMMON TO TRACT A
- 59 - CORNER COMMON TO TRACT A
- 60 - CORNER COMMON TO TRACT A
- 61 - CORNER COMMON TO TRACT A
- 62 - CORNER COMMON TO TRACT A
- 63 - CORNER COMMON TO TRACT A
- 64 - CORNER COMMON TO TRACT A
- 65 - CORNER COMMON TO TRACT A
- 66 - CORNER COMMON TO TRACT A
- 67 - CORNER COMMON TO TRACT A
- 68 - CORNER COMMON TO TRACT A
- 69 - CORNER COMMON TO TRACT A
- 70 - CORNER COMMON TO TRACT A
- 71 - CORNER COMMON TO TRACT A
- 72 - CORNER COMMON TO TRACT A
- 73 - CORNER COMMON TO TRACT A
- 74 - CORNER COMMON TO TRACT A
- 75 - CORNER COMMON TO TRACT A
- 76 - CORNER COMMON TO TRACT A
- 77 - CORNER COMMON TO TRACT A
- 78 - CORNER COMMON TO TRACT A
- 79 - CORNER COMMON TO TRACT A
- 80 - CORNER COMMON TO TRACT A
- 81 - CORNER COMMON TO TRACT A
- 82 - CORNER COMMON TO TRACT A
- 83 - CORNER COMMON TO TRACT A
- 84 - CORNER COMMON TO TRACT A
- 85 - CORNER COMMON TO TRACT A
- 86 - CORNER COMMON TO TRACT A
- 87 - CORNER COMMON TO TRACT A
- 88 - CORNER COMMON TO TRACT A
- 89 - CORNER COMMON TO TRACT A
- 90 - CORNER COMMON TO TRACT A
- 91 - CORNER COMMON TO TRACT A
- 92 - CORNER COMMON TO TRACT A
- 93 - CORNER COMMON TO TRACT A
- 94 - CORNER COMMON TO TRACT A
- 95 - CORNER COMMON TO TRACT A
- 96 - CORNER COMMON TO TRACT A
- 97 - CORNER COMMON TO TRACT A
- 98 - CORNER COMMON TO TRACT A
- 99 - CORNER COMMON TO TRACT A
- 100 - CORNER COMMON TO TRACT A



Harnett County Central Permitting

PO Box 65 Lillington, NC 27546 - Ph: 910-893-7525 - Fx: 910-893-2793 - www.harnett.org/permits

Certification of Work Performed By Owner/Contractor
(Individual Trade Application)

Owner (s) of Structure: STEVE & PATTY SARDINO Phone: 919-539-9423

Owner (s) Mailing Address: 1591 OAKBROOK DUNCAN RD.
FAIRWAY-VARINA, NC 27526

Land Owner Name (s): _____ Phone: _____

Construction or Site Address: _____

PIN # _____ Parcel # _____

Job Cost: _____ Description of Work to be done ELECTRICAL FOR
SWIMMING POOL

Mechanical: New Unit With Ductwork ___ New Unit Without Ductwork ___ Gas Piping ___ Other ___

Electrical*: 200 Amp ___ <200 Amp ___ Service Change ___ Service Reconnect ___ Other ___
* For Progress Energy customers we need the premise number

Plumbing: Water/Sewer Tap ___ Number of Baths ___ Water Heater ___

Specific Directions to Job from Lillington:

Subdivision: _____ Lot #: _____

I Scott Jansen will provide the ELECTRICAL labor on this structure.
(Contractors Name) (Trade)

I am the building owner or my NC state license number is 23596-L, which entitles me to perform such work on the above structure legally. All work shall comply with the State Building Code and all other applicable State and local laws, ordinances and regulations.

Jansen's ELECTRICAL SERVICE
Contractor's Company Name

919-915-3047
Telephone

WENDELL NC 27591
Address

Email Address

23596-L
License #

Structure Owner / Contractor Signature:  Date: 1/4/17

By signing this application you affirm that you have obtained permission from the above listed license holder to purchase permits on their behalf. If doing the work as owner you understand that you cannot rent, lease or sell the listed property for 12 months after completion of the listed work.

*Company name, address, & phone must match information on license