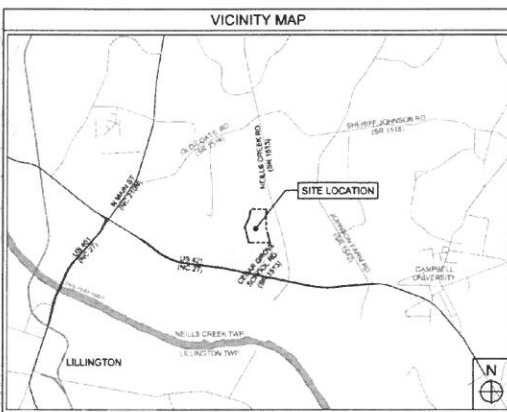


Drainage Area No.	Drainage Area (Ac)	Runoff Coefficient	Rainfall Intensity (in/hr)	Peak Flow, Q <sub>p</sub> (cfs)	Required Volume (ft <sup>3</sup> )	Required Surface Area (ft <sup>2</sup> )	Top Width (ft)	Top Length (ft)	Proposed Depth (ft)	Proposed Bottom Width (ft)	Proposed Bottom Length (ft)	Proposed Side Slope	Proposed Volume (ft <sup>3</sup> )	Proposed Surface Area (ft <sup>2</sup> )	Proposed Wet Length (ft)	Depth Over Weir (ft)	Emergency Spillway, Q <sub>s</sub> (cfs)	Skimmer Size (ft)	Head of Skimmer (ft)	Proposed Orifice Size (ft)	Proposed Dewatering Time (Days)
SK-1A	8.0	0.50	7.80	31.2	14,400	10,159	75	150	2.5	60	135	3	24,094	11,250	40	0.5	42.4	2.5	0.208	2.1	3
SK-1B	8.0	0.50	7.80	31.2	14,400	10,159	75	150	2.5	60	135	3	24,094	11,250	40	0.5	42.4	2.5	0.208	2.1	3
SK-2A	6.5	0.50	7.80	25.4	11,700	8,254	65	130	2.5	50	115	3	17,656	8,450	30	0.5	31.8	2.5	0.208	1.9	3
SK-2B	6.5	0.50	7.80	25.4	11,700	8,254	65	130	2.5	50	115	3	17,656	8,450	30	0.5	31.8	2.5	0.208	1.9	3
SK-3	3.8	0.50	7.80	14.6	6,640	4,825	50	200	2.5	35	85	3	9,875	5,000	30	0.5	31.8	2.0	0.167	1.5	3
SK-4	7.8	0.50	7.80	30.4	14,340	9,955	71	142	2.5	56	127	3	21,399	10,062	30	0.5	37.1	2.5	0.208	2.1	3

Drainage Area No.	Drainage Area (Ac)	Runoff Coefficient	Rainfall Intensity (in/hr)	Peak Flow, Q <sub>p</sub> (cfs)	Peak Flow, Q <sub>p</sub> (gpm)	Length of Sock (ft)	Average Slope (%)	Length of Compost Sock (ft)	Hydraulic Flow Through Rate (gpm/ft)	Proposed Diameter of Sock (in)	Proposed Hydraulic Flow Through Rate (gpm/ft)	
DA-5	6.1	0.5	7.80	23.6	10,578	6	700	0.9	520	20.5	36	30.0

Diversion Ditch Location	Drainage Area (Ac)	Runoff Coefficient	Rainfall Intensity (in/hr)	Peak Flow, Q <sub>p</sub> (cfs)	Channel Length (ft)	Change in Elevation (ft)	Slope (ft/ft)	Channel Bottom Width, B (ft)	Channel Side Slope, Z (ft)	Channel Depth, d (ft)	Critical Depth (ft)	Channel Area, A <sub>c</sub> (ft <sup>2</sup> )	Wetted Perimeter, P (ft)	Hydraulic Radius, R (ft)	Manning's Roughness, n	Shear Stress, T (lb/ft <sup>2</sup> )	Full Flow Velocity, V <sub>ff</sub> (ft/s)	Channel Capacity (ft <sup>3</sup> /s)	Temporary Liner
DA-1AN	5.00	0.5	7.80	19.50	740	14	0.0389	0	3	1.5	1.21	6.8	9.40	0.71	0.022	1.77	7.40	49.98	NAG Eronet P300 Liner
DA-1AS	2.00	0.5	7.80	7.80	70	2	0.0386	0	3	1.1	0.84	3.6	6.96	0.52	0.022	1.96	7.40	26.86	NAG Eronet P300 Liner
DA-1B	3.00	0.5	7.80	11.70	125	3	0.0240	0	3	1.2	0.99	4.3	7.59	0.57	0.022	1.80	7.19	31.05	NAG Eronet P300 Liner
DA-2	3.00	0.5	7.80	11.70	285	8	0.0281	0	3	1.2	0.99	4.3	7.59	0.57	0.022	2.10	7.77	33.58	NAG Eronet P300 Liner
DA-3N	1.00	0.5	7.80	3.90	205	2	0.0390	0	3	0.9	0.64	2.4	5.69	0.43	0.022	1.07	5.29	12.84	NAG Eronet P300 Liner
DA-3S	2.00	0.5	7.80	7.80	310	4	0.0398	0	3	1.1	0.96	3.6	6.96	0.52	0.022	0.74	4.55	16.52	NAG Eronet P300 Liner
DA-4	3.00	0.5	7.80	11.70	590	15	0.0273	0	3	1.2	0.99	4.3	7.59	0.57	0.022	2.04	7.66	33.10	NAG Eronet P300 Liner



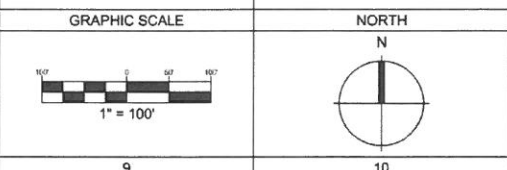
SCALE 1" = 5000'  
FOR DESIGN NOTES - SEE SHEET C2

- GENERAL NOTES
- CONSTRUCTION SEQUENCE NOTES
- TEMPORARY MEASURE REMOVAL/PERMANENT RESTORATION
- CONSTRUCTION SPECIFICATIONS
- NOTIFICATION OF COMBINED SELF MONITORING AND SELF INSPECTION FORM
- TREE PROTECTION NOTES
- GROUND COVER REQUIREMENTS FOR SLOPE CONDITIONS
- FINE GRADING AND SEEDING NOTES
- TEMPORARY SEEDING NOTES
- PERMANENT SEEDING NOTES
- SPECIFICATION SHEET - NAG ERONET® P300 PERMANENT EROSION CONTROL BLANKET
- TEMPORARY STOCKPILE CROSS SECTION DETAIL
- ABOVE GRADE CONCRETE WASHOUT STRUCTURE DETAIL

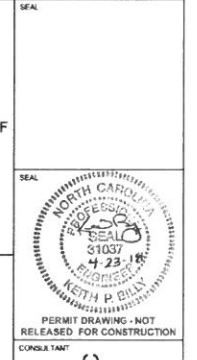
**SAFETY NOTE:**  
CONTRACTOR SHALL BE SOLELY RESPONSIBLE FOR INITIATING, MAINTAINING AND SUPERVISING ALL SAFETY PRECAUTIONS AND PROGRAMS IN CONNECTION WITH THE WORK. CONTRACTOR SHALL COMPLY WITH ALL APPLICABLE LAWS AND REGULATIONS RELATING TO THE SAFETY OF PERSONS OR PROPERTY OR TO THE PROTECTION OF PERSONS OR PROPERTY FROM DAMAGE, INJURY, OR LOSS AND SHALL ERRECT AND MAINTAIN ALL NECESSARY SAFEGUARDS FOR SLUSH SAFETY AND PROTECTION.

**OVERALL LIMIT OF DISTURBANCE= 47.2 ACRES**

EXISTING CONDITIONS	PROPOSED CONDITIONS
BUILDING SETBACK	DRAINAGE AREA
OVERHEAD ELECTRICAL	LIMIT OF DISTURBANCE
TREELINE	POROUS BAFFLE
MAJOR CONTOURS	SILT FENCE WITH OUTLET
MINOR CONTOURS	DIVERSION DITCH
PROPERTY BOUNDARY	TREELINE
PROPERTY (ADJOINER)	CHECK DAM
RIGHT-OF-WAY	INLET PROTECTION
STREET CENTERLINE	OUTLET PROTECTION
JURISDICTIONAL WETLAND	RCP PIPE
DITCH/STREAM	COMPOST SOCK
TOP OF BANK	STOCKPILE
EASEMENT/BUFFER OFFSET	EMERGENCY SPILLWAY LINER
	MAJOR CONTOURS
	MINOR CONTOURS



**CYPRESS CREEK**  
RENEWABLES  
3050 OCEAN PARK BLVD., SUITE 555 :: SANTA MONICA, CA 90405  
445 BUSH ST. :: 8TH FLOOR :: SAN FRANCISCO, CA 94108  
770 1ST :: SUITE 950 :: SACRAMENTO, CA 95814  
5110 SOUTH ALSTON AVE. :: BLDG 300 :: DURHAM, NC 27713  
150 ROBERTS ST. :: ASHEVILLE, NC 28801



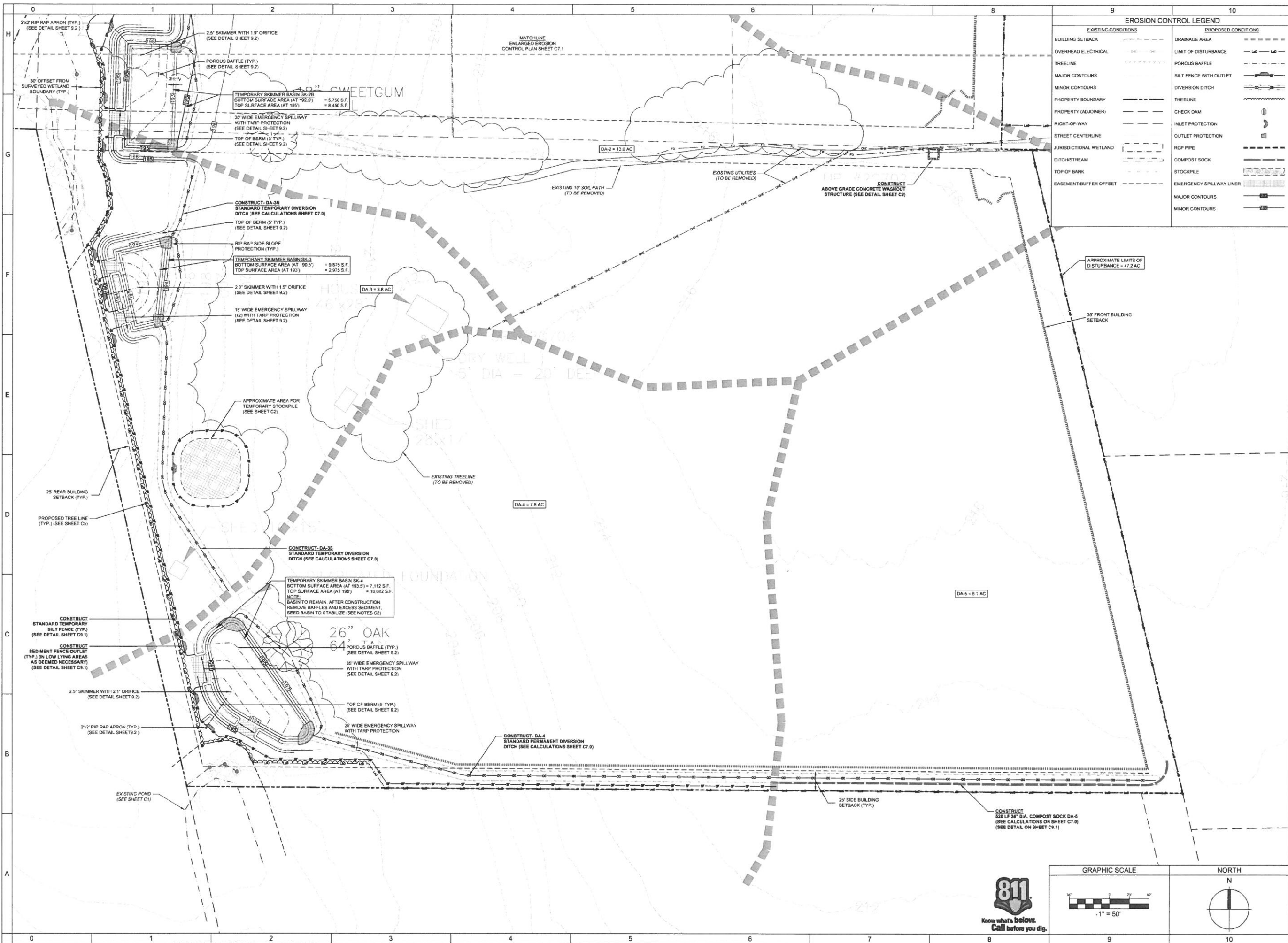
**CYPRESS CREEK EPC, LLC**  
5310 SOUTH ALSTON AVE., BLDG. 300  
DURHAM, NC 27713  
(919) 240-4815 NC LICENSE: D-0388

NO.	DATE	DESCRIPTION
1	10/27/17	ISSUE FOR PERMIT
2	10/27/17	ISSUE FOR PERMIT
3	10/27/17	ISSUE FOR PERMIT

**CLOVELLY SOLAR, LLC**  
NEILLS CREEK ROAD  
NEILLS CREEK TOWNSHIP,  
HARNETT COUNTY, NC

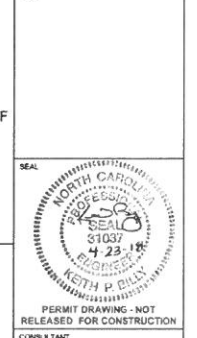
DATE: 7/24/17  
DRAWN BY: WRB  
CHECKED BY: KPB  
EROSION CONTROL PLAN  
**C7.0**





EROSION CONTROL LEGEND	
EXISTING CONDITIONS	PROPOSED CONDITIONS
BUILDING SETBACK	DRAINAGE AREA
OVERHEAD ELECTRICAL	LIMIT OF DISTURBANCE
TREELINE	POROUS BAFFLE
MAJOR CONTOURS	SILT FENCE WITH OUTLET
MINOR CONTOURS	DIVERSION DITCH
PROPERTY BOUNDARY	TREELINE
PROPERTY (ADJOINER)	CHECK DAM
RIGHT-OF-WAY	INLET PROTECTION
STREET CENTERLINE	OUTLET PROTECTION
JURISDICTIONAL WETLAND	RCP PIPE
DITCH/STREAM	COMPOST SOCK
TOP OF BANK	STOCKPILE
EASEMENT/BUFFER OFFSET	EMERGENCY SPILLWAY LINER
	MAJOR CONTOURS
	MINOR CONTOURS

**CYPRESS CREEK RENEWABLES**  
 3250 OCEAN PARK BLVD., SUITE 355, SANTA MONICA, CA 90405  
 445 BUSH ST., 8TH FLOOR, SAN FRANCISCO, CA 94108  
 770 LT., SUITE 950, SACRAMENTO, CA 95814  
 5310 SOUTHALSTON AVE., BLDG 300, DURHAM, NC 27713  
 150 ROBERTS ST., ASHEVILLE, NC 28801



**CYPRESS CREEK EPC, LLC**  
 5310 SOUTHALSTON AVE., BLDG. 300  
 5310 SOUTHALSTON AVE., DURHAM, NC 27713  
 (919) 240-4815 NC LICENSE D-03883

NO.	DATE	DESCRIPTION
1	7/24/17	ADDITIONAL DIVERSIONS PROVIDED PER AGRICULTURAL DISTRICT BY77
2	8/28/18	REVISIONS TO PERMIT DRAWING AND HARNETT COUNTY PERMITS TO ADD FURTHER UTILITY
3	8/28/18	PER HARNETT COUNTY COMMENTS DATED 8/18/18

**CLOVELLY SOLAR, LLC**  
 NEILLS CREEK ROAD  
 NEILLS CREEK TOWNSHIP,  
 HARNETT COUNTY, NC

DATE	7/24/17
DRAWN BY	WRB
CHECKED BY	KPB
EROSION CONTROL PLAN (SH. 2 OF 2)	
<b>C7.2</b>	

