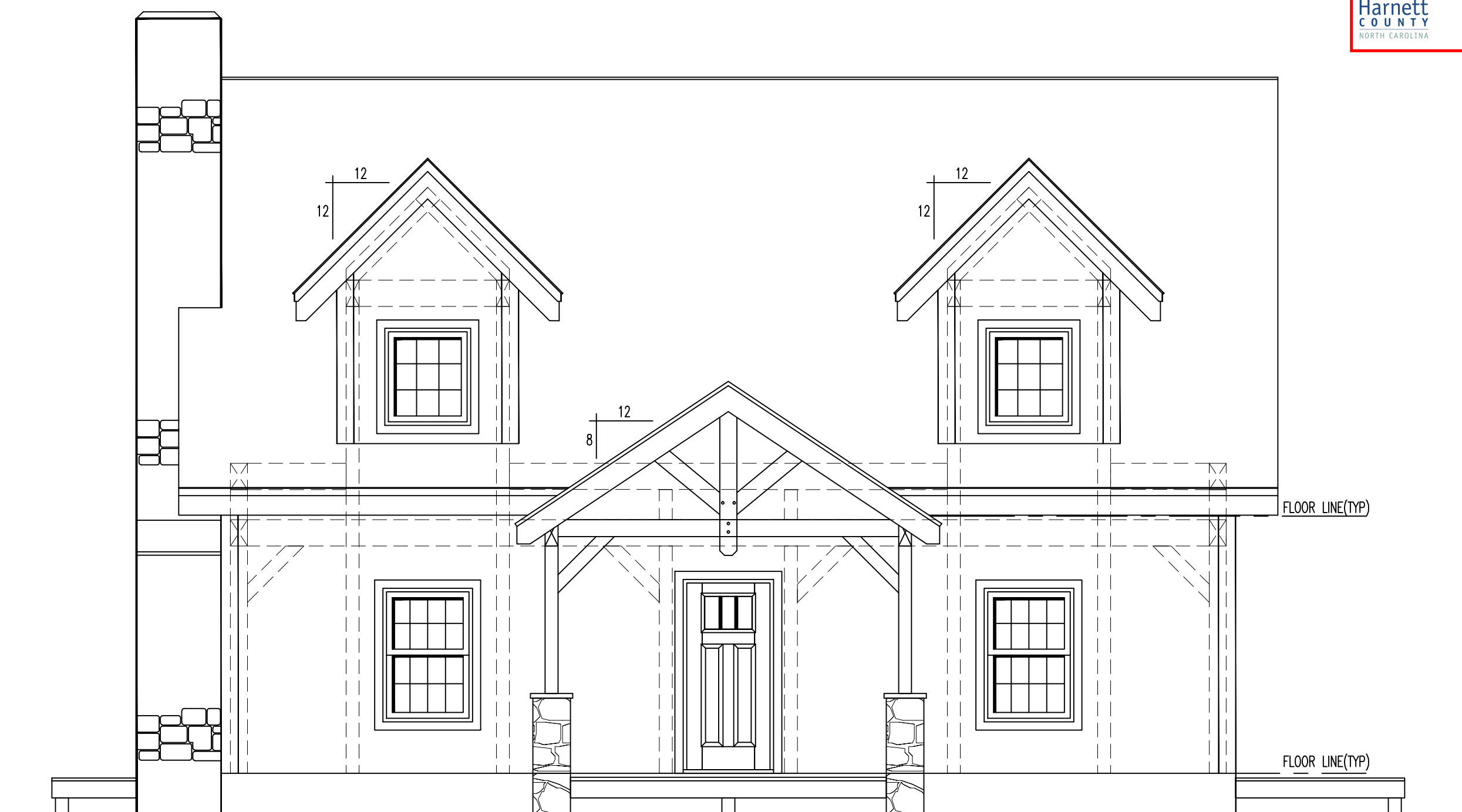
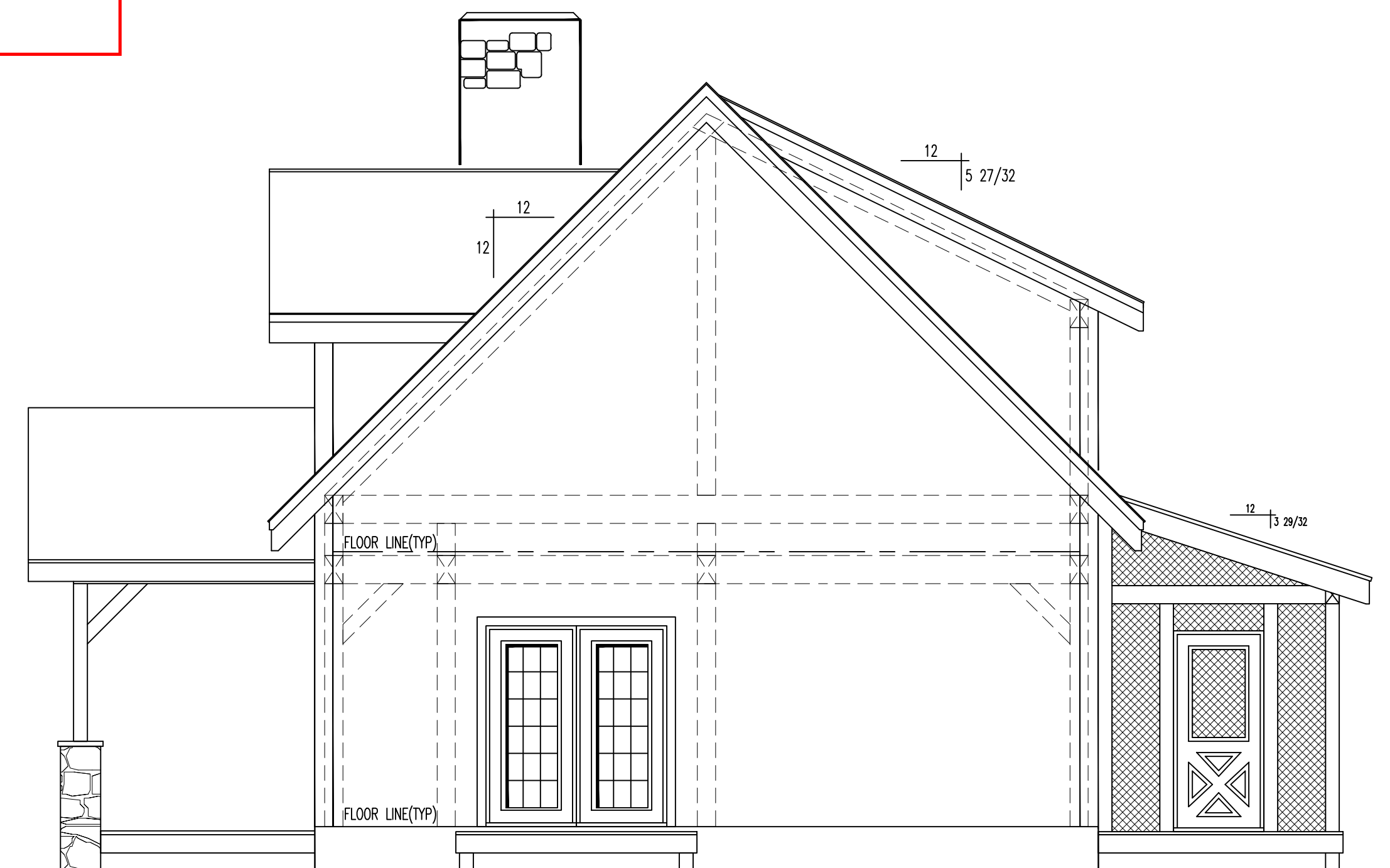


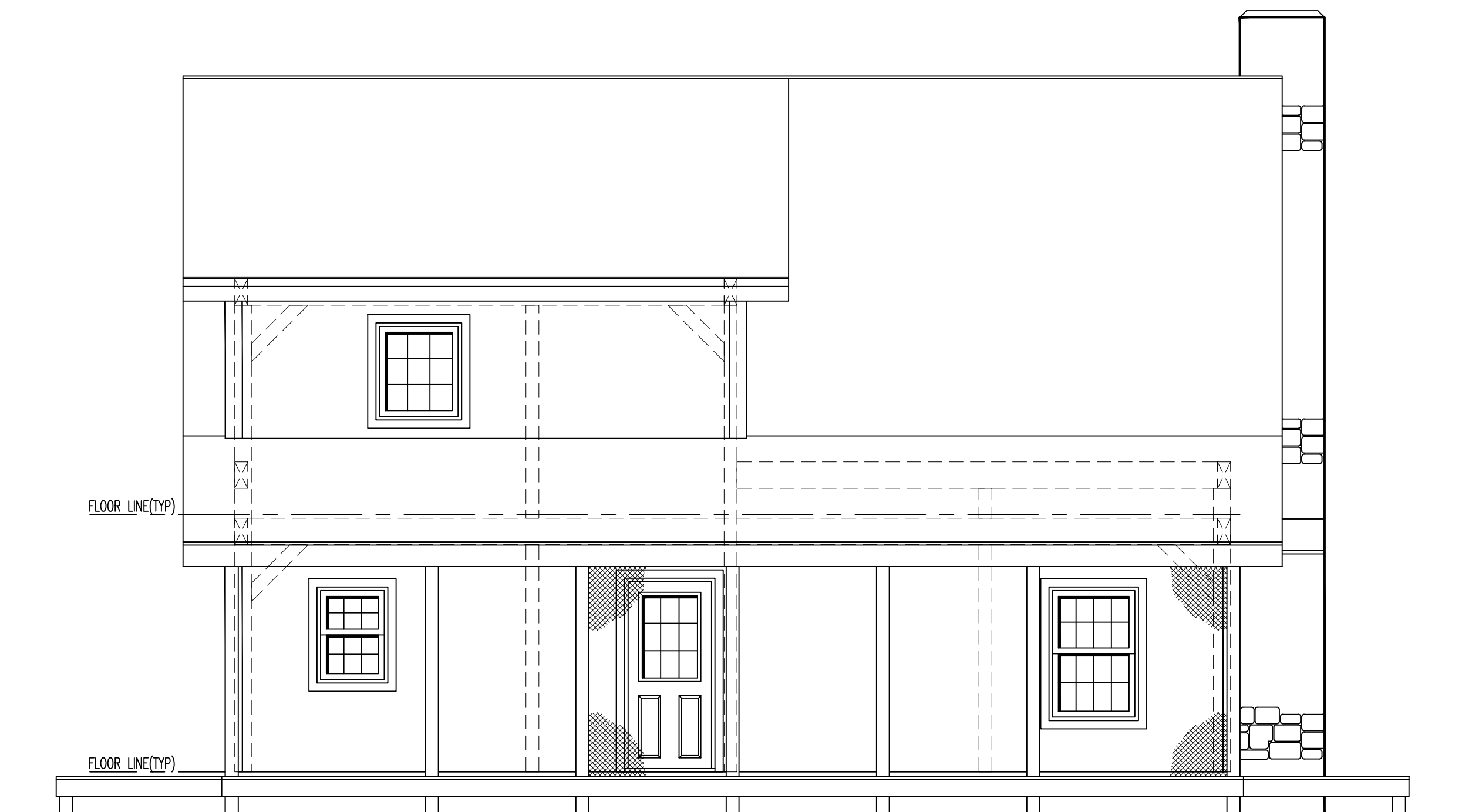
Harnett COUNTY NORTH CAROLINA  
**Approved**  
 Issued 10/05/2018



**FRONT ELEVATION**



**RIGHT ELEVATION**



**REAR ELEVATION**

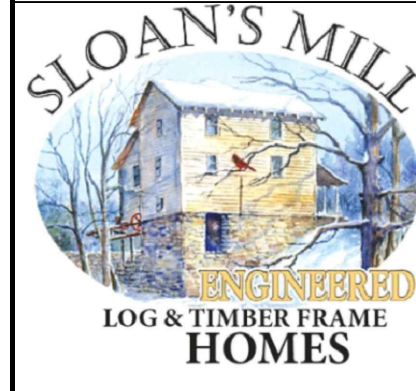


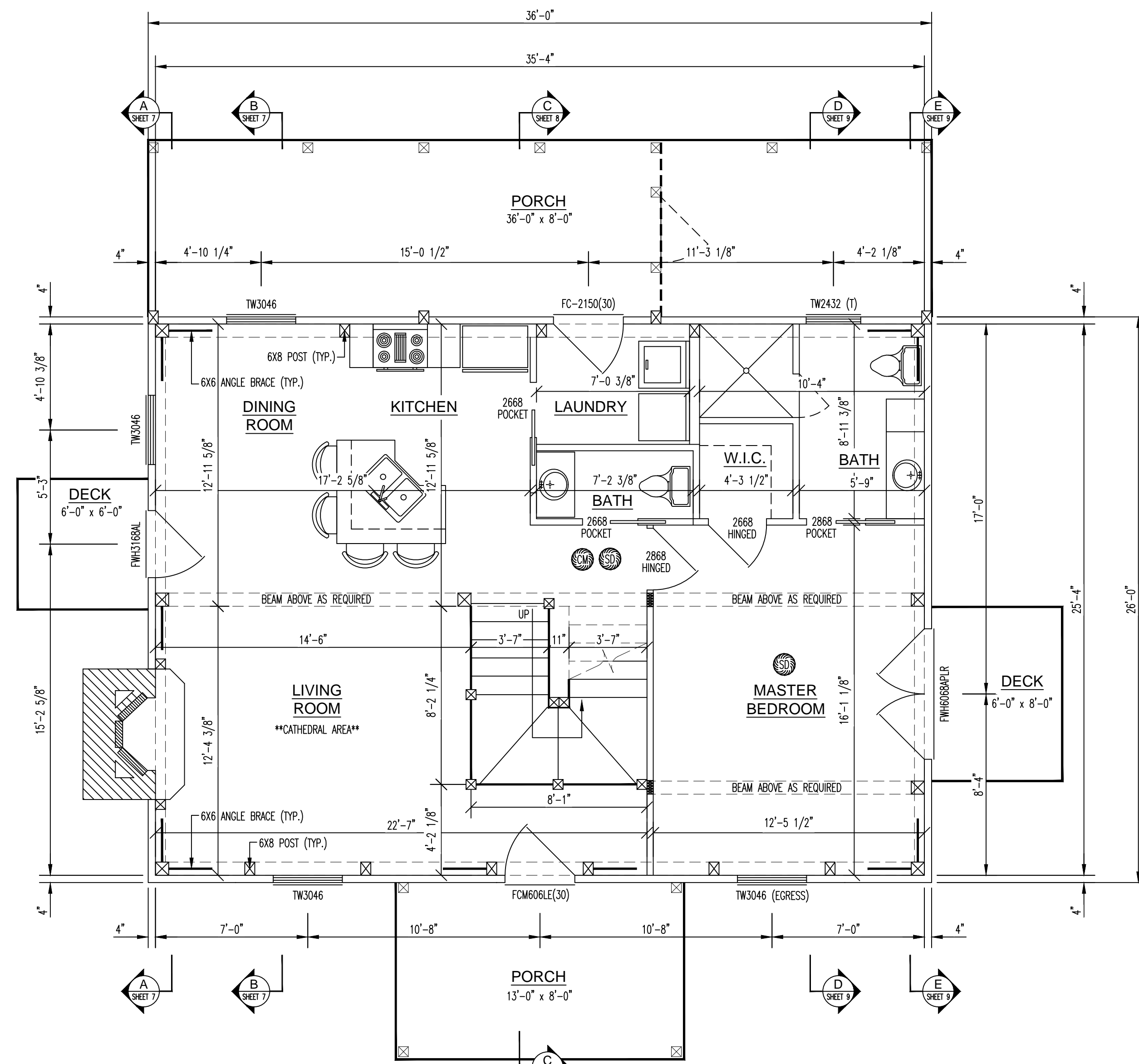
**LEFT ELEVATION**

*Michael P. Herman*  
 10-2-18



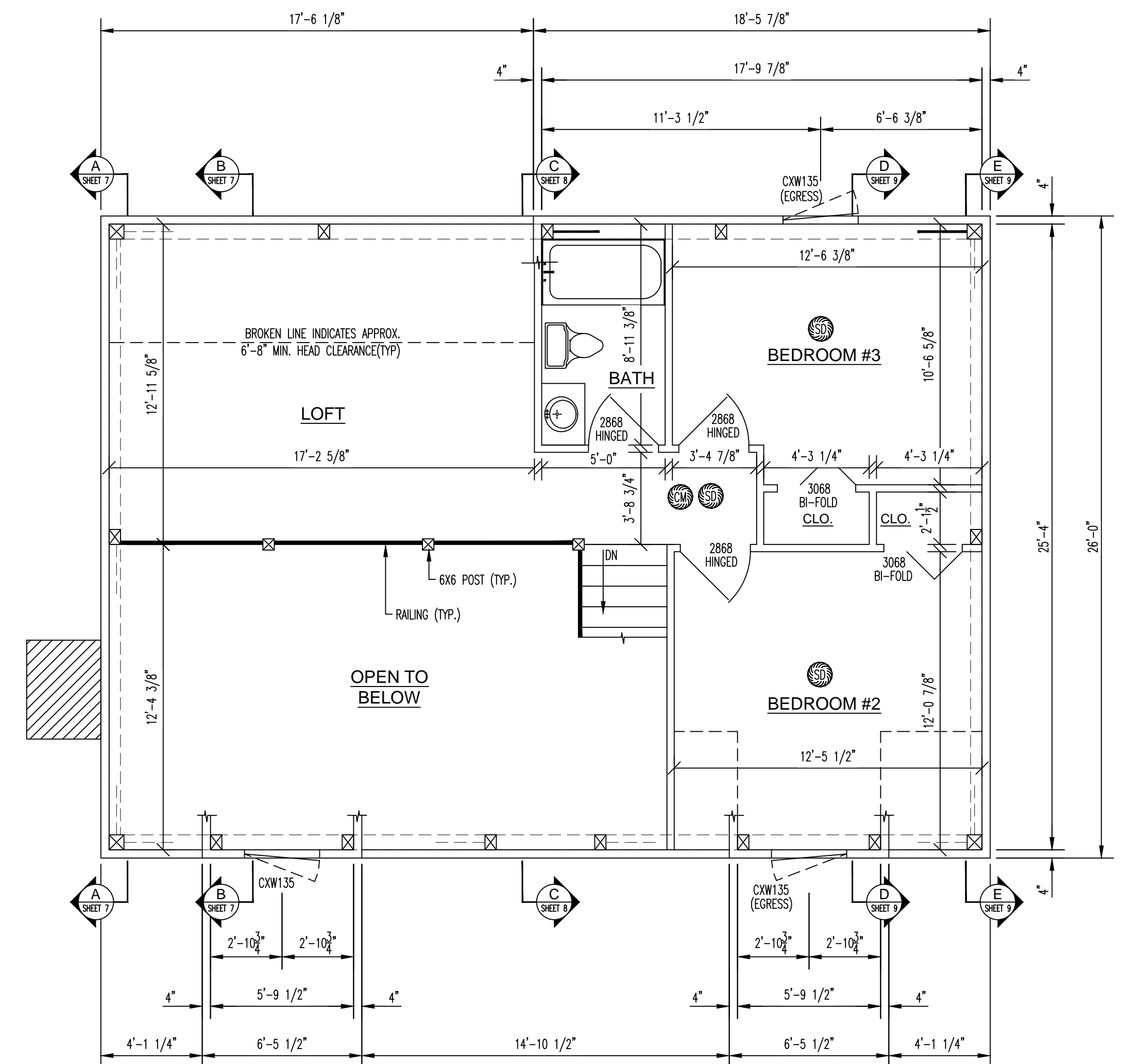
<b>DO NOT SCALE DRAWING</b> -CONTRACTOR TO VERIFY ALL DIMENSIONS IN FIELD		
RESIDENCE FOR: <b>SLOANS MILL - HAGGERTY</b>		
PLAN NAME: <b>ELEVATIONS</b>		
PRELIMINARY DATES: 8-23-18	FINAL PRELIM. DATES: ----	FINAL DATES: ----
DRAWN BY: WRZ/DWG	DRAWN BY: ----	DRAWN BY: ----
FINAL REV. DATES: ----	MODEL: CUSTOM	SCALE: 1/4" = 1'-0"
DRAWN BY: ----	PROJ. NO. ----	DWG. NO. ----
SALES REP: / DEALER: TLH		SHEET NO. 1 OF 3





**1st LEVEL FLOOR PLAN**

TOTAL FLOOR SPACE = 936 SQ. FT.



**2nd LEVEL FLOOR PLAN**

TOTAL FLOOR SPACE = 645 SQ. FT.

**WINDOW & DOOR SCHEDULE**

MODEL #	QTY	ROUGH OPENING	DESCRIPTION	COMMENTS
FWH3168AL	1	3'-1" x 6'-8"	ANDERSEN FRENCHWOOD HINGED PATIO DOOR	BY OTHERS
FWH6068APLR	1	6'-0" x 6'-8"	ANDERSEN FRENCHWOOD HINGED PATIO DOOR	BY OTHERS
FC-2150(30)	1	3'-2 1/2" x 6'-10 1/2"	THERMA-TRU FIBER-CLASSIC ENTRY DOOR	BY OTHERS
FCM606LE(30)	1	3'-2 1/2" x 6'-10 1/2"	THERMA-TRU FIBER-CLASSIC MAHOGANY ENTRY DOOR	BY OTHERS
TW2432 (T)	1	2'-6 1/8" x 3'-4 7/8"	ANDERSEN DOUBLE-HUNG WINDOW (TEMPERED)	BY OTHERS
TW3046	4	3'-2 1/8" x 4'-8 7/8"	ANDERSEN DOUBLE-HUNG WINDOW	BY OTHERS
CXW135	3	3'-0 1/2" x 3'-5 3/8"	ANDERSEN CASEMENT WINDOW (EGRESS HARDWARE REQ'D)	BY OTHERS
2668	1	2'-8" x 6'-10"	RAISED PANEL WHITE PINE HINGED DOOR	BY OTHERS
2668	4	2'-10" x 6'-10"	RAISED PANEL WHITE PINE HINGED DOOR	BY OTHERS
2668	2	SEE POCKET DOOR FRAME R.O.	RAISED PANEL WHITE PINE POCKET DOOR	BY OTHERS
2668	2	5'-1" x 7'-0 1/2"	POCKET DOOR FRAME AND HARDWARE	BY OTHERS
2668	1	SEE POCKET DOOR FRAME R.O.	RAISED PANEL WHITE PINE POCKET DOOR	BY OTHERS
2668	1	5'-5" x 7'-0 1/2"	POCKET DOOR FRAME AND HARDWARE	BY OTHERS
3068	2	3'-2" x 6'-10"	RAISED PANEL WHITE PINE BI-FOLD DOOR	BY OTHERS

**WINDOW/DOOR FRAMING**

LOCATE THE FOLLOWING NUMBER OF FULL HEIGHT STUDS BESIDE JACK STUDS @ EACH END OF OPENINGS IN FRAMED WALLS  
 - (3) THREE AT DOUBLE DOOR  
 - (2) TWO AT SINGLE DOORS AND WINDOWS

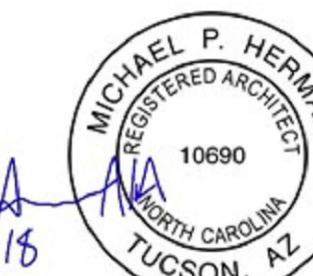
**SMOKE DETECTION SYSTEM**

SMOKE DETECTORS SHALL BE INTERCONNECTED IN SUCH A MANNER THAT THE ACTUATION OF ONE ALARM WILL ACTIVATE ALL OF THE ALARMS. SMOKE DETECTORS SHALL RECEIVE THEIR PRIMARY POWER FROM THE BUILDING WIRING, AND WHEN PRIMARY POWER IS INTERRUPTED, SHALL RECEIVE POWER FROM A BATTERY. WIRING SHALL BE PERMANENT AND WITHOUT A DISCONNECTION SWITCH OTHER THAN THOSE REQUIRED FOR OVER-CURRENT PROTECTION.

**CARBON MONOXIDE SYSTEM**

SINGLE STATION CARBON MONOXIDE ALARMS SHALL BE LISTED AS COMPLYING WITH UL 2034.

*Michael P. Herman*  
10-2-15

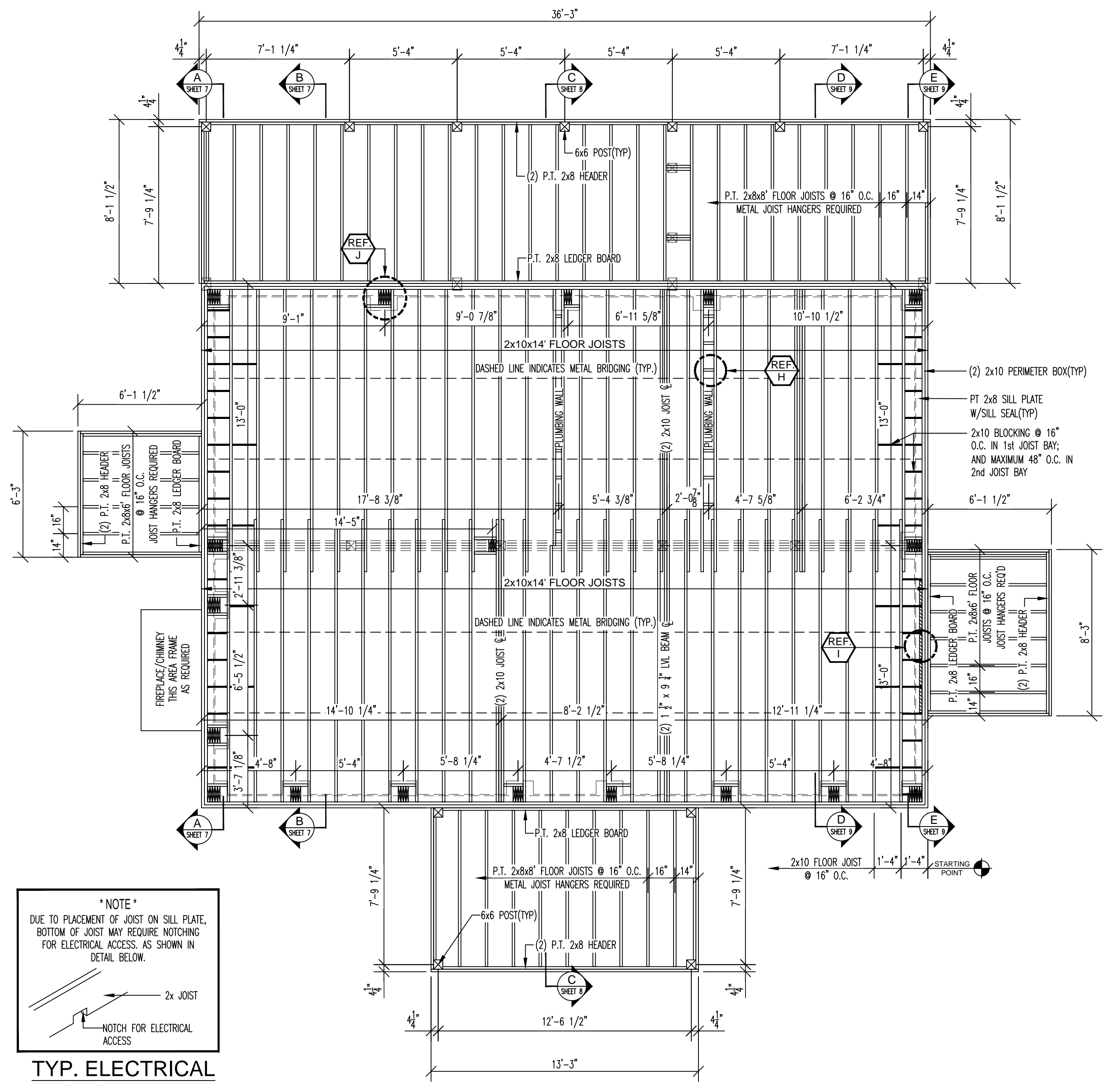
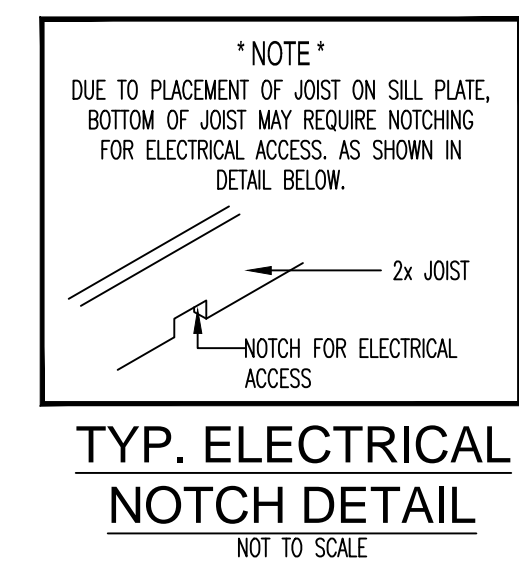
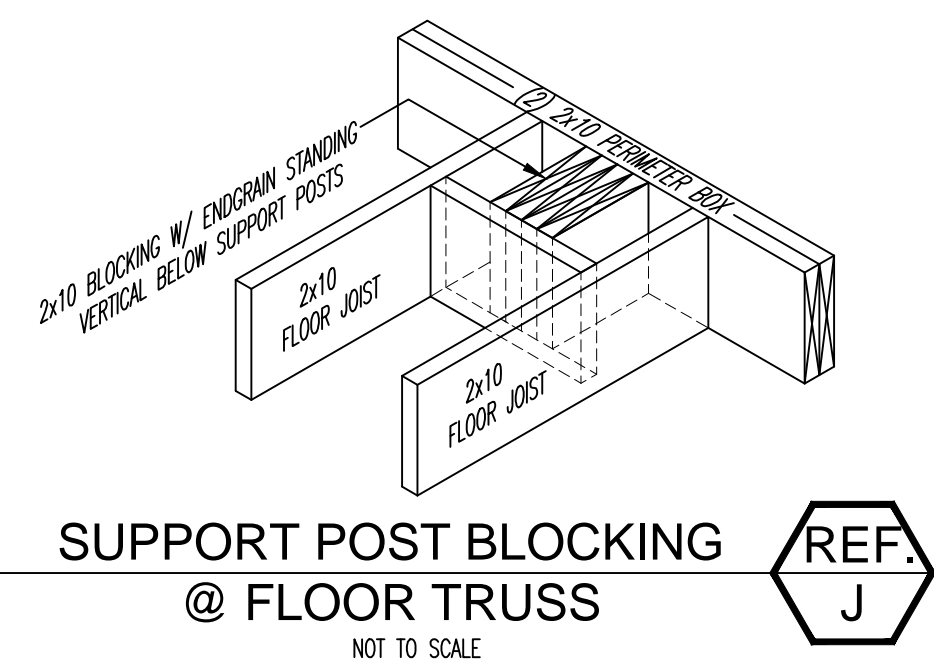
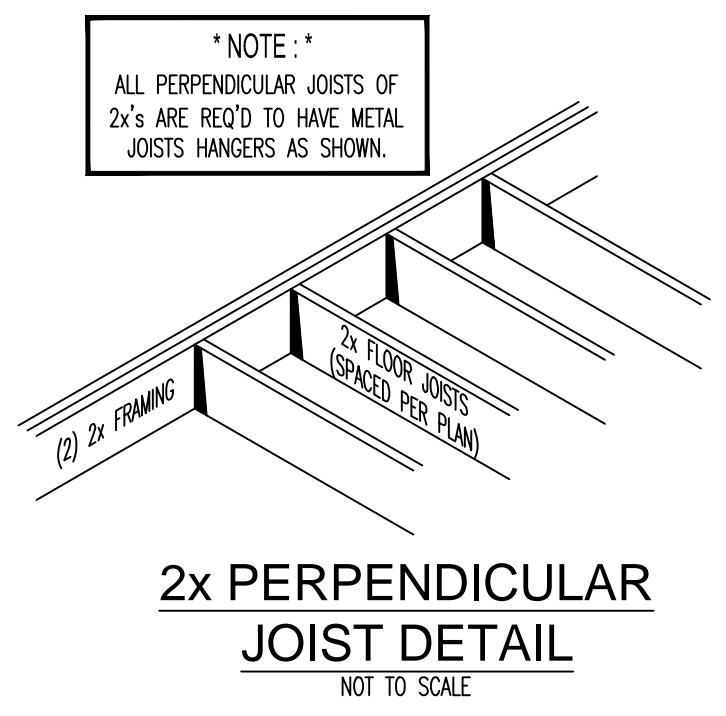
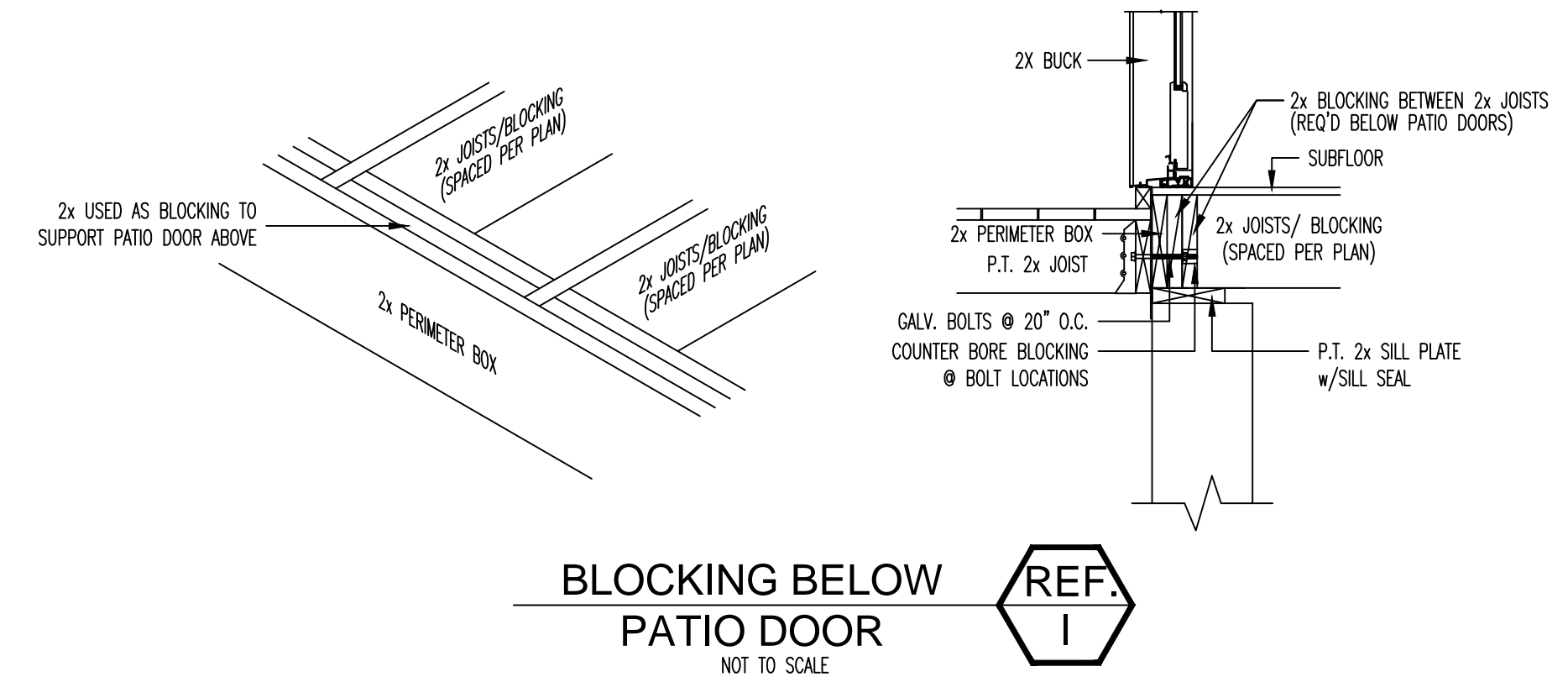
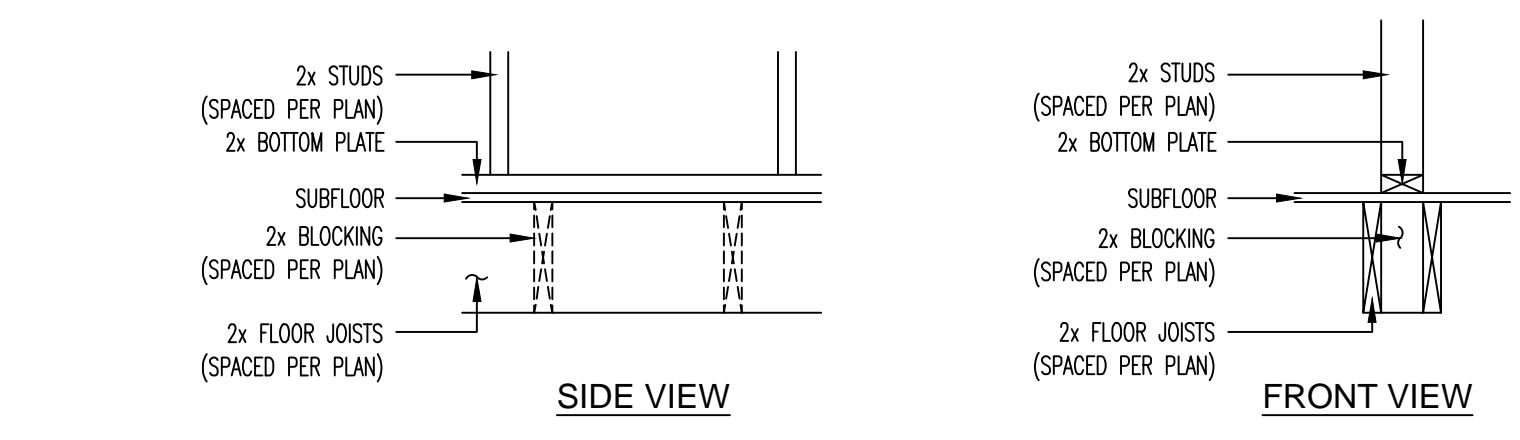
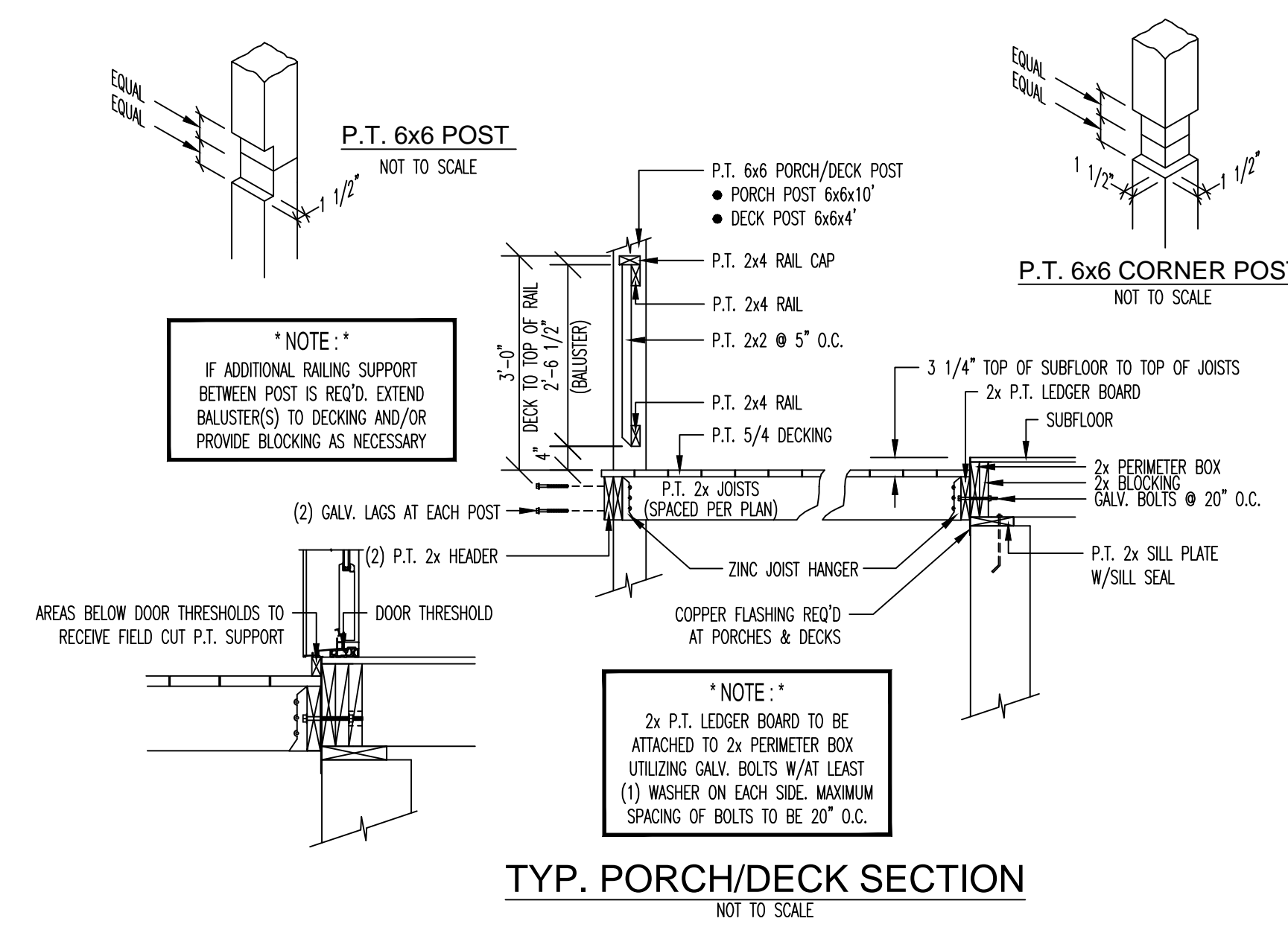


DO NOT SCALE DRAWING - CONTRACTOR TO VERIFY ALL DIMENSIONS IN FIELD



RESIDENCE FOR: <b>SLOANS MILL - HAGGERTY</b>		
PLAN NAME: <b>FLOOR PLANS</b>		
PRELIMINARY DATES: 8-23-18	FINAL PRELIM. DATES: ----	FINAL DATES: ----
DRAWN BY: WRZ/DWG	DRAWN BY: ----	DRAWN BY: ----
FINAL REV. DATES: ----	MODEL: CUSTOM	SCALE: 1/4" = 1'-0"
DRAWN BY: ----	SALES REP: TLH	DWG. NO. ----
DEALER: TLH		SHEET NO. 2 OF 9





**1st LEVEL FLOOR FRAMING GENERAL NOTES**

**• NAILING REQUIREMENTS:** UNLESS MORE STRINGENT REQUIREMENTS ARE INDICATED ELSEWHERE, MINIMUM NAIL QUANTITIES AND SPACING SHALL COMPLY WITH THE NAILING SCHEDULE FROM THE WFCM GUIDE TO WOOD CONSTRUCTION IN HIGH WIND AREAS: 100 MPH EXPOSURE B WIND ZONE.



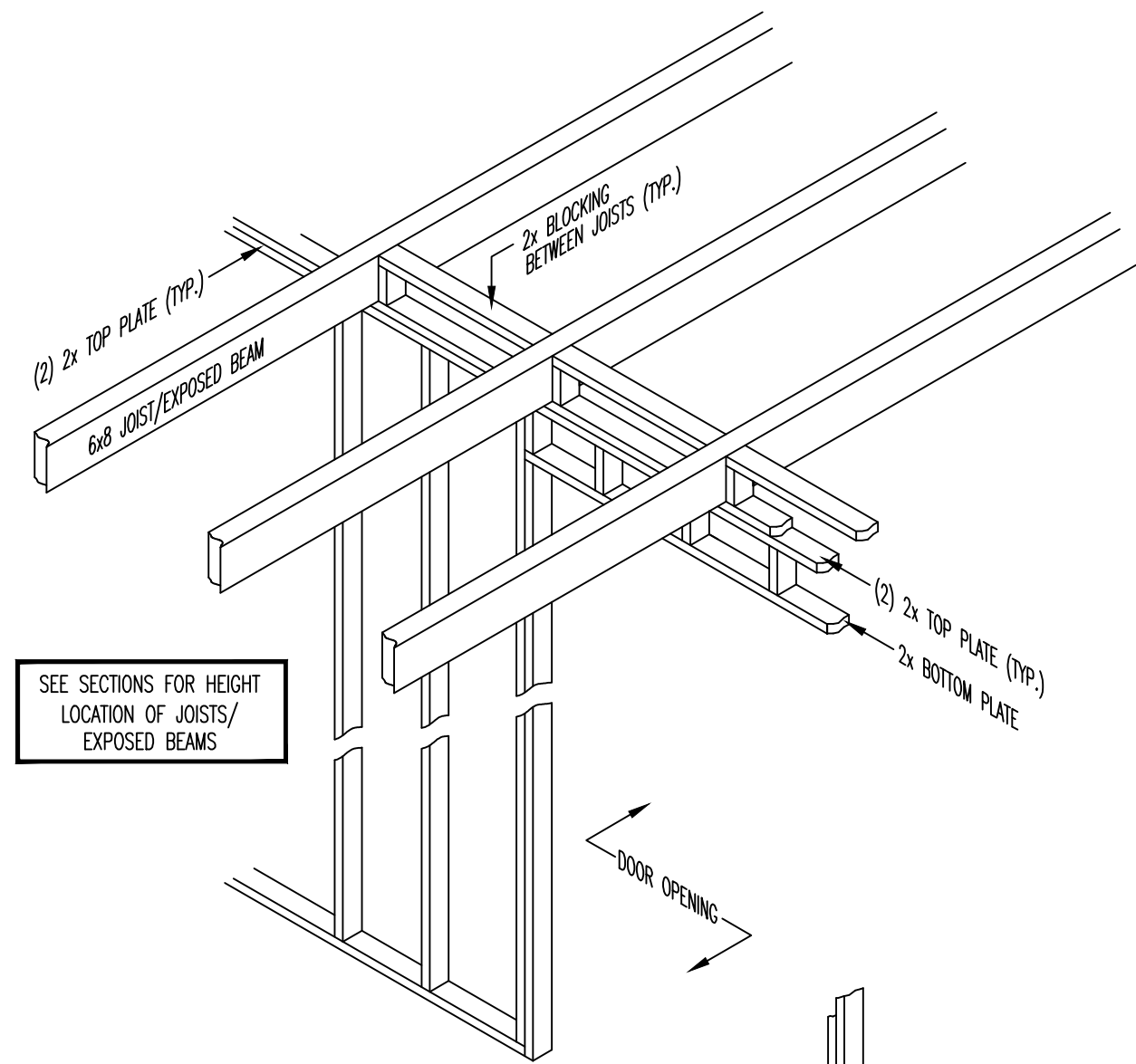
**DO NOT SCALE DRAWING** - CONTRACTOR TO VERIFY ALL DIMENSIONS IN FIELD

**SLOAN'S MILL**  
ENGINEERED LOG & TIMBER FRAME HOMES

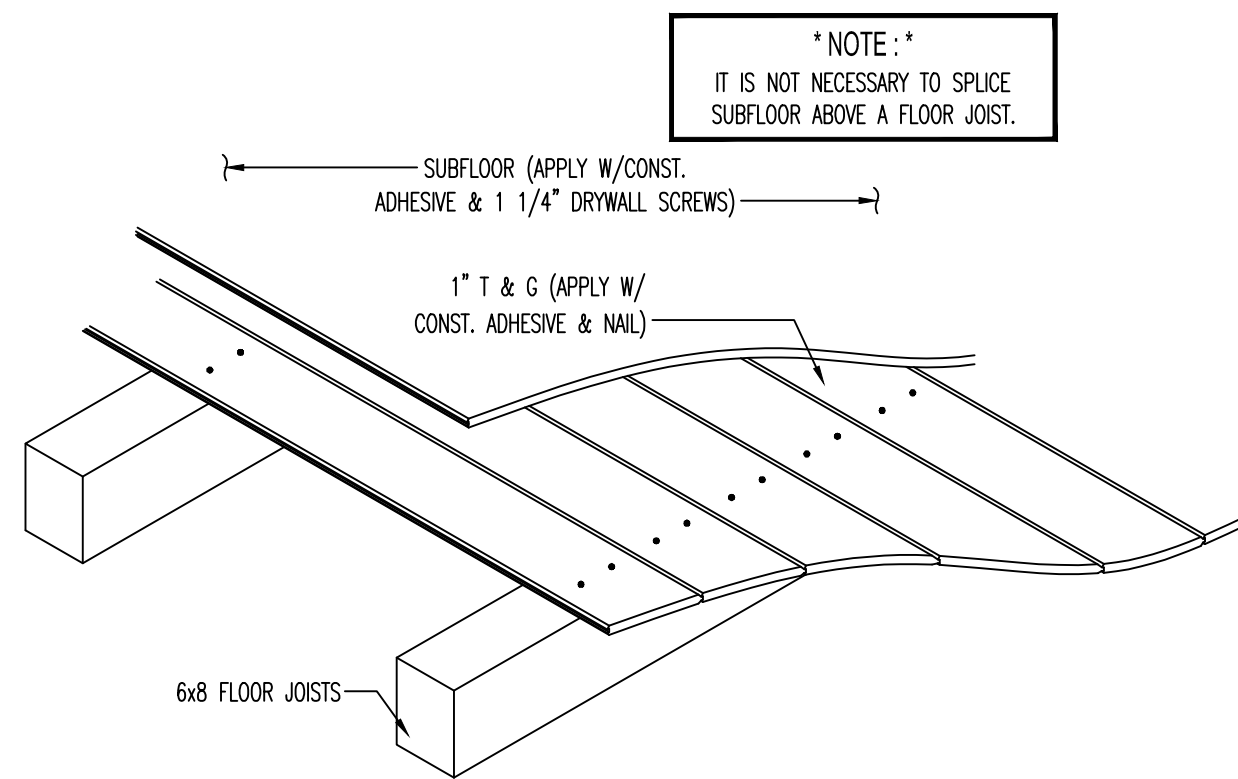
RESIDENCE FOR: **SLOANS MILL - HAGGERTY**

PLAN NAME: **1st LEVEL FLOOR FRAMING PLAN**

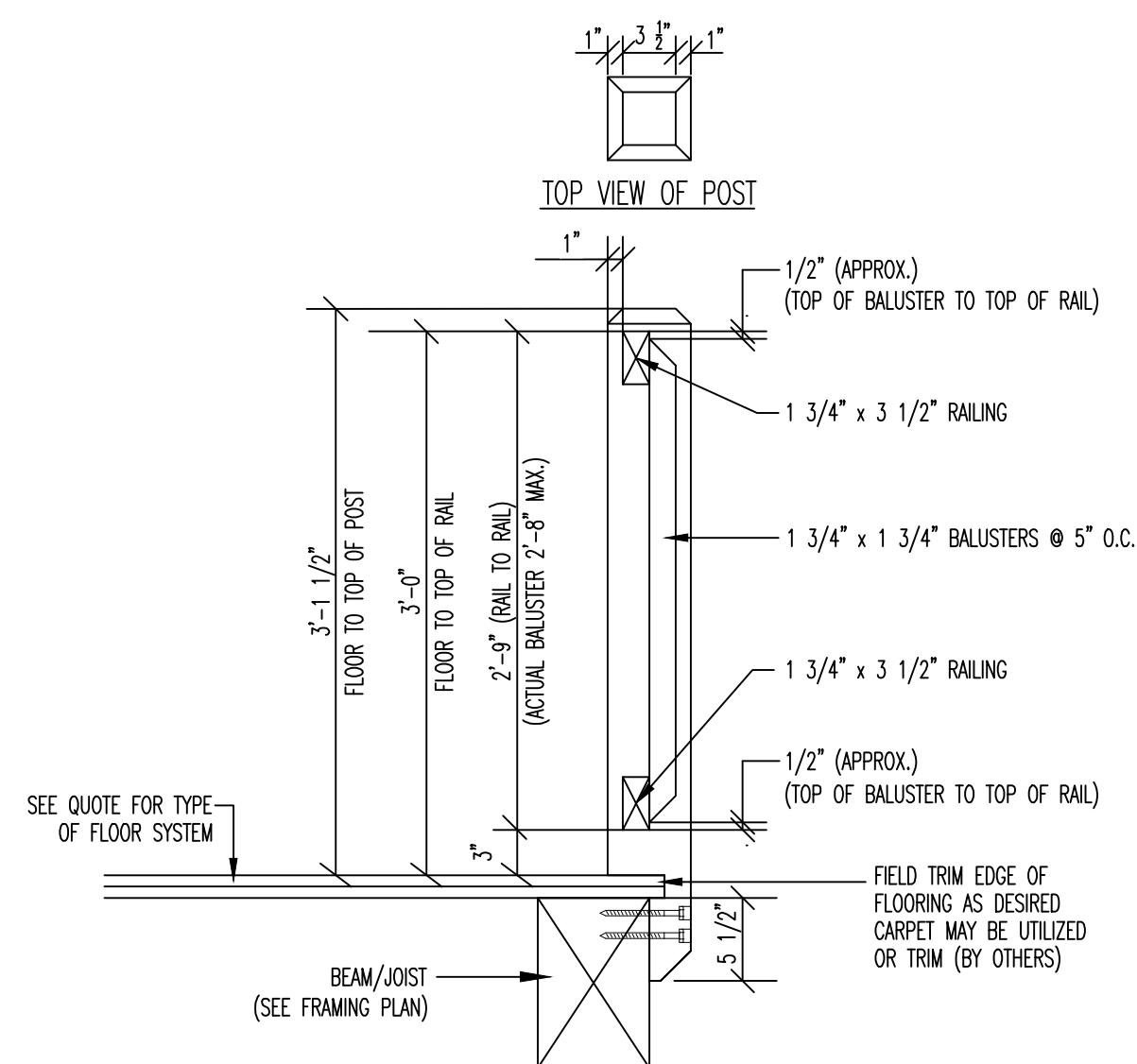
PRELIMINARY DATES: 8-23-18	FINAL PRELIM. DATES: -----	FINAL DATES: 4/5/18
DRAWN BY: WRZR/DWG	DRAWN BY: WRZR	DRAWN BY: WRZR
FINAL REV. DATES: -----	MODEL: -----	SCALE: 1/4" = 1'-0"
DRAWN BY: -----	CUSTOM	PROJ. NO. -----
SALES REP: -----	TLH	DWG. NO. -----
DEALER: -----	TLH	SHEET NO. 4 OF 9



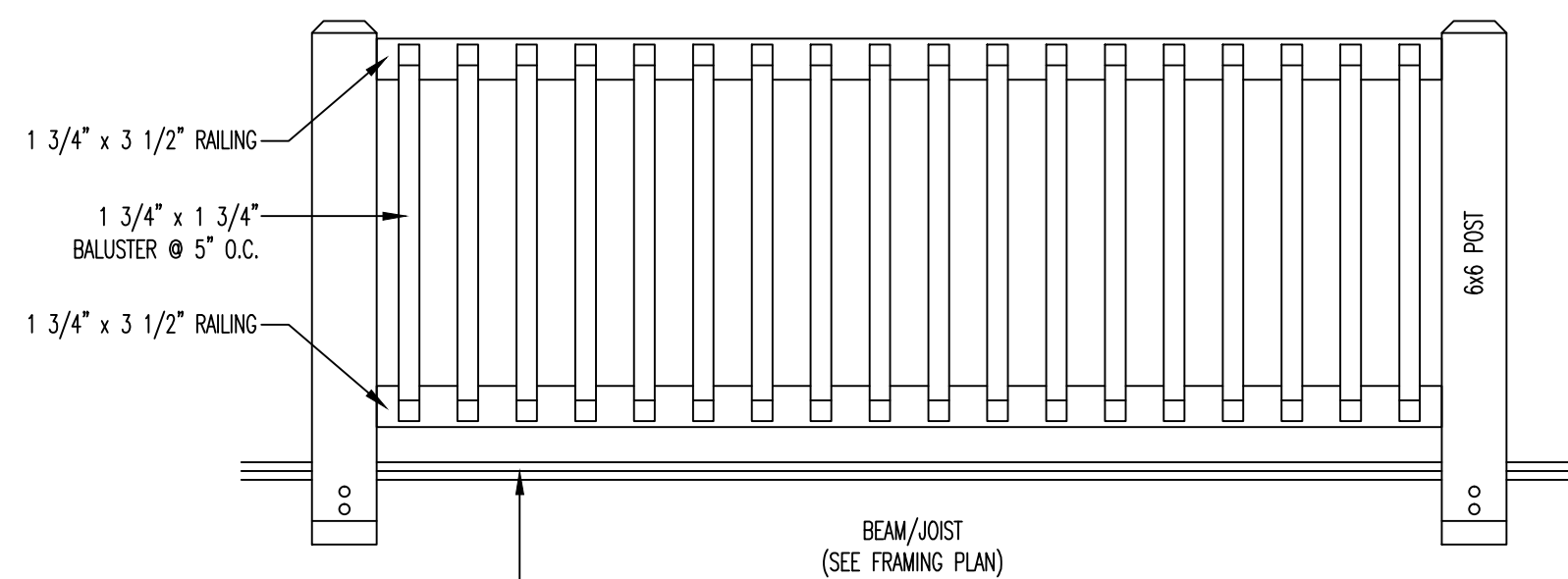
**- 2x STUD WALL -**  
**TYP. 6x8 JOIST/EXPOSED**  
**BEAM OVER NONBEARING**  
**INTERIOR DOOR**  
 NOT TO SCALE



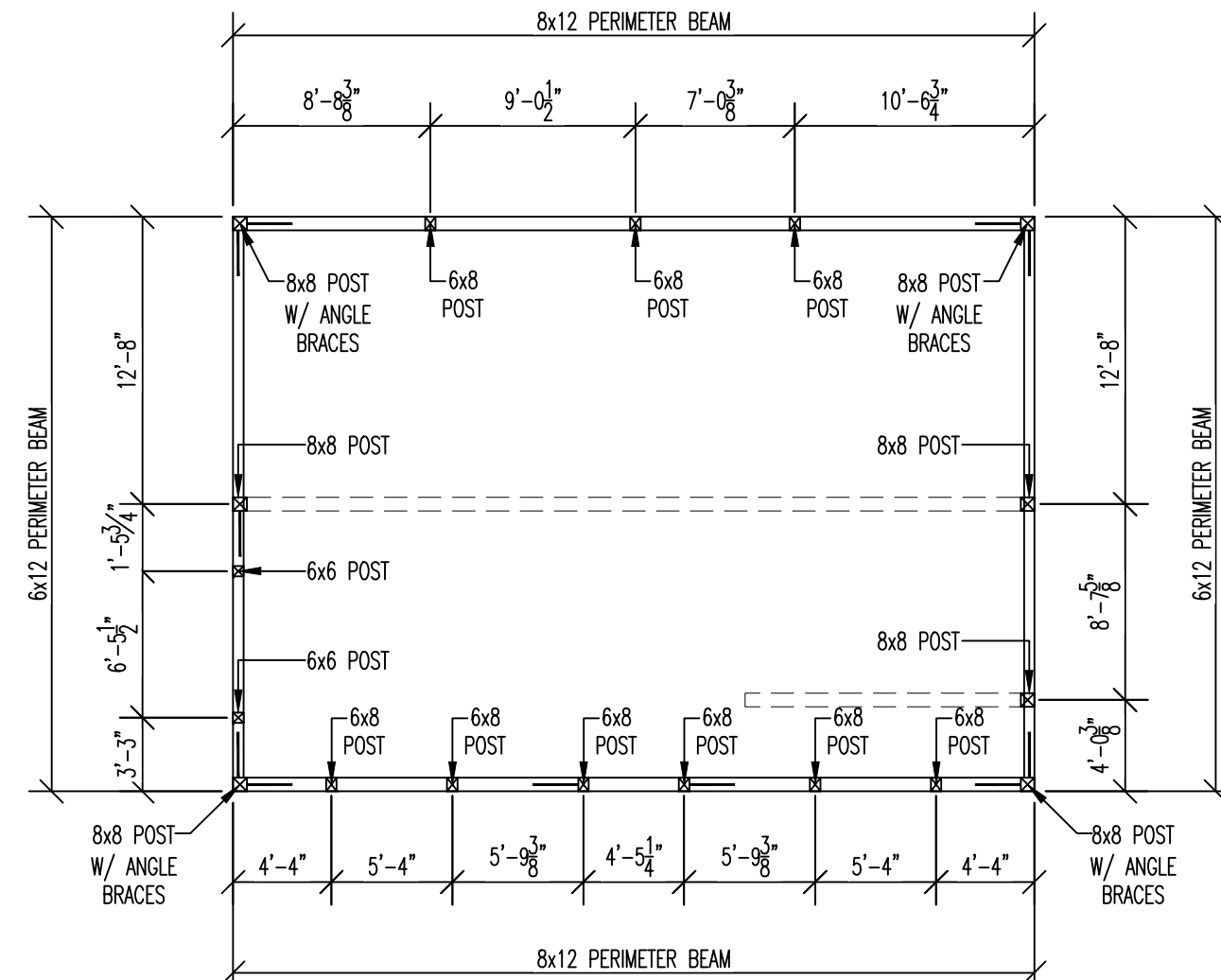
**COMPOSITE 2nd LEVEL FLOOR SYSTEM**  
 NOT TO SCALE



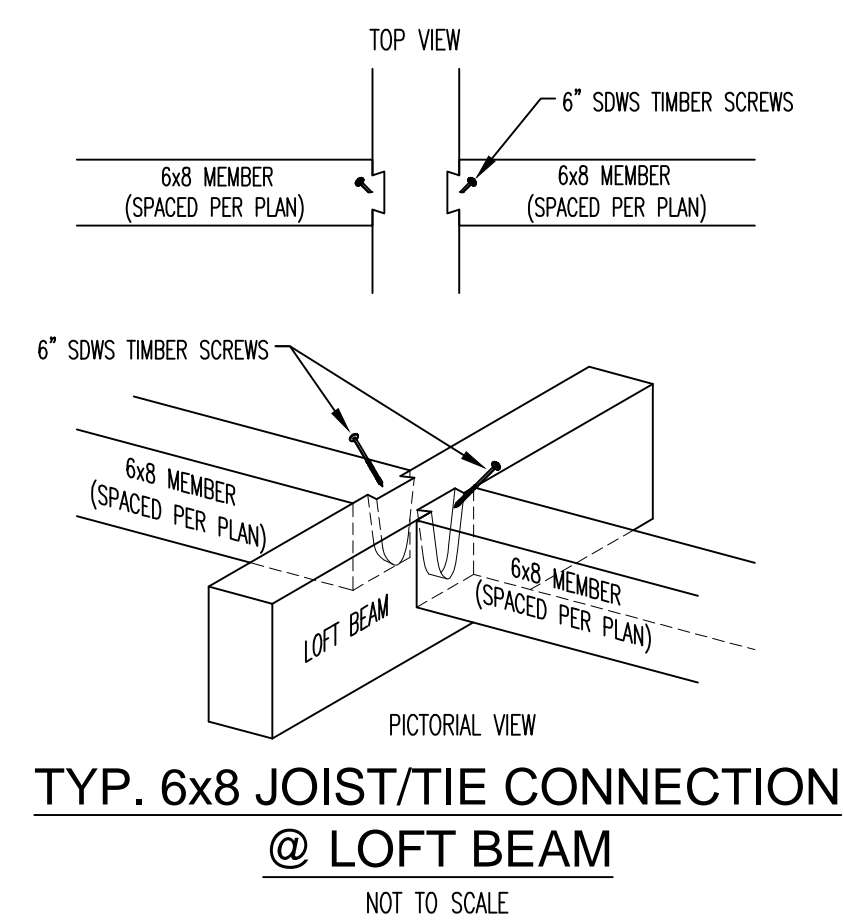
**TYP. HANDRAIL DETAIL**  
**@ STAIRS & LOFT**  
 NOT TO SCALE



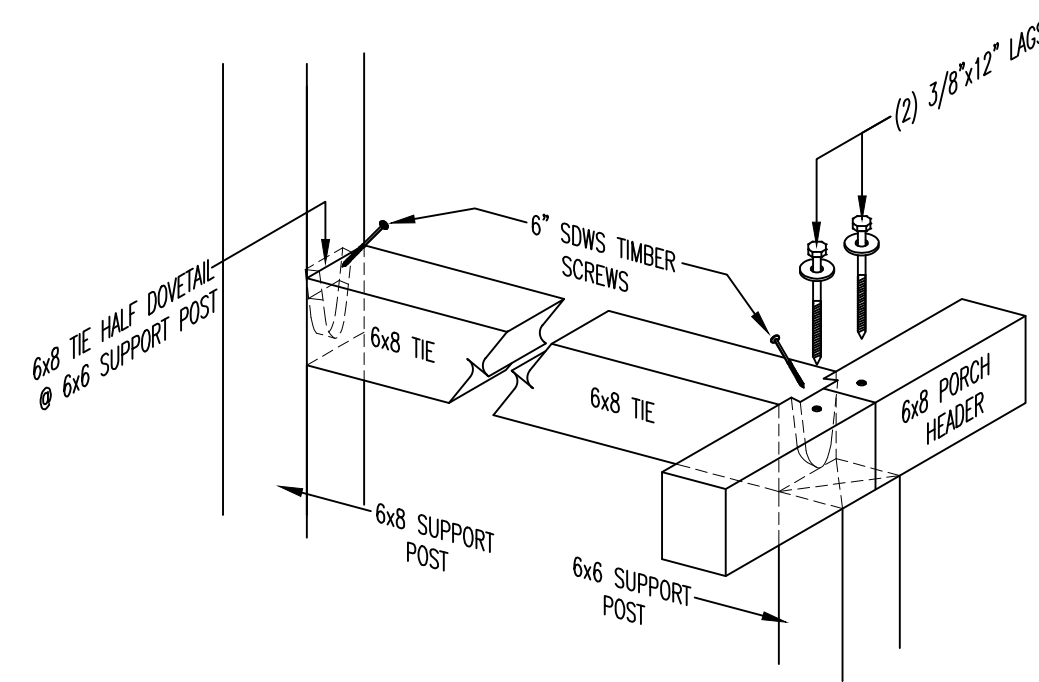
**HANDRAIL SCHEMATIC**  
 NOT TO SCALE



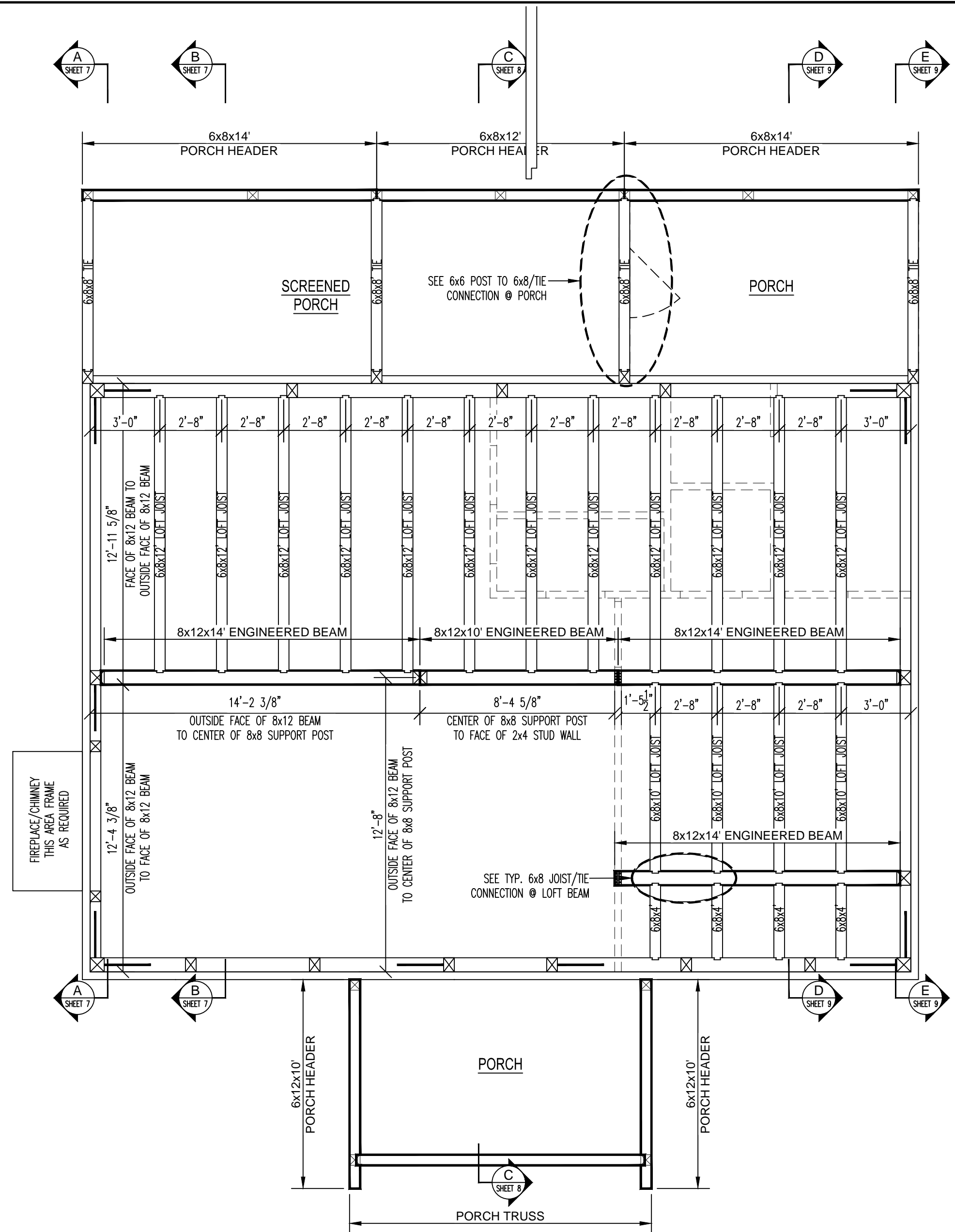
**TIMBER POST LAYOUT**



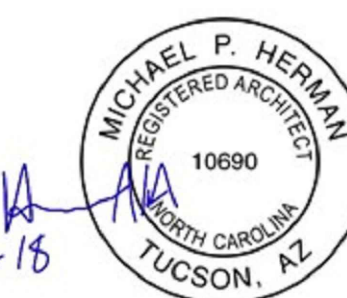
**TYP. 6x8 JOIST/TIE CONNECTION**  
**@ LOFT BEAM**  
 NOT TO SCALE



**6x6 POST TO 6x8/TIE CONNECTION @ PORCH**  
 NOT TO SCALE



**2nd LEVEL FLOOR FRAMING PLAN**



**DO NOT SCALE DRAWING - CONTRACTOR TO VERIFY ALL DIMENSIONS IN FIELD**

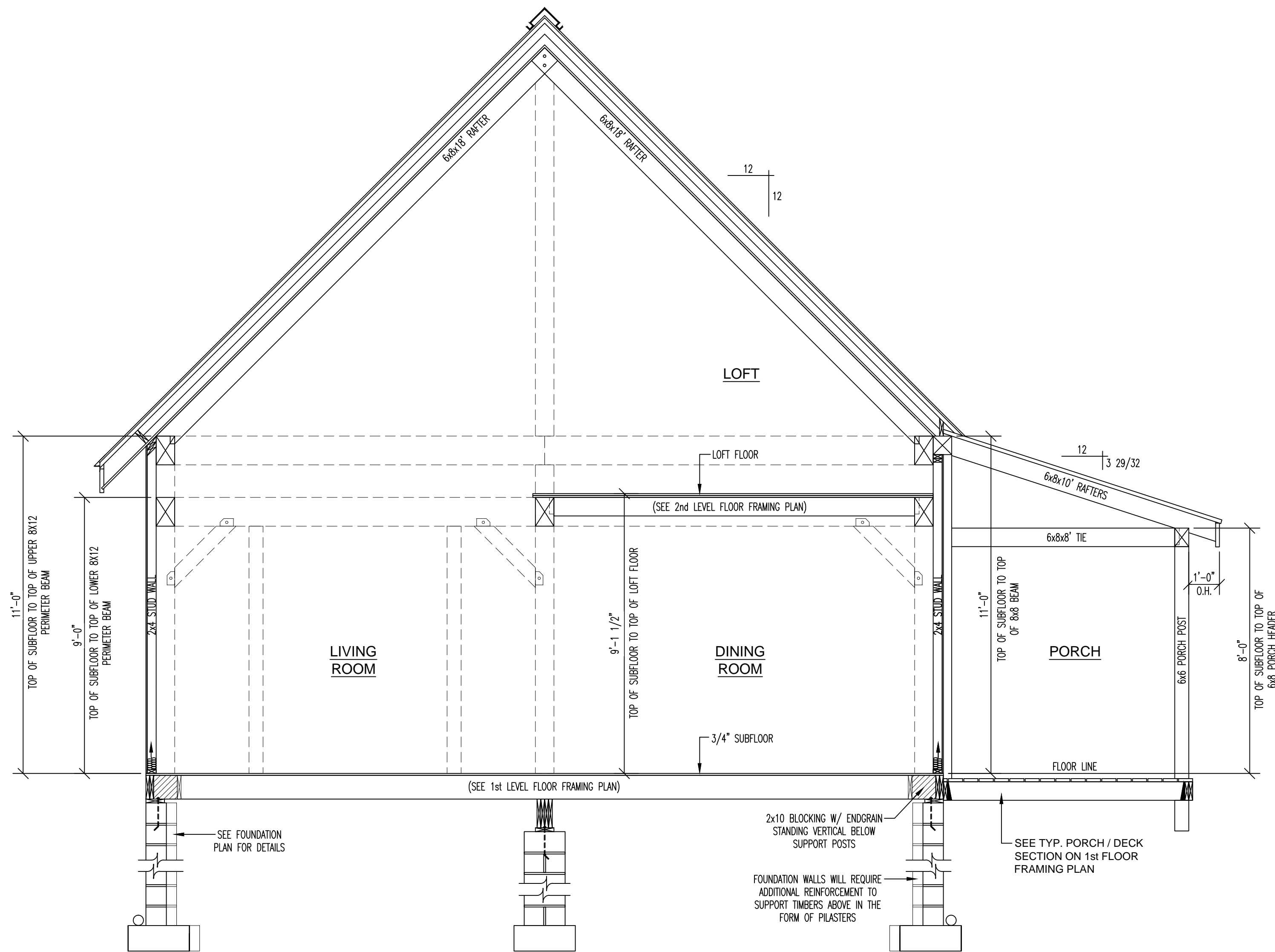
**SLOAN'S MILL**  
 LOG & TIMBER FRAME HOMES

RESIDENCE FOR:  
**SLOANS MILL - HAGGERTY**

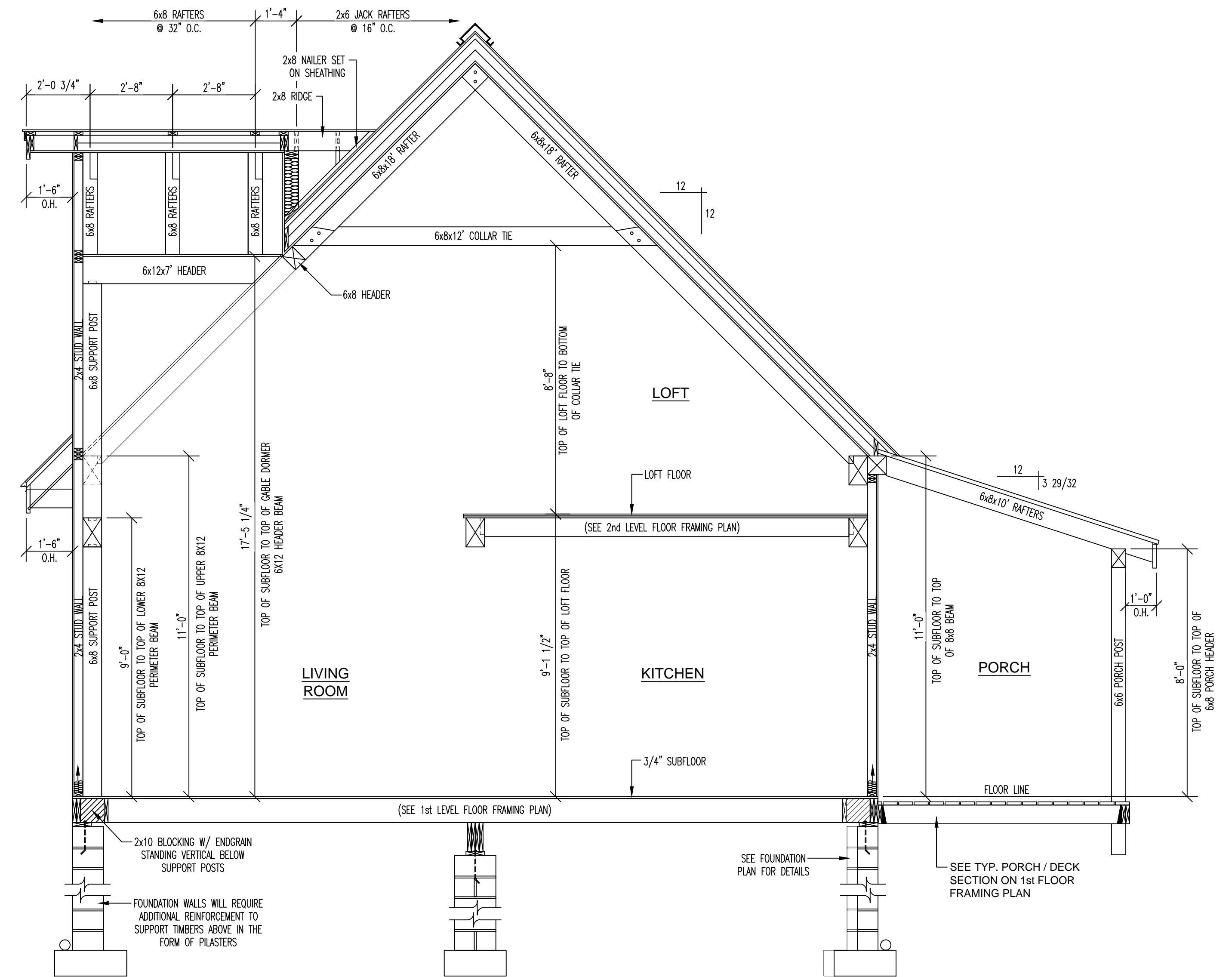
PLAN NAME:  
**2nd LEVEL FLOOR FRAMING PLAN**

PRELIMINARY DATES: 8-23-18	FINAL PRELIM. DATES: -----	FINAL DATES: 4/5/18
DRAWN BY: WRZR/DWG	DRAWN BY: -----	DRAWN BY: WRZR
FINAL REV. DATES: -----	MODEL: -----	SCALE: 1/4" = 1'-0"
DRAWN BY: -----	MODEL: CUSTOM	PROJ. NO. -----
SALES REP: -----	DEALER: TLH	DWG. NO. -----
		SHEET NO. 5 OF 9





**SECTION A-A**  
SCALE 3/8" = 1'-0"



**SECTION B-B**  
SCALE 3/8" = 1'-0"

HURRICANE TIE PLATES & FASTENERS (100 MPH)			
PLATE	PLATE NO.	FASTENERS	LOCATION
	H3Z (ZINC COATED)	(8) 8d GALVANIZED NAIL	• JOIST TO SILL PLATE CONNECTION: (1) EVERY JOIST
	LSTA24	(18) 10d NAIL	• DOOR AND WINDOW HEADER STRAPS IN FRAMED WALLS
	LSTA30	(22) 10d NAIL	• FLOOR-TO-FLOOR STRAP TIES SPACED @ 48" OC
	HDU2	(6) SDS 1/4 x 2 1/2"	• HOLD DOWNS @ STUD WALL CORNERS
		12" TIMBERSCREW	• SPACED @ 12" OC AT ROOF INSULATION STOP.
		3/8 x 10" LAG	• (2) LAGS AND WASHERS AT RAFTER TO BEAM CONNECTION

10-2-15  
MICHAEL P. HERMAN  
REGISTERED ARCHITECT  
10690  
TUCSON, AZ

**DO NOT SCALE DRAWING** - CONTRACTOR TO VERIFY ALL DIMENSIONS IN FIELD

**SLOAN'S MILL**  
LOG & TIMBER FRAME HOMES

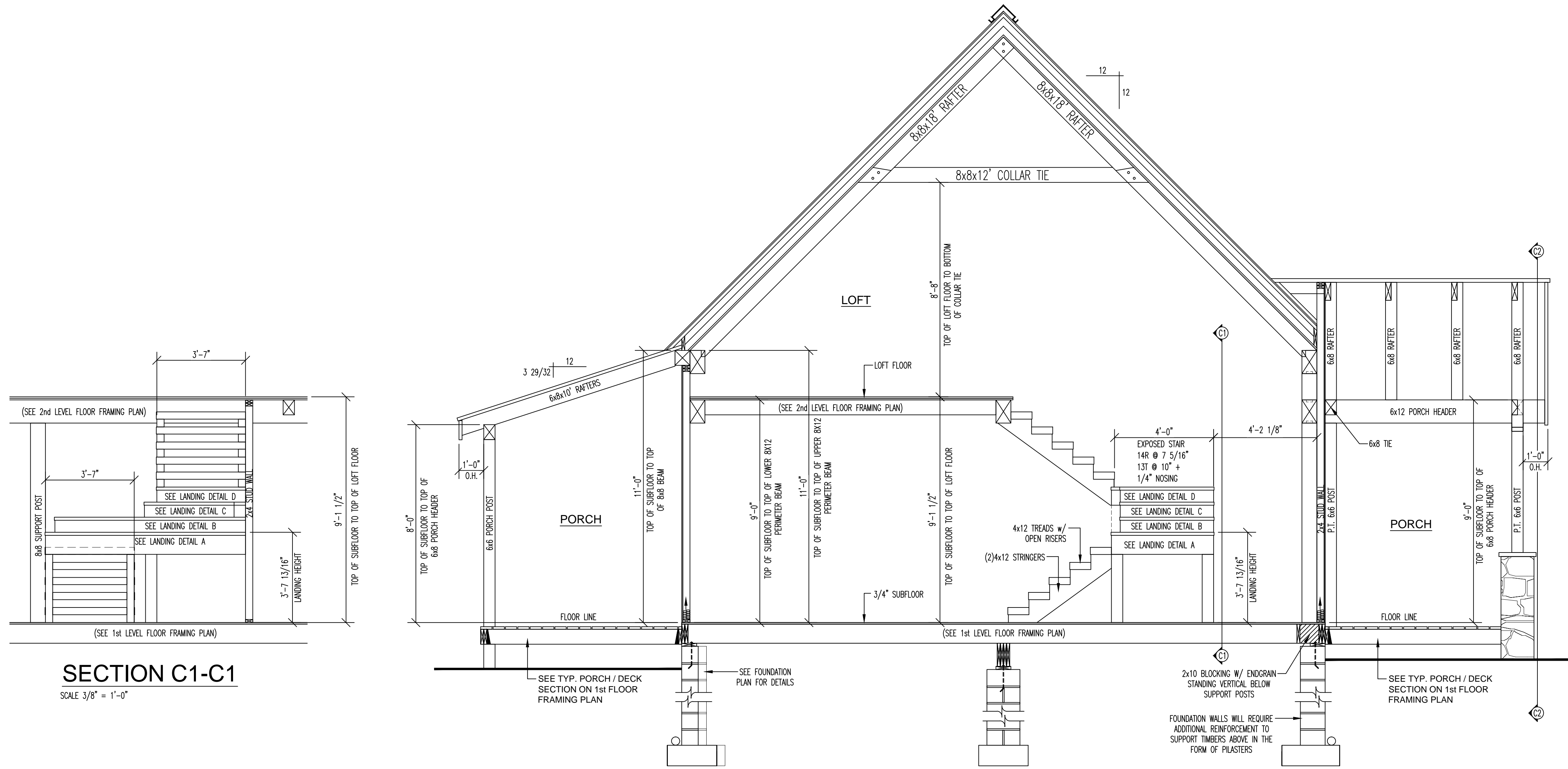
RESIDENCE FOR:  
**SLOANS MILL - HAGGERTY**

PLAN NAME:  
**SECTIONS**

PRELIMINARY DATES: 8-23-18  
DRAWN BY: WRZR/DWG  
FINAL REV. DATES: ---  
DRAWN BY: ---  
MODEL: ---  
SCALE: AS SHOWN  
SALES REP: ---  
DEALER: TLH

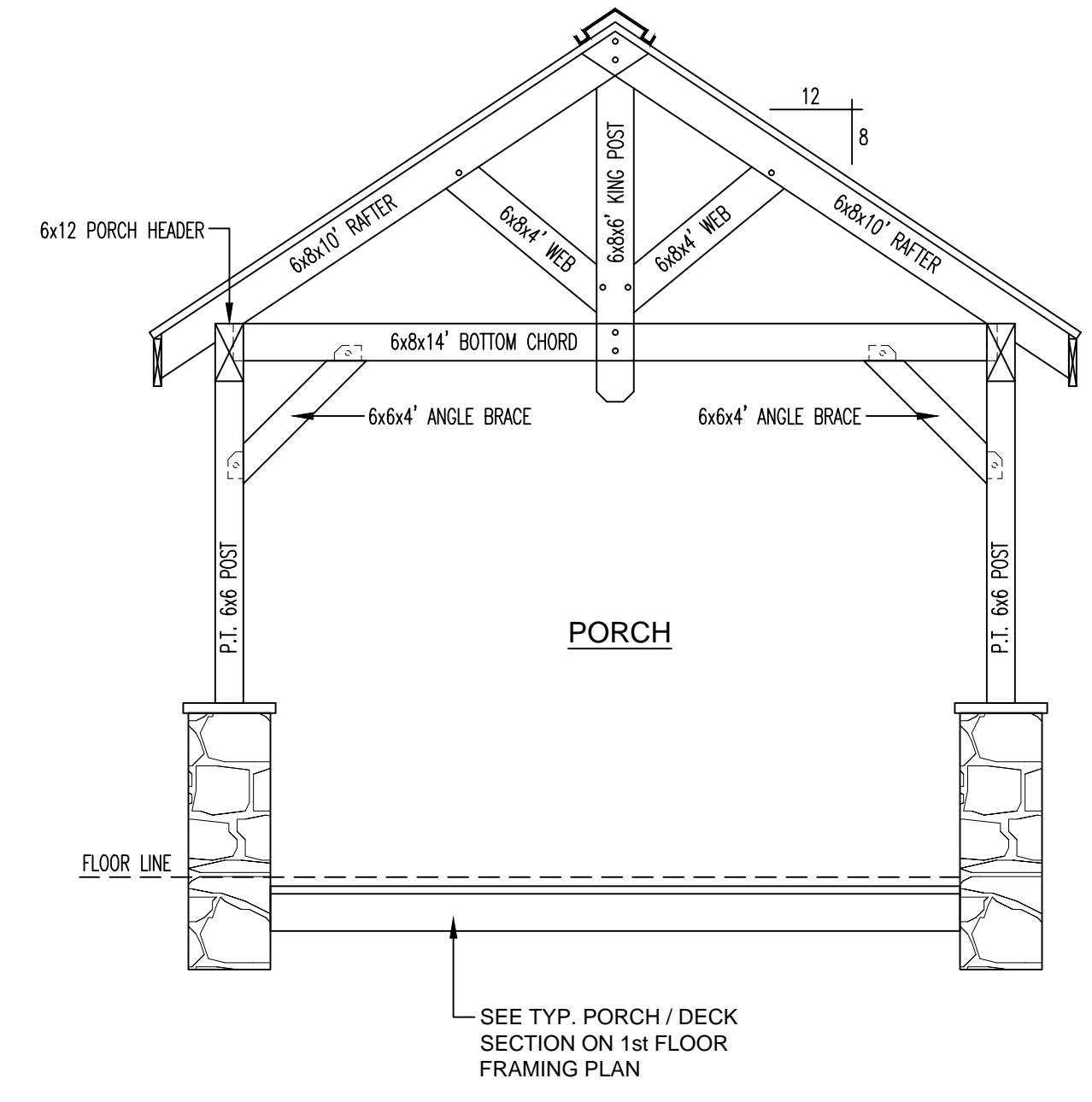
FINAL PRELIM. DATES: ---  
DRAWN BY: ---  
SCALE: AS SHOWN  
PROJ. NO.: ---  
DWG. NO.: ---  
SHEET NO. 7 OF 9

FINAL DATES: 4/5/18  
DRAWN BY: WRZR  
SCALE: AS SHOWN  
PROJ. NO.: ---  
DWG. NO.: ---  
SHEET NO. 7 OF 9

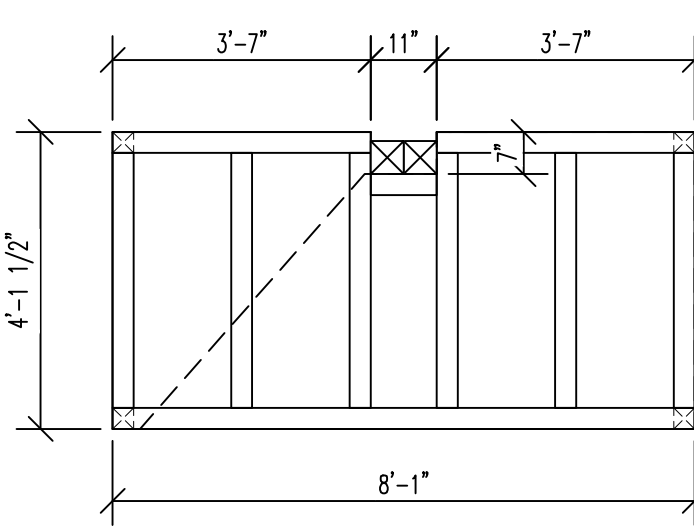


**SECTION C1-C1**  
SCALE 3/8" = 1'-0"

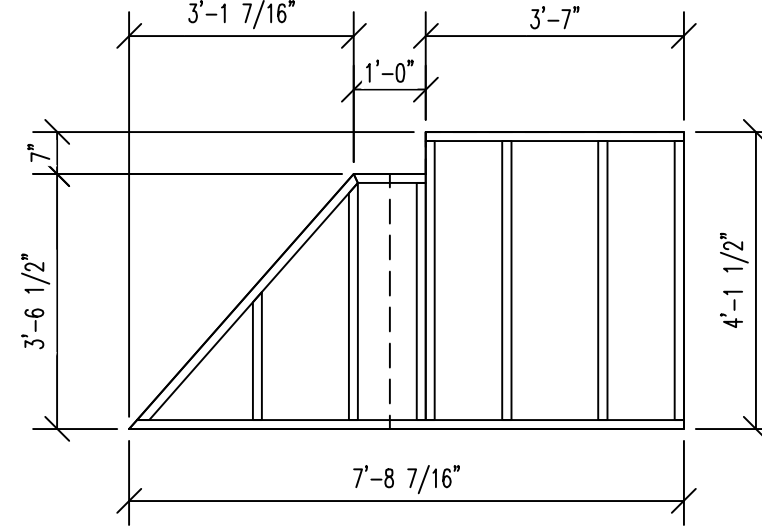
**SECTION C-C**  
SCALE 3/8" = 1'-0"



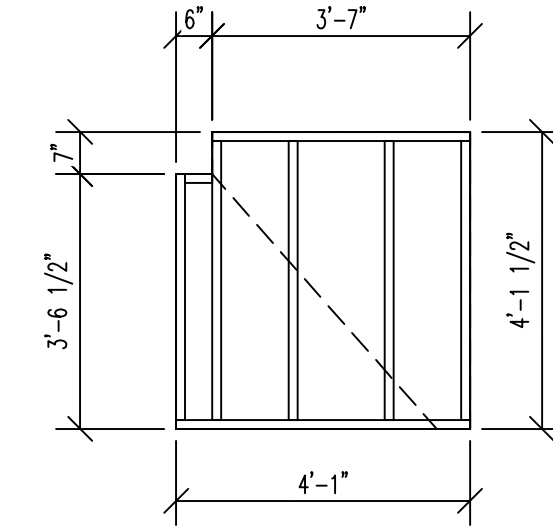
**SECTION C2-C2**  
SCALE 3/8" = 1'-0"



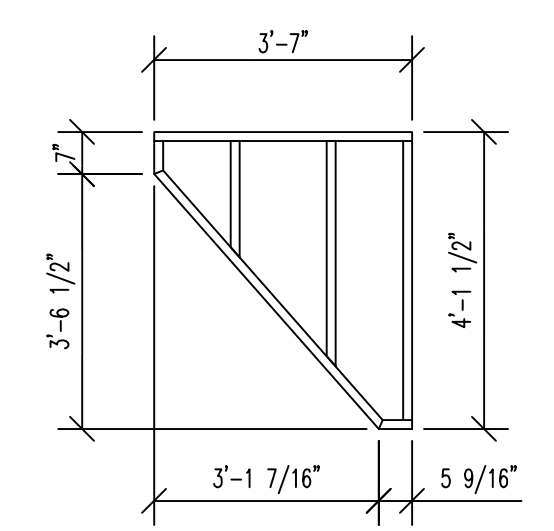
**LANDING DETAIL A**  
SCALE : 3/8" = 1'-0"



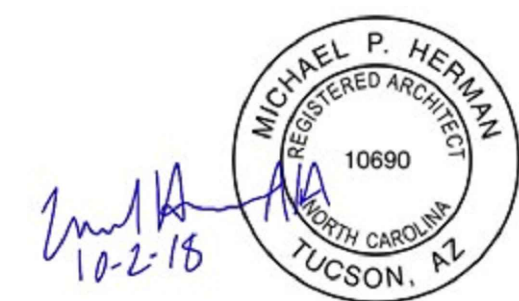
**LANDING DETAIL B**  
SCALE : 3/8" = 1'-0"



**LANDING DETAIL C**  
SCALE : 3/8" = 1'-0"



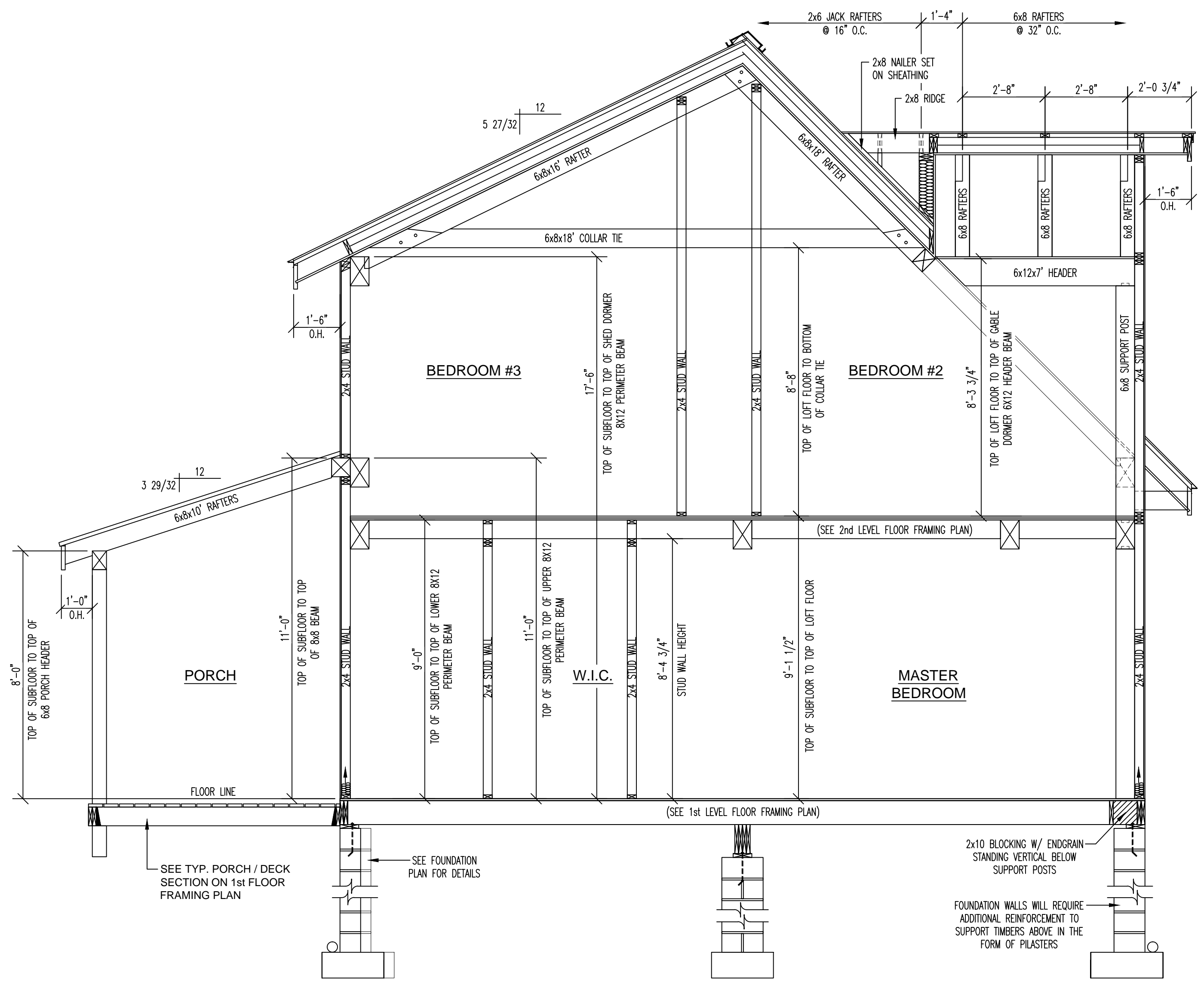
**LANDING DETAIL D**  
SCALE : 3/8" = 1'-0"



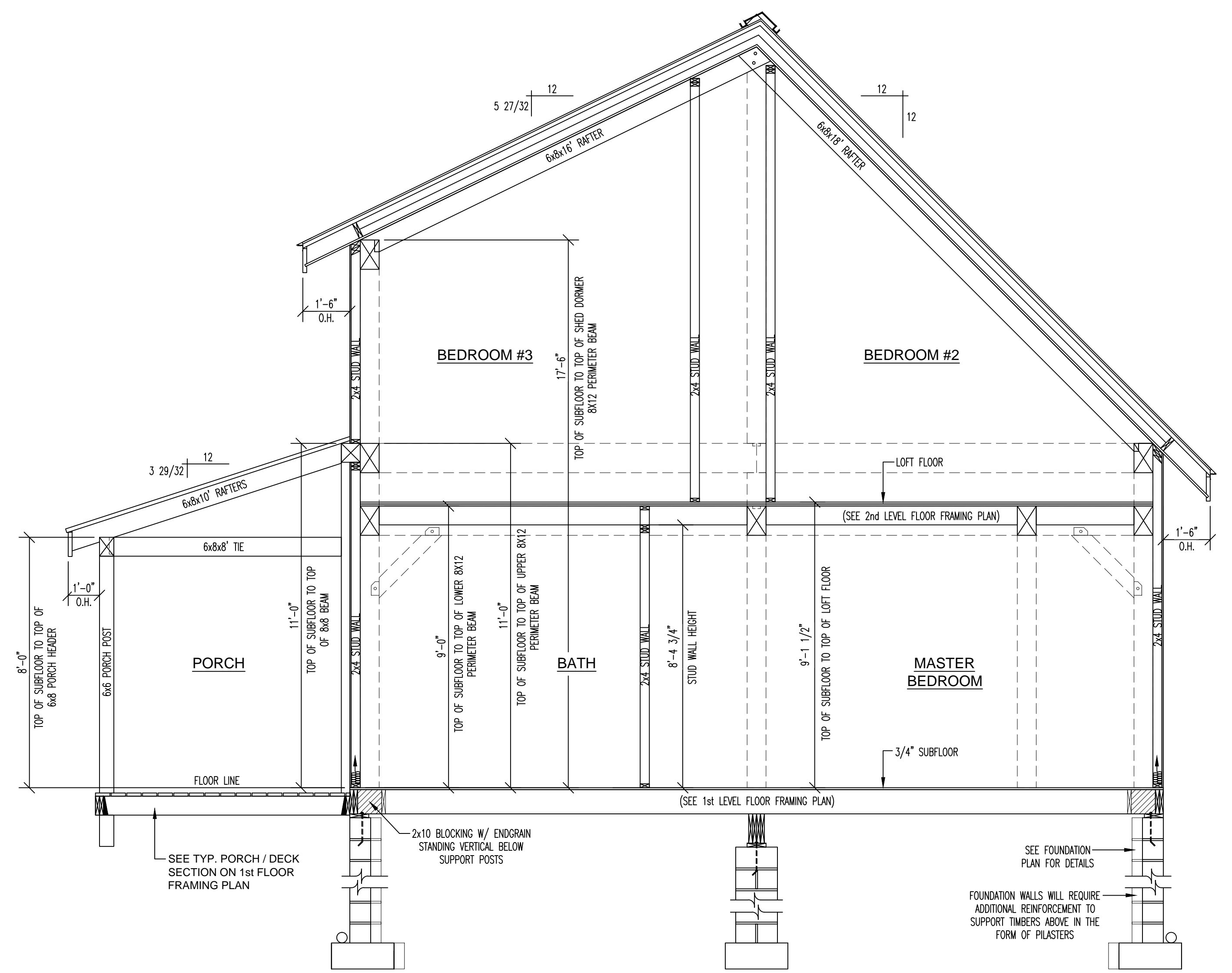
DO NOT SCALE DRAWING - CONTRACTOR TO VERIFY ALL DIMENSIONS IN FIELD

	RESIDENCE FOR:	<b>SLOANS MILL - HAGGERTY</b>	
	PLAN NAME:	<b>SECTIONS</b>	
	PRELIMINARY DATES: 8-23-18	FINAL PRELIM. DATES: ----	FINAL DATES: 4/5/18
	DRAWN BY: WRZR/DWG	DRAWN BY: ----	DRAWN BY: WRZR
	FINAL REV. DATES: ----	MODEL: CUSTOM	SCALE: AS SHOWN
DRAWN BY: ----	PROJ. NO. ----	DWG. NO. ----	
SALES REP: TLH	DEALER: TLH	SHEET NO. 8 OF 9	





**SECTION D-D**  
SCALE 3/8" = 1'-0"



**SECTION E-E**  
SCALE 3/8" = 1'-0"

*Michael P. Herman*  
10-2-18



**DO NOT SCALE DRAWING** - CONTRACTOR TO VERIFY ALL DIMENSIONS IN FIELD

**SLOAN'S MILL**  
LOG & TIMBER FRAME HOMES

RESIDENCE FOR:  
**SLOANS MILL - HAGGERTY**

PLAN NAME:  
**SECTIONS**

PRELIMINARY DATES: 8-23-18	FINAL PRELIM. DATES: ----	FINAL DATES: 4/5/18
DRAWN BY: WRZR/DWG	DRAWN BY: ----	DRAWN BY: WRZR
FINAL REV. DATES: ----	MODEL: ----	SCALE: AS SHOWN
DRAWN BY: ----	MODEL: CUSTOM	PROJ. NO. ----
SALES REP: /	DEALER: TLH	DWG. NO. ----
		SHEET NO. 9 OF 9