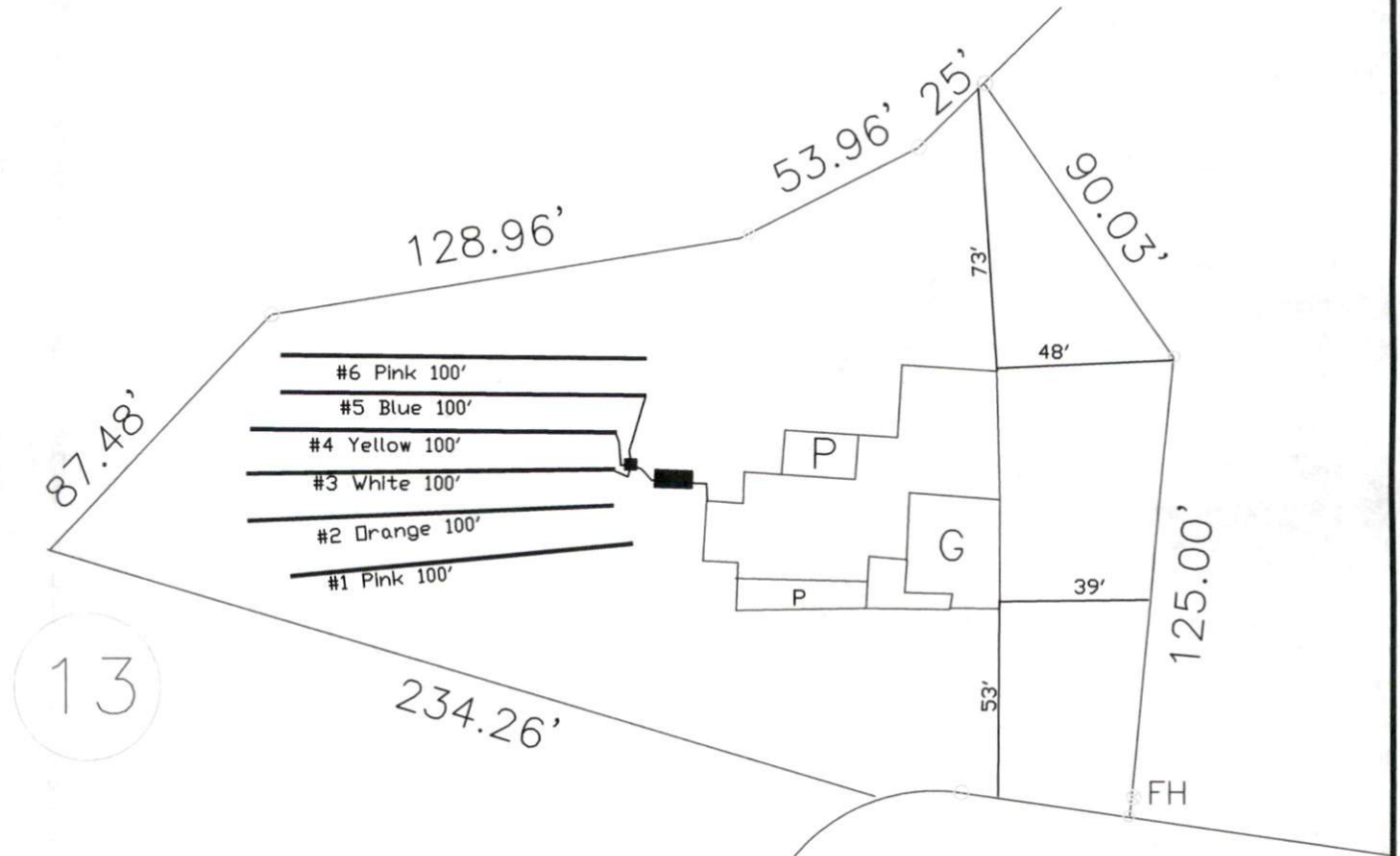


Stephenson Builders Lot #13 Morgan Farms 4-Bedroom Septic System Design



System: Gravity to D-Box
 Lines: 3-5 (300')
 0.4 LTAR
 20" Trench Bottom
 Accepted Status System
 Repair: Pump to D-Box
 Lines: 1,2,6, (300')
 0.4LTAR
 15" Trench Bottom
 Accepted Status System

Morgan Farm
Drive

GRAPHIC SCALE
 1" = 50'



Adams
 Soil Consulting
 919-414-6761
 Job #343

Stephenson Builders
Lot #13 Morgan Farm

4-Bedroom Home (480 gal./day)

<u>LINE #</u>	<u>COLOR</u>	<u>BS</u>	<u>HI</u>	<u>FS</u>	<u>ELEVATION</u>	<u>LINE LENGTH</u>	<u>Design Length</u>
TBM		0.0		100.0		<u>in field</u>	<u>installation</u>
INST. 1			100.0				
1	Pink			3.4	2.1	100	100
2	Orange			3.5	2.6	100	100
3	<i>White</i>			3.7	3.1	100	100
4	<i>Yellow</i>			3.9	3.6	100	100
5	<i>Blue</i>			4.1	4.3	100	100
6	Pink			4.4	5.3	100	100
					Total	600	600

	<u>System</u>	<u>Repair</u>
	Lines 3-5	Lines 1-2, 6
System Type	Accepted Status System	Accepted Status System
	EZ-FLOW	EZ-FLOW
Suggested Soil LTAR	0.40	0.40
Total Line Length	300	300
Square Footage	900	900
Proposed Trench Bottom	20"	15"
Distribution Method	Gravity to D-Box	Pump to D-Box

*The repair system may require up to 6" of county approved fill material over the trenches (Line #6)