



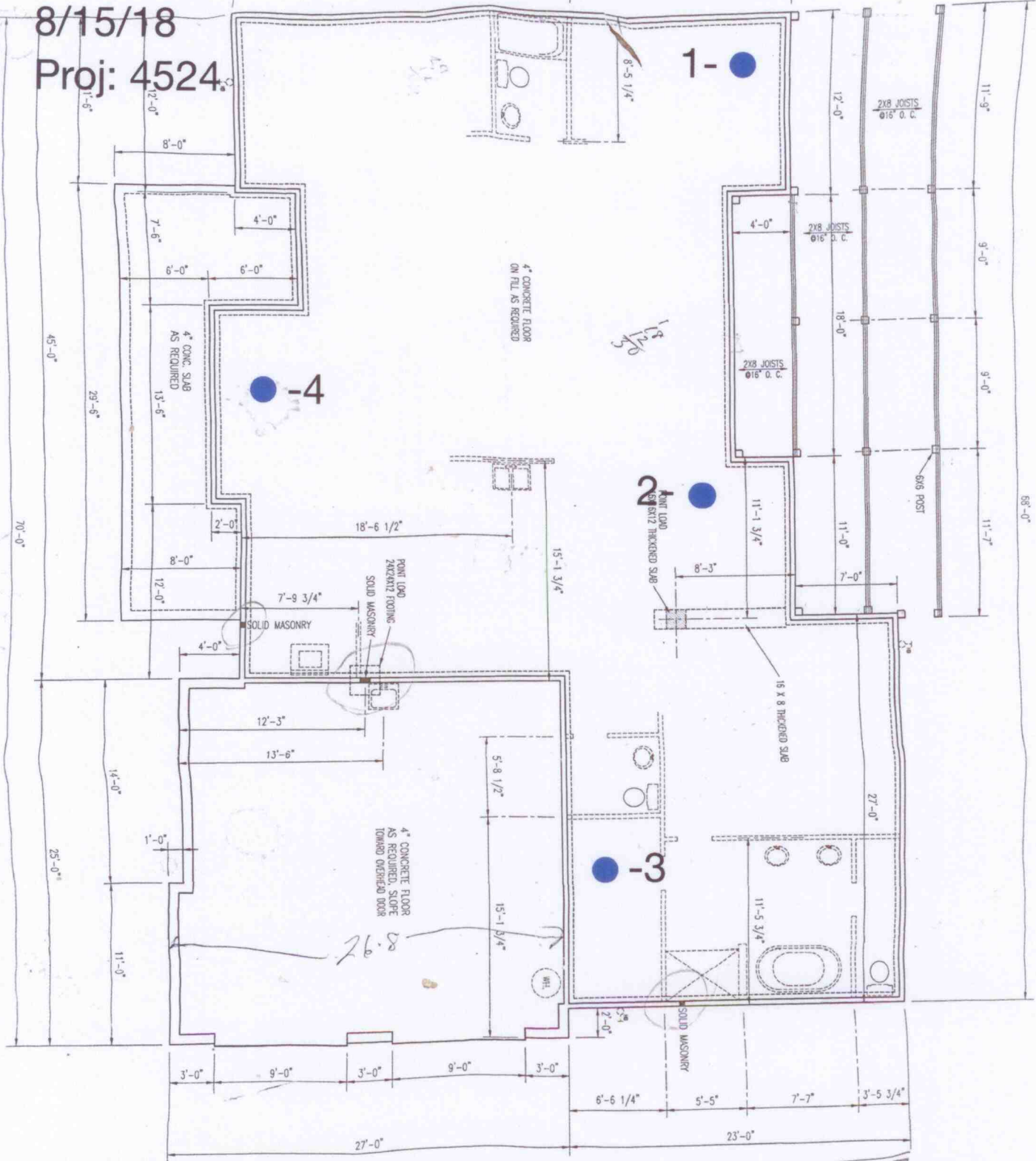
Kyle Adair

299 Peanut Lane



8/15/18

Proj: 4524

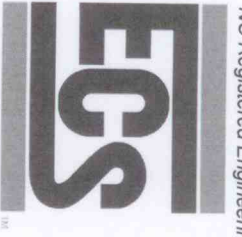


### LEGEND

● DCP Locations (Stem Wall Backfill)

*530*

FOUNDATION



## Report of Spread Footing - Foundation Observations

Project: Peanut Lane (299) Foundation Evaluation  
 Location: 299 Peanut Lane  
Cameron - Moore - NC - 28326  
 Contractor: Tisdale Homes Inc.

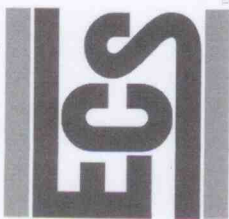
Project No. 4525  
 Day/Date: 08/15/18

Footing Number	Location	Size (W x H x L)		Footing Bottom Elevation		Description of Subgrade Material	Required Blow Counts		Design Bearing Pressure
		Design	Actual	Design	Depth of Undercut (in)		# of Blows / increment		
1	north east corner	X X	X X	N/A	0	orange clayey sand	6		2000
1	north east corner	X X	X X	N/A	-1	brown clayey sand	5-6-6		2000
1	north east corner	X X	X X	N/A	-2	brown orange clayey sand	6		2000
1	north east corner	X X	X X	N/A	-3	brown orange clayey sand	13-15-16		2000
2	middle east of pad	X X	X X	N/A	0	orange clayey sand	25+		2000
2	middle east of pad	X X	X X	N/A	-1	brown clayey sand	6		2000
2	middle east of pad	X X	X X	N/A	-2	brown orange clayey sand	7-7-6		2000
2	middle east of pad	X X	X X	N/A	-3	brown orange clayey sand	8-8-12		2000
2	middle east of pad	X X	X X	N/A	-3	brown orange clayey sand	6		2000
2	middle east of pad	X X	X X	N/A	-3	brown orange clayey sand	11-13-15		2000
2	middle east of pad	X X	X X	N/A	-3	brown orange clayey sand	6		2000
2	middle east of pad	X X	X X	N/A	-3	brown orange clayey sand	11-16-16		2000

By: Kyle Adair

ECS Southeast, LLP





## Report of Spread Footing - Foundation Observations

Project: Peanut Lane (299) Foundation Evaluation

Location: 299 Peanut Lane

Cameron - Moore - NC - 28326

Contractor: Tisdale Homes Inc.

Project No. 4525

Day/Date: 08/15/18

Footing Number	Location	Size (W x H x L)		Footing Bottom Elevation		Description of Subgrade Material	Required Blow Counts		Design Bearing Pressure
		Design	Actual	Design	Depth of Undercut (in)		# of Blows / increment		
3	south near garage	x x	x x	N/A	0	orange clayey sand	6	2000	
3	south near garage	x x	x x	N/A	-1	brown clayey sand	7-6-7 6	2000	
3	south near garage	x x	x x	N/A	-2	brown orange clayey sand	6-7-12 6	2000	
3	south near garage	x x	x x	N/A	-3	brown orange clayey sand	6-8-7 6	2000	
4	middle west of building pad	x x	x x	N/A	0	orange clayey sand	17-17-19 6	2000	
4	middle west of building pad	x x	x x	N/A	-1	brown clayey sand	7-6-6 6	2000	
4	middle west of building pad	x x	x x	N/A	-2	brown orange clayey sand	7-9-13 6	2000	
4	middle west of building pad	x x	x x	N/A	-3	brown orange clayey sand	11-9-9 6	2000	
4	middle west of building pad	x x	x x	N/A	-3	brown orange clayey sand	11-11-12 6	2000	

By: Kyle Adair

ECS Southeast, LLP