

VICINITY MAP
NOT TO SCALE

SR 1117 - NURSERY ROAD
PUBLIC R/W VARIES



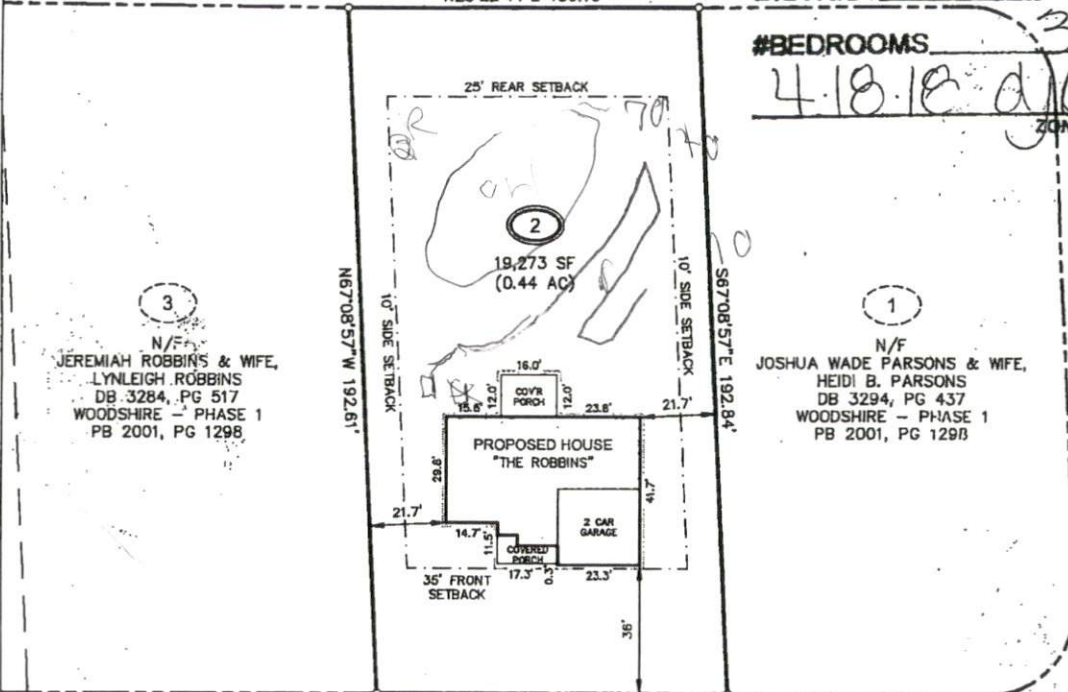
SITE PLAN APPROVAL

DISTRICT RA20R USE SFD

N25°22'44"E 100.10'

#BEDROOMS 3

4.18.18 didusm
ZONING ADMINISTRATOR



3
N/F
JEREMIAH ROBBINS & WIFE,
LYNLEIGH ROBBINS
DB 3284, PG 517
WOODSHIRE - PHASE 1
PB 2001, PG 1298

1
N/F
JOSHUA WADE PARSONS & WIFE,
HEIDI B. PARSONS
DB 3294, PG 437
WOODSHIRE - PHASE 1
PB 2001, PG 1298

S25°30'52"W 100.11'

DUNBAR DRIVE
50' PUBLIC R/W

LEGEND:
N/F-NOW OR FORMERLY
R/W-RIGHT OF WAY

REFERENCES:
PIN 0506-65-9980.000
DB 1946, PG 233
PB 2001, PG 1298

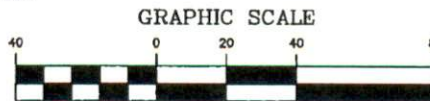
NOTES:
1. ALL DISTANCES ARE
HORIZONTAL GROUND.
2. ZONING: RA-20R

PLOT PLAN FOR

CLIENT: JERNIGAN BUILDERS, INC.
SUBMISSION: WOODSHIRE - PHASE 1
ADDRESS: 292 DUNBAR DRIVE
SCALE: 1" = 40'
LOT 2

DRAWN BY: SEAN
PROJECT: 8.35

ANDERSON CREEK TOWNSHIP
TOWN OF LILLINGTON
HARNETT COUNTY
NORTH CAROLINA
DATE: MARCH 8, 2018



(IN FEET)
1 inch = 40 ft.



03-08-18

SEAN R. SEEVER, PLS L-4571

THIS MAP MAY NOT BE A
CERTIFIED SURVEY AND HAS
NOT BEEN REVIEWED BY A
LOCAL GOVERNMENT AGENCY
FOR COMPLIANCE WITH ANY
APPLICABLE LAND DEVELOPMENT
REGULATIONS AND HAS NOT
BEEN REVIEWED FOR
COMPLIANCE WITH RECORDING
REQUIREMENTS FOR PLATS.

4Dsite solutions
civil engineering | land surveying
409 Chicago Drive, Suite 112, Fayetteville, NC 28306
office | 910-426-6777 fax | 910-426-5777 license number | C-2354
www.4Dsite.com