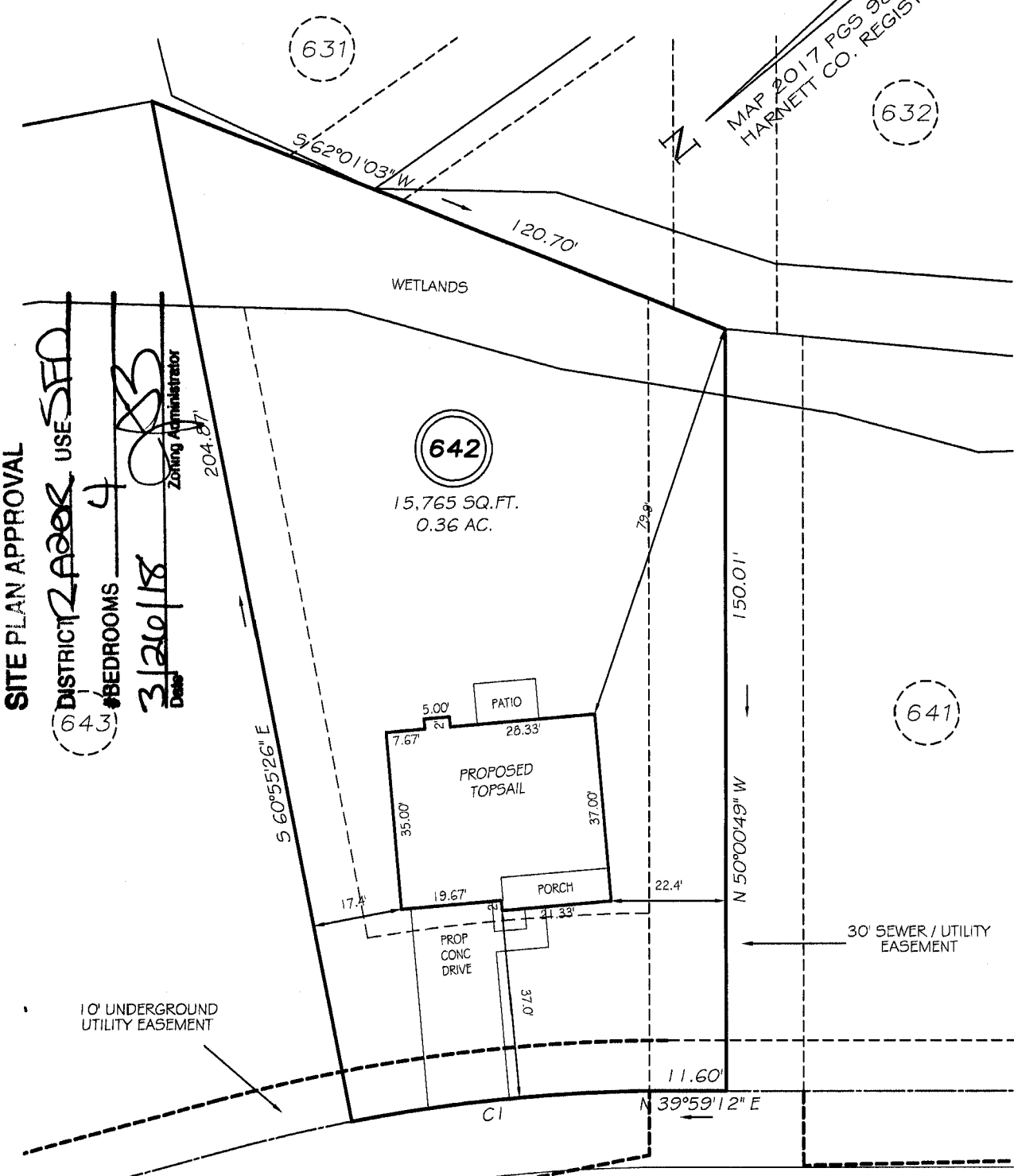


I, MICHAEL P. GRIFFIN, certify that under my direction and supervision this map was drawn from an actual field survey; that the error of closure of the survey as calculated by coordinates is 1: 10,000+; that the area shown hereon was calculated by coordinates.

Witness my hand and seal this day of MONTH 2018.

MAP 2017 PGS 98-99
HARNETT CO. REGISTRY



SITE PLAN APPROVAL

DISTRICT ~~2A008~~ USE ~~SFD~~
 #BEDROOMS 4
 3/20/18
 Zoning Administrator

PITTFIELD RUN
50' PUBLIC/UTILITY RAW

SETBACKS

FRONT	35'
REAR	25'
SIDE (ONE SIDE)	5'
SIDE (ONE SIDE)	10'
CORNER SIDE	20'

CI R=325.00' L=61.89' N34°31'53" E 61.79'

PRELIMINARY
NOT FOR RECORDATION,
SALES OR CONVEYANCE

LEGEND

EIP	EXISTING IRON PIPE	FES	FLARED END SECTION
IPS	IRON PIPE SET	WM	WATER METER
RAW	RIGHT OF WAY	CO	CLEAN OUT
N/F	NOW OR FORMERLY	FH	FIRE HYDRANT
EIS	EXISTING IRON STAKE	CB	CATCH BASIN



GRIFFIN LAND SURVEYING, INC.
 P.O. BOX 148
 FUQUAY-VARINA, NC 27526
 (919) - 567 - 1963

PLOT PLAN
FOR
H & H HOMES
LEXINGTON PLANTATION
LOT 642
PITTFIELD RUN
NORTH CAROLINA
HARNETT COUNTY ANDERSON CREEK TOWNSHIP

DRAWN BY NMF	DATE 3/1/18
CHECKED BY MPG	SCALE 1" = 30'