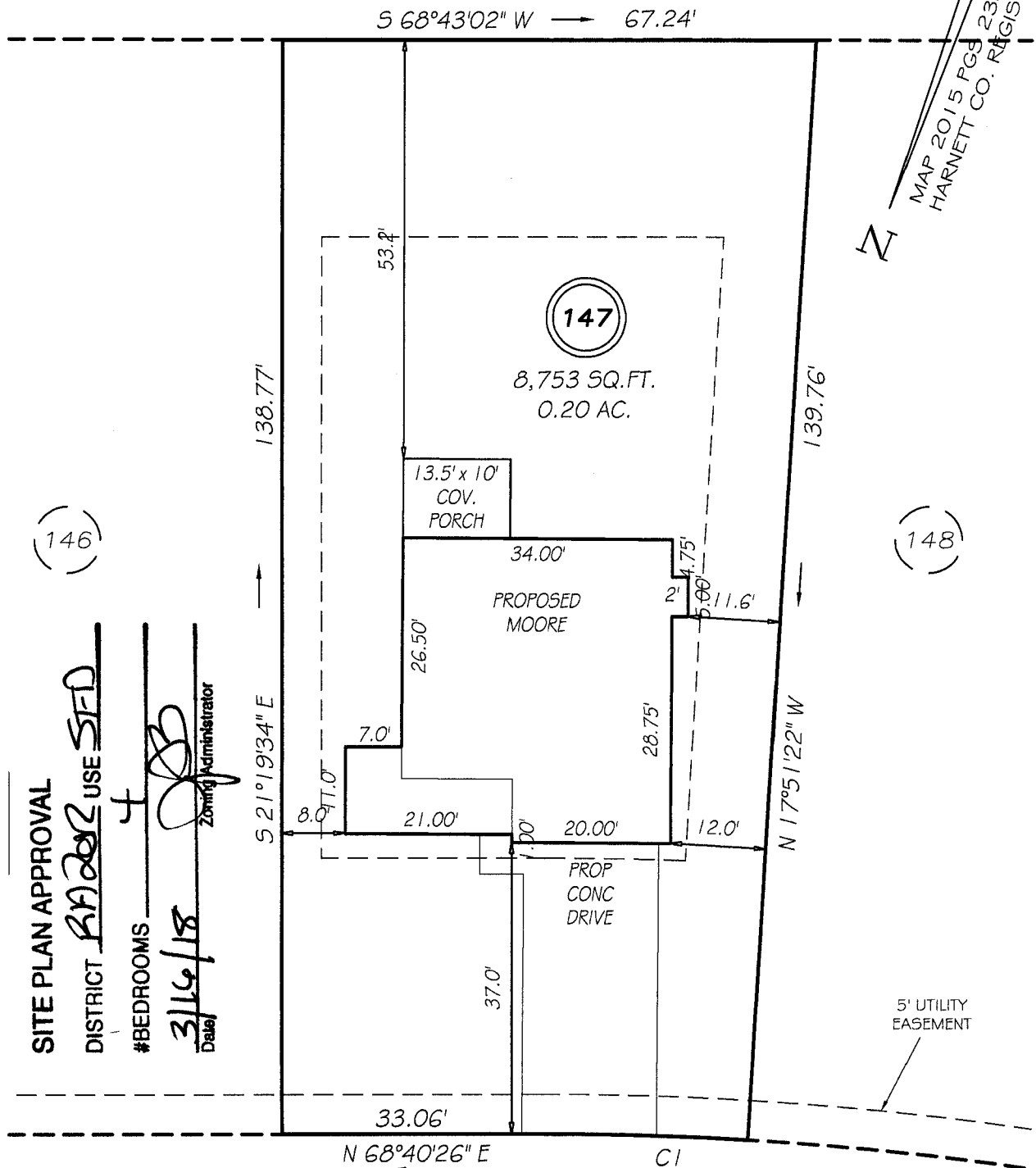


I, MICHAEL P. GRIFFIN, certify that under my direction and supervision this map was drawn from an actual field survey; that the error of closure of the survey as calculated by coordinates is 1: 10,000+; that the area shown hereon was calculated by coordinates.

Witness my hand and seal this day of MONTH 2008.

UNITED STATES OF AMERICA
 C/O US ARMY CORPS OF ENGINEERS
 PIN 0505-80-0917
 DB 1184 PG 403

MAP 2015 PGS 238-239, 258-259
 HARNETT CO. REGISTRY



SITE PLAN APPROVAL
 DISTRICT RA202 USE SFD
 #BEDROOMS 4
 Date 3/16/18
 Zoning Administrator

FALLS CREEK DRIVE
 50' PRIVATE R/W

SETBACKS

FRONT	30'
REAR	25'
ONE SIDE	10'
CORNER SIDE	20'

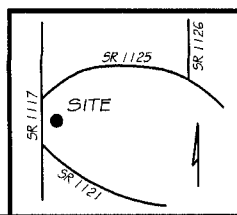
REVISION: NEW PLANS 1/24/18
 REVISION: ADD WRAP 10/19/17

CI R=425.00' L=25.74' N70°24'32"E 25.73'

PRELIMINARY
 NOT FOR RECORDATION,
 SALES OR CONVEYANCE

LEGEND

EIP	EXISTING IRON PIPE	FES	FLARED END SECTION
IPS	IRON PIPE SET	WM	WATER METER
RAW	RIGHT OF WAY	CO	CLEAN OUT
N/F	NOW OR FORMERLY	FH	FIRE HYDRANT
EIS	EXISTING IRON STAKE	CB	CATCH BASIN



GLS INC GRIFFIN LAND SURVEYING, INC.
 P.O. BOX 148
 FUQUAY-VARINA, NC 27526
 (919) - 567 - 1963

DRAWN BY <u>NMF</u>	DATE <u>10/3/17</u>
CHECKED BY <u>MPG</u>	SCALE <u>1" = 20'</u>

PLOT PLAN
 FOR
H & H HOMES
 ANDERSON CREEK CLUB
 LOT 147
 FALLS CREEK DRIVE
 NORTH CAROLINA
 HARNETT COUNTY ANDERSON CREEK TOWNSHIP