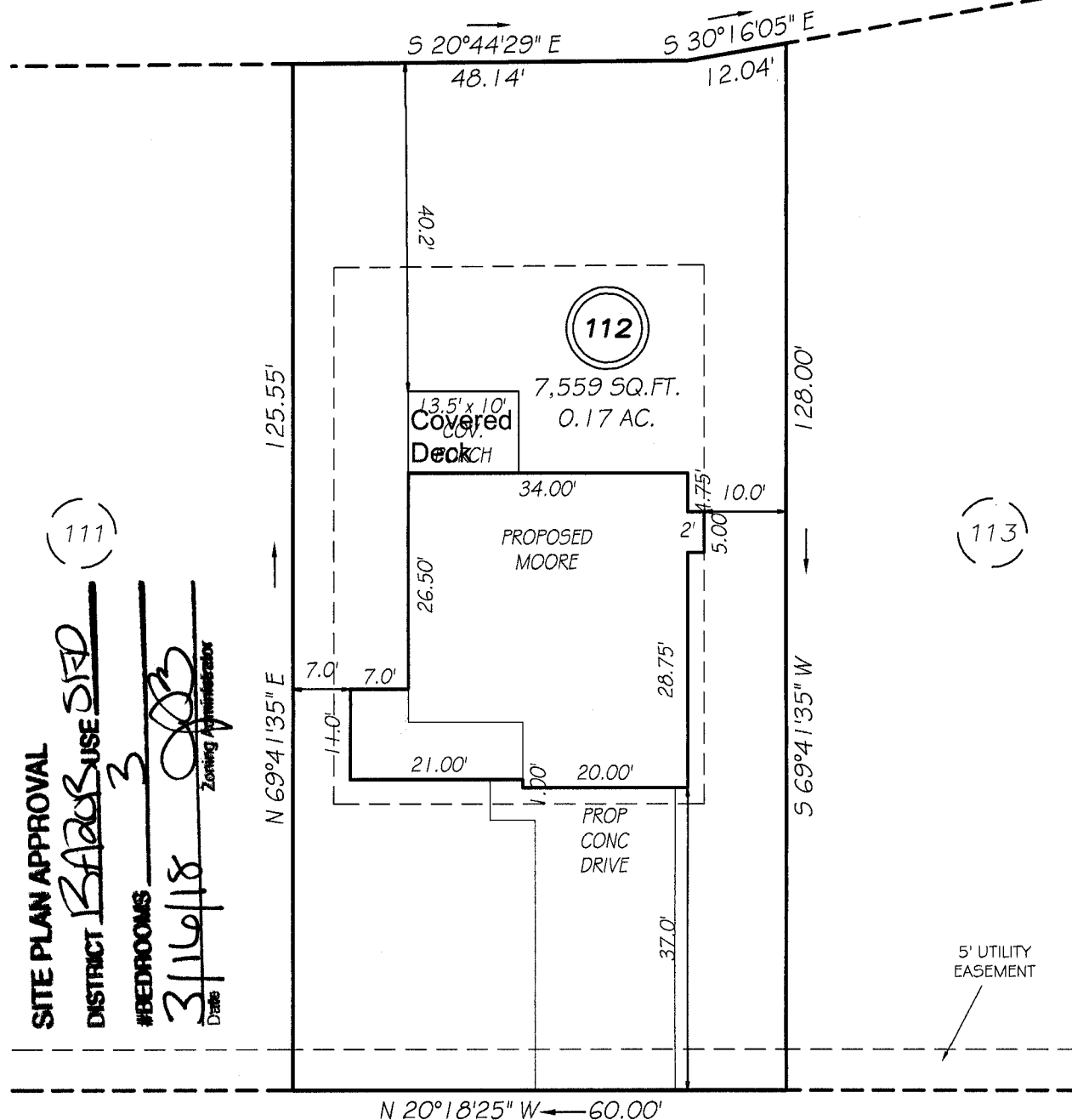


I, MICHAEL P. GRIFFIN, certify that under my direction and supervision this map was drawn from an actual field survey; that the error of closure of the survey as calculated by coordinates is 1: 10,000+; that the area shown hereon was calculated by coordinates.

Witness my hand and seal this day of MONTH 2018.

MAP 2017 PG 245
HARNETT CO. REGISTRY

OPEN SPACE
WETLANDS



SITE PLAN APPROVAL
DISTRICT BA203 USE STD
#BEDROOMS 3
3/16/18
 Date
 Zoning Administrator

WILDLIFE BRIDGE COURT

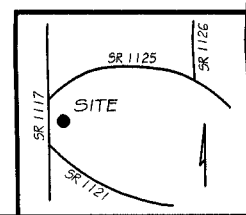
50' PRIVATE RW

SETBACKS

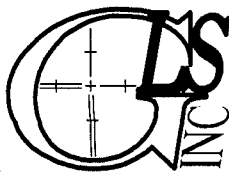
FRONT	35'
REAR	25'
SIDE	5'

LEGEND

EIP	EXISTING IRON PIPE	FES	FLARED END SECTION
IPS	IRON PIPE SET	WM	WATER METER
R/W	RIGHT OF WAY	CO	CLEAN OUT
N/F	NOW OR FORMERLY	FH	FIRE HYDRANT
EIS	EXISTING IRON STAKE	CB	CATCH BASIN



PRELIMINARY
 NOT FOR RECORDATION,
 SALES OR CONVEYANCE



GRIFFIN LAND SURVEYING, INC.

P.O. BOX 148
 FUQUAY-VARINA, NC 27526
 (919) - 567 - 1963

PLOT PLAN
FOR

H & H HOMES

ANDERSON CREEK CLUB

LOT 112

WILDLIFE BRIDGE COURT
 NORTH CAROLINA

HARNETT COUNTY ANDERSON CREEK TOWNSHIP

DRAWN BY NMF DATE 1/29/18

CHECKED BY MPG SCALE 1" = 20'