

I, MICHAEL P. GRIFFIN, certify that under my direction and supervision this map was drawn from an actual field survey; that the error of closure of the survey as calculated by coordinates is 1:10,000+; that the area shown hereon was calculated by coordinates.
 Witness my hand and seal this day of MONTH 2018.

(289)

FUTURE DEVELOPMENT

157.63
 BK 2016 PG 47-48
 HARNETT CO. REGISTRY

N 38°32'42" E

SITE PLAN APPROVAL

DISTRICT ~~2~~ ~~3~~ ~~4~~ ~~5~~ ~~6~~ ~~7~~ ~~8~~ ~~9~~ ~~10~~ ~~11~~ ~~12~~ ~~13~~ ~~14~~ ~~15~~ ~~16~~ ~~17~~ ~~18~~ ~~19~~ ~~20~~ ~~21~~ ~~22~~ ~~23~~ ~~24~~ ~~25~~ ~~26~~ ~~27~~ ~~28~~ ~~29~~ ~~30~~ ~~31~~ ~~32~~ ~~33~~ ~~34~~ ~~35~~ ~~36~~ ~~37~~ ~~38~~ ~~39~~ ~~40~~ ~~41~~ ~~42~~ ~~43~~ ~~44~~ ~~45~~ ~~46~~ ~~47~~ ~~48~~ ~~49~~ ~~50~~ ~~51~~ ~~52~~ ~~53~~ ~~54~~ ~~55~~ ~~56~~ ~~57~~ ~~58~~ ~~59~~ ~~60~~ ~~61~~ ~~62~~ ~~63~~ ~~64~~ ~~65~~ ~~66~~ ~~67~~ ~~68~~ ~~69~~ ~~70~~ ~~71~~ ~~72~~ ~~73~~ ~~74~~ ~~75~~ ~~76~~ ~~77~~ ~~78~~ ~~79~~ ~~80~~ ~~81~~ ~~82~~ ~~83~~ ~~84~~ ~~85~~ ~~86~~ ~~87~~ ~~88~~ ~~89~~ ~~90~~ ~~91~~ ~~92~~ ~~93~~ ~~94~~ ~~95~~ ~~96~~ ~~97~~ ~~98~~ ~~99~~ ~~100~~

(302)

(303)

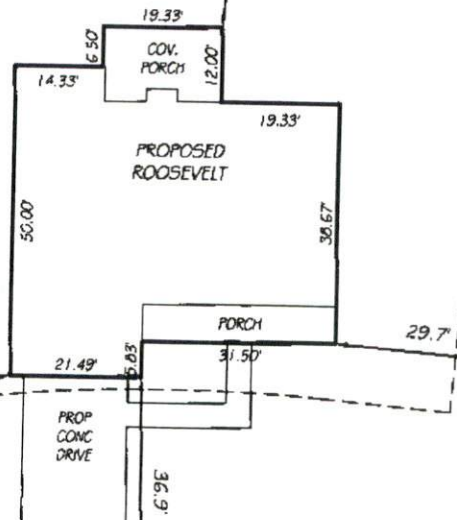
26,199 SQ.FT.
 0.60 AC.

S 51°27'18" E

(304)

217.19'

200.00'



5' UTILITY EASEMENT

C1

S 38°32'42" W

SUNNYBROOK LANE
 50' RW (PUBLIC & UTILITY ACCESS)

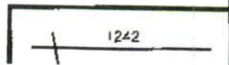
SETBACKS

FRONT	35'
REAR	25'
SIDE	10'

REVISION: LEFT HAND 2/19/18

C1 R=255.00' L=69.01' S30°47'31"W 68.80'

LEGEND



SOUTHEASTERN SOIL & ENVIRONMENTAL ASSOC., INC.

PROPOSED SUBSURFACE WASTE DISPOSAL SYSTEM DETAIL SHEET

SUBDIVISION: OAKMONT

LOT 303

INITIAL SYSTEM: APPROVED 25% REDUCTION

REPAIR APPROVED 25% REDUCTION

DISTRIBUTION: SERIAL

DISTRIBUTION SERIAL

BENCHMARK: 100.0

LOCATION CONTRAL #3003

NO. BEDROOMS: 5

LTAR 0.8 GPD/FT²

LINE FLAG COLOR ELEVATION LENGTH

In. feed
system

1	O	103.94	60'
2	B	102.58	25'
3	O	102.34	25'
			<u>210'</u>

4	B	101.58	70'
5	O	100.58	70'
6	B	100.08	70'
			<u>210'</u>

BY M. FAIKER

DATE 03/2015

TYPICAL PROFILE

THERE SHALL BE NO GRADING,
CUTTING, LOGGING OR OTHER SOIL
DISTURBANCE IN SEPTIC AREA

0-48 s/LS (VFr, comp)
cr 2 > 48"
INSTALL AT 18-24"

