



**ECS Southeast, LLP**

6151 Raeford Road  
Suite A  
Fayetteville, NC 28304  
(910) 401-3288 [Phone]  
(910) 323-0539 [Fax]

**LETTER OF TRANSMITTAL**

December 17, 2018

Precision Custom Homes  
256 Briar Hill Rd.  
Raeford, NC 28376

ATTN: Mr. Allen Peterson

RE: **Lot 8 Apache Trail**

ECS Job # **33:4426-C1**

Permits:

Location: **260 Apache Trail  
Sanford, NC**

We are enclosing:

- Field Reports
- For your use
- As requested

CC: **Precision Custom Homes - Shaun Gardner**

ENCL:

Field Report # 1      12/13/2018

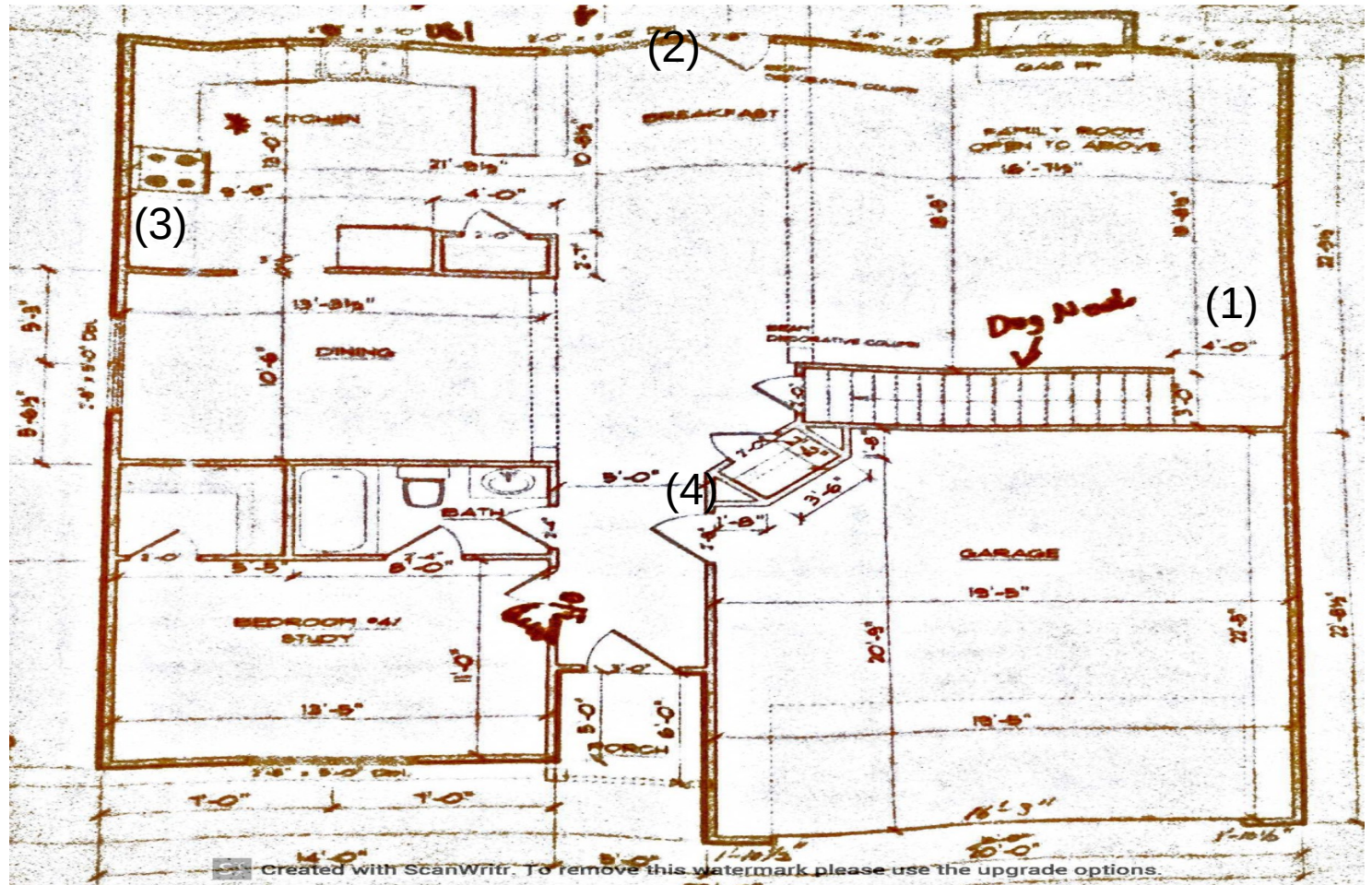
*Dennis Lowery*  
 Dennis D. Lowery, P.E. 043840  
 Project Engineer  
 DEC 17 2018

*Donny Johnson*  
 Donny Johnson  
 Field Services Manager

*Disclaimer*

1. This report (and any attachments) shall not be reproduced except in full without prior written approval of ECS.
2. The information in this report relates only to the activities performed on the report date.
3. Where appropriate, this report includes statements as to compliance with applicable project drawings and specifications for the activities performed on this report date.
4. Incomplete or non-conforming work will be recorded for future resolution.
5. The results of samples and/or specimens obtained or prepared for subsequent laboratory testing will be presented in separate reports/documents.





Bryan Hernandez  
12/13/2018  
265 Apache Trl  
Proj # 4426-C1  
W/O # 49650

Key

( ) = Location of DCP's



## Report of Spread Footing - Foundation Observations

Project: Lot 8 Apache Trail

Project No. 4426-C1

Location: 260 Apache Trail  
Sanford - Lee - NC - 27332

Day/Date: 12/13/2018

Contractor: Precision Custom Homes

Footing Number	Location	Size (W x H x L)		Footing Bottom Elevation		Description of Subgrade Material	Required Blow Counts		Design Bearing Pressure
		Design	Actual	Design	Depth of Undercut (in)		# of Blows / increment		
1	1	x x	x x	N/A	0	Orange SAND	6		2000
							8,9,9		
1	1	x x	x x	N/A	-1	Black SAND	6		2000
							8,10,10		
1	1	x x	x x	N/A	-2	Brown SAND	6		2000
							8,10,10		
1	1	x x	x x	N/A	-3	Brown SAND	6		2000
							8,10,10		
2	2	x x	x x	N/A	0	Orange SAND	6		2000
							3,5,5		
2	2	x x	x x	N/A	-1	Orange SAND	6		2000
							7,9,10		
2	2	x x	x x	N/A	-2	Brown SAND	6		2000
							9,9,10		
2	2	x x	x x	N/A	-3	Black SAND	6		2000
							10,10,10		
3	3	x x	x x	N/A	0	Orange SAND	6		2000
							7,6,7		

By: Bryan Noel Hernandez

\_\_\_\_\_  
ECS Southeast, LLP



## Report of Spread Footing - Foundation Observations

Project: Lot 8 Apache Trail

Project No. 4426-C1

Location: 260 Apache Trail  
Sanford - Lee - NC - 27332

Day/Date: 12/13/2018

Contractor: Precision Custom Homes

Footing Number	Location	Size (W x H x L)		Footing Bottom Elevation		Description of Subgrade Material	Required Blow Counts	Design Bearing Pressure
		Design	Actual	Design	Depth of Undercut (in)		# of Blows / increment	
3	3	x x	x x	N/A	-1	Orange SAND	6	2000
							8,10,11	
3	3	x x	x x	N/A	-2	Brown SAND	6	2000
							8,12,12	
3	3	x x	x x	N/A	-3	Black SAND	6	2000
							8,9,9	
4	4	x x	x x	N/A	0	Orange SAND	6	2000
							8,8,10	
4	4	x x	x x	N/A	-1	Brown SAND	6	2000
							8,9,9	
4	4	x x	x x	N/A	-2	Brown SAND	6	2000
							8,10,11	
4	4	x x	x x	N/A	-3	Brown SAND	6	2000
							8,10,10	

By: Bryan Noel Hernandez

ECS Southeast, LLP