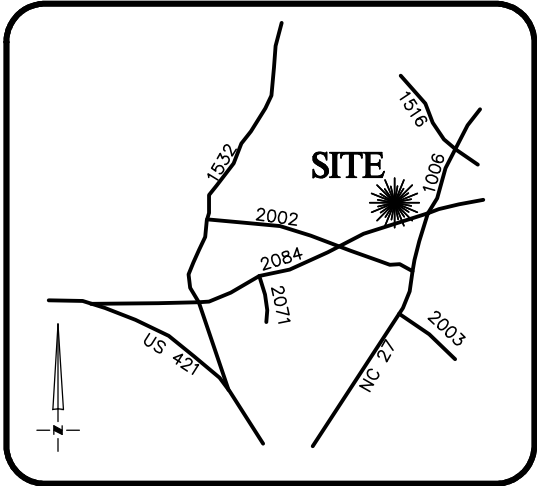


THIS IS TO CERTIFY THAT ON THE 27th DAY OF JANUARY 2018 AN ACTUAL SURVEY WAS DONE UNDER MY SUPERVISION OF THE PROPERTY SHOWN HERON, THIS MAP IS NOT INTENDED TO MEET GS 47-30 RECORDING REQUIREMENTS.



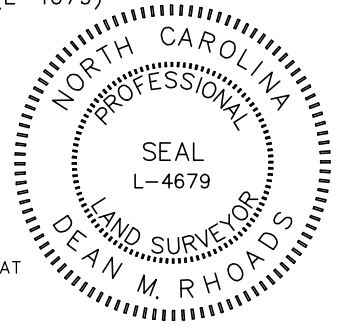
SIGNED _____
DEAN M. RHOADS, PLS (L-4679)



VICINITY MAP
Not To Scale

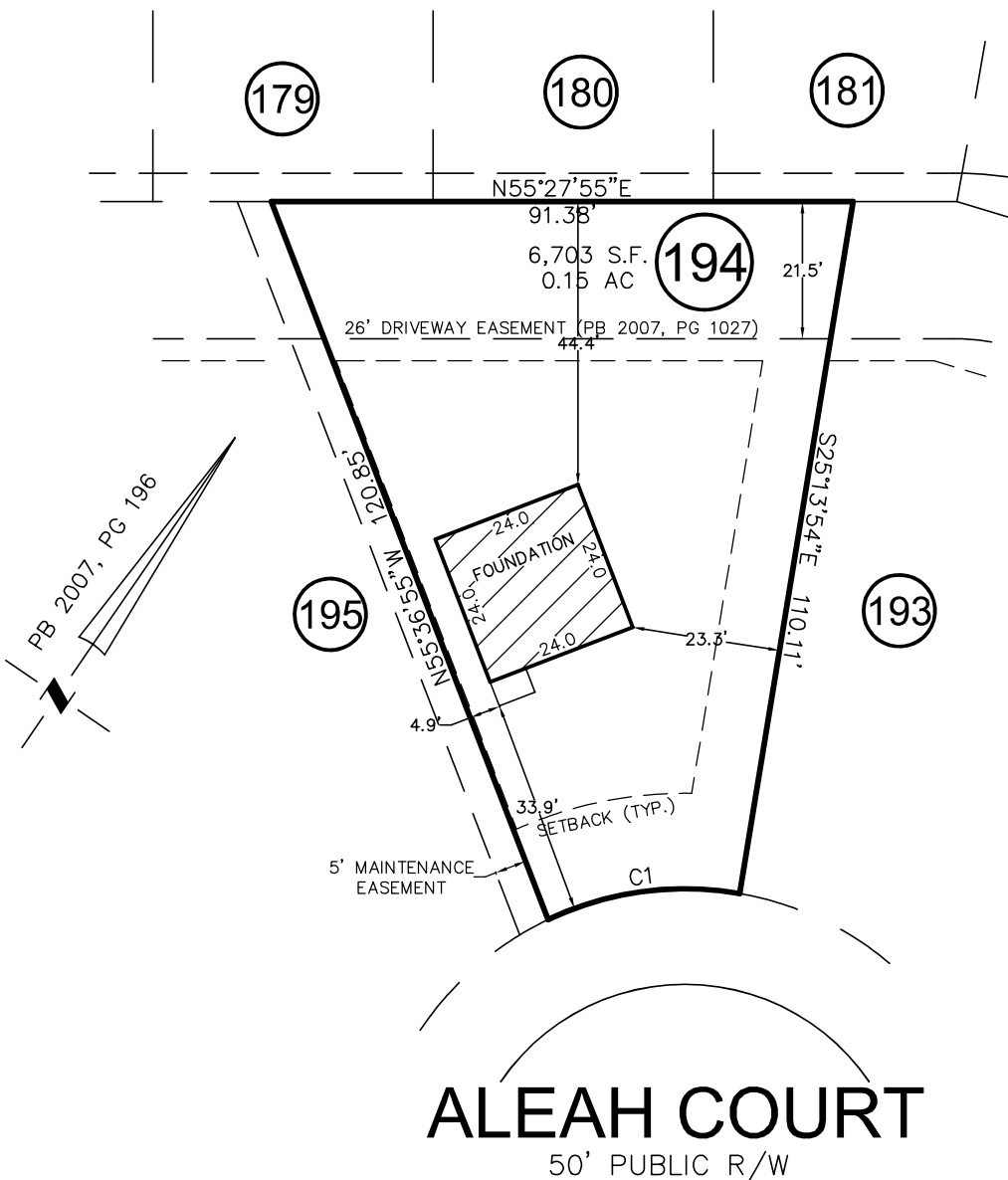
LEGEND

- E.I.P. EXISTING IRON PIN
- E.C.M. EXISTING CONCRETE MONUMENT
- S.I.P. SET IRON PIN
- P.D.E. PUBLIC DRAINAGE EASEMENT
- S.D.E. STORM DRAINAGE EASEMENT
- P.U.E. PUBLIC UTILITY EASEMENT
- S.S.E. SANITARY SEWER EASEMENT
- F.P.E. FLOOD PROTECTION ELEVATION
- CLOSURE EXCEEDS 1 INCH in 10,000'
- SETBACK LINE
- ===== PROPERTY LINE
- - - - - ADJOINER PROPERTY LINE BY DEED OR PLAT



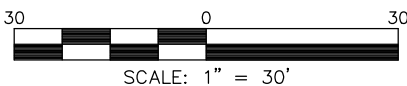
SETBACKS:

- FRONT - 15' w/PARKING IN REAR
- FRONT - 30' w/PARKING IN FRONT
- REAR - 25'
- NEAR SIDE - 0.5' MIN 5' MAX
- OPEN SIDE - 10'
- WINDOW/DOOR - 6'



CURVE	RADIUS	ARC LENGTH	CH LENGTH	CH BEARING
C1	50.00'	30.88'	30.39'	S47°42'10\"W

THIS PROPERTY MAY BE SUBJECT TO ANY AND ALL APPLICABLE DEED RESTRICTIONS, EASEMENTS, RIGHT-OF-WAY, UTILITIES AND RESTRICTIVE COVENANTS WHICH MAY BE OF RECORD OR IMPLIED



**RESIDENTIAL
LAND SERVICES, PLLC.**

1500 Piney Plains Road, Suite 102
Cary, North Carolina 27518
Phone (919) 977-1554
Firm License # P-0873

FOUNDATION SURVEY

FOR
#88 ALEAH COURT

LOT 194, MEADOWS AT BUIES CREEK, PHASE 7B
Neill's Creek Township, Harnett County, North Carolina

PROPERTY OF: WADE JOURNEY HOMES

MAP BOOK 2007 PAGE 196 DEED REFERENCE _____

DRAWN BY: JME

DATE: JANUARY 27, 2018