

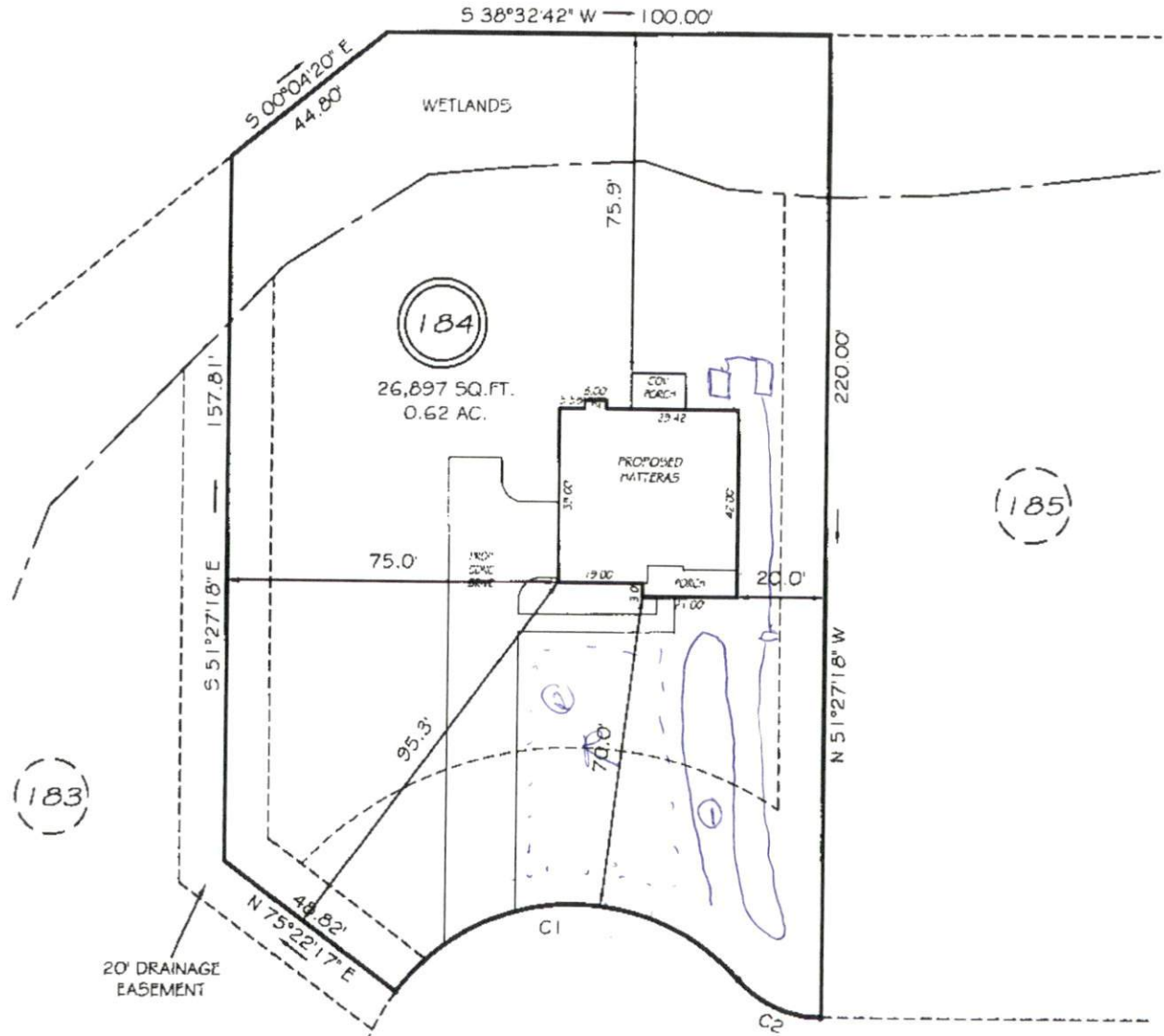
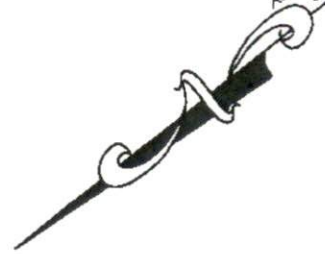




I, MICHAEL P. GRIFFIN, certify that under my direction and supervision this map was drawn from an actual field survey; that the error of closure of the survey as calculated by coordinates is 1: 10,000+; that the area shown hereon was calculated by coordinates.  
 Witness my hand and seal this day of MONTH 2017.

BR 2016 PG 47-48  
 HARRIETT CO. REGISTRY

FUTURE DEVELOPMENT



**SITE PLAN APPROVAL**  
 DISTRICT R200R USE SED  
 #BEDROOMS 3  
10/6/17  
 Date Zoning Administrator

**HEATHERWOOD DRIVE**  
 50' RW (PUBLIC & UTILITY ACCESS)

*NEED 80' FRONT SETBACK*

**SETBACKS**

FRONT	35'
REAR	25'
SIDE	10'

REVISION: LEFT HAND SIDE ENTRY, BACK, RIGHT 8/29/17  
 C1 R=50.00' L=88.45' N36°03'11\"/>

SOUTHEASTERN SOIL & ENVIRONMENTAL ASSOC., INC.

PROPOSED SUBSURFACE WASTE DISPOSAL SYSTEM DETAIL SHEET

SUBDIVISION: OAKMONT

LOT 184

INITIAL SYSTEM: APPROVED 25% REDUCTION

REPAIR APPROVED 25% REDUCTION

DISTRIBUTION: D-Box

DISTRIBUTION D-BOX

BENCHMARK: 100.0

LOCATION PT ON LINE 184/185

NO. BEDROOMS: 3

LTAR 0.5 GPD/FT<sup>2</sup>

LINE	FLAG COLOR	ELEVATION	LENGTH
1	P	99.25	60'
2	W	98.25	60'
3	P	97.75	60'
			<u>180'</u>
4	W	97.50	60'
5	P	96.92	60'
6	W	96.42	60'
			<u>180'</u>

Initial system

BY M. EAKER

DATE 03/2015

TYPICAL PROFILE

0-24 WS (VF, wq)  
24-44+50 (F, 164)  
C/2/pm > 40"  
INSTALL AT 13"

THERE SHALL BE NO GRADING,  
 CUTTING, LOGGING OR OTHER SOIL  
 DISTURBANCE IN SEPTIC AREA



