

**SOIL/SITE EVALUATION
 for ON-SITE WASTEWATER SYSTEM**

Owner: Applicant: *Moss Home Bldg*
 Address: *339 River Rd* Date Evaluated: *09/15/17*
 Proposed Facility: *432 SFD* Design Flow (.1949): *480* Property Size: *1.74 AC*
 Location of Site: *432 SFD* Property Recorded:
 Water Supply: Public Individual Well Spring Other
 Evaluation Method: Auger Boring Pit Cut Mixed
 Type of Wastewater: Sewage Industrial Process

P R O F I L E #	.1940 Landscape Position/ Slope %	Horizon Depth (In.)	SOIL MORPHOLOGY .1941		OTHER PROFILE FACTORS				Profile Class & LTAR
			.1941 Structure/ Texture	.1941 Consistence Mineralogy	.1942 Soil Wetness/ Color	.1943 Soil Depth (IN.)	.1956 Sapro Class	.1944 Restr Horiz	
<i>1, 2, 3</i>	<i>L 3%</i>	<i>0-6</i>	<i>CR LS</i>	<i>VFL NSWP clay</i>					<i>UNABLE</i>
		<i>6+</i>	<i>River Stone</i>	<i>—</i>		<i>ROCK</i>			<i>TO EVAL</i>
<i>A</i>	<i>L 3%</i>	<i>0-18</i>	<i>GR LS</i>	<i>VFL SHR clay</i>					<i>PS</i>
		<i>18-40</i>	<i>BK SL</i>	<i>FI S P clay</i>		<i>40</i>			<i>0.35</i>
<i>B</i>	<i>L 3%</i>	<i>0-22</i>	<i>GR LS</i>	<i>VFL SHR clay</i>					<i>PS</i>
		<i>22-42</i>	<i>BK SL</i>	<i>FI S P clay</i>		<i>42</i>			<i>0.35</i>
<i>C/D</i>	<i>L 3%</i>	<i>0-12</i>	<i>GR LS</i>	<i>VFL SHR clay</i>					<i>PS</i>
		<i>12-40</i>	<i>BK SL</i>	<i>FI S P clay</i>		<i>40</i>			<i>0.35</i>

Description	Initial System	Repair System	Other Factors (.1946):
Available Space (.1945)	<i>✓</i>	<i>✓</i>	Site Classification (.1948): <i>Provisionally suitable</i>
System Type(s)	<i>2 1/2" cd</i>	<i>2 1/2" cd</i>	Evaluated By: <i>Andrew Curran, AETP</i>
Site LTAR	<i>0.35</i>	<i>0.35</i>	Others Present:

COMMENTS: _____

LANDSCAPE POSITIONS	GROUP	TEXTURES	.1955 LTAR	CONSISTENCE MOIST	WET
R-RIDGE	I	S-SAND	1.2 - 0.8	VFR-VERY FRIABLE FR-FRIABLE	NS-NON-STICKY SS-SLIGHTLY STICKY
S-SHOULDER SLOPE		LS-LOAMY SAND			
L-LINEAR SLOPE	II	SL-SANDY LOAM	0.8 - 0.6	FI-FIRM VFI-VERY FIRM	S-STICKY VS-VERY STICKY
FS-FOOT SLOPE		L-LOAM			
N-NOSE SLOPE	III	SI-SILT	0.6 - 0.3	EFI-EXTREMELY FIRM	NP-NON-PLASTIC SP-SLIGHTLY STICKY P-PLASTIC VP-VERY PLASTIC
H-HEAD SLOPE		SIL-SILT LOAM			
CC-CONCLAVE SLOPE		CL-CLAY LOAM			
CV-CONVEX SLOPE		SCL-SANDY CLAY LOAM			
T-TERRACE	IV	SIC-SILTY CLAY	0.4 - 0.1		
FP-FLOOD PLAN		C-CLAY			
		SC-SANDY CLAY			

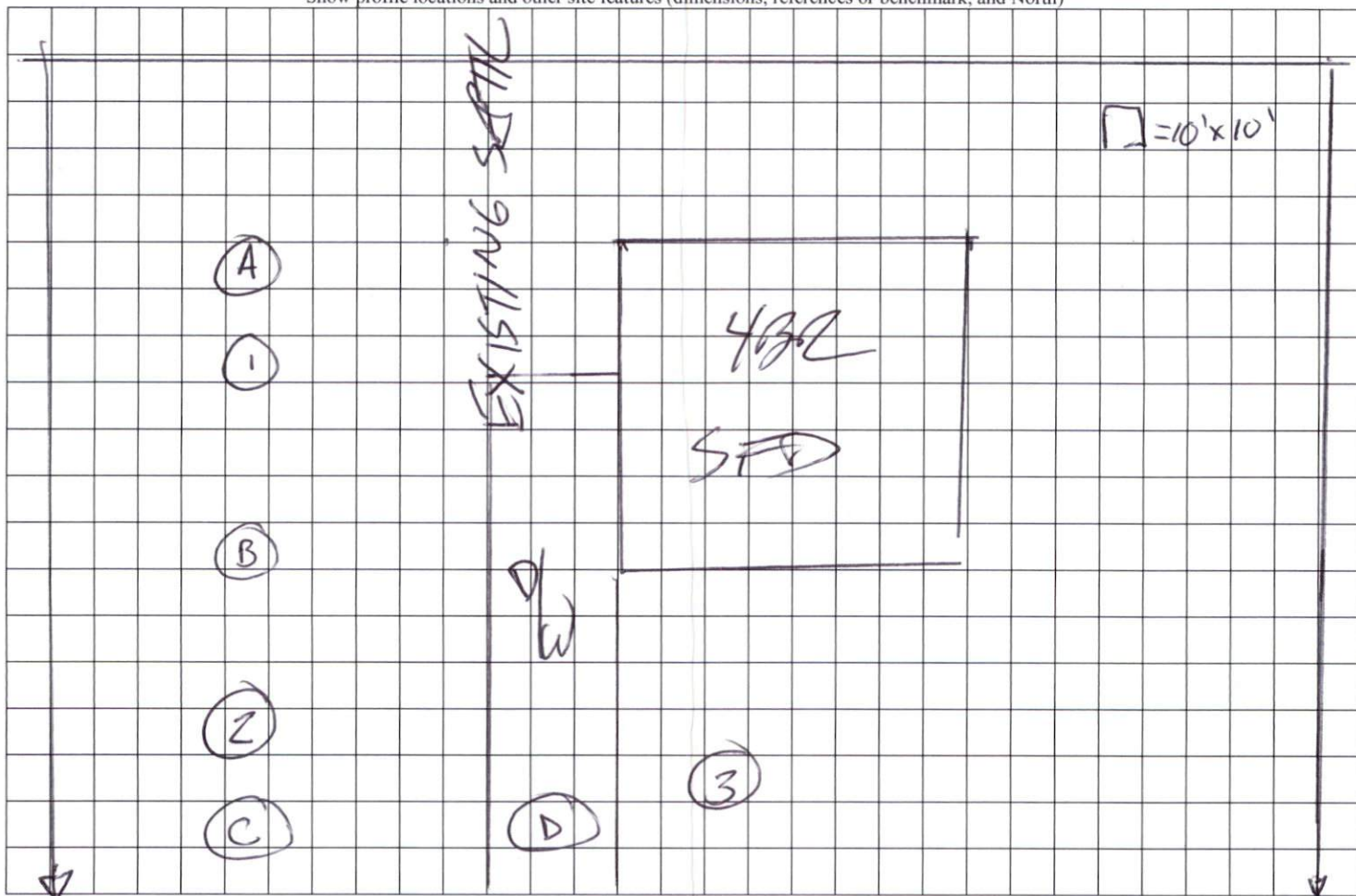
STRUCTURE

- SG-SINGLE GRAIN
- M- MASSIVE
- CR-CRUMB
- GR-GRANULAR
- SBK-SUBANGULAR BLOCKY
- ABK-ANGULAR BLOCKY
- PL-PLATY
- PR-PRISMATIC

MINERALOGY

- SLIGHTLY EXPANSIVE
- EXPANSIVE

Show profile locations and other site features (dimensions, references or benchmark, and North)



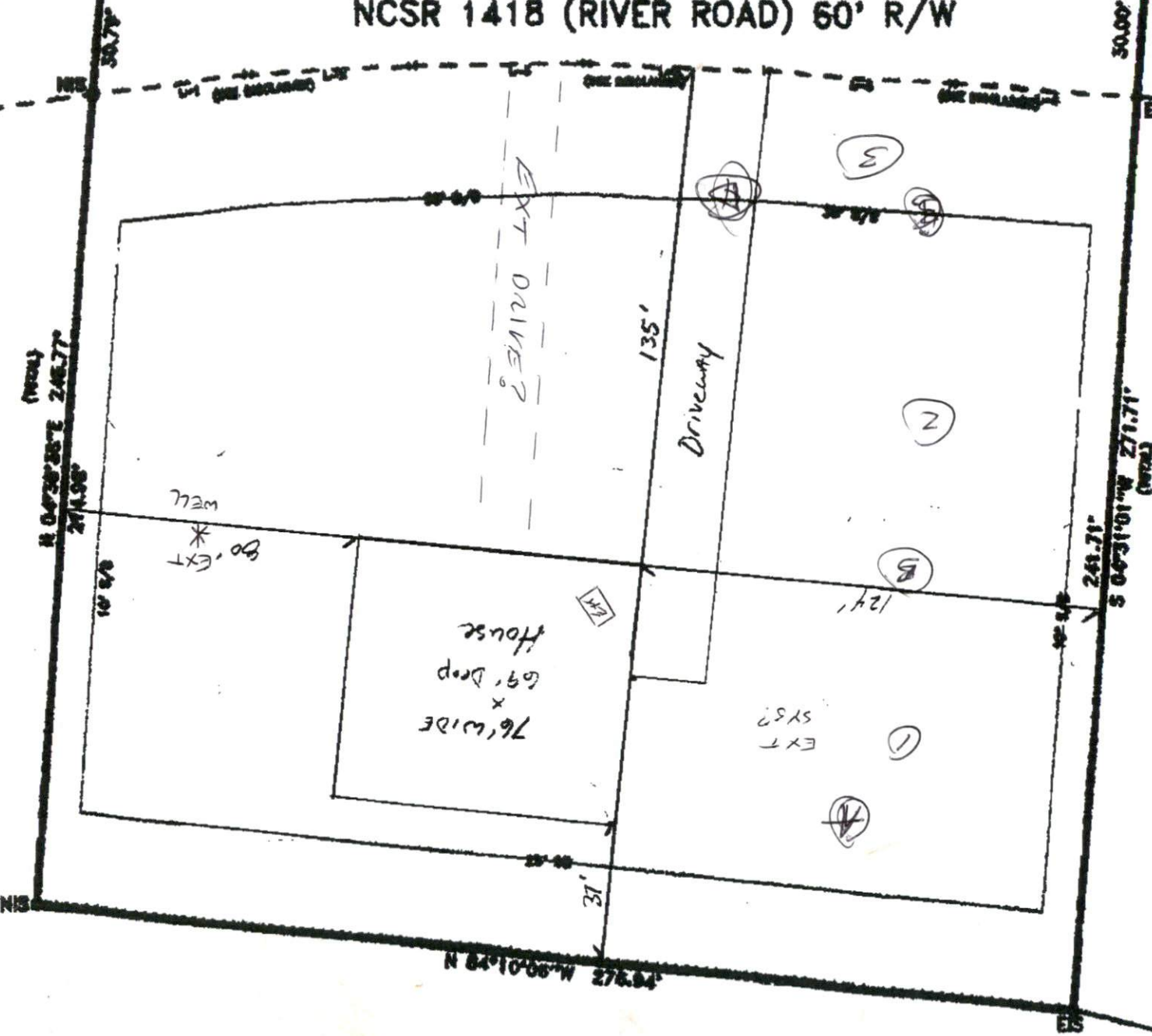
EXISTING WATERMAIN

N 07°07'01"W
31.71'

S 88°18'38"E
282.78'

NCSR 1418 (RIVER ROAD) 60' R/W

30.00'



SITE PLAN APPROVAL
 DISTRICT CMS USE SED
 #BEDROOMS 3
6-22-17 dyansm
 ZONING ADMINISTRATOR

JAMIE TODD SMITH
 Kristien Brook Smith
 1.74 Acres
 1" = 40'