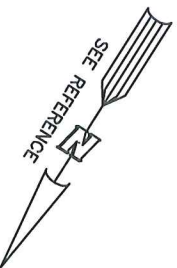


AS-BUILT IMPROVEMENTS FOR
ROYAL OAKS BUILDING GROUP, LLC
 25 ABACO COURT
 LOT 41, ATKINS VILLAGE, PHASE THREE
 BLACK RIVER TOWNSHIP, HARNETT COUNTY, NORTH CAROLINA



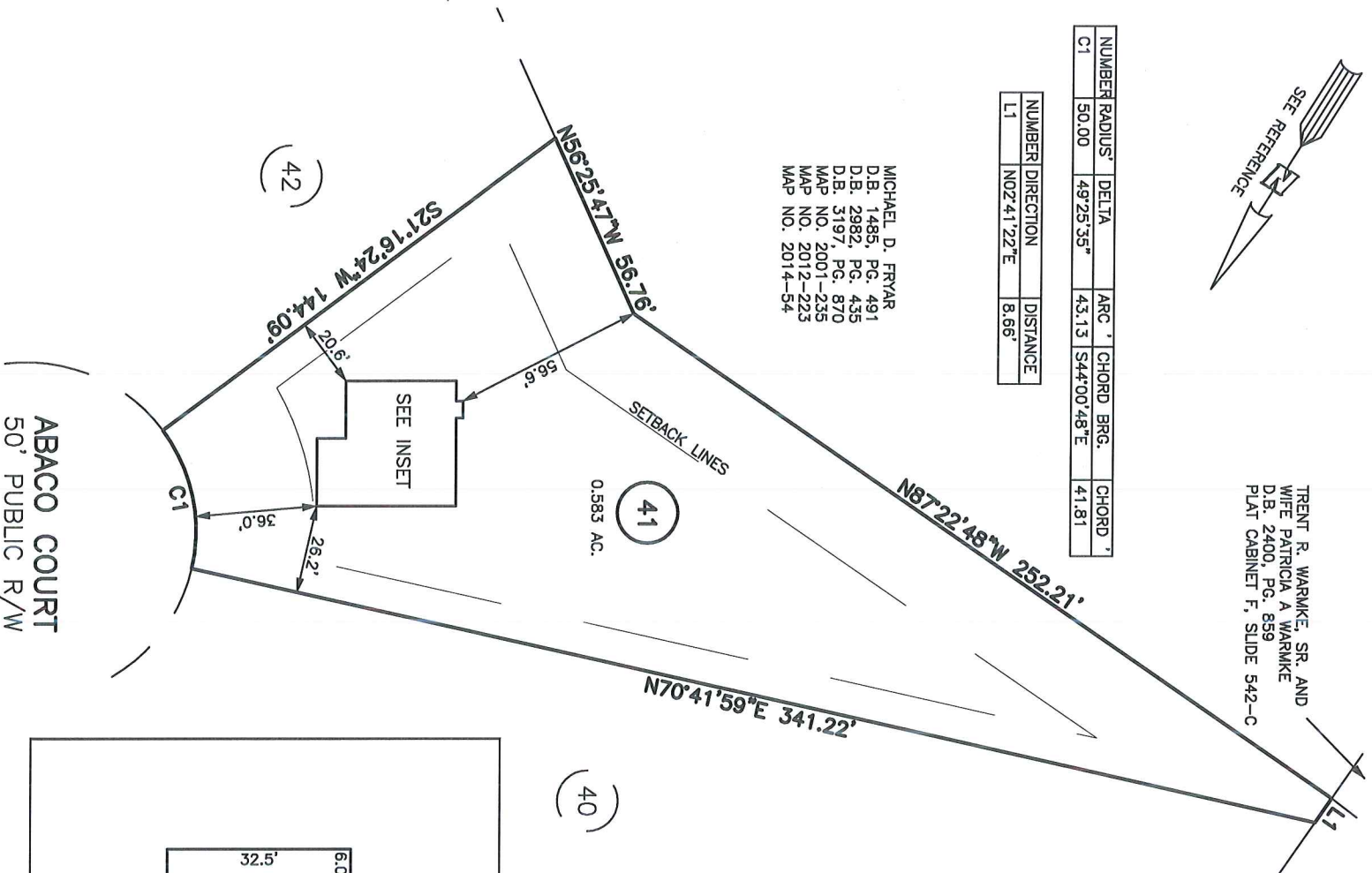
TRENT R. WARWICK, SR. AND
 WIFE PATRICIA A WARWICK
 D.B. 2400, PG. 859
 PLAT CABINET F, SLIDE 542-C

WIFE CATHY TAYLOR HAIR
 D.B. 1419, PG. 693
 D.B. 1448, PG. 394
 D.B. 1654, PG. 834
 D.B. 2128, PG. 476

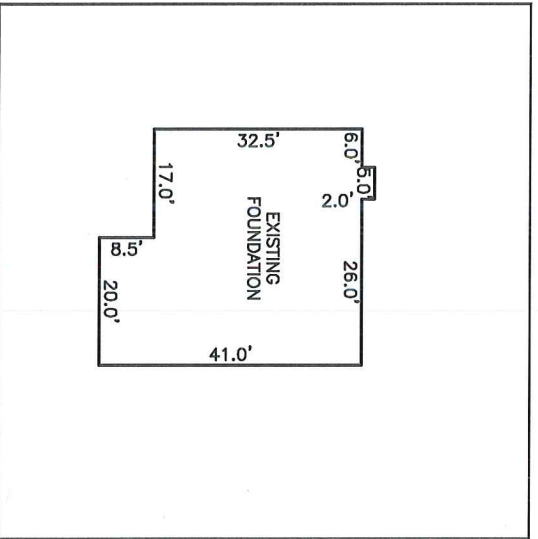
NUMBER	RADIUS'	DELTA	ARC'	CHORD BRG.	CHORD'
C1	50.00	49°25'35"	43.13	S44°00'48"E	41.81

NUMBER	DIRECTION	DISTANCE
L1	N02°41'22"E	8.66'

MICHAEL D. FRYAR
 D.B. 1485, PG. 491
 D.B. 2982, PG. 435
 D.B. 3197, PG. 870
 MAP NO. 2001-2355
 MAP NO. 2012-223
 MAP NO. 2014-54



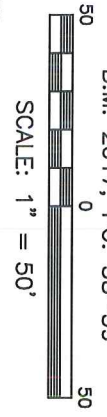
- LEGEND**
- BFP BACK FLOW PREVENTER
 - CURB INLET
 - CLEANOUT
 - EGM EXISTING CONCRETE MONUMENT
 - EDP EXISTING DRILL HOLE
 - EIP EXISTING IRON PIPE
 - EM EXISTING ELECTRIC METER
 - EPK EXISTING PK NAIL
 - ES ELECTRIC STUB
 - FLR FLARED END SECTION
 - FHR FIRE HYDRANT
 - FOP FIBER OPTIC PEDESTAL
 - GM GAS METER
 - INVT INVERT
 - LIHT LIGHT POLE
 - MANHOLE SANITARY SEWER
 - NIP NEW IRON PIPE
 - NPK NEW PK NAIL
 - OHV OVERHEAD WIRES
 - PNS POINT NOT SET
 - PUE PUBLIC UTILITY EASEMENT
 - TBC TOP BACK OF CURB
 - TRN TELEPHONE PEDESTAL
 - TRF TRANSFORMER
 - CABLE TV PEDESTAL
 - UTILITY POLE
 - WATER METER
 - WATER INLET
 - YARD INLET
 - FIELD MEASUREMENT



INSET: SCALE: 1" = 30'

SETBACK INFO
 FRONT: 35'
 REAR: 25'
 SIDES: 10'

REFERENCES:
 B.M. 2017, PG. 38-39

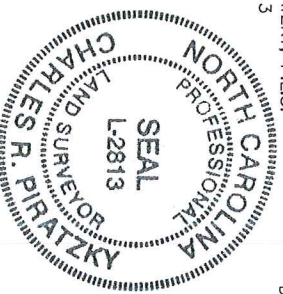


NOTES

1. NOT FOR RECORDING IN MAP BOOKS.
2. THIS SURVEY SUBJECT TO ANY FACTS THAT MAY BE DISCLOSED BY A FULL AND ACCURATE TITLE SEARCH.
3. THIS MAP IS NOT A CERTIFIED SURVEY AND HAS NOT BEEN REVIEWED BY A LOCAL GOVERNMENT AGENCY FOR COMPLIANCE WITH ANY APPLICABLE LAND DEVELOPMENT REGULATIONS

WAKE COUNTY, NORTH CAROLINA
 I CERTIFY THAT THIS MAP WAS DRAWN UNDER MY SUPERVISION FROM AN ACTUAL SURVEY MADE UNDER MY SUPERVISION; THAT THE IMPROVEMENTS LIE WHOLLY UPON THE LOT AND THAT THERE WERE NO ENCROACHMENTS OBSERVED EXCEPT AS SHOWN, AND THAT THE SURVEY IS OF AN EXISTING PARCEL OR PARCELS OF LAND.

CHARLES R. PIRATZKY, P.L.S. DATE: 5-24-17
 L-2813



DATE: MAY 19, 2017

c:\Faddloc\AKM41FDN.txd

RWPK, PA
 engineering ~ surveying
 Corporate License: C-1771
 101 W. Main St., Suite 202
 Garner, NC 27529
 Phone (919) 779-4854
 Fax (919) 779-4056
 C:\AKM\AKM41\AKM41.DWG