

AS-BUILT IMPROVEMENTS FOR
ROYAL OAKS BUILDING GROUP, LLC
 29 AFTON COURT
 LOT 35, ATKINS VILLAGE, PHASE THREE
 BLACK RIVER TOWNSHIP, HARNETT COUNTY, NORTH CAROLINA

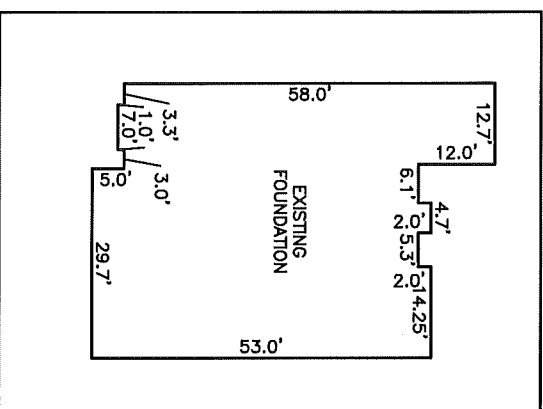
ATKINS PLACE, LLC
 DB 1754, PG. 288
 MAP NO. 2003-1125

STUART ADAMS HAIR AND
 WIFE CATHY TAYLOR HAIR
 D.B. 1419, PG. 693
 D.B. 1448, PG. 394
 D.B. 1654, PG. 834
 D.B. 2128, PG. 476

CARL G. HILKERT AND
 SHEILA A. HILKERT
 DB 2006, PG. 80
 MAP NO. 2003-1125

TRAVIS L. PETERSCHICK
 DB 2822, PG. 283
 MAP 2003-1125

AMANDA E. BOYKIN
 DB 2037, PG. 100
 MAP NO. 2003-1125



INSET: SCALE: 1" = 30'

NUMBER	RADIUS'	DELTA	ARC °	CHORD BRG.	CHORD °
C1	50.00	77°39'23"	67.77	S52°03'52"W	62.70

LEGEND

- BFP BACK FLOW PREVENTER
- CLEANOUT
- EDM EXISTING CONCRETE MONUMENT
- EDH EXISTING DRILL HOLE
- EIS EXISTING IRON STAKE
- EIP EXISTING IRON PIPE
- EM ELECTRIC METER
- EK EXISTING PK NAIL
- ES ELECTRIC STUB
- FA FLEETED BAND SECTION
- FG FIBER OPTIC PEDESTAL
- SM GAS METER
- INV. INVERT
- LIGHT POLE
- MANHOLE SANITARY SEWER
- NDH NEW DRILL HOLE
- NIP NEW IRON PIPE
- NPK NEW PK NAIL
- OHW OVERHEAD WIRES
- PNS POINT NOT SET
- PLC PUBLIC UTILITY EASEMENT
- TBC TOP BACK OF CURB
- TR TRANSFORMER
- TV CABLE TV PEDESTAL
- UP UTILITY POLE
- WATER METER
- WATER VALVE
- YD YARD INLET
- ⌒ FIELD MEASUREMENT

N71°57'05"W 451.92'

S89°13'18"E 480.66'

S00°53'34"W 94.95'

CLAYTON W. DAVIS
 DB 2076, PG. 91
 MAP NO. 2003-1125

AFTON COURT
 50' PUBLIC R/W

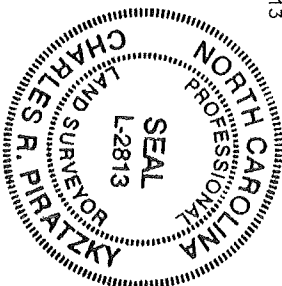
WAKE COUNTY, NORTH CAROLINA

I CERTIFY THAT THIS MAP WAS DRAWN UNDER MY SUPERVISION FROM AN ACTUAL SURVEY MADE UNDER MY SUPERVISION; THAT THE IMPROVEMENTS LIE WHOLLY UPON THE LOT AND THAT THERE WERE NO ENCROACHMENTS OBSERVED EXCEPT AS SHOWN, AND THAT THE SURVEY IS OF AN EXISTING PARCEL OR PARCELS OF LAND.

CHARLES R. PIRATZKY, P.L.S.
 L-2813

DATE

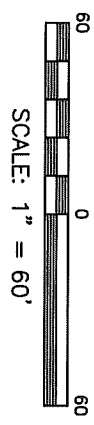
6-14-17



SETBACK INFO

FRONT: 35'
 REAR: 25'
 SIDES: 10'

REFERENCES:
 B.M. 2017, PG. 38-39



NOTES

1. NOT FOR RECORDING IN MAP BOOKS.
2. THIS SURVEY SUBJECT TO ANY FACTS THAT MAY BE DISCLOSED BY A FULL AND ACCURATE TITLE SEARCH.
3. THIS MAP IS NOT A CERTIFIED SURVEY AND HAS NOT BEEN REVIEWED BY A LOCAL GOVERNMENT AGENCY FOR COMPLIANCE WITH ANY APPLICABLE LAND DEVELOPMENT REGULATIONS

DATE: JUNE 10, 2017

d:\fieldloc\AKV35\FDN.txt
 d:\fieldloc\AKV370\PO.txt



engineering ~ surveying
 Corporate License: C-1771
 101 W. Main St. Suite 202
 Garner, NC 27529
 Phone (919) 779-4854
 Fax (919) 779-4056

0A\AKV35\AKV35.DWG