

SOUTHEASTERN SOIL & ENVIRONMENTAL ASSOC., INC.

PROPOSED SUBSURFACE WASTE DISPOSAL SYSTEM DETAIL SHEET

SUBDIVISION: Quail Glen

LOT 24

INITIAL SYSTEM: APPROVED 25% REDUCTION

REPAIR: APPROVED 25% REDUCT

DISTRIBUTION: SERIAL

DISTRIBUTION SERIAL

BENCHMARK: 100.0

LOCATION PC 23/24

NO. BEDROOMS: 4

LTAR 0.4 GPD/FT²

<u>LINE</u>	<u>FLAG COLOR</u>	<u>ELEVATION</u>	<u>LENGTH</u>
-------------	-------------------	------------------	---------------

1	Y	104.00	40'
2	P	103.67	55'
3	B	103.34	75'
4	P	103.08	100'
5	O	102.75	30'
			<u>300'</u>

Frilled system

BY M. EAKER

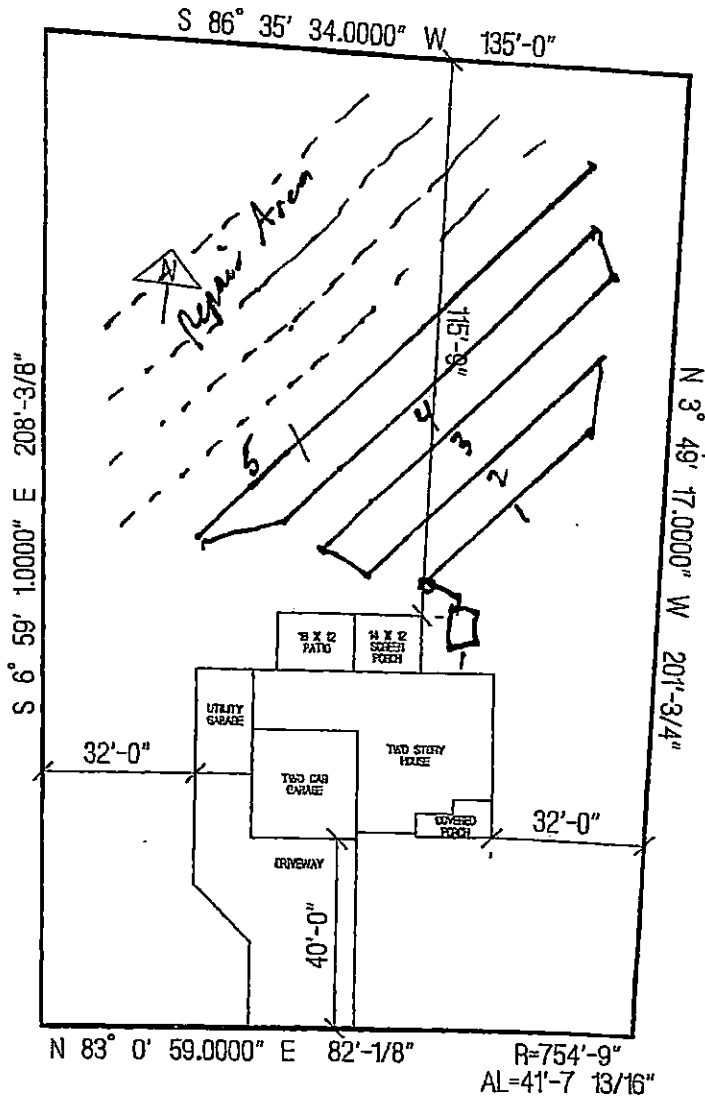
DATE 06/2017

TYPICAL PROFILE (INITIAL)
0-12" LS (VF, w/1)
12-40" SCL (F-/F; s/1)
1" 2" 74"

THERE SHALL BE NO GRADING
 RUTTING CUTTING OR OTHER SOIL
 DISTURBANCE IN SEPTIC AREA
ANY DISTURBANCE MAY CAUSE A SITE
 TO BECOME UNSUITABLE

INSTALL AT 18"

4 Bedroom House



Footprint:
62' x 47'

POINTER DRIVE

CUMBERLAND HOMES, INC.
 THE SHILOH WITH 3RD CAR GARAGE
 LOT # 24 QUAIL GLEN
 SCALE: 1"=40'