

COMMENTS: _____

<u>LANDSCAPE POSITIONS</u>	<u>GROUP</u>	<u>TEXTURES</u>	<u>.1955 LTAR</u>	<u>CONSISTENCE MOIST</u>	<u>WET</u>
R-RIDGE	I	S-SAND	1.2 - 0.8	VFR-VERY FRIABLE FR-FRIABLE FI-FIRM VFI-VERY FIRM EFI-EXTREMELY FIRM	NS-NON-STICKY SS-SLIGHTLY STICKY S-STICKY VS-VERY STICKY NP-NON-PLASTIC SP-SLIGHTLY STICKY P-PLASTIC VP-VERY PLASTIC
S-SHOULDER SLOPE		LS-LOAMY SAND			
L-LINEAR SLOPE	II	SL-SANDY LOAM	0.8 - 0.6		
FS-FOOT SLOPE		L-LOAM			
N-NOSE SLOPE	III	SI-SILT	0.6 - 0.3		
H-HEAD SLOPE		SIL-SILT LOAM			
CC-CONCLAVE SLOPE		CL-CLAY LOAM			
CV-CONVEX SLOPE		SCL-SANDY CLAY LOAM			
T-TERRACE	IV	SIC-SILTY CLAY	0.4 - 0.1		
FP-FLOOD PLAN		C-CLAY SC-SANDY CLAY			

STRUCTURE

- SG-SINGLE GRAIN
- M- MASSIVE
- CR-CRUMB
- GR-GRANULAR
- SBK-SUBANGULAR BLOCKY
- ABK-ANGULAR BLOCKY
- PL-PLATY
- PR-PRISMATIC

MINERALOGY

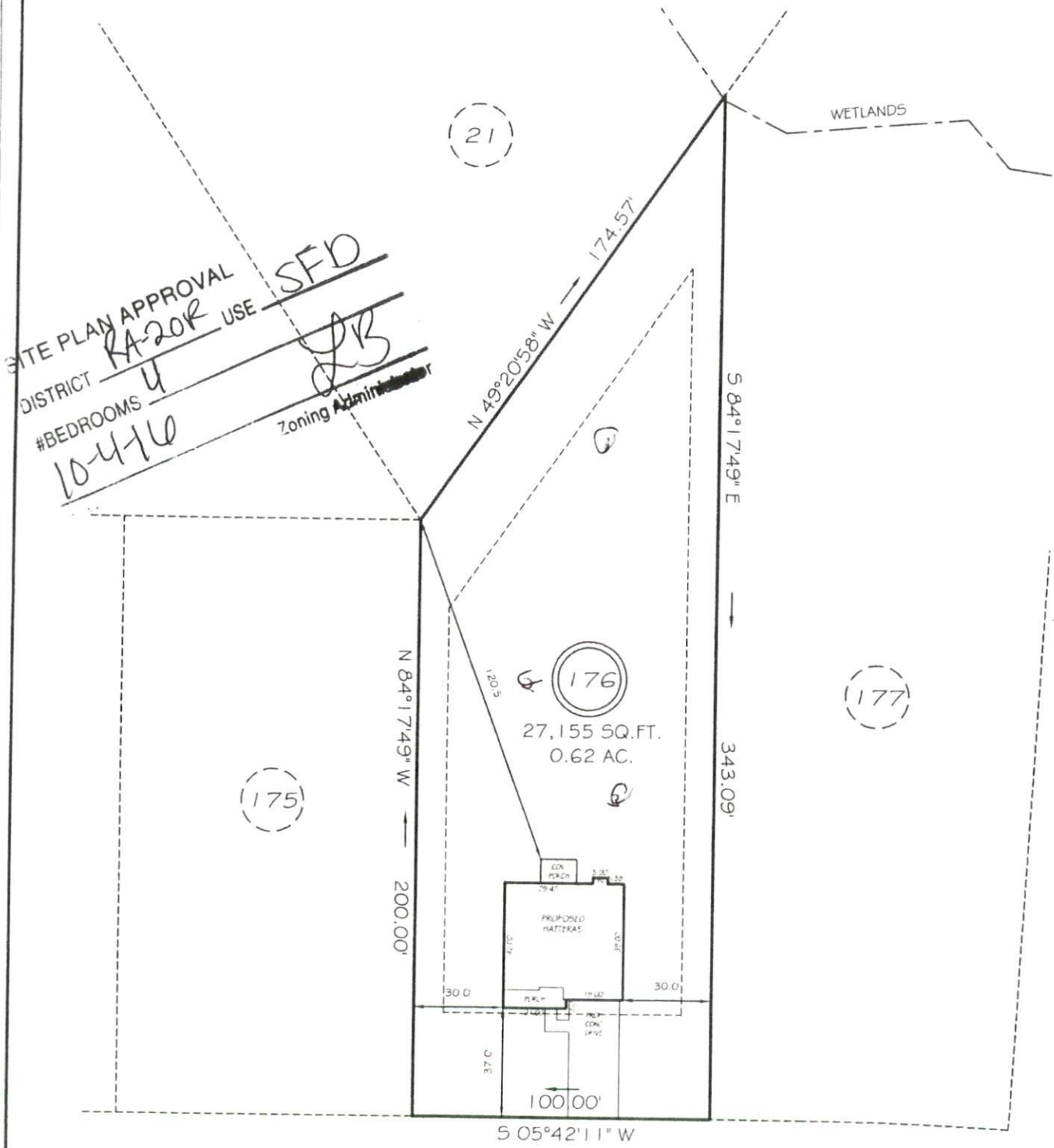
- SLIGHTLY EXPANSIVE
- EXPANSIVE

Show profile locations and other site features (dimensions, references or benchmark, and North)

A large grid for recording profile locations and site features. The grid consists of 20 columns and 20 rows, providing a space for detailed site mapping and data entry.

I, MICHAEL P. GRIFFIN, certify that under my direction and supervision this map was drawn from an actual field survey; that the error of closure of the survey as calculated by coordinates is 1: 10,000+; that the area shown hereon was calculated by coordinates.
 Witness my hand and seal this day of MONTH 2016.

BK 2016 PG 47-48
 HARNETT CO. REGISTRY



SITE PLAN APPROVAL
 DISTRICT RA-20R USE SFD
 #BEDROOMS 4
 10-4-16
 Zoning Administrator

(21)

WETLANDS

(176)
 27,155 SQ.FT.
 0.62 AC.

(177)

(175)

HEATHERWOOD DRIVE
 50' RAW (PUBLIC & UTILITY ACCESS)

SETBACKS

FRONT	35'
REAR	25'
SIDE	10'

LEGEND



SOUTHEASTERN SOIL & ENVIRONMENTAL ASSOC., INC.

PROPOSED SUBSURFACE WASTE DISPOSAL SYSTEM DETAIL SHEET

SUBDIVISION: OAKMONT

LOT 176

INITIAL SYSTEM: APPROVED 25% REDUCTION

REPAIR APPROVED 25% REDUCTION

DISTRIBUTION: SERIAL

DISTRIBUTION SERIAL

BENCHMARK: 100.0

LOCATION PT ON LINE 175/176

NO. BEDROOMS: 4

LTAR 0.4 GPD/FT²

<u>LINE</u>	<u>FLAG COLOR</u>	<u>ELEVATION</u>	<u>LENGTH</u>
1	P	99.34	60'
2	W	98.75	75'
3	P	97.84	105'
4A	W	97.50	60'
			<u>300'</u>
4B	W	97.50	45'
5	P	96.50	105'
6	W	95.25	90'
7	P	93.92	75'
			<u>315'</u>

Initial system

BY M EAKER

DATE 02/2015

TYPICAL PROFILE

THERE SHALL BE NO GRADING,
CUTTING, LOGGING OR OTHER SOIL
DISTURBANCE IN SEPTIC AREA

0-12 LS (VF, ugr)

12-32 SCL (F, s, sh)

PM @ 72" / Cr 2 @ 36" +)

INITIAL AT 15". ADD 3"-5"
COVER WHERE NECESSARY

