

Thomas J. Boyce
P.O. Box 81
Pittsboro, NC 27312
919-868-8135
NC Licensed Soil Scientist # 1241
NC Registered Sanitarian # 1353

Atkins Place, LLC
Keith Bullock and Adam Raynor

Rc:Dexterfield Subdivision, Lots 14, 15, 26, and 27

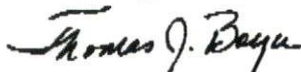
Dear Mr. Bullock and Mr. Raynor,

A final soils evaluation was completed on the above referenced property in January, 2008. The purpose of the evaluation was to determine the ability of the soils to support a subsurface waste disposal system for initial and/or repair for a three bedroom house. All ratings and determinations were made in accordance with "Laws and Rules for Sewage Treatment and Disposal Systems, 15A NCAC 18A .1900".

Typical soils over the lots were 18-24 inches of sandy loam over a sandy clay loam to 46 inches. The soil limiting factor was soil wetness at 46 inches. Loading rates varied from .375-.6 gpd/sqft. Systems were designed for these lots at these loading rates and site plans were drawn. The purpose for the designs was the encroachment of a permanent sediment basin that affected each of these lots. Site plans are to scale showing house placement with system layout and design for each lot.

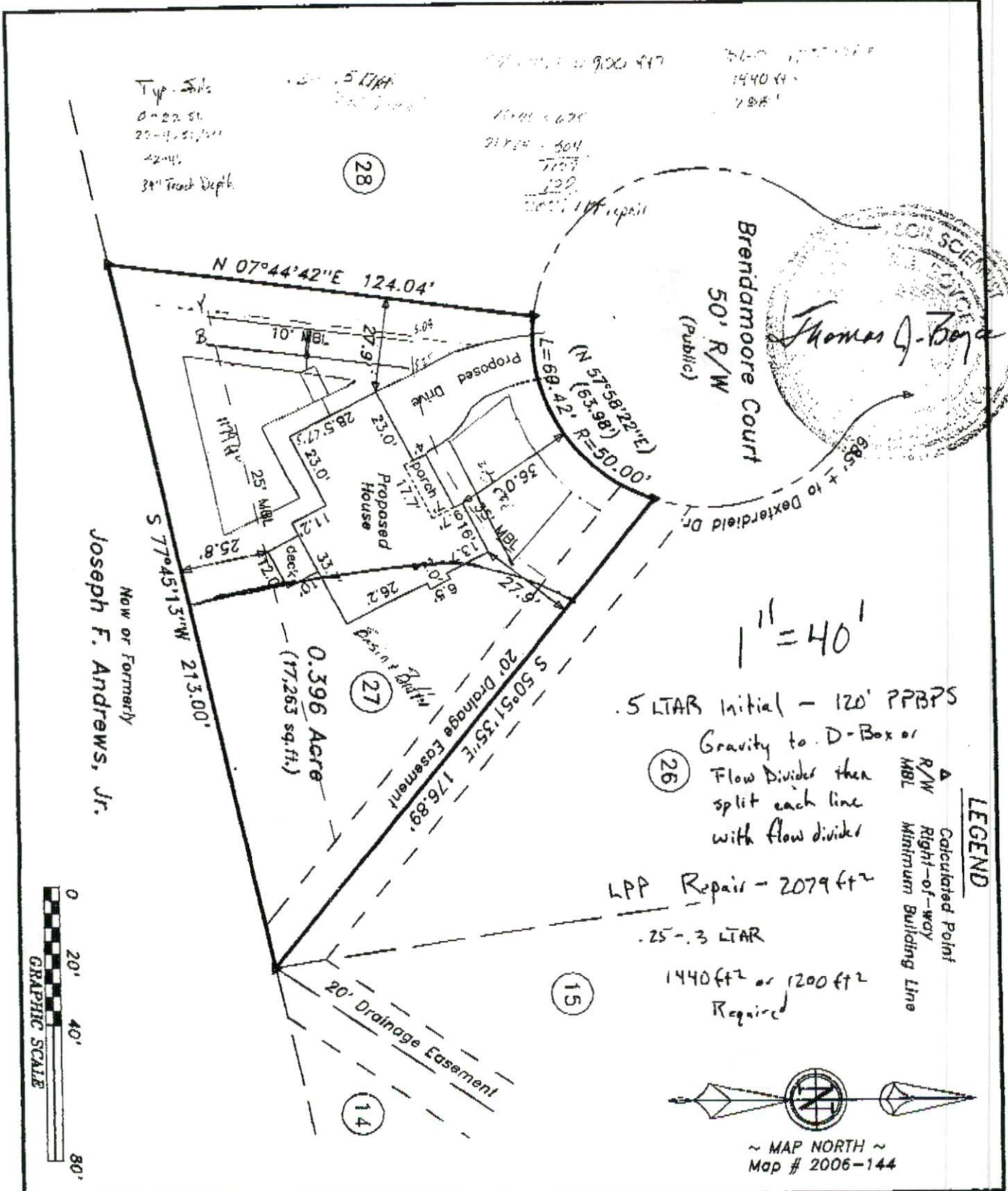
This report does not guarantee or represent approval or issuance of permits as needed by the local health department. This report only represents my opinion as a licensed soil scientist. I trust this is the information that you require at this time. If you have any questions, please call.

Sincerely,



Thomas J. Boyce





Typ. Sills
 0-22.5'
 22-42.5'/ft
 42-44'
 38" Trunk Depth

10.00 x 6.75
 21.75 x 5.04
 11.74
 12.2
 100% LPP repair

56.0
 1440 ft²
 1.8A'



1" = 40'

.5 LTAR Initial - 120' PPBPS

Gravity to D-Box or
 Flow Dividers then
 split each line
 with flow dividers

LPP Repair - 2079 ft²

.25-.3 LTAR

1440 ft² or 1200 ft²
 Required

LEGEND

- ▲ Calculated Point
- △ Right-of-way
- MBL Minimum Building Line



~ MAP NORTH ~
 Map # 2006-144



NO:	<p>This plan ref to a lot of r review and c and inspecif</p>
De)	<p>1418 1417 1425 1421</p>
Ra	<p>LAND 870 NC 910-897-</p>
Sui	<p>~PREL</p>
Hector's Cr	<p>Scale: 1" =</p>