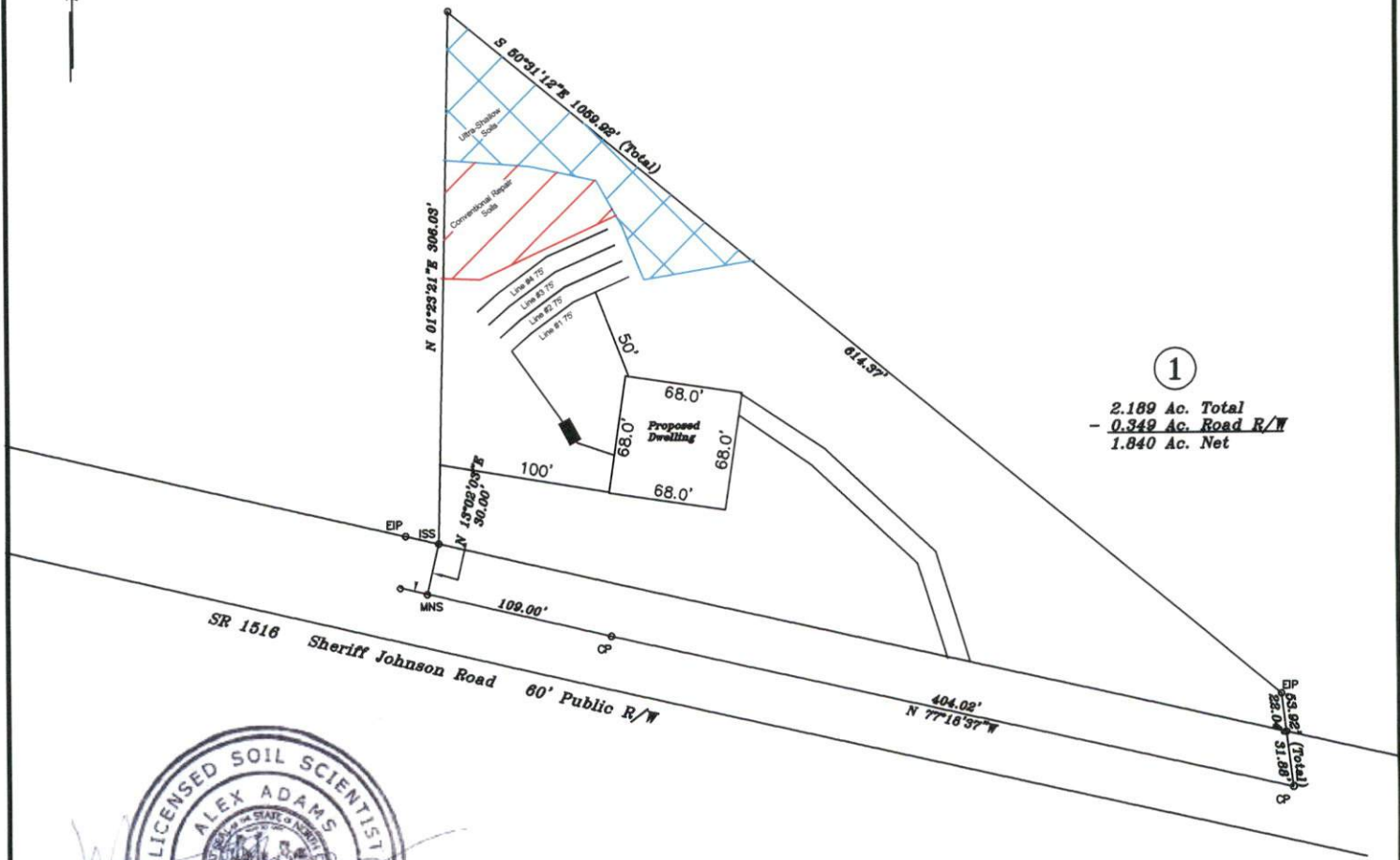
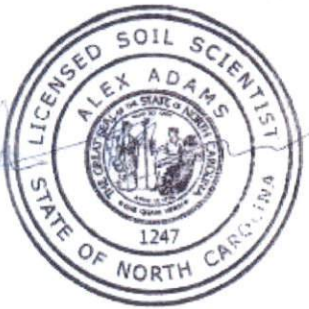


# Preliminary Soils Evaluation Scott Guy - Lot #1 (~2.189 acres) Harnett County, NC



①  
2.189 Ac. Total  
- 0.349 Ac. Road R/W  
1.840 Ac. Net



\*Preliminary Soils Evaluation  
 \*Soil boundary was sketched onto a preliminary map of the property supplied by the client's surveyor.  
 \*Not a Survey.  
 \*Septic system setbacks listed below for new lots.  
 1) 10' from property lines.  
 2) 100' from wells for primary systems.  
 3) 50' from surface waters (streams, ponds, lakes).  
 \*Any mechanical disturbances such as grading, cutting and filling of the suitable soil areas can render areas unsuitable for future septic systems.  
 \*See accompanying report for additional information.  
 \*Due to Soil Variability, Adams soil consulting cannot guarantee that the areas shown as suitable will be permitted by the local Health Department.

\*Not a Survey  
(sketched from a Preliminary Plat)

System: Gravity  
 Lines: 1-4, (300')  
 0.3 LTAR  
 18" Trench Bottom  
 Accepted Status System  
 Repair: Gravity  
 Lines: 1-3, (300')  
 0.3 LTAR  
 12" Trench Bottom  
 Accepted Status System

GRAPHIC SCALE  
1" = 100'



Adams  
Soil Consulting  
919-414-6761  
Project #410

**1516 Sheriffe Johnson Road**

**Scott Guy**

3-Bedroom Home (360 gal./day)

<u>LINE #</u>	<u>COLOR</u>	<u>BS</u>	<u>HI</u>	<u>FS</u>	<u>ELEVATION</u>	<u>LINE LENGTH</u>	<u>Design Length</u>
TBM		2.0		100.0		<u>in field</u>	<u>installation</u>
INST. 1			102.0				
<i>1</i>	<i>Yellow</i>			<i>4.5</i>	<i>97.5</i>	<i>75</i>	<i>75</i>
<i>2</i>	<i>Red</i>			<i>5.7</i>	<i>96.3</i>	<i>75</i>	<i>75</i>
<i>3</i>	<i>Pink</i>			<i>6.9</i>	<i>95.1</i>	<i>75</i>	<i>75</i>
<i>4</i>	<i>Orange</i>			<i>8.5</i>	<i>93.5</i>	<i>75</i>	<i>75</i>

**System**

**Repair**

Lines 5-7

**System Type**

Accepted Status System  
EZ-FLOW

Accepted Status System  
EZ-FLOW

Suggested Soil LTAR

0.30

0.30

**Total Line Length**

300

300

**Square Footage**

900

900

**Proposed Trench Bottom**

18"

12"

**Distribution Method**

Gravity

Ultra-Shallow  
Gravity to D-Box