

COMMENTS: _____

<u>LANDSCAPE POSITIONS</u>	<u>GROUP</u>	<u>TEXTURES</u>	<u>.1955 LTAR</u>	<u>CONSISTENCE MOIST</u>	<u>WET</u>
R-RIDGE	I	S-SAND	1.2 - 0.8	VFR-VERY FRIABLE FR-FRIABLE FI-FIRM VFI-VERY FIRM EFI-EXTREMELY FIRM	NS-NON-STICKY SS-SLIGHTLY STICKY S-STICKY VS-VERY STICKY NP-NON-PLASTIC SP-SLIGHTLY STICKY P-PLASTIC VP-VERY PLASTIC
S-SHOULDER SLOPE		LS-LOAMY SAND			
L-LINEAR SLOPE	II	SL-SANDY LOAM	0.8 - 0.6		
FS-FOOT SLOPE		L-LOAM			
N-NOSE SLOPE	III	SI-SILT	0.6 - 0.3		
H-HEAD SLOPE		SIL-SILT LOAM			
CC-CONCLAVE SLOPE		CL-CLAY LOAM			
CV-CONVEX SLOPE		SCL-SANDY CLAY LOAM			
T-TERRACE	IV	SIC-SILTY CLAY	0.4 - 0.1		
FP-FLOOD PLAN		C-CLAY SC-SANDY CLAY			

STRUCTURE

- SG-SINGLE GRAIN
- M- MASSIVE
- CR-CRUMB
- GR-GRANULAR
- SBK-SUBANGULAR BLOCKY
- ABK-ANGULAR BLOCKY
- PL-PLATY
- PR-PRISMATIC

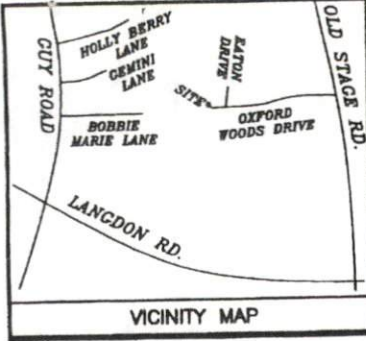
MINERALOGY

- SLIGHTLY EXPANSIVE
- EXPANSIVE

Show profile locations and other site features (dimensions, references or benchmark, and North)

A large grid for site profile locations and features. The grid is approximately 20 columns wide and 25 rows high, providing a space for drawing and recording site data.

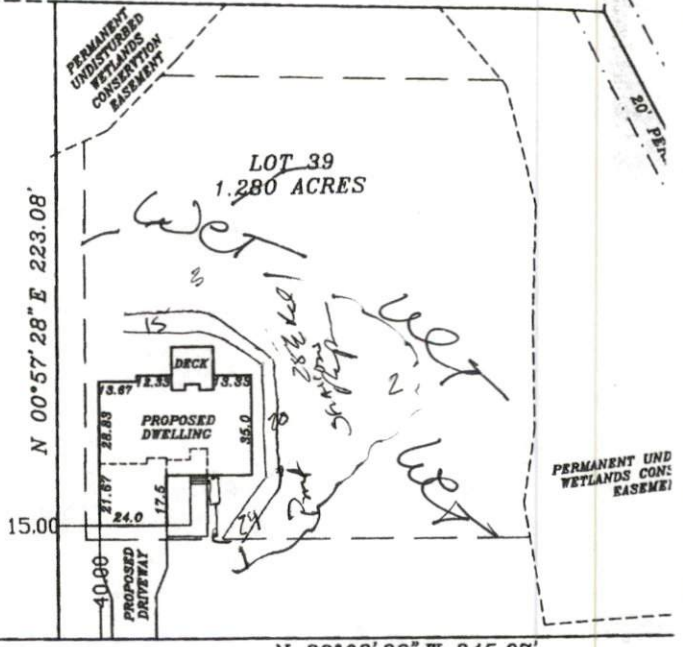
FUTURE DEVELOPMENT OF MAP
NUMBER 2008-214
S 87°48'23" E 195.92'



IMPERVIOUS SURFACE COVERAGE
2220 SQ.FT. - HOUSE & GARAGE
163 SQ.FT. - WALK & STEPS
799 SQ.FT. - DRIVEWAY
3182 TOTAL SQ.FT. - PROPOSED COVERAGE
PERCENTAGE OF LOT COVERED - 5.7%

NOTES:
ALL DRAINAGE EASEMENTS SHALL BE DEDICATED AS PUBLIC AND IT SHALL BE THE RESPONSIBILITY OF THE PROPERTY OWNERS TO MAINTAIN THE DRAINAGE EASEMENTS AND ANY DRAINAGE STRUCTURES THEREIN SO AS TO MAINTAIN THE INTEGRITY OF THIS DRAINAGE SYSTEM AND INSURE POSITIVE DRAINAGE.
A 15' CONSTRUCTION EASEMENT SHALL BE RESERVED ON BOTH SIDES OF ALL PROPOSED STREETS.

LOT 38 OF MAP
NUMBER 2008-214



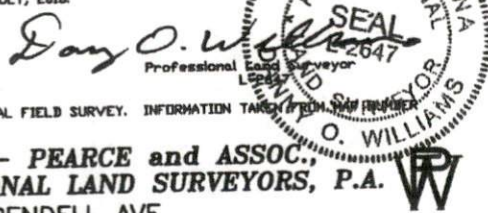
- NOTE: BEING 39 OF OXFORD WOODS SUBDIVISION, RECORDED IN MAP NUMBER 2008-214 & 215.
- NOTE: AREA COMPUTED BY COORDINATE METHOD.
- NOTE: RECORDED MAP HAS BEEN PREVIOUSLY TIED TO GRID.
- NOTE: THIS PROPERTY IS SUBJECT TO EASEMENTS AND RESTRICTIONS OF RECORD.
- PRELIMINARY PLAT- NOT FOR RECORDATION, CONVEYANCES, OR SALES.

Curve	Radius	Length	Chord	Chord Bear.
C1	285.00'	83.15'	63.02'	S 84°36'36" W

I, Darryl D. Williams, certify that this map was drawn under my supervision that the boundaries not surveyed are indicated as drawn from information from Map Number 2008-214 & 215 that the ratio of precision or positional accuracy is 1:100,000 and that this map meets the requirements of the Standards of Practice for Land Surveying in North Carolina (21 NCAC 56.1500).

This 21st day of JULY, 2016.

Seal

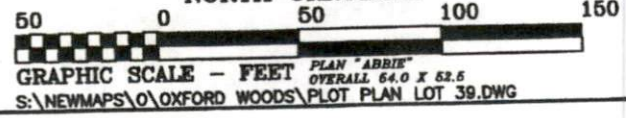


NOTE: NOT AN ACTUAL FIELD SURVEY. INFORMATION TAKEN FROM MAP NUMBER 2008-214 & 215.

WILLIAMS - PEARCE and ASSOC.,
PROFESSIONAL LAND SURVEYORS, P.A.
1000 N. ARENDELL AVE.
P.O. BOX 892, ZEBULON, N.C. 27597
PHONE: 919-269-9605 LIC. # C-0243

OXFORD WOODS DRIVE
50' PUBLIC R/W

PLOT PLAN FOR
COMFORT HOMES
BLACK RIVER TOWNSHIP
HARNETT COUNTY
NORTH CAROLINA



DRAW
CHECK
DATE
SCALE
JOB: