

COMMENTS: _____

LANDSCAPE POSITIONS

R-RIDGE
 S-SHOULDER SLOPE
 L-LINEAR SLOPE
 FS-FOOT SLOPE
 N-NOSE SLOPE
 H-HEAD SLOPE
 CC-CONCLAVE SLOPE
 CV-CONVEX SLOPE
 T-TERRACE
 FP-FLOOD PLAN

GROUP

TEXTURES

.1955 LTAR

CONSISTENCE MOIST

WET

I S-SAND
 LS-LOAMY SAND
 II SL-SANDY LOAM
 L-LOAM
 III SI-SILT
 SIL-SILT LOAM
 CL-CLAY LOAM
 SCL-SANDY CLAY LOAM
 IV SIC-SILTY CLAY
 C-CLAY
 SC-SANDY CLAY

1.2 - 0.8
 0.8 - 0.6
 0.6 - 0.3
 0.4 - 0.1

VFR-VERY FRIABLE
 FR-FRIABLE
 FI-FIRM
 VFI-VERY FIRM
 EFI-EXTREMELY FIRM

NS-NON-STICKY
 SS-SLIGHTY STICKY
 S-STICKY
 VS-VERY STICKY
 NP-NON-PLASTIC
 SP-SLIGHTLY STICKY
 P-PLASTIC
 VP-VERY PLASTIC

STRUCTURE

SG-SINGLE GRAIN
 M- MASSIVE
 CR-CRUMB
 GR-GRANULAR
 SBK-SUBANGULAR BLOCKY
 ABK-ANGULAR BLOCKY
 PL-PLATY
 PR-PRISMATIC

MINERALOGY

SLIGHTLY EXPANSIVE
 EXPANSIVE

Show profile locations and other site features (dimensions, references or benchmark, and North)

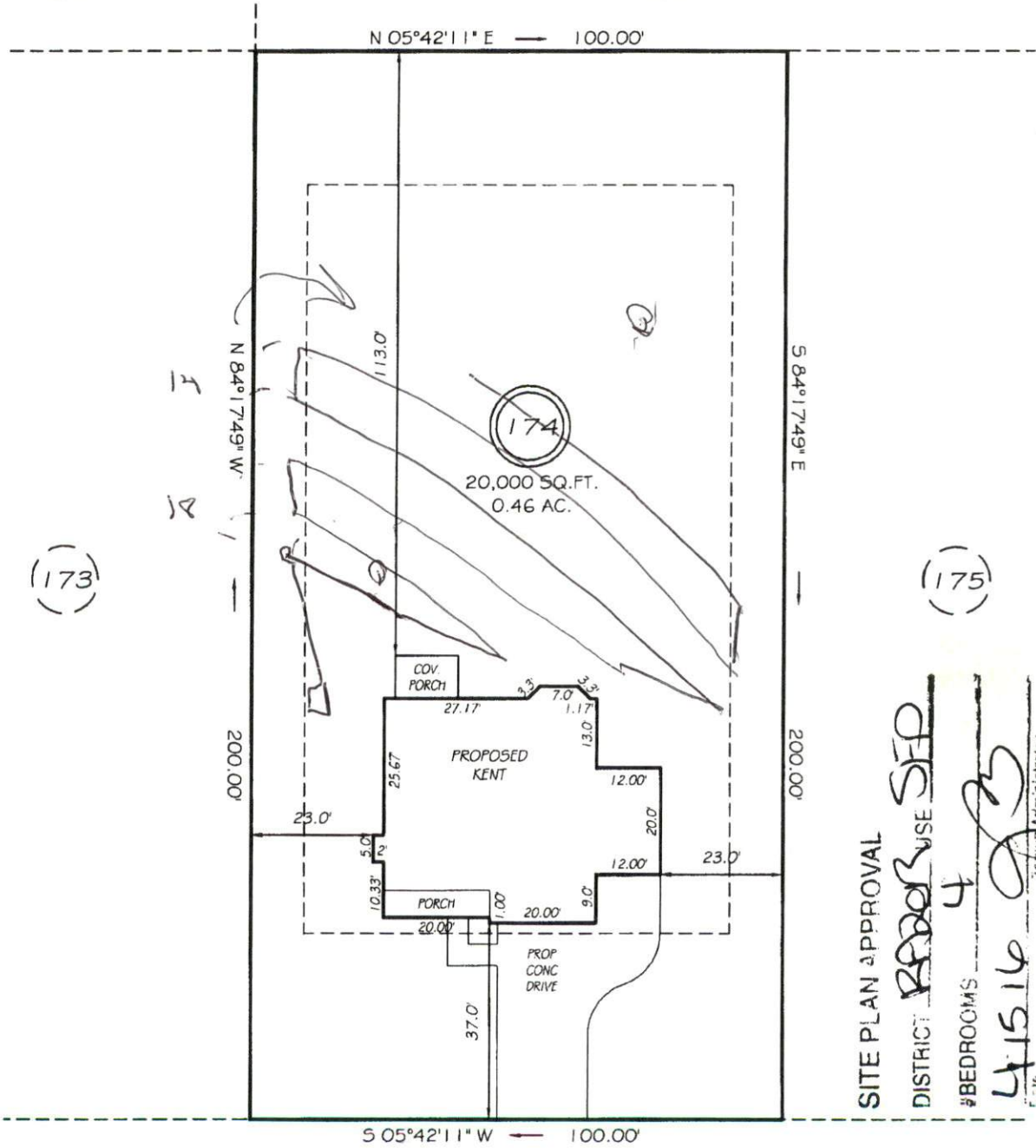
A large grid for recording profile locations and site features. The grid consists of 20 columns and 20 rows, providing a space for detailed notes and measurements.

4. MICHAEL P. GRIFFIN, certify that under my direction and supervision this map was drawn from an actual field survey; that the error of closure of the survey as calculated by coordinates is 1:10,000+; that the area shown hereon was calculated by coordinates.
 Witness my hand and seal this day of MONTH 2016.

BK 2016 PG 47-48
 HARNETT CO. REGISTRY

(23)

(22)



(173)

(175)

SITE PLAN APPROVAL
 DISTRICT REAR USE SFR
 # BEDROOMS 4
 41516
 REGISTRAR

HEATHERWOOD DRIVE
 50' RAW (PUBLIC & UTILITY ACCESS)

SETBACKS

FRONT	35'
REAR	25'
SIDE	10'

LEGEND

