

COMMENTS: _____

<u>LANDSCAPE POSITIONS</u>	<u>GROUP</u>	<u>TEXTURES</u>	<u>.1955 LTAR</u>	<u>CONSISTENCE MOIST</u>	<u>WET</u>
R-RIDGE	I	S-SAND	1.2 - 0.8	VFR-VERY FRIABLE	NS-NON-STICKY
S-SHOULDER SLOPE		LS-LOAMY SAND			
L-LINEAR SLOPE	II	SL-SANDY LOAM	0.8 - 0.6	FR-FRIABLE	SS-SLIGHTLY STICKY
FS-FOOT SLOPE		L-LOAM		FI-FIRM	S-STICKY
N-NOSE SLOPE				VFI-VERY FIRM	VS-VERY STICKY
H-HEAD SLOPE	III	SI-SILT	0.6 - 0.3	EFI-EXTREMELY FIRM	NP-NON-PLASTIC
CC-CONCLAVE SLOPE		SIL-SILT LOAM			SP-SLIGHTLY STICKY
CV-CONVEX SLOPE		CL-CLAY LOAM			P-PLASTIC
T-TERRACE		SCL-SANDY CLAY LOAM			VP-VERY PLASTIC
FP-FLOOD PLAN	IV	SIC-SILTY CLAY	0.4 - 0.1		
		C-CLAY			
		SC-SANDY CLAY			

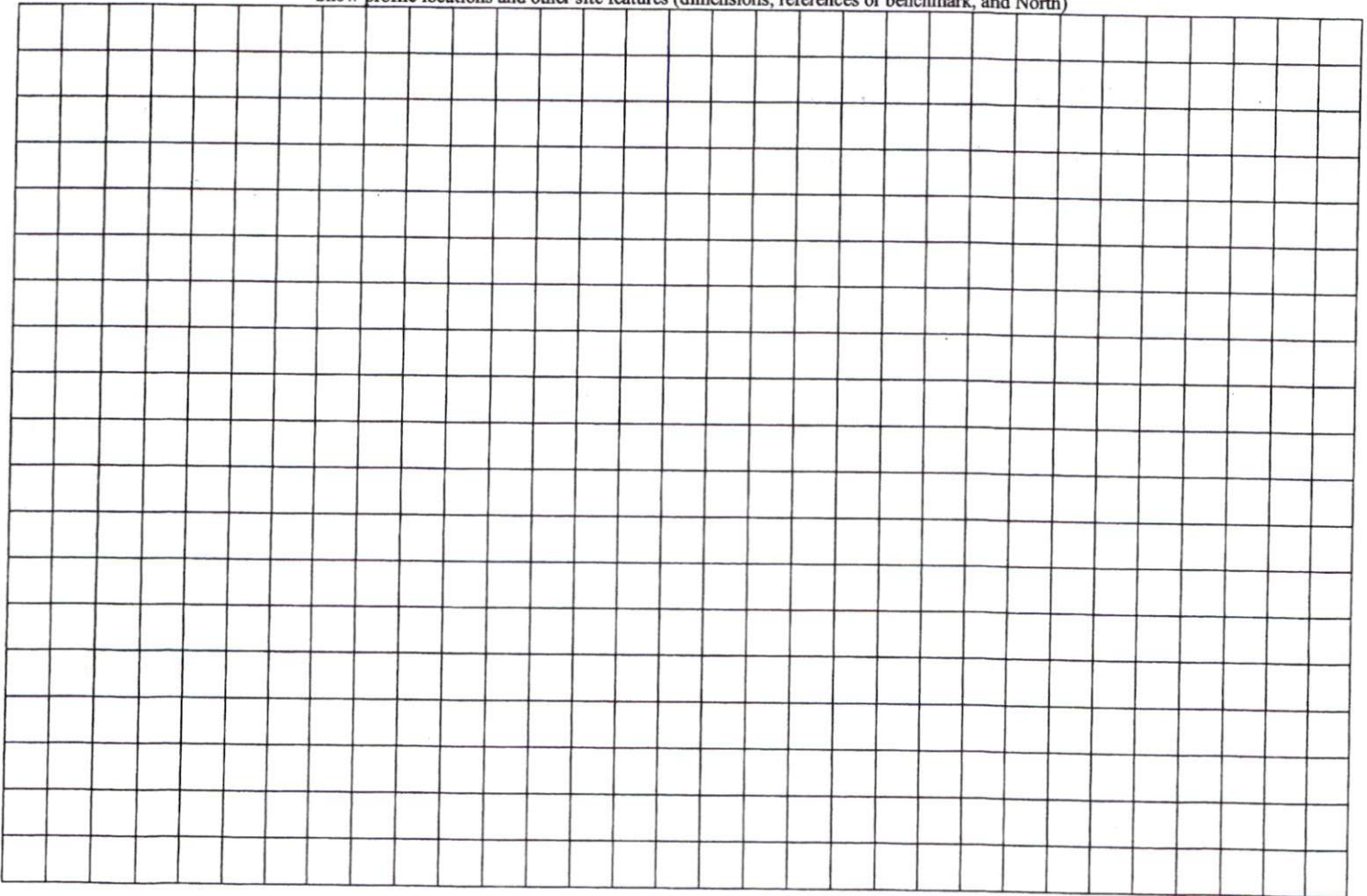
STRUCTURE

- SG-SINGLE GRAIN
- M- MASSIVE
- CR-CRUMB
- GR-GRANULAR
- SBK-SUBANGULAR BLOCKY
- ABK-ANGULAR BLOCKY
- PL-PLATY
- PR-PRISMATIC

MINERALOGY

- SLIGHTLY EXPANSIVE
- EXPANSIVE

Show profile locations and other site features (dimensions, references or benchmark, and North)



I, MICHAEL P. GRIFFIN, certify that under my direction and supervision this map was drawn from an actual field survey; that the error of closure of the survey as calculated by coordinates is 1: 10,000+; that the area shown hereon was calculated by coordinates.
 Witness my hand and seal this day of MONTH 2015.

SITE PLAN APPROVAL

DISTRICT RAPER USE SFD

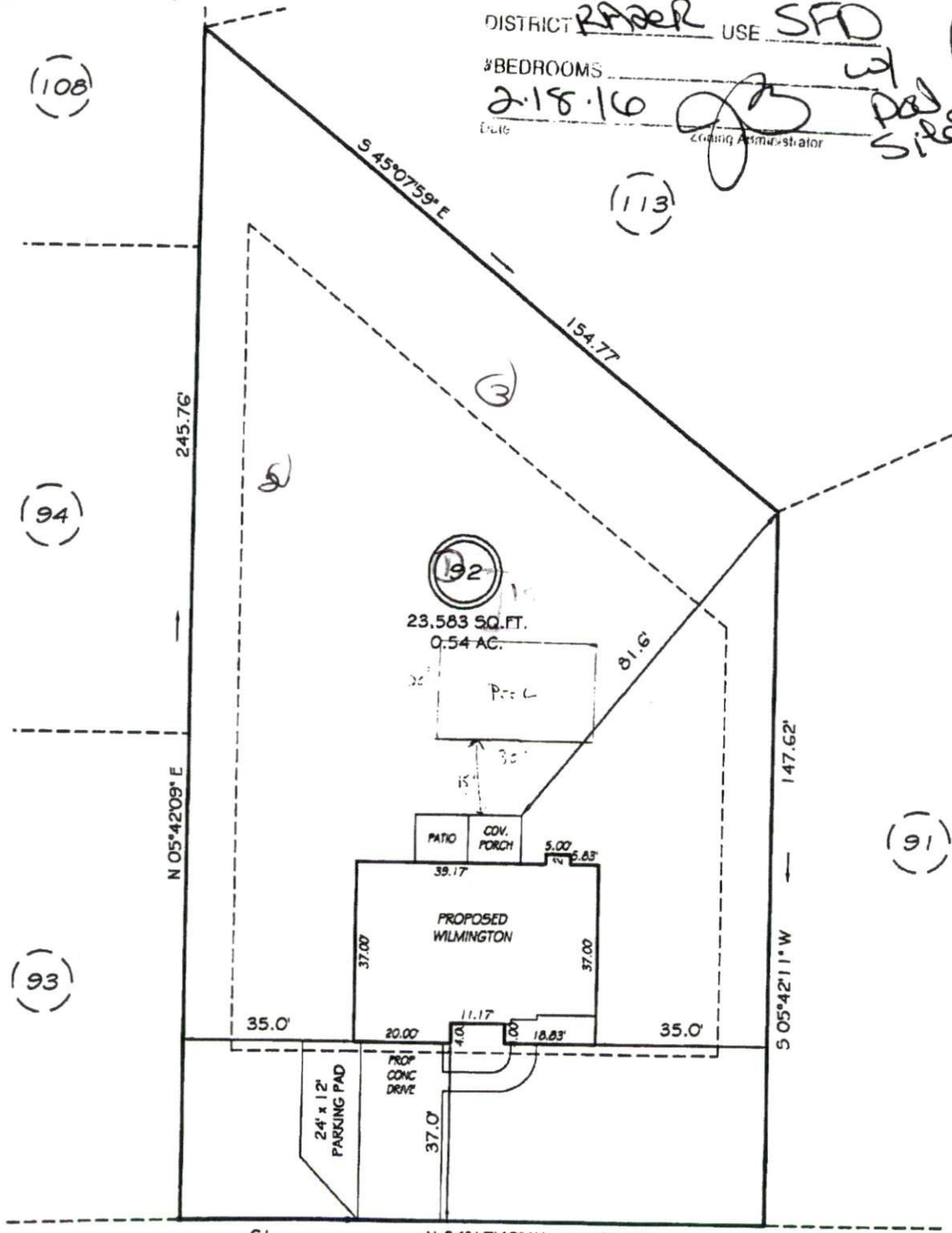
#BEDROOMS

2-18-16

W/ P&S Site

Planning Administrator

BK 2013 PG 346-347
 HARNETT CO. REGISTRY



① 0-27 65
 27-4 BK 52
 15.45

② 0-28 65

③ 0-36 65
 2-8 6 82
 6

3-70 @ 1836"

COUNTRYSIDE DRIVE
 50' RW (PUBLIC & UTILITY ACCESS)

SETBACKS

FRONT	35'
REAR	25'
SIDE	10'

REVISION: NEW PLANS 1/21/16
 CI R=1511.66' L=34.43' N84°56'58"W 34.43'

PRELIMINARY
 NOT FOR RECORDATION,
 SALES OR CONVEYANCE

LEGEND

EIP	EXISTING IRON PIPE	FES	FLARED END SECTION
IPS	IRON PIPE SET	WM	WATER METER
RAW	RIGHT OF WAY	CO	CLEAN OUT
N/F	NOW OR FORMERLY	FH	FIRE HYDRANT
EIS	EXISTING IRON STAKE	CB	CATCH BASIN

