

COMMENTS: _____

<u>LANDSCAPE POSITIONS</u>	<u>GROUP</u>	<u>TEXTURES</u>	<u>.1955 LTAR</u>	<u>CONSISTENCE MOIST</u>	<u>WET</u>
R-RIDGE	I	S-SAND	1.2 - 0.8	VFR-VERY FRIABLE	NS-NON-STICKY
S-SHOULDER SLOPE		LS-LOAMY SAND		FR-FRIABLE	SS-SLIGHTLY STICKY
L-LINEAR SLOPE	II	SL-SANDY LOAM	0.8 - 0.6	FI-FIRM	S-STICKY
FS-FOOT SLOPE		L-LOAM		VFI-VERY FIRM	VS-VERY STICKY
N-NOSE SLOPE				EFI-EXTREMELY FIRM	NP-NON-PLASTIC
H-HEAD SLOPE	III	SI-SILT	0.6 - 0.3		SP-SLIGHTLY STICKY
CC-CONCLAVE SLOPE		SIL-SILT LOAM			P-PLASTIC
CV-CONVEX SLOPE		CL-CLAY LOAM			VP-VERY PLASTIC
T-TERRACE		SCL-SANDY CLAY LOAM			
FP-FLOOD PLAN	IV	SIC-SILTY CLAY	0.4 - 0.1		
		C-CLAY			
		SC-SANDY CLAY			

STRUCTURE

- SG-SINGLE GRAIN
- M-MASSIVE
- CR-CRUMB
- GR-GRANULAR
- SBK-SUBANGULAR BLOCKY
- ABK-ANGULAR BLOCKY
- PL-PLATY
- PR-PRISMATIC

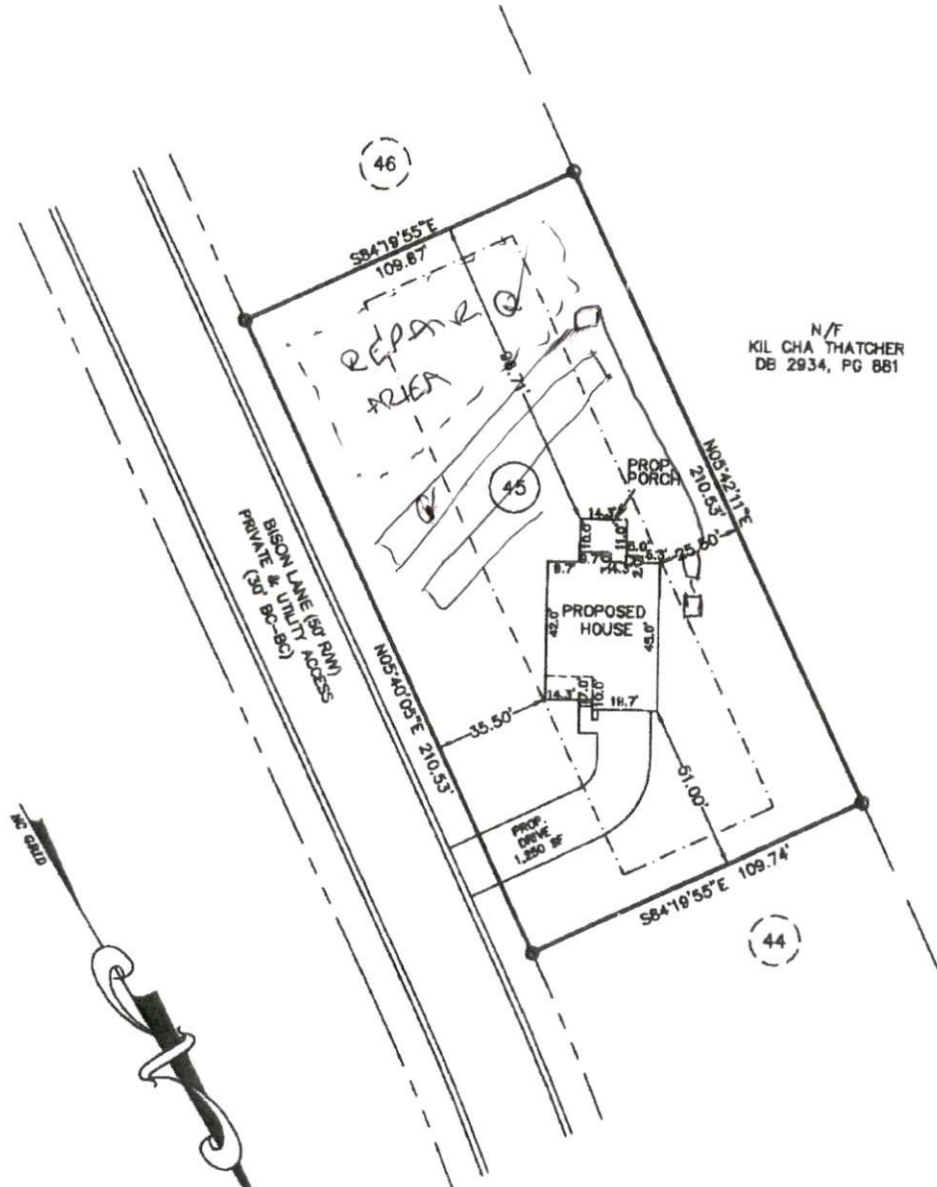
MINERALOGY

- SLIGHTLY EXPANSIVE
- EXPANSIVE

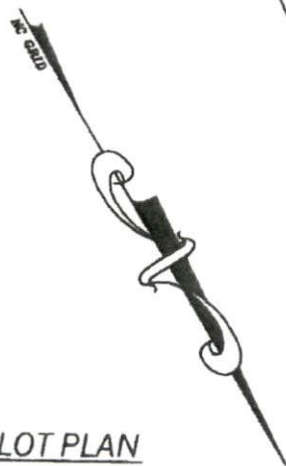
Show profile locations and other site features (dimensions, references or benchmark, and North)

A large grid for site profile locations and features. The grid is approximately 20 columns wide and 25 rows high. It is intended for drawing or marking profile locations, dimensions, references, benchmarks, and North directions.

HOUSE PLAN: FINLEY W/COVERED PORCH - RH



N/F
KIL CHA THATCHER
DB 2934, PG 881



PLOT PLAN

SUBDIVISION: OAKMONT SUBDIVISION
PHASE ONE
SECTION THREE
MB 2013, PG 346

OWNER: MCKEE HOMES, LLC

SCALE: 1" = 40'



The design for the proposed
sewage disposal system
_____ approved.

Sanitarian Supervisor
Harnett County Health Dept.

Date _____

Averette Engineering Co., P.A.
Established 1970
CIVIL ENGINEERING
LAND SURVEYING
PLANNING

Address:
712 E. Lake Ridge Road
Rastford, NC 28376
Phone: (910) 488-5656
Fax: (910) 488-0181
License: C-0146
Web: www.averette-eng.com

Michael D. Averette
Michael D. Averette PE-021411
Professional Engineer
NOVEMBER 18, 2015
Date _____

PPLAN130 J