

COMMENTS: _____

LANDSCAPE POSITIONS

R-RIDGE
 S-SHOULDER SLOPE
 L-LINEAR SLOPE
 FS-FOOT SLOPE
 N-NOSE SLOPE
 H-HEAD SLOPE
 CC-CONCLAVE SLOPE
 CV-CONVEX SLOPE
 T-TERRACE
 FP-FLOOD PLAN

GROUP TEXTURES

I S-SAND
 LS-LOAMY SAND
 II SL-SANDY LOAM
 L-LOAM
 III SI-SILT
 SIL-SILT LOAM
 CL-CLAY LOAM
 SCL-SANDY CLAY LOAM
 IV SIC-SILTY CLAY
 C-CLAY
 SC-SANDY CLAY

.1955 LTAR

1.2 - 0.8

0.8 - 0.6

0.6 - 0.3

0.4 - 0.1

CONSISTENCE MOIST

VFR-VERY FRIABLE
 FR-FRIABLE
 FI-FIRM
 VFI-VERY FIRM
 EFI-EXTREMELY FIRM

WET

NS-NON-STICKY
 SS-SLIGHTY STICKY
 S-STICKY
 VS-VERY STICKY
 NP-NON-PLASTIC
 SP-SLIGHTLY STICKY
 P-PLASTIC
 VP-VERY PLASTIC

STRUCTURE

SG-SINGLE GRAIN
 M-MASSIVE
 CR-CRUMB
 GR-GRANULAR
 SBK-SUBANGULAR BLOCKY
 ABK-ANGULAR BLOCKY
 PL-PLATY
 PR-PRISMATIC

MINERALOGY

SLIGHTLY EXPANSIVE
 EXPANSIVE

Show profile locations and other site features (dimensions, references or benchmark, and North)

HOUSE PLAN: BROOKS - RH

S84°17'49"E

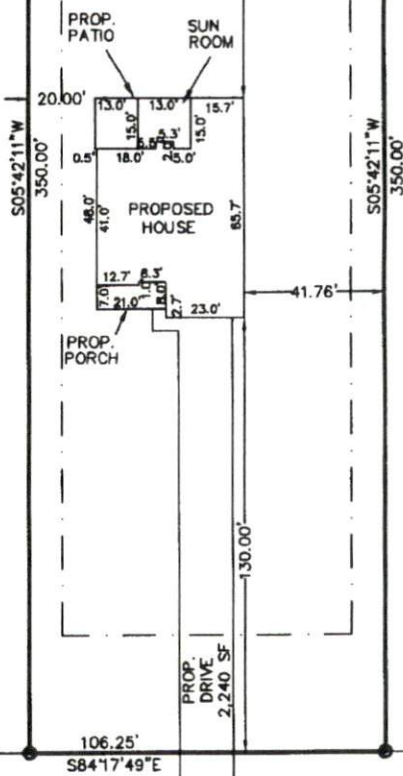
106.25'

N/F
M & JM, LLC
DB 2881, PG 145
FUTURE DEVELOPMENT

(133)

(132)

(131)



BUNTING DRIVE (50' R/W)
PRIVATE & UTILITY ACCESS (30' BC-BC)

PLOT PLAN

SUBDIVISION: OAKMONT SUBDIVISION
PHASE ONE
SECTION THREE
MB 2013, PG 346

OWNER: MCKEE HOMES, LLC

SCALE: 1" = 40'



The design for the proposed
sewage disposal system
_____ approved.

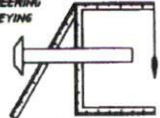
Sanitarian Supervisor
Harnett County Health Dept.

Date

Averette Engineering Co., P.A.

Established 1970

CIVIL ENGINEERING
LAND SURVEYING
PLANNING



Address:
712 E. Lake Ridge Road
Raeeford, NC 28376

Phone: (910) 488-5656
Fax: (910) 488-0181
License: C-0146

Web: www.averette-eng.com

Michael D. Averette
Michael D. Averette PE-021411
Professional Engineer

OCTOBER 5, 2015

Date

PPLAN129 CC