



COMMENTS: \_\_\_\_\_

LANDSCAPE POSITIONS

R-RIDGE  
 S-SHOULDER SLOPE  
 L-LINEAR SLOPE  
 FS-FOOT SLOPE  
 N-NOSE SLOPE  
 H-HEAD SLOPE  
 CC-CONCLAVE SLOPE  
 CV-CONVEX SLOPE  
 T-TERRACE  
 FP-FLOOD PLAN

GROUP	TEXTURES	.1955 LTAR	CONSISTENCE MOIST	WET
I	S-SAND LS-LOAMY SAND	1.2 - 0.8	VFR-VERY FRIABLE FR-FRIABLE	NS-NON-STICKY SS-SLIGHTY STICKY
II	SL-SANDY LOAM L-LOAM	0.8 - 0.6	FI-FIRM VFI-VERY FIRM EFI-EXTREMELY FIRM	S-STICKY VS-VERY STICKY NP-NON-PLASTIC SP-SLIGHTLY STICKY
III	SI-SILT SIL-SILT LOAM CL-CLAY LOAM SCL-SANDY CLAY LOAM	0.6 - 0.3		P-PLASTIC VP-VERY PLASTIC
IV	SIC-SILTY CLAY C-CLAY SC-SANDY CLAY	0.4 - 0.1		

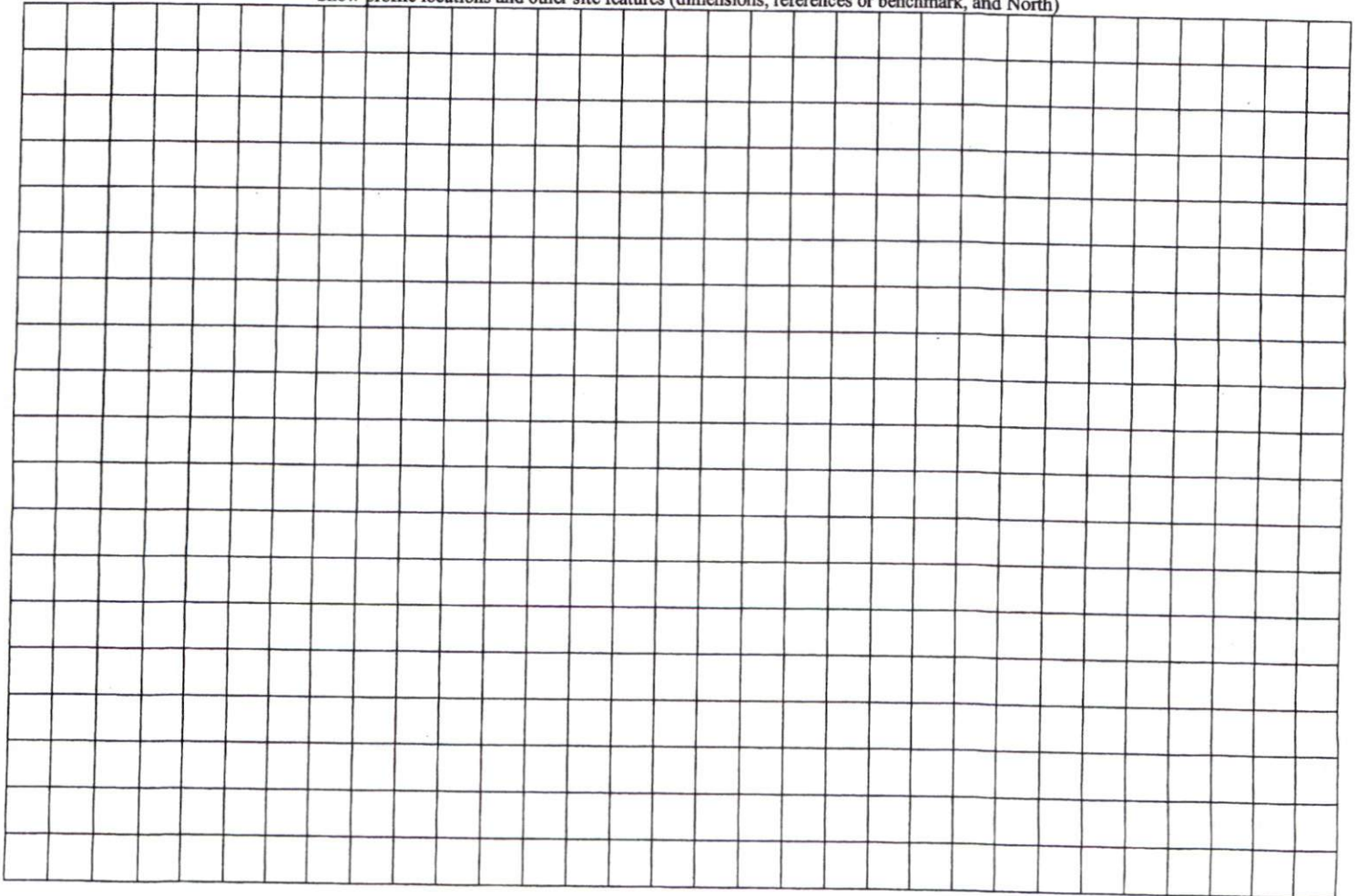
STRUCTURE

SG-SINGLE GRAIN  
 M- MASSIVE  
 CR-CRUMB  
 GR-GRANULAR  
 SBK-SUBANGULAR BLOCKY  
 ABK-ANGULAR BLOCKY  
 PL-PLATY  
 PR-PRISMATIC

MINERALOGY

SLIGHTLY EXPANSIVE  
 EXPANSIVE

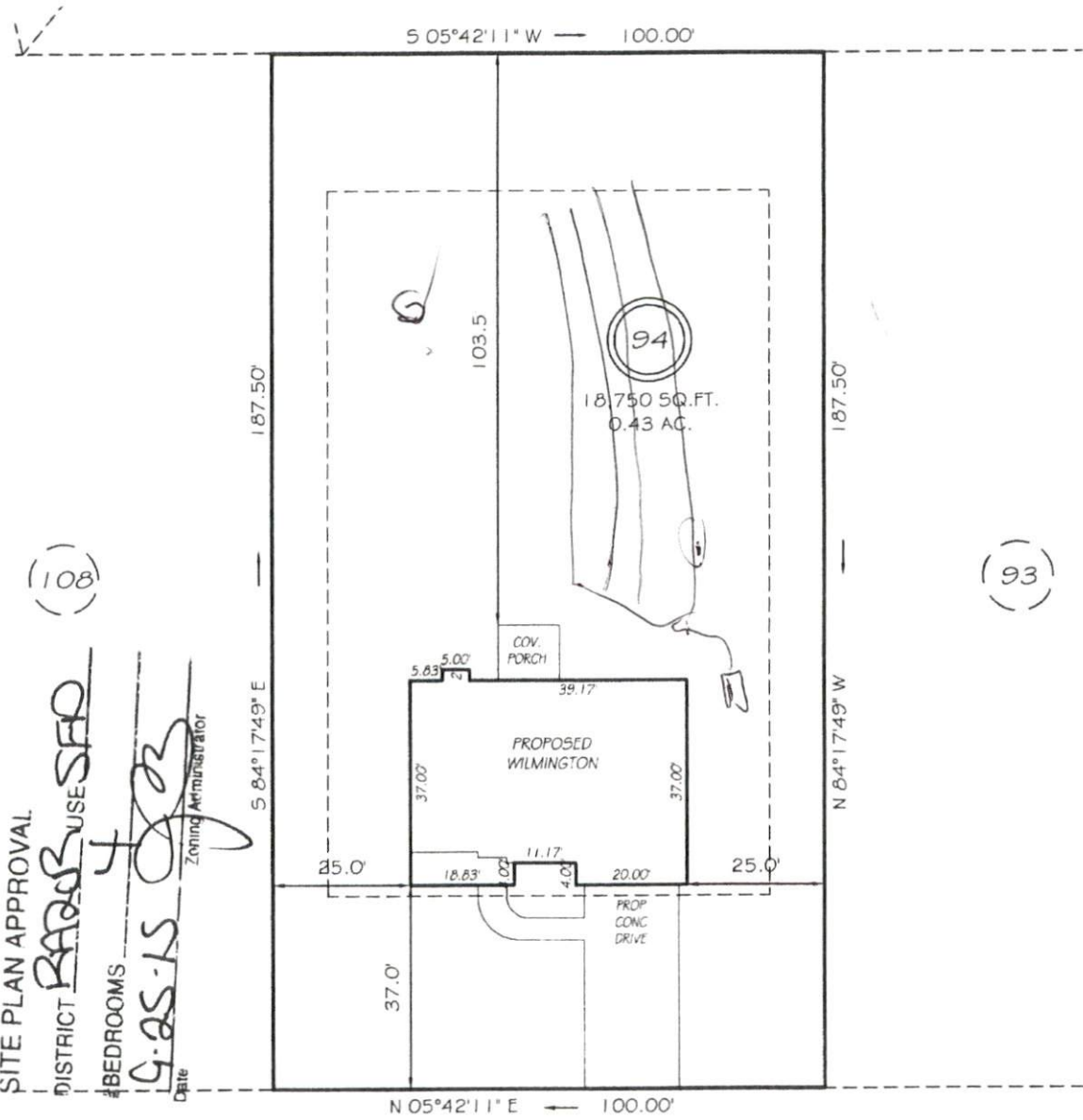
Show profile locations and other site features (dimensions, references or benchmark, and North)



I, MICHAEL P. GRIFFIN, certify that under my direction and supervision this map was drawn from an actual field survey; that the error of closure of the survey as calculated by coordinates is 1:10,000+; that the area shown hereon was calculated by coordinates.  
 Witness my hand and seal this day of MONTH 2015.

BK 2013 PG 346-347  
 HARNETT CO. REGISTRY

(92)



(108)

(93)

SITE PLAN APPROVAL  
 DISTRICT RADDS USE SFD  
 #BEDROOMS 4  
9.25.15  
 Date  
 Zoning Administrator

CHERRY HILL DRIVE  
 50' RW (PUBLIC & UTILITY ACCESS)

SETBACKS  
 FRONT 35'  
 REAR 25'  
 SIDE 10'

**PRELIMINARY**  
 NOT FOR RECORDATION,  
 SALES OR CONVEYANCE

LEGEND

- EIP EXISTING IRON PIPE
- IPS IRON PIPE SET
- RW RIGHT OF WAY
- N/F NOW OR FORMERLY
- EIS EXISTING IRON STAKE
- FES FLARED END SECTION
- WM WATER METER
- CO CLEAN OUT
- FH FIRE HYDRANT
- CB CATCH BASIN

