

COMMENTS: _____

LANDSCAPE POSITIONS

R-RIDGE
 S-SHOULDER SLOPE
 L-LINEAR SLOPE
 FS-FOOT SLOPE
 N-NOSE SLOPE
 H-HEAD SLOPE
 CC-CONCLAVE SLOPE
 CV-CONVEX SLOPE
 T-TERRACE
 FP-FLOOD PLAN

GROUP

TEXTURES

.1955 LTAR

CONSISTENCE MOIST

WET

I S-SAND
 LS-LOAMY SAND
 II SL-SANDY LOAM
 L-LOAM
 III SI-SILT
 SIL-SILT LOAM
 CL-CLAY LOAM
 SCL-SANDY CLAY LOAM
 IV SIC-SILTY CLAY
 C-CLAY
 SC-SANDY CLAY

1.2 - 0.8
 0.8 - 0.6
 0.6 - 0.3
 0.4 - 0.1

VFR-VERY FRIABLE
 FR-FRIABLE
 FI-FIRM
 VFI-VERY FIRM
 EFI-EXTREMELY FIRM

NS-NON-STICKY
 SS-SLIGHTY STICKY
 S-STICKY
 VS-VERY STICKY
 NP-NON-PLASTIC
 SP-SLIGHTLY STICKY
 P-PLASTIC
 VP-VERY PLASTIC

STRUCTURE

SG-SINGLE GRAIN
 M- MASSIVE
 CR-CRUMB
 GR-GRANULAR
 SBK-SUBANGULAR BLOCKY
 ABK-ANGULAR BLOCKY
 PL-PLATY
 PR-PRISMATIC

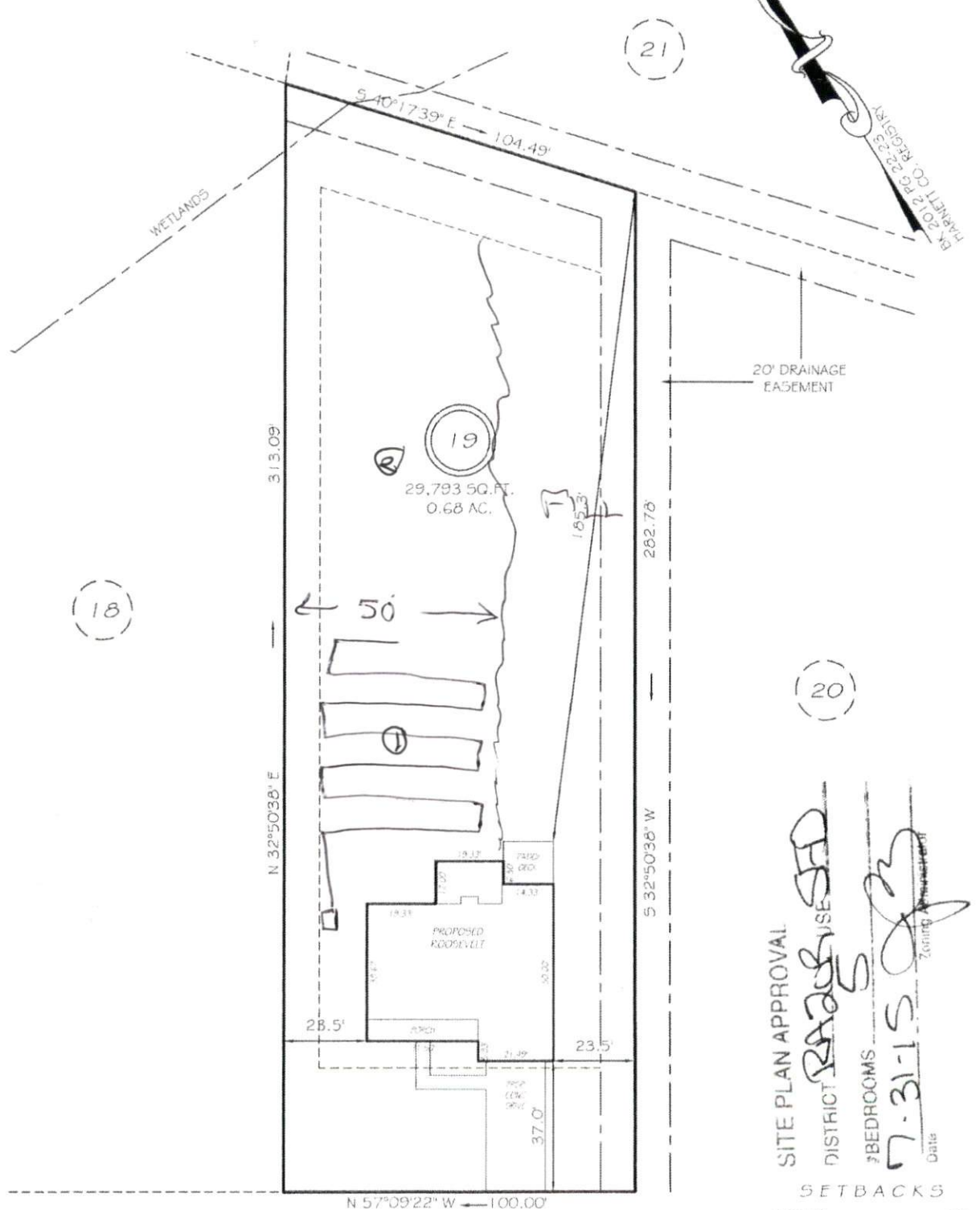
MINERALOGY

SLIGHTLY EXPANSIVE
 EXPANSIVE

Show profile locations and other site features (dimensions, references or benchmark, and North)

A large grid for drawing site features and profile locations. The grid is approximately 20 units wide and 25 units high. It is intended for showing profile locations and other site features, including dimensions, references, benchmarks, and North.

I, MICHAEL P. GRIFFIN, certify that under my direction and supervision this map was drawn from an actual field survey; that the error of closure of the survey as calculated by coordinates is 1: 10,000+; that the area shown hereon was calculated by coordinates.
 Witness my hand and seal this day of MONTH 2013.



(18)

(21)

(20)

SITE PLAN APPROVAL
 DISTRICT **RAAG USE SD**
 #BEDROOMS **7-31-15**
 Date **7-31-15**
 Zoning Administrator

SETBACKS

FRONT	35'
REAR	25'
SIDE	10'

EXECUTIVE DRIVE
 60' RAW (PUBLIC & UTILITY ACCESS)

PRELIMINARY
 NOT FOR RECORDATION,
 SALES OR CONVEYANCE

LEGEND

EIP	EXISTING IRON PIPE	FES	FLARED END SECTION
IPS	IRON PIPE SET	WM	WATER METER
RAW	RIGHT OF WAY	CO	CLEAN OUT
N/F	NOW OR FORMERLY	FH	FIRE HYDRANT
EIS	EXISTING IRON STAKE	CB	CATCH BASIN

