



COMMENTS: \_\_\_\_\_

<u>LANDSCAPE POSITIONS</u>	<u>GROUP</u>	<u>TEXTURES</u>	<u>.1955 LTAR</u>	<u>CONSISTENCE MOIST</u>	<u>WET</u>
R-RIDGE	I	S-SAND	1.2 - 0.8	VFR-VERY FRIABLE FR-FRIABLE FI-FIRM VFI-VERY FIRM EFI-EXTREMELY FIRM	NS-NON-STICKY SS-SLIGHTLY STICKY S-STICKY VS-VERY STICKY NP-NON-PLASTIC SP-SLIGHTLY STICKY P-PLASTIC VP-VERY PLASTIC
S-SHOULDER SLOPE		LS-LOAMY SAND			
L-LINEAR SLOPE	II	SL-SANDY LOAM	0.8 - 0.6		
FS-FOOT SLOPE		L-LOAM			
N-NOSE SLOPE	III	SI-SILT	0.6 - 0.3		
H-HEAD SLOPE		SIL-SILT LOAM			
CC-CONCLAVE SLOPE		CL-CLAY LOAM			
CV-CONVEX SLOPE		SCL-SANDY CLAY LOAM			
T-TERRACE	IV	SIC-SILTY CLAY	0.4 - 0.1		
FP-FLOOD PLAN		C-CLAY SC-SANDY CLAY			

STRUCTURE

- SG-SINGLE GRAIN
- M- MASSIVE
- CR-CRUMB
- GR-GRANULAR
- SBK-SUBANGULAR BLOCKY
- ABK-ANGULAR BLOCKY
- PL-PLATY
- PR-PRISMATIC

MINERALOGY

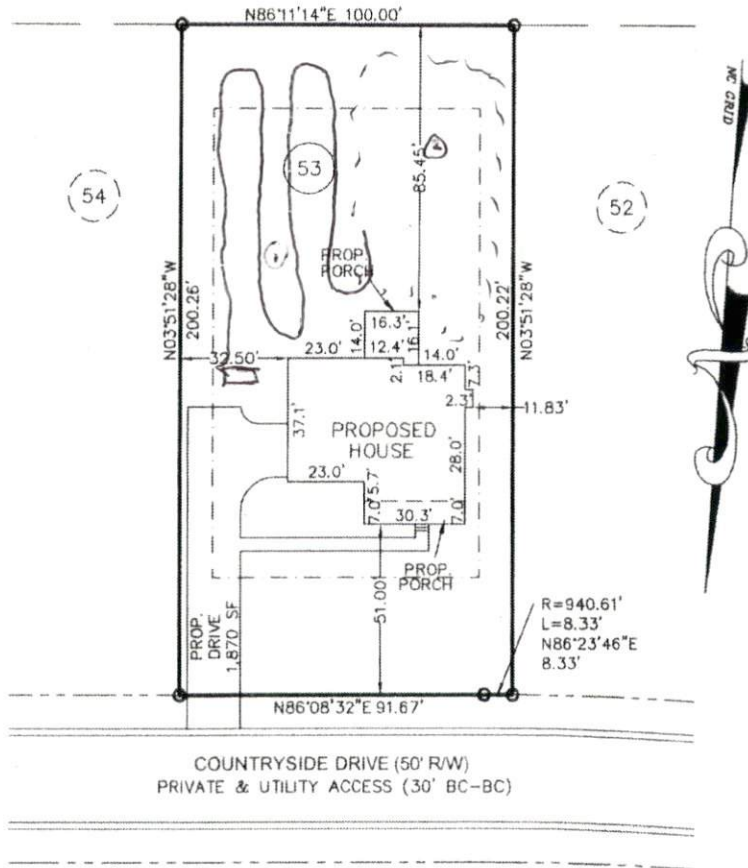
- SLIGHTLY EXPANSIVE
- EXPANSIVE

Show profile locations and other site features (dimensions, references or benchmark, and North)

A large grid for recording profile locations and site features. The grid is approximately 20 columns wide and 25 rows high. It is intended for drawing or marking the locations of profiles and other site features, including dimensions, references, benchmarks, and North directions.

HOUSE PLAN: BEAUFORT WITH GUEST SUITE - LH

N/F  
THERESA STEFFENEY  
DB 2213, PG 769  
ZONING: RA-20R

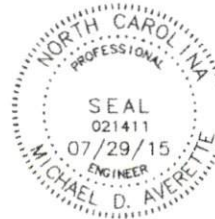


**PLOT PLAN**

**SUBDIVISION:** OAKMONT SUBDIVISION  
PHASE ONE  
SECTION THREE  
MB 2013, PG 346

**OWNER:** MCKEE HOMES, LLC

**SCALE:** 1" = 40'



The design for the proposed  
sewage disposal system  
\_\_\_\_\_ approved.

Sanitarian Supervisor  
Harnett County Health Dept.

Date

**Averette Engineering Co., P.A.**  
Established 1970  
CIVIL ENGINEERING  
LAND SURVEYING  
PLANNING

Address: 712 E. Lake Ridge Road  
Raleigh, NC 27616  
Phone: (910) 488-5656  
Fax: (910) 488-0181  
License: C-0146  
Web: www.averette-eng.com

*Michael D. Averette*  
Michael D. Averette PE-021411  
Professional Engineer  
JULY 29, 2015  
Date

PPLAN12910